



Phila. Fruit

PHILADELPHIA Terminal
Prices as of 13-JUL-2000
Report Supplied By USDA

CITRUS FRUITS —
CLEMENTINES: OFFERINGS INSUFFICIENT TO QUOTE - GRAPEFRUIT: MARKET STEADY 4/5 buctns FL U.S. One Indian River Red 23s 11.00 27s 11.00 32s 11.00 36s 11.00 40s 11.00 -LEMONS: MARKET STEADY ctns CA Shprs 1st Grade 140s 26.50 165s 27.50 Shprs Choice 95s 17.00-18.00 mostly 17.50-18.00 115s 17.00-18.00 140s 17.00-18.00 165s 18.50-19.50 15 kg cntrs SP 120s 15.00 140s 15.00 160s 15.00 -LIMES: MARKET STEADY 10 lb ctns FL 48s 4.50 MX 42s 5.00 48s 5.00 54s 5.00 40 lb ctns MX 150s 11.00-12.50 175s 12.00 -MISC CITRUS: NO SALES REPORTED -ORANGES: MARKET ABOUT STEADY ctns CA Shprs 1st Grade Valencia 56s 15.00 72s 14.00 88s 14.00 Shprs Choice Valencia 56s 10.00 72s 10.00 88s 10.00-11.00 113s 10.00-11.00 4/5 buctns FL Valencia 64s 10.00-11.00 100s 12.00 -TANGELOS: OFFERINGS NONE -TANGERINES: OFFERINGS INSUFFICIENT TO QUOTE -TEMPLES: OFFERINGS NONE
BERRIES -BLUEBERRIES: MARKET HIGHER flts 12 1-pt cups with lids NJ lge 12.00-15.00 mostly 13.00 med-lge 11.00-14.00 --- CRANBERRIES: OFFERINGS NONE -MISC BERRIES: OFFERINGS LIGHT flts 12 5.6-oz cups with lids OR Blackberries 30.00 -RASPBERRIES: OFFERINGS LIGHT flts 12 6-oz cups with lids CA Red 20.00 ord cond 7.00-8.00 CD Red 30.00 OR Red 21.00 one label 30.00 -STRAWBERRIES: MARKET HIGHER flts 12 1-pt bkts CA med-lge 14.00 fr cond 12.00
MELONS -CANTALOUPS: MARKET HIGHER 1/2 ctns/crts CA 9s 7.00-9.00 some 11.00 12s 10.00-12.00

mostly 10.00 15s 10.00-12.00 mostly 11.00 fr cond 7.00-8.00 -HONEYDEWS: MARKET HIGHER 1/2 ctns AZ 6s fr cond 6.00 CA 5s 9.00-10.50 6s 9.00-10.50 -MISC MELONS: NO SALES REPORTED -WATERMELONS: MARKET ABOUT STEADY ctns per ctn GA Sangria 3s 15.00 4s 15.00 Red Seedless 4s 20.00 SC Sangria 3s 15.00 4s 15.00 Red Seedless 4s 20.00 bins GA Sangria per bin 50-55 count ord cond 25.00-30.00 Red Seedless per bin 45-60 count 225.00 NC Red Seedless PER 24" BIN 40 COUNT 130.00 45 COUNT 130.00-140.00 SC Red Seedless per bin 45-60 count 225.00 per melon GA Sangria 18-20 lb 3.00-3.25 22-24 lb 3.50 30-32 lb 4.75-5.00 SC Sangria 18-20 lb 3.00-3.25 22-24 lb 3.50 30-32 lb 4.75-5.00
NON-CITRUS FRUITS -APPLES: MARKET ABOUT STEADY REGULAR STORAGE ctns trypk CL BOAT Fuji 90s 20.00 CONTROLLED ATMOSPHERE STORAGE ctns trypk NY U.S. ExFcy Red Rome 64s 16.00 WA WAExFcy Red Delicious 64s 15.00 72s 15.00 80s 13.00-15.00 88s 13.00-16.00 mostly 13.00-15.00 100s 15.00-16.00 113s 13.00-15.00 mostly 15.00 U.S. ExFcy Golden Delicious 72s 17.00-18.00 80s 17.00-18.00 88s 17.00-18.00 - APRICOTS: 24 lb ctns lse CA U.S. One Patterson 8 13.00-16.00 10 11.00-13.00 12 10.00 -AVOCADOS: MARKET FL LOWER, CA HIGHER. ctns 2 lyr CA Hass 48s 40.00-42.00 ctns 1 lyr FL U.S. Comb Various Greenskin Varieties 7s 11.00 8s 11.00 9s 11.00 10s 11.00 few 13.00 12s 10.00-11.00 mostly 10.00 - BANANAS: MARKET STEADY 40 lb ctns IMPORT 10.00 fair qual 9.00-9.50 sml 7.50 petite 13.00 40 lb ctns bagged IMPORT 10.50 -CHERRIES: MARKET LOWER 18 lb ctns UT U.S. One Rainier 12 row sz & lgr 20.00-25.00 20 lb ctns UT U.S. One Bing 11 row sz & lgr 20.00-22.00 WA WAOne Bing 9 1/2 row sz 40.00 10 1/2 row sz & lgr 28.00-32.00 11 row sz & lgr 26.00-28.00 12 row sz & lgr 20.00-

24.00 8 2.2 LB FLMB SUPER SZ 26.00-30.00 Lambert 10 1/2 row sz & lgr 30.00-32.00 11 row sz & lgr 26.00-28.00 11 1/2 row sz & lgr 26.00 12 1.1 LB FLMB RAINIER 11 1/2 ROW SZ 25.00-30.00 - FRUITS OTHER: ctns 1 lyr FL Carambola - Star Fruit 25s 32.00-33.00 30s few 30.00 -GRAPES: MARKET ABOUT STEADY 19 lb lugs bgd CA Perlette 17.00-18.00 mostly 17.00 Flame Seedless med-lge 17.00-18.00 mostly 18.00 med 15.00 18 lb lugs bgd AZ Perlette med 10.00-11.00 mostly 10.00 ord cond 4.00-7.00 mos 5.00-6.00 Flame Seedless med 12.00-13.00 CA Thompson Seedless lge 18.00 Flame Seedless med-lge 16.00 MX White Seedless Type med 10.00-12.00 18 lb lugs wrpd CA Flame Seedless lge 22.00 -KIWIFRUIT: MARKET STEADY flts 1 lyr NZ 56s 36 SZ 11.00 ctns 22 lb lse NZ 36 sz 20.00 - MANGOES: MARKET SLIGHTLY HIGHER ctns 1 lyr MX Kent 9s fr cond 3.50-4.50 10s fr cond 3.00-4.00 Tommy Atkins 7s fr cond 3.50-4.50 8s fr cond 3.50-4.50 9s fr cond 3.50-4.50 10s 3.50-4.50 fr cond 3.00 12s 3.50-4.50 - NECTARINES: MARKET STEADY ctns 2 lyr trypk CA California Well Matured Various White Flesh Varieties 48s 21.00 Ruby Diamond 48s 16.00 25 lb ctns lse CA California Well Matured Various Yellow Flesh Varieties 64 sz 9.00 Red Diamond 56 sz 13.00-16.00 some 10.00 64 sz 10.00-13.00 72 sz 10.00 Summer Beaut 56 sz 14.50 few 15.00 64 sz 12.50 occ 13.00 Summer Brite 64 sz 10.00-11.00 Various White Flesh Varieties 56 sz 15.00-16.00 64 sz 12.00-13.00 mostly

12.00 72 sz 9.00-10.00 Ruby Diamond 56 sz 13.00-14.00 mostly 13.00 60 sz 13.00 64 sz 10.00 -PAPAYA: MARKET ABOUT STEADY 10 lb ctns BZ Red Flesh 12s 9.00-10.00 HI Red Flesh 8s few 13.00 9s few 13.00 10s 13.00 -PEACHES: MARKET ABOUT STEADY ctns 1 lyr trypk CA California Well Matured White Lady 24s 13.50 25s 12.00 Saturn (Flat Type) 28s 13.50 ctns 2 lyr trypk CA California Well Matured Elegant Lady 36s 15.00-17.00 Flavorcrest 36s fr cond 10.00 Rich Lady 42s 14.00-15.00 fr cond 10.00 White Lady 56s 12.00-14.00 Various White Flesh Varieties 56s 16.00 fr cond 10.00 1/2 buctns GA U.S. ExOne Redglobe 2 1/2 up 13.00 NJ No Grade Marks Various Yellow Flesh Varieties 2 1/2 up 12.00 SC U.S. ExOne Redglobe 2 1/2 up 13.00-14.00 2 1/2 up 12.00 Redtop 2 1/2 up 13.00-14.00 2 1/2 up 12.00 25 lb ctns CA California Well Matured Various Yellow Flesh Varieties 56 sz 10.00-11.00 Elegant Lady 48-50 sz 15.00 Flavorcrest 56 sz 10.00-11.00 White Lady 64 sz 12.00-13.00 mostly 12.00 -PEARS: 40 lb ctns/boxes AG D'Anjou 70s fr cond 7.00-8.00 80s fr cond 7.00-8.00 100s fr cond 6.00-7.00 110s fr cond 6.00-7.00 Packham Triumph 70s fr cond 7.00-8.00 80s fr cond 7.00-8.00 100s fr cond 6.00-7.00 110s fr cond 6.00-7.00 -PERSIMMONS:

OFFERINGS INSUFFICIENT TO QUOTE -PINEAPPLES: ctns 1 lyr CR golden ripe 6s 21.00 ctns 2 lyr CR 8s 14.00 10s 14.00 -PLANTAINS: MARKET STEADY 40 lb ctns CB Yellow 13.00 few 12.00 EC Green 12.50 - PLUMS: MARKET STEADY 28 lb ctns lse CA California Well Matured Black Amber 35 sz 20.00 45 sz 17.00-18.00 55 sz 15.00-16.00 El Dorado 45 sz 28.00 50 sz 19.00 Queen Rosa 40 sz 23.00 Catalina 35 sz 25.00 -POMEGRANATES: OFFERINGS NONE -PRUNES: OFFERINGS NONE.

New Jersey Fruit

BRIDGETON Shipping Point
Prices as of 12-JUL-2000
Report Supplied By USDA

BERRIES 2000 Season - BLUEBERRIES: DEMAND EXCEEDS SUPPLY MARKET STEADY flts 12 1-pt cups with lids Bluecrop lge 12.00 Most shippers filling prior commitments at 11.00.

FOR SALE - MANURE
20-25 ton trailer loads
\$10/per ton within 10 mile radius
VINTAGE SALES STABLES, INC.
Paradise, PA 17562
(717) 442-4181
L. Robert Frame, President

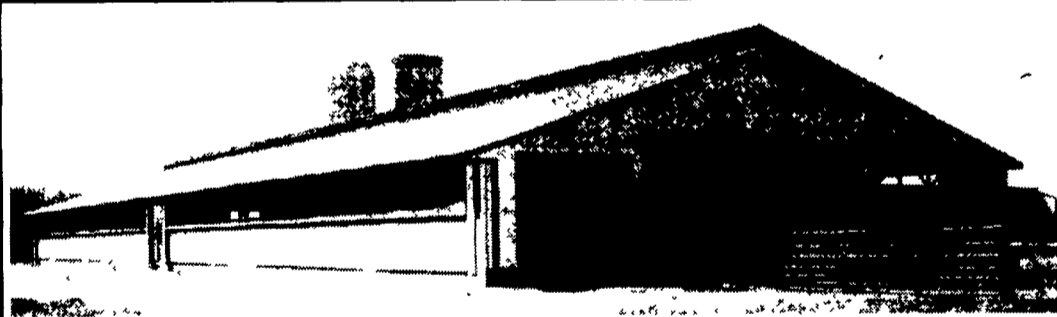
LEBANON PRODUCE AUCTION
Reistville, PA
SALE
Tuesday * Thursday * Friday * 10 AM
Produce
Hay and Straw
Flowers
Bedding Plants
717-949-2643

CONESTOGA VALLEY ENTERPRISES
HI-MAG Agricultural Lime Spreading HI-CAL
Cash Discount Savings on Delivery
Call Toll Free day and evening
1-800-724-3277
Serving PA, MD, Delmarva, NJ, NY & (LI)

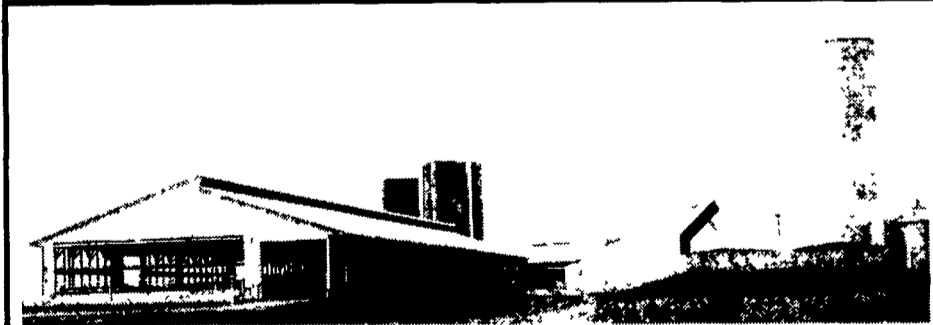


477 East Farmersville Rd.
New Holland, PA 17557

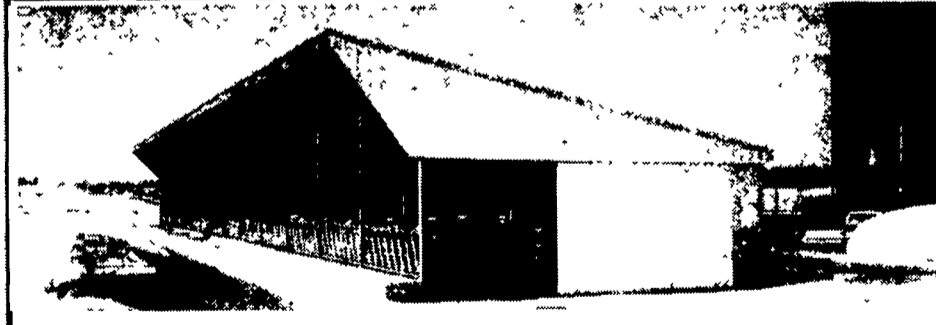
(717) 355-2361



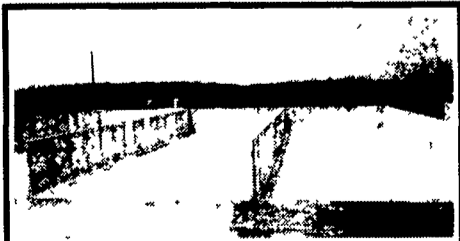
Concrete Slatted Free Stall Barn



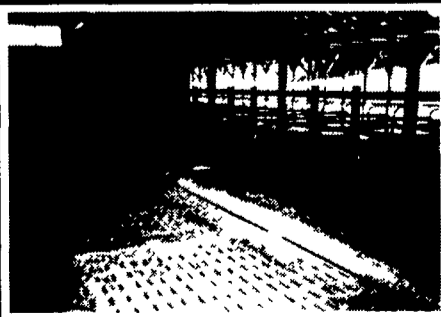
Slatted Beef Barn



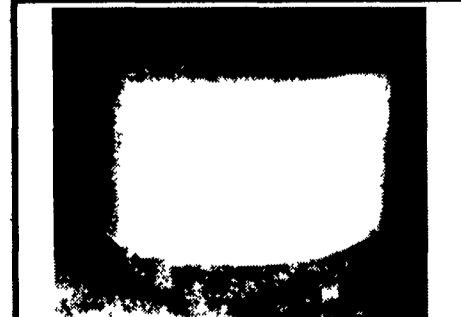
Slatted Heifer Barn



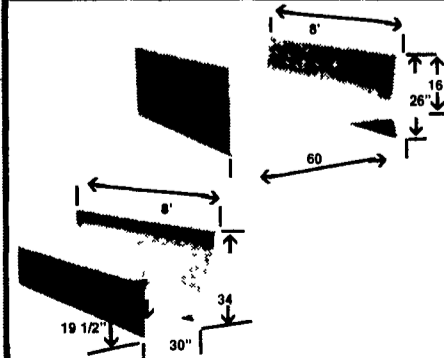
Precast T-Wall Concrete Bunker Silos or commodity buildings built to suit your needs.
Bunkers available in 8 Ft. or 12 Ft. High.



Slatted Free Stall Barn



Round Concrete Watering Troughs, SCS Approved



Concrete Feed Bunks