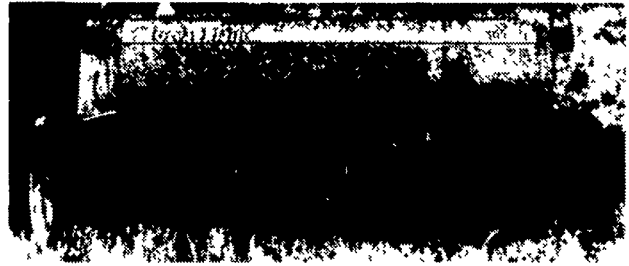


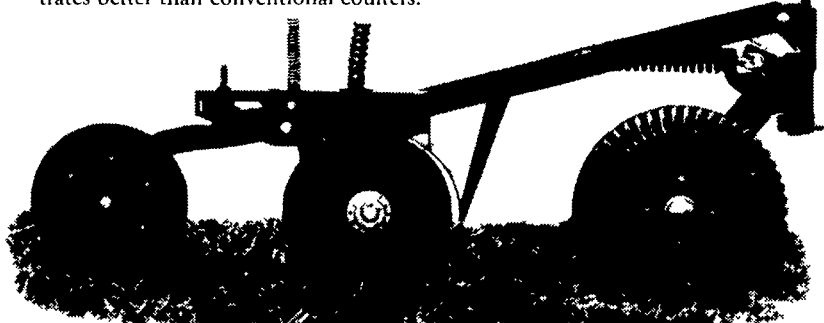
Great Plains

HOW MUCH YOU REAP DEPENDS ON HOW WELL YOU SOW



GREAT PLAINS 1005 NO-TILL DRILL
We Have 10' Units in Stock and Ready for Immediate Delivery.

Great Plains "Turbo" Coulters are a must in no-till conditions. They cut through the heaviest residue, clearing a path for the opener. The turbo coulters also puts "Tilth" into cold compacted soil helping to warm it and giving roots plenty of room to grow. Great Plains Exclusive turbo coulters penetrate better than conventional coulters.



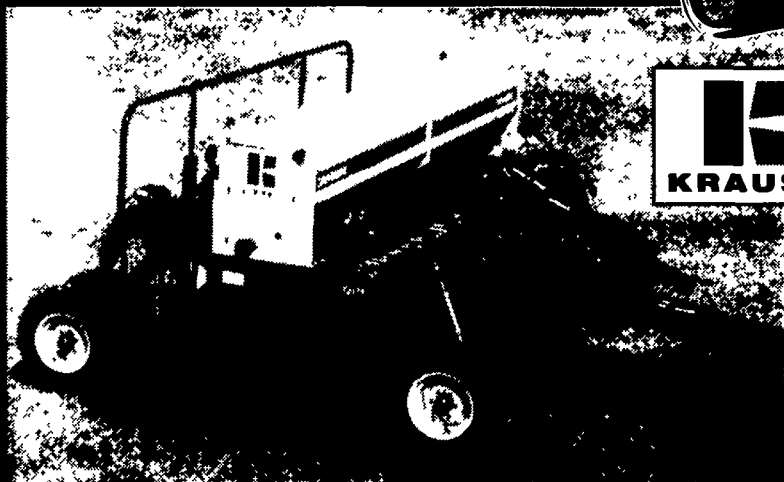
HOOPER
HOOPER, Inc
THREE LOCATIONS

INTERCOURSE, PA
800 732-0017

MIDDLETOWN, DE
800 341-4028

McALISTERVILLE, PA
800 433-6679

Our Drills Hit the Mark



KRAUSE

5250 PRO-SYSTEM NO-TILL GRAIN DRILLS

- Precision Residue Openers
- Staggered Rows
- 3" x 13" Press Wheels
- 3/4" Fluted N/T Coulters
- Small Grass Seed Attachment
- Acre Meter
- Available in 13' or 15'
- Equipped With Hooper's Front Wheel Drive For Optimum Weight Transfer And Seed Depth Control

The Krause 5250 PRO-System no-till drill is ideal for either no-till or conventional planting. Featuring the patented Precision Residue Opener, the Krause 5250 no-till drill delivers the most accurate seed depth control available. That's because the Krause 5250 no-till drill has a 3"x13" depth gauging wheel in front of a double-disc opener, followed by an adjustable depth press wheel. The result? Unmatched Seed depth control.

FINANCING AVAILABLE

HOOPER
HOOPER, Inc
THREE LOCATIONS

INTERCOURSE, PA
800 732-0017

MIDDLETOWN, DE
800 341-4028

McALISTERVILLE, PA
800 433-6679

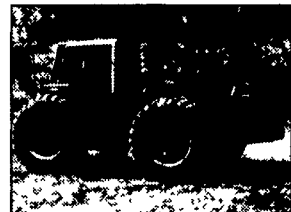
PUT ONE OF THESE



B 19590 1996 JD 8400 MFD Cab, 2386 Hours, 18 4x46 Duals, 225 HP



A 23043 1990 CIH 7130 MFD Cab, 7279 Hrs, 18 4 R 42 Duals, 172 HP



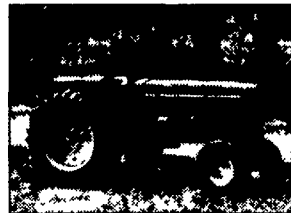
C 31092 1980 IH 3788 4WD Cab, 6571 Hrs, 20 8 x 38 Rear Tires, 170 HP



A 22784 1999 CIH MX 200 MFD Cab, 513 Hrs, 18 4x42 Duals, 165 HP



B 19582 1991 CIH 7120 2WD Cab, 3093 Hrs, 18 4x46 Rear Tires, 151 HP



C 31016 1973 JD 4430 2WD, 5980 Hrs, 20 8x38 Rear Tires, 125 HP



B 19377 1968 IH 756 Cab, 5058 Hours, 76 HP

RENTAL TRACTORS

HOOPER HAS RENTAL TRACTORS FOR SALE, RENT OR LEASE. SCHEDULE YOUR RENTAL TRACTOR NOW!

150 + HORSEPOWER

NO.	YR	MAKE	DESCRIPTION	HP
B 18993	1997	CIH	9370 Quadtrac, 1495 Hours 30' Tracks	360 HP
B 19510	1980	ST	310 Cab, 7333 Hours, 20 8 x 38 Duals,	310 HP
A 23031		ST	280 4WD, 23 1 x 34 Duals,	280 HP
B 19203	1978	Vers	875 Cab, 3901 Hours 20 8 Rear Tires,	247 HP
B 19590	1996	JD	8400 MFD Cab, 2386 Hours, 18 4 x 46 Duals,	225 HP
B 18836	1995	CIH	7250 MFD Cab, 1740 Hours, 20 8 x 42 Duals,	215 HP
B 19947	1999	CIH	MX 240 MFD Cab, 459 Hours,	205 HP
B 19586	1991	CIH	7140 MFD Cab, 3134 Hours, 18 4 x 46 Duals,	197 HP
B 19585	1991	CIH	7140 MFD Cab, 3388 Hours, 18 4 x 46 Duals,	197 HP
B 19584	1991	CIH	7140 MFD Cab, 3083 Hours, 18 4 x 46 Duals,	197 HP
B 19217	1997	CIH	7240 MFD Cab, 2209 Hours, 20 8 x 42 Duals,	195 HP
A 23070	1984	JD	4850 MFD Cab, 6971 Hours, 20 8 x 42 Duals,	192 HP
A 18853	1999	CIH	MX 220 MFD Cab, 221 Hours,	186 HP
A 23046	1979	Case	2590 2WD Cab, 6636 Hours, 20 8 x 38 Duals,	180 HP
A 23043	1990	CIH	7130 MFD Cab, 7279 Hours, 18 4 R 42 Duals,	172 HP
C 31092	1980	IH	3788 MFD Cab, 6579 Hours, 20 8 x 38 Rear Tires,	170 HP
A 22559	1983	JD	4650 MFD Cab, 5800 Hours, 20 8 x 38 Duals,	165 HP
A 22784	1999	CIH	MX 200 MFD Cab, 513 Hours, 18.4 x 42 Duals,	165 HP
C 19589	1992	JD	4560 2WD Cab, 2280 Hours, 18 4 x 46 Rear Tires,	156 HP
B 19587	1992	JD	4560 2WD Cab, 1806 Hours, 18 4 x 46 Duals,	156 HP
B 17774	1997	CIH	8920 MFD Cab, 2073 Hours, 18 4 x 42 Duals,	155 HP
B 40119		CIH	7220 MFD Cab, 2550 Hours,	155 HP
A 23004	1988	CIH	7120 2WD Cab, 4883 Hours, 20 8 x 38 Rear Tires,	151 HP
B 19583	1991	CIH	7120 2WD Cab, 2115 Hours, 18 4 x 46 Rear Tires,	151 HP
B 19582	1991	CIH	7120 2WD Cab, 3093 Hours, 18.4 x 46 Rear Tires,	151 HP
B 19581	1991	CIH	7120 MFD Cab, 3119 Hours, 18 4 x 46 Duals,	151 HP

100 - 150 HORSEPOWER

NO.	YR	MAKE	DESCRIPTION	HP
B 23077	1999	CIH	MX 180 MFD Cab, 46 Hours, 18 4 x 42 Rear Tires,	145 HP
B 40092		IH	1486 2WD,	145 HP
C 19501	1989	CIH	7110 2WD Cab, 2531 Hours, 18 4 x 38 Duals,	131 HP
A 17811	1979	IH	1086 2WD Cab, 4533 Hours, 20 8 x 38 Rear Tires,	131 HP
C 22860	1976	IH	1086 2WD Cab, 4962 Hours, 20 8 x 38 Rear Tires,	131 HP
A 23190		IH	1086 2WD, 5072 Hours, 18 4 x 38 Rear Tires,	131 HP
A 22937	1999	CIH	MX 150 MFD Cab, 491 Hours,	130 HP
C 31016	1973	JD	4430 2WD, 5980 Hours, 20 8 x 38 Rear Tires,	125 HP
A 23069	1992	CIH	5250 2WD Cab w/Ldr, 2743 Hours, 18 4R38 Tires,	112 HP
A 23013	1995	CIH	5250 MFD Cab w/Ldr, 2346 Hours, 18 4 x 38 Tires,	112 HP
A 23186	1993	CIH	5250 MFD Cab,	112 HP
C 31342	1988	JD	4050 2WD ROPS, 5080 Hours, 18 4 x 38 Rear Tires,	100 HP
A 23138	1995	CIH	5240 MFD Cab, 3877 Hours, 18 4 x 38 Rear Tires,	100 HP

Less Than 100 HORSEPOWER

NO.	YR	MAKE	DESCRIPTION	HP
A 23187		CIH	5140 2WD Cab w/loader,	94 HP
B 19890	1996	CIH	5230 MFD Cab, 1775 Hours, 18 4 x 34 Duals,	90 HP
C 19554	1977	IH	886 2WD Cab, 4152 Hours, 18 4 x 34 Rear Tires,	90 HP
C 31138	1968	IH	756 Diesel, 7201 Hours, 16 9 x 38 Rear Tires,	76 HP
B 19377	1968	IH	756 Cab, 5058 Hours,	76 HP
A 23124	1993		Hstrn-Fiat 80-66 ROPS, 1000 Hrs, 18.4x30 Rear Tires,	70 HP
A 23121		IH	656 Gas, 15 9 x 38 Rear Tires,	62 HP
A 19381	1969	IH	656H W/Ldr, Diesel, 15 5 x 38 Rear Tires,	66 HP
B 19599	1960	IH	460D,	52 HP
C 19755	1976	IH	464, Gear, 7800 Hours, 14 9 x 28 Rear Tires,	46 HP
B 40048	1999	CIH	C50 MFD ROPS w/Ldr, 222 Hours, 14 9x28 Tires,	40 HP
B 18252	1970	IH	580 CK w/Ldr, Cab, 1274 Hours, 14 9 x 24 Rear Tires	
B 19689	1984	Ford	2110, 2661 Hours	
B 19898		Case	800, Gear, Gas, 15 5 x 38 Rear Tires	

Financing Available On All Used Tractors From Hooper

Special Programs Available for Under 100 HP Tractors

- 1) 4 Month Interest Waiver
- 2) Fixed Low Rate Financing - as Low as 7.9% for 36 Months
- 3) Split Rate Financing - 5.25% for the First 12 Months
- 4) Lease Options

Special Programs Available for 100+ HP Tractors

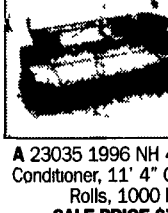
- 1) 4 Month Interest Waiver
- 2) Fixed Low Rate Financing - as Low as 6.9% for 36 Months
- 3) Split Rate Financing - 4.9% for the First 12 Months
- 4) Lease Options

Call a Hooper Salesman Today For Details

Financing Options Available to Change Without Notice



A 22444 1989 Heslar Baler, 4 x4', 26.0 WAS \$38,500, IS



A 23035 1996 NH Conditioner, 11' 4" Rolls, 1000 SALES PRICE \$



C 31177 IH 43 With Thrower, 1 WAS \$3,200, IS

USED DIS

B 19694	KR	4915A
A 23092	MF	520 12
A 23104	Mlr	10'
A 23117	KR	4924A
B 19354	MF	820 23
A 23166	KR	2483N
B 19435	KR	4918 2
B 19610	KR	4942W
B 18976	IH	496 31
B 19360	JD	210 15
C 31217	JD	230 21
B 18869	JD	630 21
B 18970	KR	4907 2
B 17155	KR	4927A
B 16620	ML	28'

USED TILL

B 19636	DMI	530 Su
B 19359	DMI	Crumb
A 18868	DMI	3 Arm
B 18505	DMI	5 Shan
A 29955	DMI	5 Shan
A 23032	DMI	7 Shan
B 22866	DMI	7 Shan
B 19130	FR	10 12
A 23010	IH	183 Cu
A 23169	KW	18' Fie
B 18068	MF	18' Cu
B 17467	MG	PT-2 3'
B 18067	UM	20' Cu
B 22431	KR	6331 L
B 18870	CIH	720 6
B 19843	IH	800 10
B 17476	IH	145 4
B 17038	IH	710 Ph
B 1991	BR	X108 2
B 17326	UM	29' Ba

USED PLANTERS

A 23119	GP	10' EV
A 23029	GP	24' Dr
B 16662	GP	15' Dr
B 18940	GP	30' Cr
C 31352	IH	800 6
B 17790	IH	800 6
C 23011	IH	800 4
B 19196	JD	30 Dn
A 22883	JD	8350
C 22782	JD	8300
B 16778	JD	7240
B 19754	JD	7000-
B 30373	WH	5400

USED HAY &

A 23111	NH	1431
A 23035	NH	415 M
A 22444	Hstrn	4900
A 23165	Hstrn	4900
C 22296	JD	1470
A 22880	NH	1431
A 22723	RH	Sr20-
B 18906	CIH	8580
B 17722	CIH	1490
C 31177	IH	435 E

