

Estimated Daily Livestock Slaughter

Under Federal Inspection
Wednesday, July 5, 2000

	CATTLE	CALVES	HOGS	SHEEP
Wednesday 2000-02-09 (est)	127,000	5,000	364,000	13,000
Week ago (est)	129,000	4,000	348,000	11,000
Year ago (act)	129,000	5,000	359,000	13,000
Week to date (est)	253,000	8,000	692,000	19,000
Same Period Last Week (est)	391,000	12,000	1,034,000	31,000
Same Period Last Year (act)	261,000	11,000	751,000	26,000

Morrison's Cove Livestock

Martinsburg, Pa.
Report Supplied by Auction
Monday, July 3, 2000

CATTLE: 72 HEAD.
STEERS: CHOICE 68.00-71.00, GOOD 65.00-68.00.
HEIFERS: CHOICE 67.00-70.00, GOOD 60.00-66.00, UTILITY AND COMMERCIAL 37.50-48.00, CANNER AND LOW CUTTER 22.00-36.00.
BULLOCKS: 48.00-55.00.
BULLS: YG#1 47.00-58.00.
FEEDER CATTLE: STEERS 57.50-69.00, BULLS 55.00-68.00, HEIFERS

50.00-65.00.
CALVES: 135. PRIME, NO MARKET TEST, CHOICE 90.00-105.00, GOOD 80.00-90.00, STANDARD 20.00-55.00; HOLSTEIN BULLS 90-130 LBS. 60.00-110.00, HOLSTEIN HEIFERS 90-130 LBS. 100.00-210.00.
HOGS: 214....US#1-2 45.50-47.00, US#1-3 43.00-44.00.
SOWS: US#1-3 33.00-39.00.
BOARS: 13.00-30.00.
FEEDER PIGS: 58. US#1-3 20-50 LBS. 19.00-65.00.
SHEEP: 45 HEAD. CHOICE LAMBS 85.00-90.00, GOOD LAMBS 80.00-85.00, SL. EWES 22.00-38.00.
GOATS: 12.00-81.00.

Mercer Livestock Auction

Mercer, Pa.
Tuesday, July 4, 2000

Report Supplied By PDA

CATTLE 265...(SUPPLIED BY THE AUCTION)...steers were active.
SLAUGHTER STEERS: Choice 2-4 1185-1425 lbs 65.25-71.00, Select 1-3 62.00-68.00, Standard 1-2 53.00-57.50.
HOLSTEINS: Choice 2-3 1150-1550 lbs 60.50-64.00.
HEIFERS: Choice 2-4 1080-1400 lbs 64.75-74.00, Select 1-3 62.00-66.00, Standard 1-2 52.00-59.00.
COWS: Breakers 75-80% lean 43.00-49.50, one 52.00, Boners 80-85% lean 38.00-42.50, Lean 85-90% lean 33.00-36.75. Shells down to 24.50.
BULLS: Yield Grade 1 965-1650 lbs 52.00-58.50, one 65.00, Yield Grade 2 930-1450 lbs 49.00-55.50.
FEEDER CATTLE: STEERS: Medium 1 360-740 lbs 82.00-109.00; HEIFERS: Medium 1 320-800 lbs 73.00-92.00; BULLS: Medium 1 290-550 lbs 87.00-108.00, 400-900 lbs 59.00-65.00.
CALVES 101...VEALERS: Good 70-190 lbs 30.00-65.00.

St. Louis Feeder Cattle

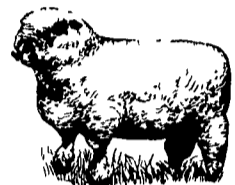
Springfield, IL
Thu Jul 6, 2000

Report Supplied By USDA

USDA-IL Market News Service
Farmers Livestock Marketing Assn auction at Greenville, IL Wed Jul 5, 2000
Cattle and calves: 519 head. Compared to last week, slaughter steers and heifers were steady. Supply mainly Choice slaughter steers and heifers. Light supply of holstein steers.
Total Receipts this week: 519 Last week: 802 Last year: 671
SLAUGHTER STEERS: Choice 2-4 1000-1500 lbs 66.00-69.00, 1500-1600 lbs 65.00-68.00; Yield Grade 2-3 and Fancy 2-4 1125-1500 lbs 69.00-71.00, few up to 71.25; Select and Choice 2-3 975-1375 lbs 64.00-67.00. Select 2-3 950-1275 lbs 60.00-64.00.
HOLSTEIN STEERS: Choice 2-3 1300-1700 lbs 61.00-64.00, few up to

64.25; Select and Choice 2-3 1250-1575 lbs 59.00-62.00; Select 2-3 1150-1600 lbs 54.00-59.00.
SLAUGHTER HEIFERS: Choice 2-4 950-1300 lbs 66.00-69.00, YG 2-3 and Fancy 2-4 1050-1350 lbs 69.00-71.00, few up to 71.25; Select and Choice 2-3 900-1250 lbs 64.00-67.00. Select 2-3 900-1200 lbs 60.00-64.00.
HEIFERETTES: Few Medium and Large Frame 1150-1400 lbs 45.00-56.00.
FEEDER CATTLE: Compared with last week not enough of any one class of feeder steers and heifers to fully establish a market.

Slaughter Cows and Bulls: 160 head. Compared to last week cows and bulls fully steady. SLAUGHTER COWS: % Lean Weight Price Breakers 75-80 % 850-1200 lbs 38.00-42.00 Boners 80-85 % 850-1200 lbs 40.00-45.00 High Yielding 80-85 % over 1100 lbs 42.00-45.00 Lean 85-90 % 850-1200 lbs 36.00-39.00 85-90 % 750-850 lbs 32.00-36.00 85-90 % under 750 lbs 28.00-32.00
BULLS: Yield Grade 1-2 1500-1900 lbs 48.00-53.00, individual YG 2 2150 lbs 45.00. Yield Gr 1 1600-2000 lbs 53.00-54.00, Individual 1600 lbs at 56.00.

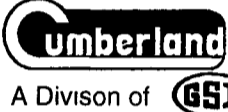


Farmer Boy Ag Systems, Inc.

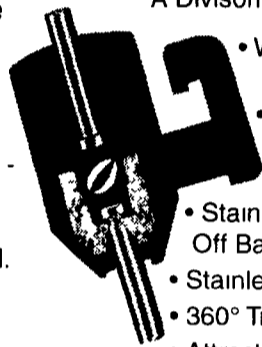
Your One-Stop Farm Supply Center

WATERING

WATERING SYSTEM by



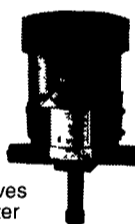
- Standard large volume supply pipe - 1 05" (27mm).
- Opaque supply pipe prevents algae
- Standard support pipe - 1.05" (27 mm)
- Optional extruded aluminum support rail.
- Easy push together assembly
- No glue necessary



- Water Flow Controlled
- Left or Right J-Type Connection
- Stainless Steel Shut Off Ball
- Stainless Steel Seat
- 360° Trigger Pin
- Attracts Chicks

MEDICATORS

DOSATRON LIQUID DISPENSER

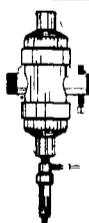


This medicator accurately meters antibiotics, coccidiostats, drugs, disinfects, sulfas, vaccines, wormers, vitamins, fertilizers or chemical additives into livestock and poultry drinking water or into irrigation systems

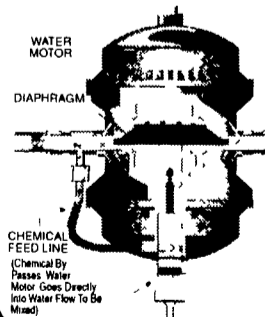


Dosmatic Medicator

Easily installed in the water line this medicator has only half the moving parts as the average one. It delivers properly mixed medication automatically as the water is consumed



Water Powered Chemical Feed Pump
Non-Electric, Rugged
Industrial Grade Construction



Chemilizer

HN 55 MEDICATOR
The Smart 2 Part System
1 Water Motor
2 Chemical Pump
2-YEAR GUARANTEE

EXPERIENCED & KNOWLEDGEABLE SALES STAFF

FEEDING FEED BINS

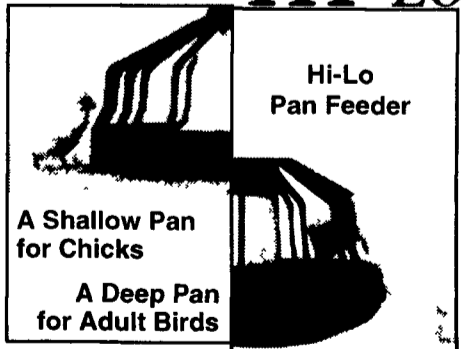
- We assemble, deliver and set up bins on your farm
- Weather tight die-formed roof
- Stronger engineered sidewalls
- Ground controlled fill caps
- Galvanized roll-formed legs
- Engineered leg braced systems
- Fast flowing hopper bottom



With CORE AUGERS

and Flex-flo™ AUGER SYSTEM
in 2 1/4" dia. to 5" dia.

Cumberland HI-LO



Hi-Lo Pan Feeder

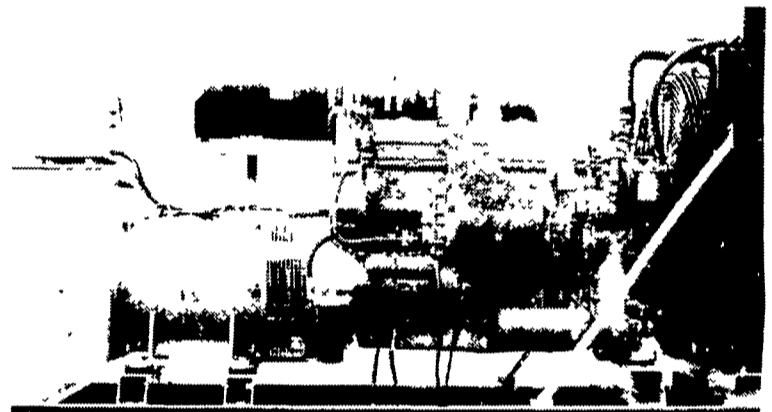
A Shallow Pan for Chicks

A Deep Pan for Adult Birds

3' & 4' CRAFT PAPER FOR FEEDING



GENERATORS



MARTIN ELECTRIC PLANTS • Manufacturer of:
DIESEL, LP GAS, NATURAL GAS, PTO
Automatic & Manual Start Systems
USED UNITS ALSO AVAILABLE

Call Us For All Your Generator Needs!

MARTIN ELECTRIC PLANTS

280 Pleasant Valley Rd., Ephrata, PA 17522-8620
800-713-7968
Tel: 717-733-7968 Fax: 717-733-1981

DURABED COW MATTRESS

The Only One Of Its Kind

80 oz. Waterproof



- The Heaviest
- The Most Effective
- The BEST
- The Driest
- The Strongest

Why Buy Anything Else?

DuraBrisket®

Easy to install 8 ft. sections
\$12.00 per stall

Ask about...

HDPE POLYBOARD

Milk houses, manger liners,

MUDGUARD non woven geotextile

Get out of the mud!



- Martin's Farm Supply
Greencastle
717-597-4283
- Martin Construction Co.
Kutztown
610-683-6120
- Ammon Fisher
Ronks
717-687-0349
- Farmer Boy Ag Systems
Myerstown
800-845-3374

North Brook Farms
Toll Free: 877-624-2638



7/8/00

Hours: Mon-Fri 6:30 to 5:30
Sat 7:30 to Noon

Farmer Boy Ag Systems Inc.

410 East Lincoln Avenue, Myerstown, PA 17067
717-866-7565 • 1-800-845-3374

