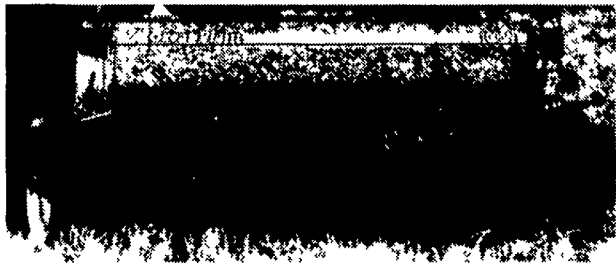


Great Plains

HOW MUCH YOU REAP DEPENDS ON HOW WELL YOU SOW

*Great Plains Drills From Hooper
Seed In No-Til & Conventional Tillage.*



GREAT PLAINS 1005 NO-TILL DRILL

- 7 or 7 1/2" Spacing
- 3 x 13 Center Rib Press Wheels
- 5/8" Wavy Turbo No-Till Coulters
- Small Seed Attachment
- Weight Bar Package

We Have 10' Units in Stock and Ready for Immediate Delivery.



INTERCOURSE, PA
800 732-0017
MIDDLETOWN, DE
800 341-4028
McALISTERVILLE, PA
800 433-6679

Our Drills Hit the Mark



5250 PRO-SYSTEM NO-TILL GRAIN DRILLS

- Precision Residue Openers
- Staggered Rows
- 3" x 13" Press Wheels
- 3/4" Fluted N/T Coulters
- Small Grass Seed Attachment
- Acre Meter
- Available in 13' or 15'
- Equipped With Hooper's Front Wheel Drive For Optimum Weight Transfer And Seed Depth Control

The Krause 5250 PRO-System no-till drill is ideal for either no-till or conventional planting. Featuring the patented Precision Residue Opener, the Krause 5250 no-till drill delivers the most accurate seed depth control available. That's because the Krause 5250 no-till drill has a 3"x13" depth gauging wheel in front of a double-disc opener, followed by an adjustable depth press wheel. The result? Unmatched Seed depth control.

FINANCING AVAILABLE

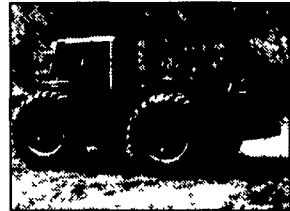


INTERCOURSE, PA
800 732-0017
MIDDLETOWN, DE
800 341-4028
McALISTERVILLE, PA
800 433-6679

PUT ONE OF THESE



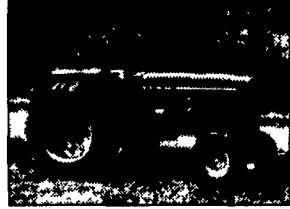
B 19590 1996 JD 8400 MFD Cab,
2386 Hours, 18 4x46 Duals, 225 HP



C 31092 1980 IH 3788 4WD Cab,
6571 Hours, 20 8 x 38 Rear Tires, 170 HP



A 22784 1999 CIH MX 200 MFD
Cab, 513 Hours, 18 4 x 42 Duals,
165 HP



C 31016 1973 JD 4430 2WD,
5980 Hours, 20.8 x 38 Rear Tires,
125 HP



A 22911 1986 CIH 1594 2WC Cab,
1650 Hours, 18 4 x 38 Rear Tires,
85 HP



B 19377 1968 IH 756 Cab,
5058 Hours, 76 HP

RENTAL TRACTORS

HOOBER HAS RENTAL
TRACTORS FOR SALE, RENT
OR LEASE. SCHEDULE
YOUR RENTAL TRACTOR
NOW!

150 + HORSEPOWER

NO.	YR	MAKE	DESCRIPTION	HP
B 18993	1997	CIH	9370 Quadtrac, 1495 Hours, 30" Tracks,	360 HP
B 19510	1980	ST	310 Cab, 7333 Hours, 20 8 x 38 Duals,	310 HP
A 23031		ST	280 4WD, 23 1 x 34 Duals,	280 HP
B 19203	1978	Vers	875 Cab, 3901 Hours, 20 8 Rear Tires,	247 HP
B 19590	1996	JD	8400 MFD Cab, 2386 Hours, 18 4 x 46 Duals,	225 HP
A 22780	1996	CIH	7250 MFD Cab, 2100 Hours, 20 8 x 42 Duals,	215 HP
B 18836	1995	CIH	7250 MFD Cab, 1740 Hours, 20 8 x 42 Duals,	215 HP
B 19947	1999	CIH	MX 240 MFD Cab, 459 Hours,	205 HP
B 19586	1991	CIH	7140 MFD Cab, 3134 Hours, 18 4 x 46 Duals,	197 HP
B 19585	1991	CIH	7140 MFD Cab, 3388 Hours, 18 4 x 46 Duals,	197 HP
B 19584	1991	CIH	7140 MFD Cab, 3083 Hours, 18.4 x 46 Duals,	197 HP
B 19217	1997	CIH	7240 MFD Cab, 2209 Hours, 20 8 x 42 Duals,	195 HP
A 23070	1984	JD	4850 MFD Cab, 6971 Hours, 20 8 x 42 Duals,	192 HP
A 18853	1999	CIH	MX 220 MFD Cab, 221 Hours,	186 HP
A 23046	1979	Case	2590 2WD Cab, 6636 Hours, 20 8 x 38 Duals,	180 HP
A 23043	1990	CIH	7130 MFD Cab, 7279 Hours, 18 4 R 42 Duals,	172 HP
C 31092	1980	IH	3788 MFD Cab, 6579 Hours, 20 8 x 38 Rear Tires,	170 HP
A 22559	1983	JD	4650 MFD Cab, 5800 Hours, 20 8 x 38 Duals,	165 HP
A 22784	1999	CIH	MX 200 MFD Cab, 513 Hours, 18 4 x 42 Duals,	165 HP
C 19589	1992	JD	4560 2WD Cab, 2280 Hours, 18 4 x 46 Rear Tires,	156 HP
B 19587	1992	JD	4560 2WD Cab, 1806 Hours, 18 4 x 46 Duals,	156 HP
B 17774	1997	CIH	8920 MFD Cab, 2073 Hours, 18 4 x 42 Duals,	155 HP
A 23004	1988	CIH	7120 2WD Cab, 4883 Hours, 20 8 x 38 Rear Tires,	151 HP
B 19583	1991	CIH	7120 2WD Cab, 2115 Hours, 18 4 x 46 Rear Tires,	151 HP
B 19582	1991	CIH	7120 2WD Cab, 3093 Hours, 18 4 x 46 Rear Tires,	151 HP
B 19581	1991	CIH	7120 MFD Cab, 3119 Hours, 18 4 x 46 Duals,	151 HP

100 - 150 HORSEPOWER

NO.	YR	MAKE	DESCRIPTION	HP
B 23077	1999	CIH	MX 180 MFD Cab, 46 Hours, 18 4 x 42 Rear Tires,	145 HP
C 19501	1989	CIH	7110 2WD Cab, 2531 Hours, 18 4 x 38 Duals,	131 HP
A 17811	1979	IH	1086 2WD Cab, 4533 Hours, 20 8 x 38 Rear Tires,	131 HP
C 22860	1976	IH	1086 2WD Cab, 4962 Hours, 20 8 x 38 Rear Tires,	131 HP
C 31084	1977	IH	1086 2WD ROPS, 5477 Hours, 18 4 x 38 Rear Tires,	131 HP
A 22937	1999	CIH	MX 150 MFD Cab, 491 Hours,	130 HP
C 31016	1973	JD	4430 2WD, 5980 Hours, 20 8 x 38 Rear Tires,	125 HP
A 23069	1992	CIH	5250 2WD Cab w/Ldr, 2743 Hours, 18 4R38 Tires,	112 HP
A 23013	1995	CIH	5250 MFD Cab w/Ldr, 2346 Hours, 18 4 x 38 Tires,	112 HP
C 31342	1988	JD	4050 2WD ROPS, 5080 Hours, 18 4 x 38 Rear Tires,	100 HP
A 23138	1995	CIH	5240 MFD Cab, 3877 Hours, 18 4 x 38 Rear Tires,	100 HP

Less Than 100 HORSEPOWER

NO.	YR	MAKE	DESCRIPTION	HP
B 19890	1996	CIH	5230 MFD Cab, 1775 Hours, 18 4 x 34 Duals,	90 HP
C 19554	1977	IH	886 2WD Cab, 4152 Hours, 18 4 x 34 Rear Tires,	90 HP
A 22911	1986	CIH	1594 2WD Cab, 1650 Hours, 18 4 x 38 Rear Tires,	85 HP
C 31274		Fiat	880/5 MFD Cab, 2385 Hours, 18 4 x 34 Rear Tires,	81 HP
C 31138	1968	IH	756 Diesel, 7201 Hours, 16 9 x 38 Rear Tires,	76 HP
B 19377	1968	IH	756 Cab, 5058 Hours,	76 HP
A 23124	1993		Hstn-Fiat 80-66 ROPS, 1000 Hrs, 18 4x30 Rear Tires,	70 HP
A 23121		IH	656 Gas, 15 9 x 38 Rear Tires,	62 HP
A 19381	1969	IH	656H W/Ldr, Diesel, 15 5 x 38 Rear Tires,	66 HP
B 19599	1960	IH	460D,	52 HP
C 19755	1976	IH	464, Gear, 7800 Hours, 14 9 x 28 Rear Tires,	46 HP
B 18252	1970	IH	580 CK w/Ldr, Cab, 1274 Hours, 14 9 x 24 Rear Tires	
B 19689	1984	Ford	2110, 2661 Hours	
B 19898		Case	800, Gear, Gas, 15 5 x 38 Rear Tires	

Financing Available On All Used Tractors From Hooper

Special Programs Available for Under 100 HP Tractors

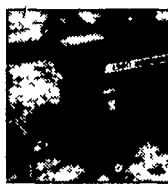
- 1) 4 Month Interest Waiver
- 2) Fixed Low Rate Financing - as Low as 7.9% for 36 Months
- 3) Split Rate Financing - 5.25% for the First 12 Months
- 4) Lease Options

Special Programs Available for 100+ HP Tractors

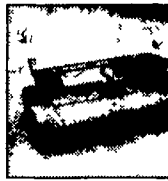
- 1) 4 Month Interest Waiver
- 2) Fixed Low Rate Financing - as Low as 6.9% for 36 Months
- 3) Split Rate Financing - 4.9% for the First 12 Months
- 4) Lease Options

Call a Hooper Salesman Today For Details

Financing Options Available to Change Without Notice



A 22444 Hesston 4260
26,000 Bales
WAS \$38,500, IS



A 23035 1996 NH
Conditioner, 11' 4"
Rolls, 1000
SALE PRICE \$



C 31177 IH 438
With Throw
WAS \$3,200, IS

USED DIS

B 19694	KR	4915A
A 23092	MF	520 12
A 23104	Mlr	10'
A 23117	KR	4924A
B 19354	MF	820 23
A 23166	KR	2483N
B 19435	KR	4918
B 19610	KR	4942W
B 18976	IH	496 31
B 19360	JD	210 15
C 31217	JD	230 21
B 18669	JD	630 21
B 18970	KR	4907 2
B 17155	KR	4927A
B 16620	ML	28'

USED TILL

B 19636	DMI	530 Su
B 19359	DMI	Crumb
A 18868	DMI	3 Arm
B 18705	DMI	5 Shar
A 22955	DMI	5 Shar
A 23032	DMI	7 Shar
B 22866	DMI	7 Shar
B 19130	FR	10 12
A 23010	IH	183 Cu
A 23169	KW	18' Fie
B 18068	MF	18' Cu
B 17467	MG	PT 2 3
B 18067	UM	20' Cu
B 22431	KR	6331.1
B 18870	CIH	720 6
B 19843	IH	800 11
B 17476	IH	145 4
B 17038	IH	710 PI
B 19191	BR	X108:
B 17326	UM	29' Ba

USED PLANTER

A 23119	GP	10' E
A 23029	GP	24' D
B 16662	GP	15' D
B 18940	GP	30' C
C 31352	IH	800 E
B 17790	IH	800 E
C 23011	IH	800 4
B 19196	JD	30 Dr
A 22883	JD	8350
B 22782	JD	8300
B 16778	JD	7240
B 19754	JD	7000
B 30373	WH	5400

USED HAY &

A 23111	NH	1431
A 23035	NH	415 1
A 22444	Hstn	490C
A 23165	Hstn	490C
C 22296	JD	147C
A 22880	NH	1431
A 22723	RH	Sr20
B 18906	CIH	858C
B 17722	CIH	149X
C 31177	IH	435