

Anthony L.

LANDIS

AUTO SALES

3394 Division Hwy., New Holland, PA 17557 (717) 355-0644
Rt 322, 1-1/2 mi west of Blue Ball



89 DODGE D250LE 2WD
5.9 Cummins Turbo Diesel AT-PS-PB-AC-PW-PDL, 159,000 Mi., Blue
\$4,900

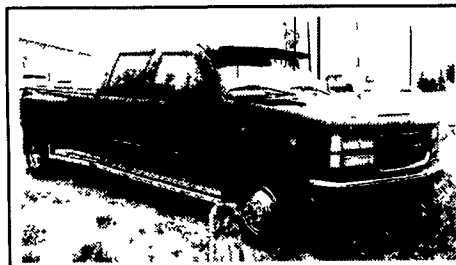


97 GMC SLE SIERRA
350 V8, AT, PS, PW, PL, A/C, PB, Cass, CD, 3rd Door, 60,000 Mi., Black & Silver
\$18,500

TRUCK CAPS • BED LINERS COMPLETE SERVICE DEPARTMENT

Apple Auto Sales, Inc.

Preowned Cars & Trucks
Route 30 - Lincoln Highway East, Gap, PA 17527
717-442-9700 • 717-299-9900 • FAX 717-442-3140
Email contactus@appleautosales.com Web www.appleautosales.com



1999 GMC Crew Cab
Dually 4x4
454 V8, AT, PS, PB, PW, PL, PM, Cruise, Tilt, A/C, AM/FM Cass., 10,000 GVW, 7,700 Mi., Maroon

- 1999 Ford F-350 4 Door X-Cab, 4x4, Dually, Triton V10, 8' Bed, AT, PS, PB, PW, PL, PM, Cruise, Tilt, A/C, AM/FM Cass., 6,500 Miles
- 1999 GMC Sierra Crew Cab, 4x4, 350 V8, AT, PS, PB, A/C, AM/FM, 6ft bed
- 1999 CHEVY 3500 CUBE TRUCK, 350 V8, AT, PS, PB, Tilt, AM/FM/Cass., A/C, Dual Tanks, 11,000 GVW 12 Ft., box w/storage (2 to choose from)
- 1999 Dodge Ram 3500, Dually 4x4, 10' Dump, Cummins 6 Cyl., 5 Spd., PS, PB, AM/FM/CD, A/C w/Plow & Salt Spreader
- 1999 Ford F-350 X-Cab Dually, V10 Triton / Auto O.D., PS, PB, PW, PL, PM, Cruise, Tilt, Delay, AM/FM/Cass., A/C, Sliding Rear Glass, 4x4, 4-doors
- 1999 Chevy Extended Cargo Van, 5.0 Vortec V8, AT, PS, PB, A/C 7,300 GVW

LIFETIME FREE INSPECTIONS • BUY & SELL



RV • UTILITY • LIVESTOCK • MARINE

Distributor For
PUTNAM Hitch Products
KINEDYNE Cargo Control
REDLINE Trailer Parts



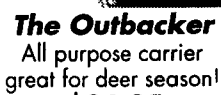
Class 2, 3, 4 & 5 Hitches
From \$81.43 to \$118.94



Hitch Hand
Add Over 3' to your pickup bed
\$136.49



2" x 27' Ratchet Strap
• 10,000 lb. Breaking Strength
• 3,335 lb. Working Range
\$17.00 ea. or box of 10 - \$159



The Outbacker
All purpose carrier
great for deer season!
\$86.25

Putnam Hitchin'Post™ Bicycle Carrier

Designed to fit square-socket receivers
3, 4 & 5 bike models
From \$89.39 to \$135.53



Combination Fifth Wheel and Gooseneck Assembly
• 5th Wheel head pivots in all directions
• Cushioned attachment for smoother, quieter towing
• Easy hookup • Fast conversion
\$489.43 Complete
\$289.38 Gooseneck Only



DAVID A. FISHER TRAILERS

5509 Lincoln Highway, Gap, PA 17527

717-442-5098



1999 FORD F250
XL SC 4x4 Diesel, AT, A/C, 26,158 Miles, Factory Warranty, Red Exterior



1999 FORD F250
XLT SC, 4x4 Diesel, AT, A/C, 9,800 Miles, Factory Warranty, Maroon/Silver Exterior



1997 FORD F450
Chassis/Cab, 137" WB, V8, AT, A/C, 19,300 Miles, 15,000 lbs. GVWR, Factory Warranty, Red Exterior



1997 FORD F350
XLT, Regular Cab, 4x4, V8, AT, A/C, Plow, 20,700 Miles, Red/White Exterior

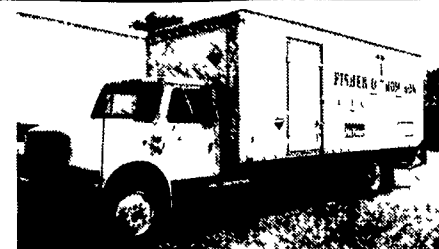
New Chassis Cabs and New Super Duties
Also Available

Sunbury Motor Company

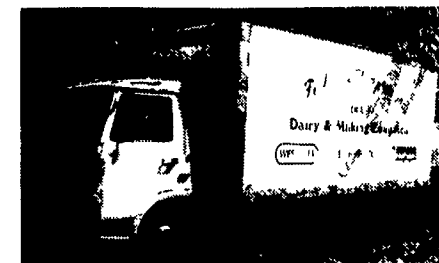
943 N. Fourth St., Sunbury
Phone 570-286-7746

SALES HOTLINE
1-800-358-8090

www.sunburymotors.com
Open Mon.-Fri. 9-8.
Saturday 9-2:30



1991 International 24' Box, Lift Gate,
Side Door, Air Ride Seat, A/C, DT466 Engine,
285,000 Mi **\$12,900**



1986 Iveco 230 Chassis Only,
Good Engine **\$2,500**
16' Box Available **\$500**

Fisher & Thompson Inc.
DAIRY & MILKING EQUIPMENT SALES & SERVICE
15 Newport Rd., Leola, PA 17540
717-656-3307

KELLER BROS.

(Buffalo Springs) Lebanon, PA

717-949-2000 or 1-800-363-2767

LEBANON COUNTY'S HEAVY DUTY TRUCK HQTRS.
Over 100 Clean Pre-Owned Vehicles
In Stock At All Times!!

<p>NEW 2000 FORD F350 CREW CAB DUALY Lariat LE Pkg, 7.3 Diesel, All The Toys</p>	<p>1995 FORD F150 SUPERCAB XLT 4x4, V8, AT, A/C, Most Options, Matching Cap, One Owner</p>	<p>94 CHEV 4X4 S-10 BLAZER 4 Door, AT, A/C, C, T, Tahoe Pkg, Black SPECIAL \$6,995</p>	<p>1998 DODGE RAM 3500 QUAD CAB DUALY Cummins Diesel, 5-Spd., All The Toys</p>
<p>1996 FORD F250 Super Cab 4x4 Diesel, 5 Spd., Low, Low Miles, Like Brand New - Just Traded</p>	<p>2000 F650 & F 750</p>		<p>1997 FORD F250 XL 4X4 Diesel, Heavy Duty, DK Green, One Owner, Just Traded</p>
<p>1996 FORD F250 SUPERCAB 4X4 AT, XLT, 460 Gas, Loaded With All Options Tan</p>	<p>2000 FORD F650 SUPER CAB 2000 FORD F750 REG. CAB Cat Diesel, Up to 33,000 GVW PRICED FOR QUICK SALE STARTING AT \$37,900</p>		<p>1994 CHEV K2500 4x4 Turbo Diesel, Silverado Pkg, AT, A/C, Very Clean</p>
<p>1997 FORD F250 SUPERCAB 4x4 Diesel, AT, XLT Trim</p>	<p>1992 JEEP 4X4 CHEROKEE 4.0 6 Cyl., AT, A/C, AM/FM/CD, Very Clean</p>	<p>1997 FORD 4X4 RANGER SUPER CAB XLT, PW, PL</p>	<p>1996 FORD CLUB WAGON Chateau, 8 Pass., Front & Rear A/C, PW, PL, Very Clean</p>
<p>1997 CHEV SUBURBAN Lt. Pkg, Leather, 5.7 Vortec V8, AT, A/C, PW, PL, Special \$22,300</p>	<p>1999 FORD EXPEDITION XLT V8, AT, A/C, PW, PL, 3rd Seat, One Owner, Only 15,000 Miles</p>	<p>1987 FORD F150 4X4 XL 5 Spd., A/C, PS, PB, AM/FM/Cassette SPECIAL \$5,795</p>	<p>1996 FORD F150 SUPERCAB XLT 4x4, V8, 5-Speed, PW, PL, C, T, A/C</p>

KELLER BROS. FORD HAS SERVED CENTRAL PENNA. AREA FOR MORE THAN 78 YEARS.