

7511 Allentown Blvd.  
Harrisburg, PA 17112

**75 TRUCKS  
IN STOCK**

**AFFORDABLE  
CARS AND TRUCKS, INC.**

**717-652-1925**  
FAX 717-652-4888  
www.affordablecarandtruck.com

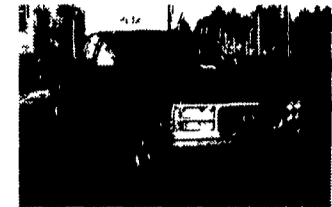
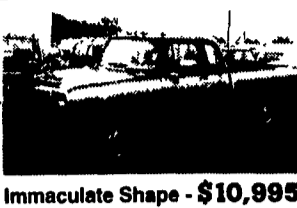
**"You Gotta Believe!!"**

Exit 27, Rt. 81; Rt. 22 East of Harrisburg; 3 Miles North of Hershey



**95 Ford F250 XL**  
4x4, 8600 GVW,  
Extra Nice Trucks,  
Choose From 5-Spd.  
or Automatic,  
Fully Loaded,  
Only 78,000 Miles  
**\$10,995 & Up**

**92 Dodge 250 Ext.**  
Cab 3/4 Ton  
8600 GVW, Cummins  
Turbo Diesel, Rare 5 Spd.  
LE Pkg. All Options,  
Incl. 2-Tone Paint &  
Every Service Record  
Since New. Only 107K Mi., Immaculate Shape - **\$10,995**



**94 Chev 1500 Silverado**  
4x4, Ext Longbed, All Black, 350 +  
Loaded, Extra Clean, 100K Mi  
**\$12,995**



**87 Ford F250 XLT Lariat**  
4x4, Super Cab, Choose From  
6 9 International Diesel or 5 8 Gas,  
2 Available, Fully Loaded, AT, A/C,  
PW T, More, Mint Condition, 100k Mi  
**\$8,995 Ea.**



**95 Chev 1500 Silverado 4x4**  
Choose from 350 V8, Loaded **\$12,995**  
or Economical V6, Loaded **\$8,995**  
Both Super Clean, Low Miles,  
One Owners!



**96 Ford F250 XL**  
4x4 Ext. Cab, 7.3 Power Stroke w/Rare  
5 Sp. & Loaded, Absolutely New  
Throughout, Guaranteed, 140K Mi  
**\$17,900 \$16,995**



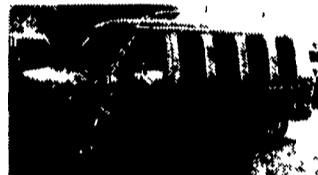
**90 Ford F250 XLT Lariat**  
4x4, 351, AT, AC & Loaded Up,  
Black & Beautiful, Mint Cond. Truck,  
100K Mi.  
**\$7,495**



**94 Dodge Ram 2500**  
Laramie SLT, 4x4 Cummins Turbo  
Diesel, AT, A/C, PW, PL, Loaded,  
Only 114K Mi. All Records,  
Excellent Shape  
**\$14,900**



**90 Chev Suburban 4x4**  
Barn Doors, Dual A/C, 8-Pass.,  
Super Nice Vehicle  
All 100K Mi., 4-Avail 88-91  
**\$7,500-\$10,000**



**91 Ford Explorer Hi-Top  
Conversion Van**  
V8, w/New Rebuilt AT, Dual A/C, TV,  
VCR, 100k Mi., Very Clean & Well  
Maintained Look  
**\$5,995 \$5,495**



**93 Chev 2500 H.D.**  
Silverado, 4x4, 350, AT, 8,600 G.V.W.  
A/C, Most Options, Mint Cond.,  
108K Mi.  
**\$10,995**

**MACK PARTS FOR  
SALE:** Engines, blocks,  
heads & cranks, cobs,  
hoods & doors, trans,  
rears. ALL MACK  
PARTS. REASONABLE  
PRICES. MACK TRUCKS  
BOUGHT (complete or  
parts). 1-888-625-6485

**TRUCKERS**

27' HD RATCHETS.....\$13.95  
WINCH STRAPS.....\$12.95  
RUBBER T. STRAPS.....54¢  
REFLEXITE RED/WHITE TAPE.....82¢/Ft.  
TIRONIE TAPPS  
(800) 874-2928 • FAX: (570) 584-3127



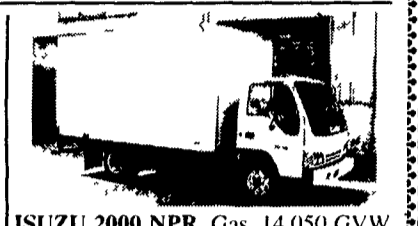
**1978 IHC 1800 Dump MV446 Gas;**  
5-Spd & 2-Spd Rear, 30,200 GVW, P/S,  
10 00x20 on Spoke, 9' Dump Body



**1997 ISUZU NPR C & C ONLY,**  
12,000 GVW, AT, Diesel, A/C, Stereo,  
Super Low Miles, Will Take 14 Ft Body



**1996 INTERNATIONAL 4700, DT466,**  
175 HP, 5 Spd, 25,500 GVW, 24 Ft Van  
Body 5 Spd or AT. **LOW MILES.**



**ISUZU 2000 NPR, Gas, 14,050 GVW,**  
250 HP, V8 Engine, Auto Trans, A/C  
AM/FM Cass, 14' Van Body **GREAT  
PRICE OR LEASE!**



**2001 ISUZU NPR, "Millennium  
Edition" 175 HP Diesel, AT, Air,  
Stereo, PW & PL, 14 Ft Van Body,  
12,000 GVW, Limited Edition, Silver**



**1990 FORD LN 7000, 6 6L 185 HP**  
Diesel, 6-Spd, 30,000 GVW, 16' Stake  
Body, 257,000 Miles

**LOTS OF OTHER ISUZUS IN STOCK**

**WE DELIVER ANYWHERE!!!**

**FIVE STAR ISUZU** ★★ ★  
New Toll Free - 1-877-54-ISUZU Keith Eshelman  
(47898)

**LIGHT DUTY  
COMMERCIAL TRUCKS**

**PONTIAC • BUICK • GMC**

<p><b>2000 GMC SAFARI MARK III CONVERSION VAN</b> Luxury capt. chairs, fold. bed, video player, 9 color TV, game ready, Pro Air central heat/AC and more! Stk #7631 Was \$33,957 <b>\$26,995</b></p>	<p><b>2000 GMC SIERRA 3500 STAKEBODY</b> Omaha Heavy Duty Body, 12x96" Wood Floor, Steel Racks, AC, AT, HD Chassis, Locking Rear and more! Stk# 7734 <b>\$22,995</b></p>	<p><b>2000 GMC SIERRA 1500 4x4</b> V8, AC lock rear skid plates, HD suspension AM/FM cass. Stk#7696 <b>ONLY! \$18,555</b></p>	<p><b>2000 GMC 3500 DUMP BODY</b> V8, AT, AC, Complete Stahl 2 Yard 8 5' Champion Dump Body w/Pull Tarp &amp; Handle Stk# 7784 <b>\$24,899</b></p>
<p><b>2000 GMC SONOMA</b> AC tilt CC, alloy wheels, pref Super Special Package and more! Stk#7816 <b>\$11,995</b></p>	<p><b>2000 GMC SAFARI CARGO VAN</b> V6, AT, AC, PS, PB, AM/FM and more! Stk# 7616 Was \$20,879 <b>\$18,495</b></p>	<p><b>2000 GMC 1/2-TON EXT CAB 4X2 PICKUP</b> 3300 Vortec V8, AT, AC, tilt, PW PL, HD trailer pkg., 6200 GVW and more! Stk# 7507 Was \$27,761 <b>\$23,995</b></p>	<p><b>2000 GMC 2500 4X4</b> 6000 V8, AT AC 8600 lbs GVW lock rear, 4 70 rear HD suspension and more! Stk# 7667 Was \$27,738 <b>\$23,998</b></p>
<p><b>2000 GMC 3500 HD DUMPBODY</b> 6 5 Liter Turbo Diesel, AT, 15000 GVW, Hell 8'5" X7' Super Marauder Dump, Voisard ABC Tool Box and More! Stk# 7721 <b>\$32,995</b></p>	<p><b>2000 GMC STAHL USV BODY</b> 6 5 Turbo Diesel, 12000 GVW, AC, Locking Rear, Complete Stahl USV Body w/locking boxes Stk#7793 Was \$35,192 <b>\$32,995</b></p>	<p><b>SAVANA 3500 CARGO VAN</b> Ext. whl. base, 5.7 V8, AC, AT, lock, rear, HD suspension, bin pkg. installed, free to qualified buyers Stk#7822 <b>\$21,799</b></p>	<p><b>2000 GMC 1500 EXT CAB</b> Two-tone paint, 4-Dr 5300 V8 HD trail pkg., PW, PL tilt CC Stk# 7766 Was \$31,782 <b>\$26,499</b></p>
<p><b>2000 GMC SAFARI PASSENGER VAN</b> V6 PW, PL, tilt, CC, 7-pass, alloy whls, and more! Stk# 7779 Was \$27,770 <b>\$21,995</b></p>	<p><b>2000 GMC SIERRA 2500 CREW CAB</b> V8, Single Rear Whls, leather, PW, PL, custom pkg., loaded and more! Stk# 7828 <b>\$32,899</b></p>	<p><b>2000 GMC 2500</b> Complete Stahl 96VVS service body w/top packs &amp; ladder racks, 6000 V6, AT, AC Stk#7726 Was \$27,408 <b>\$21,995</b></p>	<p><b>2000 GMC 3500HD UTILITY BOX</b> 6 5 Turbo Diesel, 15,000 lbs GVW, dual whls complete Stahl 132VVD 20 gauge double panelled doors and more! Stk# 7746 Was \$37,895 <b>\$32,998</b></p>

**610-363-7790**

**Credit Problems? We Can Help!**

**GMC** "Do One Thing. Do It Well!"

421 W. Lincoln Hwy. • Exton (Rt. 30-Across from Applebee's)

HOURS: Mon. thru Thurs. 9 am-9 pm • Fri. 9 am-8 pm • Sat. 9 am-5 pm • www.coleypontiacbuick.com • E-mail: JcoleyPB@aol.com

Prices include all factory rebates to qualified buyers. Tax, tags & registration fees additional. See dealer for details. All prior sales excluded. Not responsible for errors and omissions.