

7511 Allentown Blvd.
Harrisburg, PA 17112

AFFORDABLE CARS AND TRUCKS, INC.

717-652-1925
FAX 717-652-4888
www.affordablecarandtruck.com

75 TRUCKS
IN STOCK

"You Gotta Believe!!"

Exit 27, Rt. 81; Rt. 22 East of Harrisburg; 3 Miles North of Hershey



95 Ford F250 XL
4x4, 8600 GVW,
Extra Nice Trucks,
Choose From 5-
Spd. or Automatic,
Fully Loaded, Only
78,000 Miles
\$10,995 & Up

95 DODGE 2500
4X4, H.D. Laramie
SLT, 8600 GVW,
360V8, AT, A/C, PW,
PDL, Stereo, only
80,000 Mi, Flawless
Vehicle **\$13,995**



94 Chev 1500 Silverado
4x4, Ext Longbed, All Black,
350 + Loaded, Extra Clean,
100K Mi **\$12,995**



87 Ford F250 XLT Lariat
4x4, Super Cab, Choose From 6 9
International Diesel or 5 8 Gas, 2 Available,
Fully Loaded, AT, A/C, PW T, More, Mint
Condition, 100k Mi **\$8,995 Ea.**



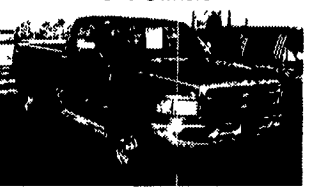
95 Chevy 1500 Silverado 4x4
Choose from 350 V8, Loaded **\$12,995**
or Economical V6, Loaded **\$8,995**
Both Super Clean, Low Miles,
One Owners!



96 Ford F250 XL 4x4 Ext
Cab, 7 3 Power Stroke w/Rare
5 Sp & Loaded, Absolutely
New Throughout, Guaranteed,
140K Mi **\$17,800 \$16,995**



91 Ford F250 XLT Lariat
4x4, 351, AT, AC & Loaded Up,
Black & Beautiful, Mint Cond.
Truck, 100K Mi. **\$8,995**



94 Dodge Ram 2500
Laramie SLT, 4x4 Cummins
Turbo Diesel, AT, A/C, PW, PL,
Loaded, Only 114K Mi All
Records, Excellent Shape
\$14,900



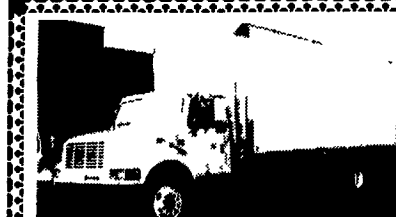
90 Chev Suburban 4x4
Barn Doors, Dual A/C, 8-Pass,
Super Nice Vehicle
All 100K Mi., 4-Avail. 88-91
\$7,500-\$10,000



**91 Ford Explorer Hi-Top
Conversion Van** V8, w/Neop
Rebuilt AT, Dual A/C, TV, VCR,
100k Mi., Very Clean & Well
Maintained Look **\$5,995**



93 CHEV 2500 H.D.
Silverado, 4x4, 350, AT, 8,600
G.V.W. A/C, Most Options, Mint
Cond. 108K Mi. **\$10,995**



1996 INTERNATIONAL 4700, DT466.
175 HP, 5 Spd., 25,500 GVW, 24 Ft Van
Body 5 Spd. or AT. **LOW MILES.**



1990 FORD LN 7000, 6 6L 185 HP
Diesel. 6-Spd, 30,000 GVW, 16' Stake
Body. 257,000 Miles



2001 ISUZU NPR, "Millennium
Edition" 175 HP Diesel, AT, Air,
Stereo, PW & PL. 14 Ft Van Body,
12,000 GVW, Limited Edition, Silver



1978 IHC 1800 Dump MV446 Gas;
5-Spd & 2-Spd Rear, 30,200 GVW. P/S.
10 00x20 on Spoke, 9' Dump Body



1997 ISUZU NPR C & C ONLY,
12,000 GVW, AT, Diesel, A/C, Stereo,
Super Low Miles. Will Take 14 ft Body



ISUZU 2000 NPR, Gas, 14,050 GVW,
250 HP, V8 Engine, Auto Trans, A/C,
AM/FM Cass., 14' Van Body **GREAT
PRICE OR LEASE!**

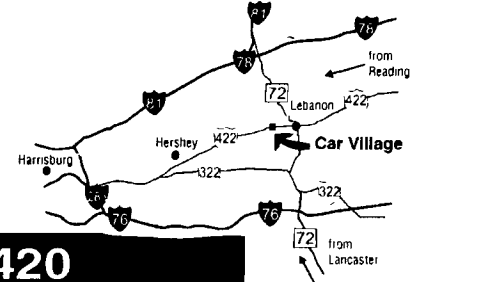
LOTS OF OTHER ISUZUS IN STOCK
WE DELIVER ANYWHERE!!!
FIVE STAR ISUZU ★★ ★★
New Toll Free - **1-877-54-ISUZU** Keith Eshelman
(47898)

Business Hours:
Mon.-Fri. 9 to 9;
Sat. 9-4

2300 W.
CUMBERLAND ST.
(Rt. 422)
LEBANON, PA 17042
(Across From
Lebanon Valley Mall)

CAR VILLAGE

HEAVY DUTY TRUCKS



PHONE 717-274-2000 Toll Free 1-800-650-1420



GOOSENECK HAULER 94 GMC HD 3500
All Set Up & Ready To Go, Gooseneck Hitch,
Heavy Duty Trailer Pkg, High Output 6 5 Turbo
Diesel, AT, A/C, Only 8,300 Miles



5 SP. CUMMINS 4 WHEEL DRIVE
98 DODGE 2500 4X4 A Real Looker, Loaded
Laramie SLT, Cummins Diesel, 5 Sp, A/C, Tilt, Cruise,
CD Player, Overhead Console, Chrome Wheels, 3.54
Limited Slip Axle, Heavy Duty 3/4 Ton



MADE TO TOW
96 FORD F350 CREW CAB DUALLY
Diamond Plate Flatbed, Both Gooseneck & Class 3
Hitch, Powerstroke Turbo Diesel, Heavy Duty 5 Sp.
Trans, A/C, Limited Slip 4.10 Gear, Only 45,000 Miles



450 SUPER DUTY 99 FORD
A Rare 4 Door With Mechanics Box, Powerstroke
Turbo Diesel, 6 Sp, A/C, Vinyl Seat & Floors, Heavy
Duty 15,000 GVW, Ready To Work



L-PAK DUMP, 95 FORD SUPER DUTY, Heavy Duty
Dump, 15,000 GVW, Powerstroke, Turbo Diesel, Auto,
4 Wheel Disc Brakes, Heavy Tow Pkg, Reading L-Pak Tool
Box, Only 47,000 Original 1 Owner Miles, A Must See!



CREW CAB DUALLY 97 FORD F350 XLT
Nice Tk, Only 45,000 Miles, Powerstroke
Turbo Diesel, AT, A/C, Power Everything, Tow Pkg,
Limited Slip Axle, Nice, Comfortable Interior,
Aluminum Wheels



QUAD CAB SHORTEED 4 WHEEL DRIVE
99 DODGE 2500 4X4 24 Valve Cummins, AT, A/C,
Power Locks, Windows, Tilt, Cruise, AM-FM CD Player,
Chrome Wheels, 2 Tone Paint, Remaining New Tk
Warranty & Check Out This Price Only \$28,900



4x4 SUPER CAB POWERSTROKES
Heavy Duty 3/4 Ton, Loaded XLTs, Tow Pkg,
Aluminum Wheels, Dual Tanks
97 - Auto, 96 - Auto, 95 - 5 Spd



PICTURE PERFECT 94 FORD F350 SUPER CAB
Dually Centurion Conversion The Nicest Looking
and Driving Truck You Can Find! Powerstroke Turbo
Diesel, H D 5 Spd, A/C, Tilt, Cruise, Gorgeous Custom
Paint, Chrome Simulators, Chrome Bumper Guard,
Tinted Glass, H D Tow Pkg, 4 10 Gears



99 FORD F250 QUAD CAB SHORTEED,
4 Wheel Drive, XL Pkg, Not Fancy Just Nice, Powerstroke
Diesel, 5 Sp Trans, A/C, Bench Seat, Tow Pkg,
Remaining New Tk Warranty, Only 26,000 Miles



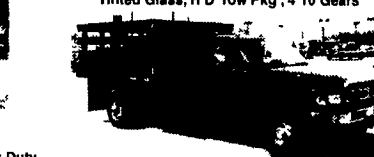
95 FORD F250 SUPER CAB, 4 WHEEL DRIVE Nice
Tk, Only 45,000 Miles, Powerstroke
Turbo Diesel, AT, A/C, Tilt, Cruise, Power Everything, Tow Pkg,
Lock Out
Hubs, Nice Truck For The Money. \$18,900



BIG BAD DODGE
97 DODGE 2500 SUPER CAB 4X4
Probably The Nicest Anywhere, Only 42,000 Miles,
Cummins Turbo Diesel, AT, A/C, Chrome Wheels,
Tow Pkg. & Lots More, Check It Out



5 SPEED POWERSTROKE 97 FORD F250, Heavy Duty
3/4 Ton Awesome Powerstroke Diesel, Heavy Duty, 5 Sp
Trans, A/C, Very Nice, Clean Tk, Only 34,000 Original Miles



4X4 FLATBED, 98 DODGE 3500
9 Foot Flatbed, Removeable Sides,
L-Pak Tool Box, Cummins Turbo Diesel, Auto,
New Tires, Put It To Work



\$18,900
5 SPEED CUMMINS 94 DODGE 2500 4X4
Great Farm Tk, Awesome Cummins Heavy Duty 3/4 Ton,
Turbo Diesel 5 Sp, A/C, Tow Pkg, Only 77,000 Miles



4 DOOR 4X4 PERFECT 97 FORD F350 XLT
The Nicest 30,000 Mile Tk Anywhere, Powerstroke Turbo
Diesel, AT, A/C, Tilt, Cruise, Power Everything, Tow Pkg,
Aluminum Wheels, A Must See & Drive



V8 5 SP. 92 FORD F250 4X4
Heavy Duty 3/4 Ton 351 Fuel Inj, V8, A/C, Tilt, Cruise,
Cloth Bench Seat, Vinyl Floor, Great Farm Truck



14 FOOT CUBE VAN 95 FORD E-350
Very Clean & Ready To Work For You,
Powerstroke Turbo Diesel, AT, A/C,
Roll Up Rear Door. \$13,900



5 SP POWERSTROKE 4 WHEEL DRIVE,
95 FORD F250 XLT
A Nice One, Only 59,000 Clean Miles, Powerstroke Turbo
Diesel 5 Sp, A/C, Tilt, Cruise, 40/20/40 Seat, Limited Slip
Gear



QUAD CAB UTILITY TRUCK 98 DODGE 3500
Very Rare Truck Indeed, Room for Workers, Room For
Tools, Only 16,000 Miles, Like Brand New, Auto, A/C



2 WHEEL DRIVE 95 FORD F250 SUPER CAB
5 Sp Trans, Powerstroke Turbo Diesel, Tilt, Cruise,
4 10 Gear, Excellent Tow Machine, Real Clean &
Runs Great



1 TON POWERSTROKES 4X4 FORD F350'S
Solid Front Axle, 97 Auto - XLT, 96 Auto - XL, 94 Auto -
XLT, Remainder New Tk Warranty



5 SP CUMMINS 4 WHEEL DRIVE, 98 DODGE
2500 LARAMIE SLT Very Clean, Very Nice, Cummins
Turbo Diesel, 5 Sp, A/C, Tow Pkg, Limited Slip Dana
Axles, Only 59,000 Miles



4x4 MECHANICS TRUCK 97 FORD F350 XL
Powerstroke Turbo Diesel, Only 39,000 Clean Miles,
Stahl Body, Ladder Racks, Tow Pkg, Put It To Work



4x4 CUMMINS DIESEL 97 DODGE 2500
Heavy Duty 3/4 Ton Awesome, Impressive Cummins
Diesel, AT, A/C, Power Everything, Chrome Wheels,
Tow Pkg, 4 10 Limited Slip Gear, A Must See