

1962 Mack Thermodyne dsl 6-wheeler w/18' Mid-west grain body & twin cyl. Harsh hoist, all good condition, \$5000. 302/398-8754.

1997 green Chevy Tahoe, 4WD, 4-dr, fully loaded, like new, 42,000 mi, \$23,900/obo 610-269-7900.

1987 DM Mack C&C long wheel base, 285 eng., 6 spd., 44 rears. 1-800-839-3338.

1987 Volvo White tractor, single axle or with tag axle, conventional, 320 Detroit, good cond. \$4800. 717-776-7725

**East Coast Trailers**  
Honesdale, PA • 570-729-8870



28' 20,000 lb. gooseneck.....\$5,650  
24' 14,000 lb. gooseneck.....\$3,595

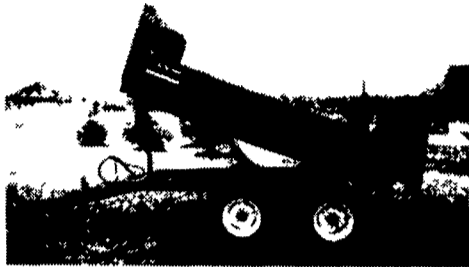
Other Models & Sizes in Stock

**FARM DUMP TRAILERS**

(Direct from the Manufacturer)

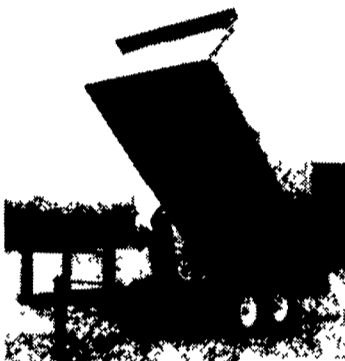
**6-Ton Dump Trailer**

- 10 ft. x 7 ft.
- Floating Tandem Axle
- 3 ft. Front, 3 ft. Tailgate & Grain Chute
- 16 in. Extendable Sides
- 10 ga. Floor & Sides
- 11Lx15 Flotation Tires
- 2-Way 4 in. x 24 in. Hydraulic Cylinder includes hoses



**7-Ton Road Dump Trailer**

- Fifth wheel or bumper type
- 16 ft. x 8 ft. deck 3 ft. front rack and pockets side & back
- D.C. hydraulic pump & battery mounted in locking tool box.
- 12 ton drop leg jack
- 10 ga. floor
- 6x3x3/16 tube main frame
- Sealed beam lighting
- 7000 lbs. per axle rating
- Electric brakes on both axle
- 16" tires on white spoked rims
- \$6400 U.S. delivered in Northeast U.S.A



**BERKELMAN'S WELDING**

RR 7, AYLMEER, ONTARIO, CANADA N5H 2R6  
(519) 765-4230



**1983 FORD F600**

19 ft. Alum. Chevron Rollback  
With Hyd. Lift 165 HP 4 Speed, 2 Speed Axle,  
23,000 GVW, PS, PB

Call 1-800-382-7700

**Well Maintained**



**1992 Diamond Reo Tri-Axle**

400 Cummins, 8LL Trans, 18# FA 44# Rears, A/C,  
16 ft. Alum. with Steel Floor, 276,000 Orig. Miles,  
Currently Only 2nd Owner

Asking \$45,000 - Pager (717) 751-1594



**1999 DODGE 15 PASS.**, 360 Auto, PS, PB, PW, PM, PDL, Cruise, Tilt, Dual Air, AM/FM/CASS, Michelin Tires, 16,000 Mi. with Bal. of Factory Warranty, Black ..... \$20,500



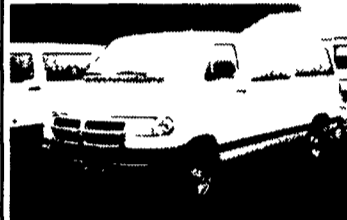
**1999 DODGE 15 PASS.**, 360 Auto, PS, PB, PW, PDL, Cruise, Tilt, Dual Air, AM/FM/CASS, 25,000 Mi. with Bal. of Factory Warranty, Dark Green..... \$19,900



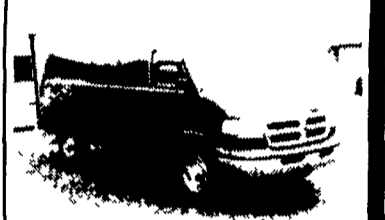
**1997 DODGE SLT 3500**, 15 Pass., 360, Auto, PS, PB, PW, PDL, Cruise, Tilt, Dual Air, AM/FM/ CASS, 39,000 Mi. with Transferable 100,000 Mi Warranty, Dark Green.. \$17,500



**1999 FORD XLT E150 CLUB WAGON**, 4.6 V8, Auto, PS, PB, PW, PDL, Cruise, Tilt, Dual Air, AM/FM/ CASS, 13,000 Mi. w/Bal. of Factory Warranty, Dark Blue..... \$19,500



**1999 DODGE 2500**, 12 Pass., 318 Auto, PS, PB, PW, PDL, Cruise, Tilt, Dual Air, AM/FM/CASS, 24,000 Mi. with Bal. of Factory Warranty, White..... \$18,500



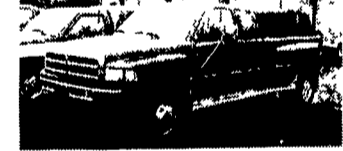
**1999 DODGE 2500**, 8 Pass., 318 Auto, PS, PB, PW, PDL, Cruise, Tilt, Dual Air, AM/FM/CASS, 19,000 Mi., with Bal. of Factory Warranty, Dark Green.. \$17,900

**A&J AUTO SALES**

798 E. Main St., Rt. 322 East, Ephrata, PA 17522 • 717-733-2873



**99 FORD F350 CREW CAB 4X4**  
Power Stroke Diesel XLT AT A/C Most Options Alloy Wheels, Maroon & Silver 23,000 Miles #F949



**96 DODGE RAM 3500 CLUB CAB 4x4**, Dually, Cummins Turbo Diesel, 5-Spd., Laramie SLT, A/C, Most Options, Green, Hi-Miles - Looks and Runs Good #D316



**98 DODGE RAM 2500 CLUB CAB 4x4**  
Cummins Turbo Diesel, AT Laramie SLT, A/C Most Options, White, 54,000 Miles #D315



**96 CHEV. 2500 EXT. CAB 4X4**  
6.5 Turbo Diesel, 5-Spd., A/C, AT, AM/FM, 67,000 Miles, Blue #C555



**95 DODGE RAM 3500 DUALLY**  
Reg Cali Cummins Turbo Diesel, AT, A/C, Laramie SLT Most Options, 126,000 Miles Blue & White #D311



**96 DODGE RAM 2500 4X4**  
ST Trm. Cummins Turbo Diesel 5 Spd A/C Cass., 67,000 Miles, Black #D305



Preferred Warranties Available on Most Trucks

**Bobby Gerhart's**

**Truck World**

Mon. - Fri. 9-8, Sat. 9-3

2400 E. Cumberland St. Rt. 422 Lebanon, PA 17042 717-273-7995



**95 DODGE RAM 2500 4X4 H.D.**  
Cummins Turbo Diesel, AT, AM/FM/Cass., PS, PB Dk Green, 69,000 Miles #D291



**97 DODGE RAM 3500 CLUB CAB DUALLY 4x4**  
Cummins Turbo Diesel, Laramie SLT, AT A/C, Most Options, Power Seat, White, 56,500 Miles #D309



**97 FORD F250 SUPER CAB**  
4x4 Power Stroke Diesel XLT AT A/C Most Options Tow Pkg Alloy Wheels Gold Frost 37,000 Miles #F947



**97 FORD F250 SUPER CAB 4X4**  
Powerstroke Diesel, 5 Speed, XLT Pkg, Alloy Wheels 32,000 Miles White w/Grey Int #F913



**2000 Ford F350 H.D. CREW CAB DUALLY 4X4**  
Lariat, 5-Spd., Triton V10, Most Options, CD Player, Bright Red w/Leather, 4,000 Miles F948  
Call For More Info.



**99 Ford F250 Quad Cab 4x4**  
Triton V10 XLT AT A/C Most Options 15,300 Miles Silver #F945



**96 FORD F350 CREW CAB 4X4**  
7.3 Power Stroke Diesel XLT AT A/C Most Options Tool Boxes 128,000 Miles Looks & Runs Good, White #F943



**98 CHEV. K2500 EXT. CAB 4X4**  
6.5 Turbo Diesel Short Bed, AT A/C PS PB Cheyenne Pkg White - 2 To Choose From -



**96 FORD F250 XL, Trm 4x4**, Powerstroke, Diesel, 5 Sp., A/C, AM/FM Cass, Dual Tanks, 83,000 mi., Red. #F909



**95 FORD F350 SUPER CAB DUALLY**  
AT, 460 EFI, XLT, A/C, Most Options, 57,000 Miles, Dk Green #D871



**89 FORD F800 HOT SHOT HAULER**  
w/93 Pace American 38 ft. Trailer with Lots of Extras 250 Diesel Only 89,000 Miles



**96 FORD F250 SUPER CAB**  
HD 4x4 AT A/C 351V8 44,000 Miles Dk Green w/Silver Sport Tape #F812



**96 CHEV 2500 H.D. EXT. CAB**  
4x4 6.5 Turbo Diesel Silverado AT, A/C, Most Options, Black w/Leather 96,000 Miles #C575



**96 DODGE RAM 2500 CLUB CAB 4X4**  
Cummins Turbo Diesel AT A/C Laramie SLT Most Options 87,000 Miles White #D310



**95 FORD F250 SUPER CAB 4X4**, Power Stroke Diesel, XLT AT A/C, Most Options 73,000 Miles, Black & Silver, #F886



**88 FORD F350 CREW CAB DUALLY**  
Jasper 460 V8 XLT AT A/C Most Options OD Unit Ready To Tow Red & Black 95,000 Miles #F930



**97 DODGE RAM 2500 CLUB CAB 4X4**  
Cummins Turbo Diesel, AT A/C, Cass., Red & Silver, 44,000 Miles. #D306



**90 FORD F350 SUPER CAB DUALLY**  
7.3 Diesel, AT-OD, A/C XLT Lariat, Most Options, 132,000 Miles, Maroon, Looks & Runs Good #F928



**95 CHEV. KODIAK DUMP**  
366, 4 Spd Allison Trans AT PS PB 25,950 GVW Good Tires and Inspected Ex. Cond. Ready To Work 2 To Choose From



**87 FORD F350 CHEVRON ROLL-BACK**  
460 EFI 5 Spd A/C C 83,000 Miles Gold Ver. Good Condition #F950