

'91 Chevy Silverado 2500, 4x4 Suburban, 350 auto, PS, PB, PW, PDL, cruise, tilt, air, AM-FM cassette, towing package, 79,000 one owner miles, excellent condition, \$10,900. 717-733-2873

93 Chevy HD 3500 Dump, New 6.5 Dsl, \$15,000/obo 410-557-9559

'94 Isuzu short bed pickup, 2.3, 4 cylinder, 5 spd, new radials, 58,000 miles, red, \$3,975. 717-733-2873

STOCK GOOSENECK 16x6x6", STOCK BUMPER 16x6x6" 3 HORSE SLANT OPEN STOCK w/ dressing rm & rear tack. Used 2 horse 1986, call for pricing. New & Used trailers available. NETCO Trailer Sales, 410-838-1282.

CASH FOR USED DIESEL TRUCKS!

WE NEED 1/2 TON TO ONE TON:

- FORD DIESELS
- SUPERCABS
- CREW CABS
- DODGE CUMMINS
- 2WD OR 4X4
- DUALIES
- DUMPS
- UTILITY BODY
- FLAT BEDS
- CAB & CHASSIS
- SUPER DUTIES

LOW MILEAGE ONLY PLEASE

Before you sell or trade your diesel in somewhere else for LESS.

CALL US!

We Pay More for Used Diesel Trucks Than Anyone. 800-363-2767 TRY US!

OR 610-678-3243

Ask for Smokey or Kay



RD 7, Box 405 Lebanon, PA 17042

Woodcrest Motors

SPECIALIZING IN TRUCKS & VANS
1200 North Reading Rd., (Rt. 272) Stevens, (Lancaster Co.) PA 17578
717-336-3130



88 FORD F150 Super Cab, 3-Door, 2WD, 4.2 V6, AT, A/C, T. C., Cass, Black, 65,000 Miles, \$13,900



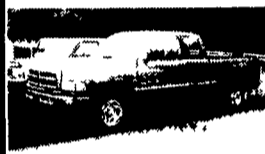
92 CHEVY 1500 Ext. Cab, Silverado, 4x4, 5.7 V8, 5-Spd, A/C, Most Options, 82,000 Miles \$10,995



95 CHEV. 2500 CHEYENNE 4x4, 5.7 V8, AT, A/C, White, 87,000 Miles \$12,900



96 CHEV 1500 SILVERADO EXT. CAB 4x4 V8, AT, A/C, Most Options, Teal, 90,000 Miles \$14,900



96 DODGE RAM 1500 2WD, Club Cab, V8, AT, Most Options, 86,000 Miles, Red \$11,995



97 DODGE RAM 2500 CLUB CAB 4X4, V8, A/C, SLT, Most Options, Black & Silver, 72,000 Miles \$16,995

'79 R700 Mack 12 Speed, 20,000 FT With Flotation 44 Rears, 1020 Tires, Good With 22 Ft. Ledwell Spreader Body, 30' Chain, New.
\$11,900 OBO
570-922-4385 or 570-922-4950

- 96 DODGE RAM 1500 V8 Magnum, 102k Mi. (White)....\$7,850
- 94 CHEVY 2500 CHEYENNE 305 Eng, 112k Mi.....\$6,600
- 94 FORD F-150 XL 6 Cyl., 88k Mi.....\$6,250

All trucks have long beds, auto trans., A/C, PB, PS, AM/FM stereo, exc. cond.

856-769-3183
Located in South Jersey

TOOL SHED OF AMERICA SAND BLASTERS & BLAST CABINETS

4294 E. HARRISBURG PIKE DEPARTMENT LF CATALOG MIDDLETOWN, PA 17057 (717) 944-0318 Route 230 Between Elizabethtown & Middletown

NEW GAS TANKS SAVE \$\$\$

NEW RADIATORS

TOOLS AND EQUIPMENT

FREE CATALOG CALL OR WRITE NOW!!

AUTOBODY PARTS, PAINTS & SUPPLIES

BUILD OR REPAIR YOUR TRAILER. WE HAVE PARTS.

MOST CLASS III HITCHES \$79⁹⁹ to \$89⁹⁹

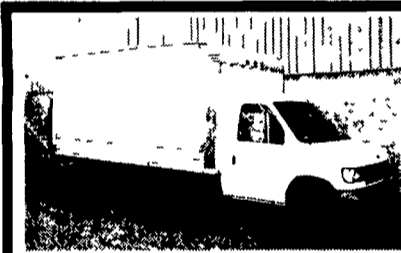
USED 4x4's Pickup's, Bronco's & Blazer - Call For Our Low Prices

NEW UTILITY TRAILERS 3,000 GVW, Extra Heavy Frames w/Treated Lumber Deck, Lights, Chains, Etc Included!!!
5'x10' Deck.....\$775
6'4"x12' Deck.....\$899
Add-On Landscape Ramp/Gate.....\$145

WE BUILD OUR OWN TRAILERS

"NEW" 16' Deck Car Hauler Has Two 24" Wide Diamond Steel Runners Tube Steel Frame 4 Wheel Brakes Safety Breakaway Kit & Full Lighting Beavertail & Ramps, Removable Left Fender & More For \$1,799

Hours: Tues.-Fri. 9 AM - 6 PM Saturday 9 AM - 2 PM Closed: Sunday & Monday



1997 FORD E350 HI CUBE, 6 8 Triton V10 Auto O/D, A/C, PS, PB 14' Supreme Body, Maxxon Lift Gate, White, 51,000 Miles



1998 GREAT DANE REEFER, 48' x 102", Air Ride Slider, Stainless Front and Rear, 11R24 5 Virgin Tires, Carrier Ultra Fresh 2 Extra w/2600 Hrs, Adjustable Dual Temperature Dividers, Bulk Head, 50 Gal Aluminum Fuel Tank, New Brakes, Like New!



1999 FORD E350 ECONOLINE, 7.3 Powerstroke DSL, Auto O/D, 9500 GVWR, Side and Rear Glass PS, PB, A/C, 4.10 Limited Slip Rear, Step Bumper, White, 10,000 Original Miles



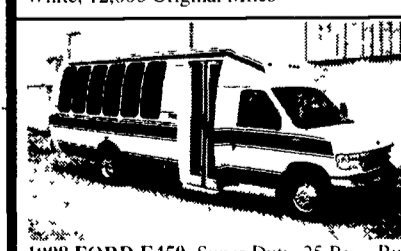
1997 CHEVROLET G3500 HI CUBE, 5.7 V8, Auto O/D, PS, PB, A/C, 14' Supreme Body, White, 57,000 Miles



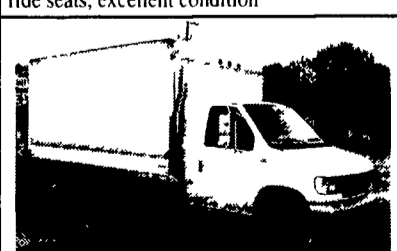
1997 CHEVROLET P30 18' STEP VAN, 6.5 Diesel, Auto OD, Double Sliding Door, White, 12,000 Original Miles



96 FREIGHTLINER FL70, Expediter Truck, 8.3 Cummins 225 HP, 6 Sp, 33,000 GVWR, air ride, (4) aluminum wheels w/72" Bentz high rise sleeper, 22'x102" Morgan dry van, E-Tracking, 293" wheel base, air ride seats, excellent condition



1998 FORD F450, Super Duty 25 Pass Bus (Metrotrans) 7.3 Powerstroke Dsl Auto O/D Front and Rear A/C Power Doors Tilt Cruise Cassette High Level Interior Blue/White Excellent Condition



1997 FORD E350 CUTAWAY HI CUBE, 6.8 Triton V10 AC PS PB 11,000 GVWR 14 Supreme Body w/Lift Gate 51,000 Miles, #3421

30/Four Way Auto Sales
770 W. Main New Holland, PA 17557
717-354-3199 • Fax 717-355-0625
Toll Free 1-877-999-8267

CHEVROLET GMC

Sutliff

GM PARTS
GENUINE GM PARTS FOR ALL GM VEHICLES
800-932-0284

Free Delivery Routes In 12 Counties In Central PA
Call For Specifics

25 PARTS PROFESSIONALS TO SERVE YOU
ENGINES - TRANSMISSIONS
A.C. DELCO - SHEET METAL
ALL IN STOCK AND PRICED RIGHT
IF YOU NEED GM PARTS
WE'VE GOT WHAT YOU NEED

SUTLIFF GM PARTS
13th & Paxton
Harrisburg, PA

GM Parts
We Want Your Business

A GM Goodwrench Service Plus Dealer

The Plus means better.

CHEVY TRUCK

OLDS
BUICK
CADILLAC
PONTIAC