

**PRODUCE ♦ MARKETS**

**Phila. Fruit**

PHILADELPHIA Terminal  
Prices as of 22-JUN-2000

Report Supplied By USDA

Provided by: Fruit and Vegetable  
Market News, Federal-State Market  
News Service, USDA.

Phone: (215) 597-4536 Fax: (215) 336-0355

Cloudy 71-81  
NA—FV010

**CITRUS FRUITS**

**GRAPEFRUIT:** MARKET STEADY 4/5 buctns FL U.S. One Indian River Red 23s few 10.50-11.00 27s 10.00 few 10.50-11.00 32s few 10.50-11.00 40s 10.00 —**LEMONS:** MARKET STEADY ctns CA Shprs 1st Grade 140s 24.00 165s 26.00 Shprs Choice 115s 15.00-17.00 mostly 15.00-16.50 140s 17.00-19.00 mostly 18.00-19.00 165s 18.50-20.00 15 kg cntrs SP 160s 14.50-15.00 —**LIMES:** MARKET STEADY 10 lb ctns FL 48s 4.50-5.00 54s 4.50-5.00 MX 48s 3.50-4.50 54s 3.50-4.50 40 lb ctns MX 150s 10.00-12.50 mostly 10.00 some 8.00 175s 8.00-10.00 mostly 10.00 200s 8.00-10.00 —**MISC CITRUS:** TOO FEW SALES TO QUOTE —**ORANGES:** MARKET STEADY ctns CA Shprs 1st Grade Navel 56s 18.00 72s 18.00 88s 18.00 Valencia 56s 13.00-14.50 72s few 12.00 88s 12.00-13.00 113s 11.50 Shprs Choice Valencia 56s 10.00 72s 10.00 88s 10.00-10.50 113s 10.00 4/5 buctns FL Valencia 80s 9.50 —**TANGELOS:** OFFERINGS NONE —**TANGERINES:** OFFERINGS LIGHT 4/5 buctns FL Honey 64s 18.00-19.00 100s 18.00-19.00 120s 17.00-18.00 150s 16.00 —**TEMPLES:** OFFERINGS NONE

**BERRIES** —**BLUEBERRIES:** MARKET LOWER flts 12 1-pt cups with lids NJ lge 15.00 med-lge 13.00-15.00 mostly 13.00 some 12.00 —**CRANBERRIES:** OFFERINGS NONE —**MISC BERRIES:** flts 12 6-oz cups with lids CA Blackberries 18.00 ord cond 8.00-10.00 —**RASPBERRIES:** OFFER-

INGS INSUFFICIENT TO QUOTE —**STRAWBERRIES:** MARKET SLIGHTLY HIGHER flts 12 1-pt bkts CA med-lge 12.00-14.00 mostly 13.00 few 11.00 preferred labels 15.00-16.00

**MELONS** —**CANTALOUPS:** MARKET HIGHER 1/2 ctns/crts CA 12s 11.00-12.00 ord cond 5.00-7.00 15s 12.00 ord cond 5.00-7.00 24 inch bins GA 120s fr cond 50.00-60.00 150s fr cond 20.00

—**HONEYDEWS:** MARKET HIGHER 1/2 ctns CA 5s 9.00 6s 9.00 —**MISC MELONS:** 1/2 ctns CA Crenshaw 5s 11.00 Juan Canary 5s 11.00 Sharlyn 5s 11.00 Orange Flesh 5s 11.00

—**WATERMELONS:** MARKET ABOUT STEADY ctns per ctn GA Sangria 3s 14.00 4s 14.00 Red Seedless 4s 18.00 bins GA Red Seedless 200.00 (36 inch bin 50 count) 185.00 (36 inch bin 55 count) per melon GA Sangria 18-20 lb 2.50-2.75 20-24 lb 2.00-3.00 25-28 lb 2.50-3.50 mostly 3.00 28-30 lb 3.50-4.00 30-32 lb 4.00-4.50

**NON-CITRUS FRUITS** —**APPLES:** MARKET ABOUT STEADY CONTROLLED ATMOSPHERE STORAGE ctns trypk NY U.S. ExFcy Red Rome 72s 16.00 88s 16.00 WA WAExFcy Red Delicious 72s fr cond 12.50 80s 15.00 fr cond 12.50 88s 15.00-16.00 fr cond 12.50 100s 15.00-16.00 fr cond 12.50 113s 15.00-16.00 fr cond 12.50 125s 15.00 Granny Smith 88s one label 28.00 100s 24.00 U.S. ExFcy Golden Delicious 100s 17.00 113s 16.00 WAFcy Fuji 64s fr cond 7.00 U.S. Fcy Golden Delicious 80s 13.00 88s 13.00 100s 13.00 ctns celpk NY U.S. ExFcy McIntosh 100s 18.00 120s 16.00 WA WAExFcy Golden Delicious 80s 24.00 —**APRICOTS:** 24 lb ctns lse CA California Utility Patterson 7 fr cond 7.00-8.00 8 fr cond 7.00-8.00 10 fr cond 7.00-8.00

—**AVOCADOS:** MARKET HIGHER ctns 2 lyr CA Hass 48s 40.00 fr cond 34.00 —**BANANAS:** MARKET STEADY 40 lb ctns IMPORT 10.50 fair qual 8.50-10.00 few 8.00 sml 7.00-8.00 mos 8.00 petite 13.00 40 lb ctns bagged IMPORT 10.50 —**CHERRIES:** MARKET ABOUT STEADY 18 lb ctns

CA U.S. One Bing 10 1/2 row sz & lgr 40.00 12 row sz & lgr 30.00 20 lb ctns WA WAOne Bing 9 1/2 row sz 37.00-39.00 10 1/2 row sz & lgr 40.00 11 row sz & lgr 30.00-35.00 12 row sz & lgr 26.00 —**FRUITS OTHER:** ctns/lugs 2 lyr trypk CA Plumcots 96S fr cond 5.00 flts 1 lyr CA Figs Brown Turkey 24s 10.00-11.00 30s 10.00-11.00 35s 10.00-11.00 48s 10.00-11.00 ctns 12 1-pt bkts CA Figs Black Mission 16.00-18.00 mostly 16.00

—**GRAPES:** MARKET ABOUT STEADY 18 lb lugs bgd AZ Flame Seedless lge 16.00 med-lge 12.00-13.00 mostly 12.00 CA Perlette med 8.00-10.00 Thompson Seedless lge 19.00 ord cond 6.00-8.00 med-lge ord cond 6.00-8.00 Flame Seedless lge 18.00-19.00 med-lge 13.00-14.00 med 12.00 White Seedless Type lge 22.00 med-lge 13.00-14.00 Black Seedless lge 20.00 MX Perlette med-lge 12.00-14.00 med 8.00-10.00 Flame Seedless lge 20.00 med 12.00-14.00 mostly 14.00 White Seedless Type lge 20.00-22.00 med-lge 13.00-16.00 mostly 14.00 fr cond 9.00-10.00 med 10.00-11.00 mostly 10.00 sml 8.00-10.00 Black Seedless med-lge 18.00 —**KIWIFRUIT:** flts 1 lyr NZ Yellow Flesh 33s 10.00 —**MANGOES:** MARKET ABOUT STEADY ctns 1 lyr MX Ataulfo 18s 7.00-7.50 20s 6.50-7.00 PR Tommy Atkins 7s 4.50 8s 4.50 9s 4.50 10s 4.00 12s 4.00 —**NECTARINES:** MARKET ABOUT STEADY ctns 2 lyr trypk CA California Utility Various White Flesh Varieties 56s 17.00 25 lb ctns lse CA California Well Matured Various Yellow Flesh Varieties 72 sz 11.50 Spring Diamond 64 sz 16.00-18.00 72 sz 12.00-14.00 Spring Bright 56 sz 19.00 60 sz 16.00-17.00 64 sz 13.00-14.00 70 sz 11.00-12.00 72 sz 13.00 80 sz 10.00

11.00 California Utility Various White Flesh Varieties 64 sz 13.00 —**PAPAYA:** 10 lb ctns BZ Red Flesh 9s 9.00-10.00 10s 9.00-10.00 HI AIR Red Flesh 10s 13.00 —**PEACHES:** MARKET STEADY ctns 2 lyr trypk CA California Well Matured Various Yellow Flesh Varieties 48s 13.00-14.00 Rich Lady 42s 13.00 48s 16.00-18.00 Fancy Lady 48s 17.00-18.00 1/2 buctns GA No Grade Marks Various Yellow Flesh Varieties 2 1/2 up 15.00 Harvester 2 1/4 up 9.00-10.00 SC No Grade Marks Garnet Beauty 2 1/4 up 9.00-10.00 June Prince 2 1/2 min 14.50-16.00 2 1/4 min 10.00-11.00 25 lb ctns CA California Well Matured Rich Lady 56 sz 16.00 Fancy Lady 56 sz 16.00 Various White Flesh Varieties 80 sz 9.00 —**PEARS:** MARKET STEADY CONTROLLED ATMOSPHERE STORAGE std ctns wrpd OR U.S. One D'Anjou 90s 18.00 100s 16.50 ORFcy D'Anjou 100s 14.00 120s 14.00 135s 14.00 —**PERSIMMONS:** TOO FEW SALES TO QUOTE —**PINEAPPLES:** MARKET STEADY ctns 1 lyr HI AIR 6s 12.50-13.00 ctns 2 lyr HD 10s 12.00-13.00 12s 12.00-13.00 14s 9.00-11.00 —**PLANTAINS:** MARKET STEADY 40 lb ctns CB Yellow 11.00 few 12.00 EC Green 10.00 —**PLUMS:** MARKET

ABOUT STEADY 28 lb ctns lse CA California Well Matured Black Amber 35 sz 34.00 50 sz 32.00 Black Beaut 60-65 sz 32.00 Santa Rosa 45 sz 26.00-28.00 California Utility Showtime 40 sz 17.00 —**POMEGRANATES:** OFFERINGS NONE —**PRUNES:** OFFERINGS NONE.

**Shippensburg Produce Auction**  
Shippensburg, Pa  
Report Supplied by Auction  
June 20, 2000  
BEANS: STRING 14.00-18.00 1/2 BU.  
CHERRIES: SWEET 12.00-35.00 8 QT. FLAT.  
ONIONS: SPRING .35-.65 BUNCH.  
PEAS: SUGAR 8.00-18.00 8 QT. FLAT; SNAP 8.00-16.00 8 QT. FLAT; HULL 12.00-18.00 1/2 BU.  
POTATOES: 8.00-12.00 1/2 BU., UNLCASSIFIED 2.00-7.50 50 LBS.  
RED BEETS; 8.00-12.00 1 1-9 BUNCH.  
STRAWBERRIES: 18.00-24.00 8 QT. FLAT.  
TOMATOES: HOTHOUSE 7.00-14.00 10 LB. FLAT, RED 7.00-21.00, YELLOW 18.00-25.00, BOTH 25 LBS.



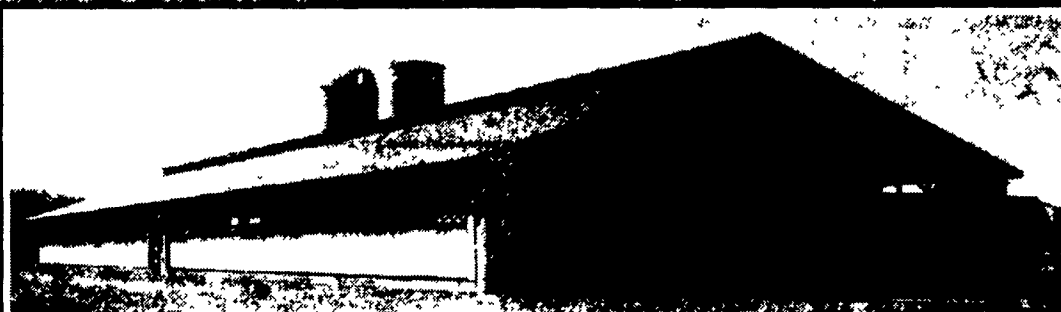
**HAY, STRAW, PEANUT HULLS**  
At farm or delivered in any quantity as you require.  
**Esbenshade Turkey Farm**  
(America's oldest Since 1858)  
Paradise, Pa.  
(717) 687-7631

**POCONO OLD-TYME FARM EQUIPMENT ASSOCIATION**  
*Presents 5th Annual*  
**ANTIQUÉ TRACTOR, GAS ENGINE & FARM EQUIPMENT SHOW**  
WEST END FAIRGROUNDS, ROUTE 208 \* GILBERT, PA  
**FRIDAY, JULY 7, Noon - Dusk**  
4 p m - Antique Tractor Parade  
5 p m - Threshing Demonstrations  
6 p m - 4x4 Truck Pull - Grandstand Admission Fee Required (Registration 3-5 30 p m)  
6 30 p m - Old Tyme Cake Walk  
7 30 - 10 30 p m - "Twitty Fever"  
**SATURDAY, JULY 8, 9 a.m. - Dusk**  
11 a m - Threshing Demonstration  
1 p m - Antique Tractor Parade  
2 p m - Kid's Pedal Tractor Pull (Registration 1-2 p m)  
4 p m - Kid's Treasure Hunt  
5 p m Adult Pedal Tractor Pull  
6 p m - Antique Tractor Pull (Registration 3-5 30 p m)  
**SUNDAY, JULY 9, 9 a.m. - Dusk**  
Antique Car Show  
10-10 30 a m - Open Air Church Service  
11 a m - Adult Pedal Tractor Pull  
12 Noon - Antique Tractor Parade  
12 30 p m - Kid's Treasure Hunt  
1 p m - Tractor Driving Skill Competition (in Grandstand Area)  
Slow Race, Barrel Rolling, Crank Up Egg Drop & Double Tree Pull  
2 p m - Kid's Pedal Tractor Pull (Registration 1-2 p m)  
4 p m - Raffle Ticket Drawing  
**FARM TOY DISPLAYS \* FLEA MARKET & CRAFT SHOW**  
**PUMPS \* FEED GRINDERS \* HIT & MISS GAS ENGINES & EQUIPMENT \* GOOD FOOD \* HAY RIDES \* SQUARE DANCERS \* BLACKSMITH \* INGERSOLL-RAND DIESEL DISPLAY \* JOHN DEERE EQUIPMENT \* FREE ENTERTAINMENT (Bring your lawn chairs)**  
ADMISSION \$2 PER PERSON (12 years old & under FREE)  
**CALL 570-402-7333 OR 570-992-7328**



477 East Farmersville Rd.  
New Holland, PA 17557

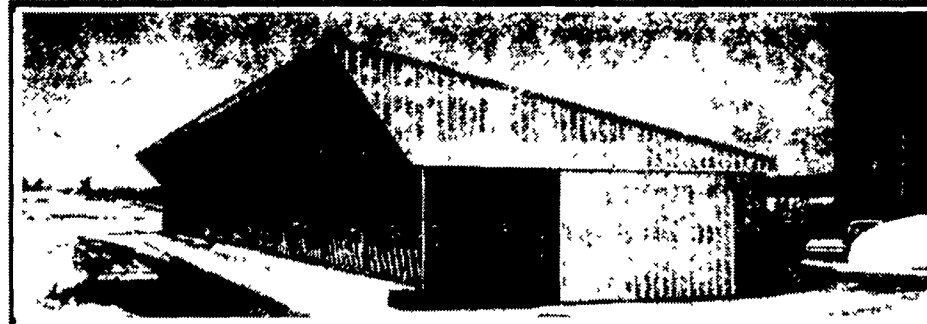
**(717) 355-2361**



**Concrete Slatted Free Stall Barn**



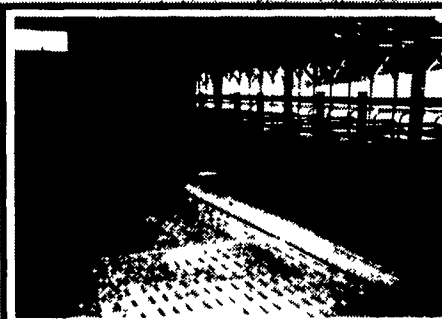
**Slatted Beef Barn**



**Slatted Heifer Barn**



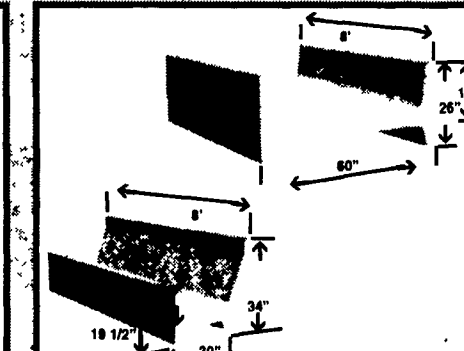
**Precast T-Wall Concrete Bunker Silos or commodity buildings built to suit your needs. Bunkers available in 8 Ft. or 12 Ft. High.**



**Slatted Free Stall Barn**



**Round Concrete Watering Troughs, SCS Approved**



**Concrete Feed Bunks**