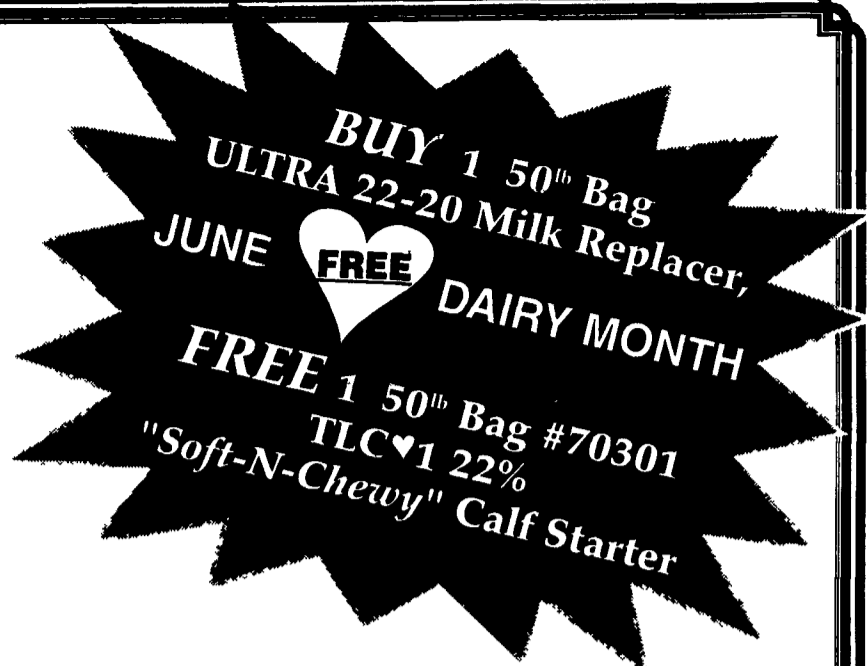


PENNFIELD'S BEST START DAIRY CALF/HEIFER PROGRAM



Lbs. Fed	Product Fed	Cost/Unit	Bag or Bulk	Total Cost
BUY 1 → 50 lbs.	#10600 Ultra 22-20 Milk Replacer 200/400NT	\$ 43.16 ¹	Bag	\$ 43.16
GET 1 FREE → 50 lbs.	#70301 TLC♥1 22% "Soft-N-Chewy" Starter-Bov	\$ 8.41 ¹	Bag	\$ 8.41
750 lbs.	#70312 TLC♥2 18% Calf Starter/Grower-Bov	\$ 244.80 ²	Bulk	\$ 91.80
550 lbs.	#54500 Dairy 35% Calf Developer-Bov	\$ 345.22 ²	Bulk	\$ 94.94
Total Cost - Purchased Feed				\$238.31

(See Feed Tag for Feeding Directions of Medicated Feeds)



2 Tons Hay	\$ 130.00 / Ton	\$ 260.00
9.5 Tons Corn Silage	\$ 30.00 / Ton	\$ 285.00
Total Cost - Forage		\$ 545.00
Total Cost - Feed & Forage		\$783.31

Prices are for Week of June 5, 2000

¹ Includes 4% Cash Disc Paid in 10 days ² Includes Early Order/Mid Week and 4% Cash Disc

FREE GOODS PROMOTION END JUNE 30, 2000

HEIFER PROGRAM

Target 24 mo. Age at calving**

Age - Month	Pennfield Feed	Lbs./Day	Hay equiv. Lbs./Day	Corn Silage Lbs./Day
Birth	#10600 Ultra 22-20 Milk Replacer 200/400NT	4 Quarts		
NEW → to 2 mo.	#70301 TLC♥1 22% "Soft-N-Chewy" Starter - Bov	Free Choice	0	0
2 - 3	#70312 TLC♥2 18% Calf Starter/Grower - Bov	3 - 5 lbs.	2 - 5 lbs.	0
4 - 7	#70312 TLC♥2 18% Calf Starter/Grower - Bov	4 - 5 lbs.	5 - 7 lbs.	0 - 10 lbs.
8 - 13	#54500 Dairy 35% Calf Developer - Bovatec	1-1.3 lbs.	5 - 7 lbs.	20 - 30 lbs.
14 - 18	#54500 Dairy 35% Calf Developer - Bovatec	1-1.3 lbs.	5 - 10 lbs.	30 - 40 lbs.
19 - 24	#54500 Dairy 35% Calf Developer - Bovatec	1-1.3 lbs.	5 - 10 lbs.	40 - 50 lbs.

** NOTE: Performance and feed usage figures above are estimates. Forage quality and animal management will affect actual farm results. Balance Rations using Pennfield CTR Heifer balancer.

SUMMERTIME TIP: Calves will eat more Starter at night when it is cooler – so for better Starter intake, put fresh Starter & water out every evening.

PENNFIELD CUSTOMER SERVICE DEPT. - OPEN 24 HOURS A DAY

ORDERS: 800-995-0333

Quality - Service - Value

www.dairyfeed.com

