

BIRCHWOOD AUTO SALES
717/949-6513

2000 FORD EXCURSION XLT,
Power Stroke Dsl., 4WD, AT, A/C, P/W, P/L,
Mirrors, Tilt, Cruise, Cass. & CD, White, 160 Miles.
Window sticker \$43,600
OUR PRICE \$39,900

- 1994 GMC 1500 SL, 4 3 V6, AT, 4x4, Bedliner, Delays, Red, 61,000 Miles \$8,900
- 1993 DODGE RAM 350 Dually, Cummins Diesel, 2WD, AT, AC, Ready To Tow! Red, 163,000 Miles \$8,900
- 1986 NISSAN EX CAB 4X4 Dually, W/Flatbed, Mechanics Special! \$1,200
- 1984 FORD F150 2WD, 3 Spd., 300 6 Cyl., Local Trade, Blue \$1,900

SUV'S

- 1998 CHEVY BLAZER LS, 4 3 V6, 4 Dr, 4x4, AT, AC, PW, PL, Alloys, Tilt, Cruise, PW Mirrors, Cass, 2 To Choose From, Starting At \$15,900
- 1996 FORD EXPLORER XLT 4 0 V6, 4x4, 4 Dr, AT, AC, PW, PL, Tilt, Cruise, Alloys, Cass, PW, Mirrors, Blue, 80,000 Miles \$13,900
- 1995 ISUZU RODEO 4 Dr, 4x4, V6, AT, AC, PW, PL, PW, Mirrors, Cass, CD, Tilt, Cruise, Airbags, Red, 59,000 Miles \$11,900
- 1993 MAZDA MPV, AWD, V6, AT, AC, PW, Cass, Tan, 55,000 Miles \$8,900

WE ALSO BUY CLEAN USED TRUCKS, OLD OR NEW, GAS OR DIESEL



(717) 949-6513

TRUCKERS
27" HD RATCHETS.....\$13.95
WINCH STRAPS.....\$12.95
RUBBER T. STRAPS......54¢
REFLEXITE RED/WHITE TAPE.....82¢/Ft.
TIRONIE TARPS
(800) 874-2928 • FAX: (570) 584-3127

Load Boss Trailers



814-623-8696

814-623-9696

FAX: 814-623-7995

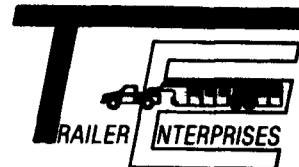
Quality Built Highway Dumps Built To Suit Your Working Needs:

Spring Sale
6 x 10 7,000 GVW \$3,200
6 x 10 10,000 GVW \$3,400

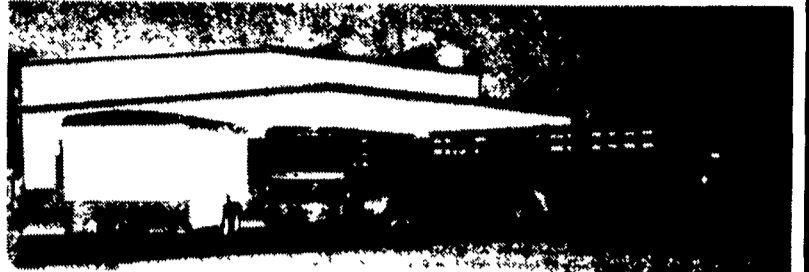
New* 3 way tailgate with dump truck style lever *painted color of choice* FREE 200 mile delivery

We Are The Factory No Middle Man!!

"Revvin' to take care of ALL your trailer needs."



HAS BUILT A REPUTATION



United Expressline 8x16 Cargo Moritz CBS 616 **EBY** Aluminum 7x20 Gooseneck

NEW & USED: STOCK - HORSE - CARGO - INDUSTRIAL - UTILITY - CAR HAULERS

Trailer Enterprises is here to serve you. We are a full service facility providing YOU with the very best service available in the industry!

TRAILER ENTERPRISES, INC.

13121 MAUGANSVILLE ROAD
HAGERSTOWN, MD 21740

Just give us a call at (301) 791-5343.

Hours: 8AM-5PM Monday-Friday
9AM-12 Noon - Saturday

28'x102" van, 1985 Trailmobile, very nice, \$1750. 570/546-5574.

16' steel bed, 39" frame sides, 1/4" floor, lift gate 3,000# elect maxon, very good cond, 717-597-9536.

City dump trailer, 36' frame, 32' aluminum box. 717-532-9271.

Triaxle dump truck, 1977 Int, 400 Cummins w/jake, 13 spd, 20,000 lb front axle, 46,000 rears 17 1/2' aluminum bed. 717-532-9271.

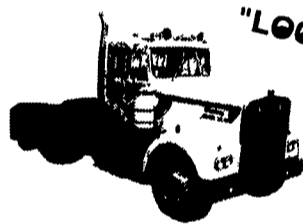
HUNTER KEYSTONE PETERBILT

1467 Manheim Pike • Lancaster, PA 17604

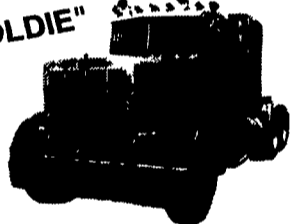
717 299-6630 • 800 243-2458



4 INEXPENSIVE TRACTORS



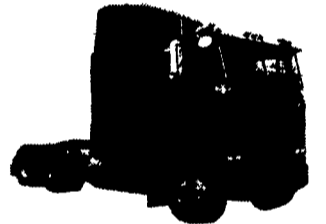
77 KW 900 Day Cab, NTC 290 Cummins Restoration Possibilities Quick Sale \$5,500.



81 Pete 359, Cat 3406, New Rubber and Alum Wheels, Lots of Work Done Collectors Dream Blowout \$10,500.



1989 Freightliner FLD120 Sleeper, NTC350, Jake, 9 Spd, Air Ride Our Loss, Your Gain - Needs Work, Must Go Must Go Stock # 342647 \$6,900



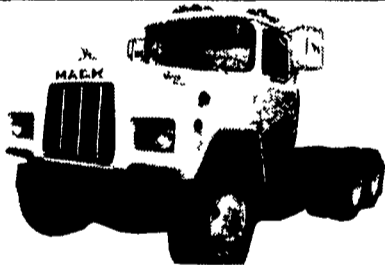
1988 Pete 362, 110" Cab, Selling for Customer Cheap At \$8,500.

Int. Truck Model 1984, 1989, GVW \$2,800, Only 111,000 Miles w/Jerre-Darr 15 Ton Rollback \$25,000 (215) 943-8305

ALUMINUM DUMP TRAILERS FOR SALE. MANY SIZES AVAILABLE. 610-921-1971

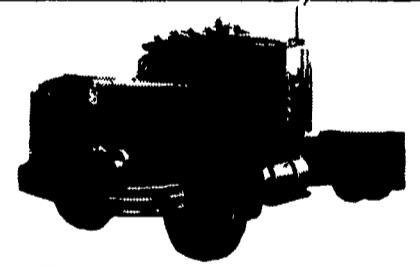
1985 Kenworth 855 Cummins Engine w/44' Dorsey Horse Trailer \$12,500/both 717-336-0080 610-693-3231

1987 Ford C8000 C&C, 3208 Cat engine, Allison auto. trans., 36,000lb GVW, Only 28,200 miles. \$4000 908/359-5934 evenings



1989 MACK R688 Tractor, Cleanest Bulldog Anywhere, New Paint and Rubber, Won't Last Long. (Stock #27314) \$15,000.

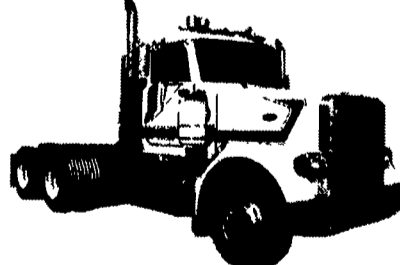
OVER 40 CLEAN USED TRUCKS IN STOCK Vans, Dumps, Chassis, Day Cabs, and Sleepers
Call One Of Our Experienced Salesmen:
Herv Ahiborn Brant Hamby
Dave Auker Ken Kametz
Nip Brown Ed Muldoon
Brian Fulmer Jeff Sider
Jim McElroy (Used Truck Manager)



1988 PETERBILT 377, Sleeper WITH WETLINE, 3406 Cat 350 HP, 9 Spd., Air Ride, 4.33 Ratio, Clean and Sound. Stock #257572 \$16,900.



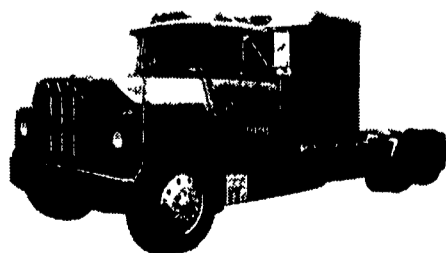
1993 PETERBILT MODEL 377, Detroit Diesel 60 425 HP, w/Jake Brake, 10 Speed, Peter Air Leaf; New Steer Tires, 8 new Caps on Rear, Bright Red, Clean Local Trade (Stock #332455) \$28,500.



1988 Peterbilt 357, Daycab, NTC 350 Cummins w/Jake Brake, 9 Speed Trans., 12/30# Axles, Air Ride Sups., 22.5 Tires, 700,000 Miles, White (Stock #256768) \$16,500.



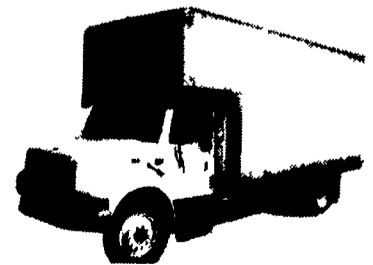
1994 Peterbilt 378, 36" Sleeper, Series 60 Detroit Diesel Eng. w/Jake Brake, Fuller 10 Speed Trans., Airleaf Susp., 219" Wheelbase, Clean Local Trade, 8 New Caps, (Stock #358096). Sale Price \$24,500.



BULLDOG LOVERS - LOOK AT ME! 1984 R688, Mack 350, 9 Spd., A/C, PS, 11R24.5 Tires, 48" Custom Sleeper, Nice Paint. Stock #006420 Only \$10,500.



1994 Int'l 9300 Eagle, 70" Sleeper, One Owner, 445,000 Actual Miles, 3406 Cat, 15 Speed, Jake, Aluminum Wheels, Air Ride, CD Unit, Loaded. Includes New Wetline, Loaded With Extras, Stock #077803 **Finest Eagle Anywhere: \$32,500**



1998 Int'l 4900 18' Van Non CDL, DT466-195 HP, 6 Speed, PS, AC, Only 144,000 One Owner Miles, Liftgate, None Nicer Anywhere - Won't Last Long, 25,500 Lb. GVW Stock #507572 \$29,900

NO NEED TO HUNT ANYMORE--- COME TO HUNTER'S