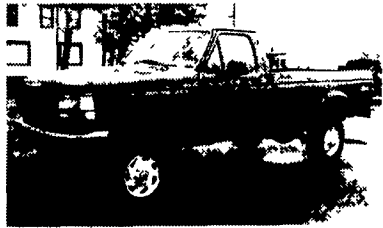




**98 GMC K3500 SL**  
Crew Cab, 4x4, 350 Vortec, AT, A/C,  
AM/FM Cass, Cruise, Tilt, 9200 GVW,  
Local 1 Owner, Dk Green, 53,000 Mi  
**\$21,500**



**97 FORD F350 4x4, XL**  
351 F1, AT, A/C, AM/FM, 9,000 GVW,  
4 10 Rear, 50,000 Mi, Dark Green  
**\$17,900**

**MARTIN'S AUTO SALES**

1025 W. Main St. New Holland, PA 17557  
**(717) 656-6621**



**1979 MACK RD686S TRI-AXLE  
19' DUMP TRUCK**  
300 Mack Engine, Engine Brake, Fuller 9 Speed,  
18K FA, 44K RA, Double Frame,  
Hendricksen Susp ... **\$14,500**

**Curry Supply Co., Curryville, PA**  
**1-800-345-2829**



**1998 FORD E450**  
Superduty, 25 Pass Bus (Metrotrans) 7.3  
Powerstroke Dsl, Auto OD, Front and Rear  
A/C, Power Doors, Tilt, Cruise, Cassette,  
High Level Interior, Blue/White, Excellent  
Condition

**Four Way Auto Sales** 770 W. Main  
New Holland, PA 17557  
717-354-3199

**DIESEL DROP INS**  
6 9E or F \$4,299  
6 9 Turbo  
w/Grade \$6,199  
88-94 7 3 Drop In  
E or F Series \$4,595  
88 - 94 Turbo  
Upgrade \$6,399

**Engine TRANSMISSION  
WAREHOUSE, Inc.**  
2857 Peters Mtn. Rd.  
Halifax, PA 17032  
**1-800-507-4359**

**"LOOK"**  
**ENGINE WARRANTY INCLUDES:**  
**TOWING MAX. \$50.00**  
**CAR RENTAL MAX \$25.00 Per Day**  
"AT NO ADDITIONAL COST"  
Warranty may vary with application.

Have Piece Of Mind!  
If You Bought An Engine Anywhere Else You Paid Too Much.  
We Offer More!

**WE ARE YOUR ENGINE AND TRANSMISSION SOURCE.**

**WE NOW SELL ENGINE INSTALL KITS.**

**WE ARE**

**1** Car Rental \$25<sup>00</sup> per day **GM**  
**2** Towing \$50<sup>00</sup> Max. **Ford**  
**3** HAVE PIECE OF MIND **GM**  
**4** American And Imports Engines **Ford**  
**5** 36 Months 100,000 Mi. Warr. **GM**

NATIONWIDE AND CANADA

We now sell import engines and transmissions

**CALL US FOR YOUR INSTALLATION NEEDS  
BEST WARRANTY IN THE INDUSTRY  
WARRANTY 36 MONTHS 100,000 MILES**

FREE TOWING WITHIN 25 MILE RADIUS  
W/ENG. OR TRANS. INSTALLATION



**1993 GMC Diesel w/14' Van Body, Auto Trans., AM/FM, 14,250 GVWR \$8,900**



**1989 Int. Model #900 32,900 GVW - 6 speed, 240 HP - 22' Van Body \$5,900**



**89 Ford 14' Cube Van Diesel, Automatic \$8,100 \$7,900 \$6,900**



**1992 GMC Topkick, 20,600 GVW, 5 Speed Cat Engine, A/C in Cab & in Insulated Body with Racks \$8,900**



**1986 Int. 9670 Cab Over, 6x4, Air Brakes, 350 Cummins-Fuller 10 Speed - \$6,100**



**24' Stake Body \$2,300**

**INTERNATIONAL CENTRAL GARAGE, Inc. UD TRUCKS**  
South 2nd St. (Rt. 419) Womelsdorf (Berks Co.) Pa  
**610-589-4581 or 800-860-4581**

**BRENNER**

**PHONE: 717-232-4271**

**www.brennerdodge.com Fax: 717-233-8221**

**RON JACKMAN**

Business Link Account Manager

**The New Commercial Sales Group**

Harrisburg's Only **BusinessLink™ Dealer**

"Saving the Small Business Owner Time, Money & Hassles"

**RAY MARINO**

Business Link Account Manager

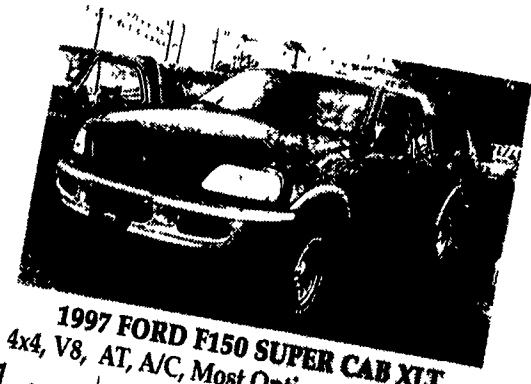


**2000 DODGE 3500 10' DUMP**  
Power Up & Power Down Cummins  
24V, Auto



**LAST ONE!**

**2001 DODGE 3500 QUAD CAB DUALLY 4x4**  
Cummins Turbo Diesel, AT, A/C, SLT,



**1997 FORD F150 SUPER CAB XLT**  
4x4, V8, AT, A/C, Most Options, 35,000 Miles

