

CHEVROLET GMC

Sutliff

GM PARTS

GENUINE GM PARTS FOR ALL GM VEHICLES
800-932-0284

Free Delivery Routes In 12
Counties In Central PA
Call For Specifics

25 PARTS PROFESSIONALS TO SERVE YOU
ENGINES - TRANSMISSIONS
A.C. DELCO - SHEET METAL
ALL IN STOCK AND PRICED RIGHT
IF YOU NEED GM PARTS
WE'VE GOT WHAT YOU NEED

SUTLIFF GM PARTS

13th & Paxton
Harrisburg, PA



We Want Your Business

A Goodwrench Service Plus Dealer
The Plus means better.

CHEVY TRUCK

Lancaster Farming, Saturday, June 17, 2000-D35

USED TRUCKS FOR SALE

- 1997 DODGE DAKOTA CLUB CAB SLT, 4x4, AT, A/C, Most Options, 98,000 Miles \$12,500
- 1995 FORD F350 4x4, Diesel, 5 Spd, A/C, 134,000 Miles. Call
- 1994 FORD F450 SUPER DUTY, 12' Box, 5 Spd Diesel, No Air, 68,000 Miles \$14,500
- 1993 CHEV. SUBURBAN 1500 4x4, AT, 106K miles, black. \$13,500
- 1992 Dodge Dakota Club Cab, 4x4, AT, A/C, Most Options, 87,000 Miles \$6,900
- 1989 FORD F250 4x4, 302 V8, 5 Speed \$6,900
- 1987 FORD F250 SUPER CAB, Diesel, AT, Most Options, 8,800 GVW \$3,500
- 1987 CHEV. C30 DUALY, 8ft Bed Setup for Towing, 4 Spd, 2WD, No A/C Call

1987 Volvo White tractor, single axle or with tag axle, conventional, 320 Detroit, good cond. \$4800. 717-776-7725

MACK PARTS FOR SALE: Engines, blocks, heads & cranks, cabs, hoods & doors, trans, rears. ALL MACK PARTS. REASONABLE PRICES. MACK TRUCKS BOUGHT (complete or parts). 1-888-625-6485

'92 Dodge Dakota LE, long bed, 4x4, 3.9 Magnum, V6, 5 spd, PS, PB, AM-FM cass., Michelin radials, one owner, 'ex. cond., \$6,900. 717-733-2873

'94 Dodge LE 150 short whl. base, 8 pass., 318 magnum, auto, PS, PB, PW, PDL, cruise, tilt, air, AM-FM cassette, privacy glass, 61,000 miles, excellent condition, \$9,950. 717-733-2873

SCHAEFFERSTOWN AUTO & TRUCK SALES

Rt. 501, 1-1/2 miles South of Schaefferstown
717-949-2812

Woodcrest Motors

SPECIALIZING IN TRUCKS & VANS
1200 North Reading Rd., (Rt. 272) Stevens, (Lancaster Co.) PA 17578
717-336-3130



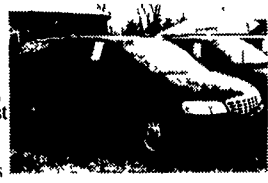
98 CHEV. ASTRO VAN EXTENDED AWD, 4.3 V6, AT, Dual Air, Most Options, Red Maple, 64,000 Miles. Special \$13,995



98 CHEV 3500 12 PASSENGER EXPRESS 5.7 V8, AT, Dual, A/C, T.C. 20,000 Miles \$17,500



97 DODGE GRAND CARAVAN SPORT 4 Dr., 3.3 V6, Dual Air, Most Options, Dk Green, 69,000 Miles \$12,900



97 CHEV. VENTURE EXTENDED V6, AT, A/C, Most Options, Dk Blue, 60,000 Miles \$12,300



98 FORD WINDSTAR V6, 7 Pass., Lt Blue, 25,000 Miles \$13,995



96 FORD CLUB WAGON XLT 15 Passenger, 5.8 V8, AT, Dual A/C, Most Options, 46,000 Miles, Black \$14,995

OLDS

BUICK

CADILLAC

PONTIAC

LIGHT DUTY COMMERCIAL TRUCKS

COLEY

PONTIAC • BUICK • GMC

<p>2000 GMC SAFARI MAXI 12' CONVENTIONAL VAN Lobby seat, chrome, tilt, 4 speakers, Pro Air center lock, and more! Stk# 7760. Was \$33,067</p> <p>\$27,995</p>	<p>2000 GMC SIERRA 3500 STAKEBODY Omaha Heavy Duty Body 12'x40' Stake Body Locking Rear and more! Stk# 7734</p> <p>\$25,999</p>	<p>2000 GMC SIERRA 1500 4X4 V6, AC, lock rear skid plates, HD suspension, AM/FM case. Stk# 7796</p> <p>ONLY! \$19,995</p>	<p>2000 GMC 3500 HD DUAL WHEELS CAB 7400 V8, AT, AC, 463 rear, PS, 1500 GVW Stk# 7721. Was \$27,297</p> <p>\$24,995</p>
<p>2000 GMC SONOMA AC, tilt, CC, alloy wheels, port. Stereo, Special and more! Stk# 7616</p> <p>\$11,995</p>	<p>2000 GMC SAFARI CARGO VAN V6, AT, AC, PS, PB, AM/FM and more! Stk# 7616 Was \$20,878</p> <p>\$18,495</p>	<p>2000 GMC 1/2-TON EXT CAB 4X2 PICKUP 2000/Verac V6, AT, AC, tilt, PW, PL, HD trailer pkg., 6200 GVW and more! Stk# 7507. Was \$27,761</p> <p>\$23,995</p>	<p>2000 GMC 2500 4X4 6000 V8, AT, AC, 8600 lbs GVW, lock rear, 4.70 rear, HD suspension and more! Stk# 7667. Was \$27,738</p> <p>\$24,995</p>
<p>2000 GMC 3500 HD STAKEBODY 6.5 Liter Turbo Diesel, 12000 GVW, AC, Locking Rear, Super Marauder Dump, Valued ABC Tool Box and More! Stk# 7721</p> <p>\$32,995</p>	<p>2000 GMC STAIR STEP BODY 6.5 Turbo Diesel, 12000 GVW, AC, Locking Rear, Complete Stahl USV Body w/ locking boxes Stk# 7793 Was \$35,188</p> <p>\$22,995</p>	<p>2000 GMC JIMMY 4X4 V6, tilt, CC, AM/FM cass., alloy wheels, rear defog and more! Stk# 7743</p> <p>\$20,995</p>	<p>2000 GMC 1500 EXT CAB Two-tone paint, 4-Dr, 5300 V8, HD trail pkg., PW, PL, tilt, CC Was \$31,782</p> <p>\$27,995</p>
<p>2000 GMC SAFARI PASSENGER VAN V6, PW, PL, tilt, CC, alloy wheels, and more! Stk# 7581. Was \$25,402</p> <p>\$19,998</p>	<p>2000 GMC 3500 STAKE DUMP AT, AC, V-8, 12,000 Heavy Duty Omaha Stake Dump with ABC toolbox, steel racks, electric hoist and more! Stk# 7781</p> <p>\$25,995</p>	<p>2000 GMC 2500 Complete Stahl 961VS service body w/top packs & ladder racks, 6000 V6, AT, AC. Stk# 7726 Was \$27,408</p> <p>\$21,995</p>	<p>2000 GMC 3500HD UTILITY BOX 6.5 Turbo Diesel, 15,000 lbs GVW, dual whls complete Stahl 132VVD, 20 gauge double panneled doors and more! Stk# 7746. Was \$37,895</p> <p>\$32,998</p>

610-363-7790 Credit Problems? We Can Help!



421 W. Lincoln Hwy. • Exton (Rt. 30-Across from Applebee's)
HOURS: Mon. thru Thurs. 9 am-9 pm • Fri. 9 am-8 pm • Sat. 9 am-5 pm • www.coleypontiacbuick.com • E-mail: JcoleyPBG@aol.com

Prices include all factory rebates to qualified buyers. Tax, tags & registration fees additional. See dealer for details. All prior sales excluded. Not responsible for errors and omissions.