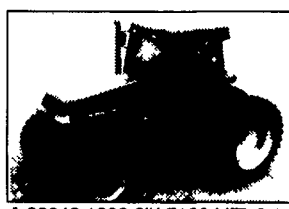


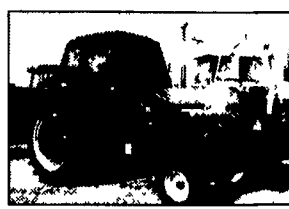
PUT ONE OF THESE TO WORK



A 22784 1999 CIH MX 200 MFD
Cab, 464 Hours, 540/1000 PTO,
18 4 x 42 Duals, Performance
Instrumentation



A 23043 1990 CIH 7130 MFD Cab,
7279 Hours, 18 4 R 42 Duals, 1000
PTO, 4 Remotes, 3 Pt Hitch



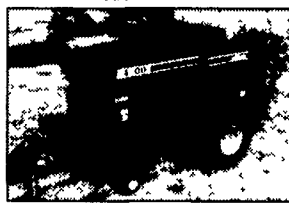
A 22911 1986 CIH 1594 2WD Cab,
1650 Hours, 18.4 x 38 Rear Tires,
85 HP



C 31138 1968 IH 756, 16 9 x 38
Duals, 310 German Diesel



B 19587 1992 JD 4560 2WD Cab,
1807 Hours, 1000 PTO, 3 Remotes,
18.4 x 46 Tires, Excellent Condition



A 22444 Hesston 4900 Baler,
26,000 Bales
WAS \$38,500, IS \$34,500



B 18906 1991 CIH 8580 Baler,
Makes 4x4x8 Bales,
SALE PRICE \$29,000



C 22296 1993 JD 1470 12'
Mower Conditioner, Rubber Rolls,
End-Pull, 1000 RPM PTO,
WAS \$8,450, IS \$7,500



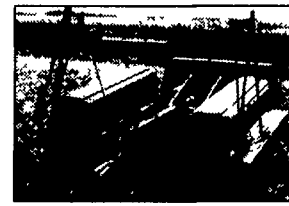
C 31177 IH 435 Baler
With Thrower,
WAS \$3,200, IS \$2,900



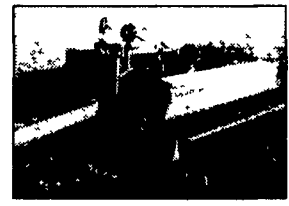
A 23035 1996 NH 415 Mower
Conditioner, 11' 4" Cut, Rubber
Rolls, 1000 PTO
SALE PRICE \$7,900



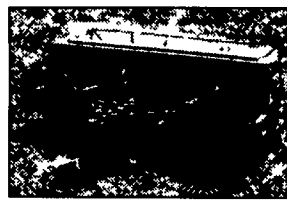
A 22883 JD 8350 12' Convent
Drill, 24 Row, 6' Spacing,
Double Disc, Excellent Condition
WAS \$3,500, IS \$3,200



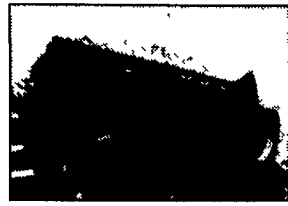
B 19196 JD 455 30' Conventional
Drill, 3 Section Folding, 6" Spacing,
4 x 12 Press Wheels, Cylinder &
Hoses, Excellent Condition,
SALE PRICE \$15,500



B 18365 1995 Great Plains 24'
NT Drill, 4865 Acres, Turbo
Coulters w/ 500 Acres, 3 x 13
Press Wheels
WAS \$41,500, IS \$38,000



B 19386 1990 JD 750 15 1/2
NT Drill, 7 1/2" Spacing, Yetter
Markers, Press Wheels,
SALE PRICE \$17,500



A 22813 CIH 5100 18 x 7
Conventional Drill, 3' Press Wheels,
Double Disc Openers
WAS \$4,500, IS \$4,300

USED TRACTORS

- A 22911 CIH 1594 2WD
- C 19607 CIH 5140 2WD
- B 19890 CIH 5230 MFD
- A 23138 CIH 5240 MFD
- A 23069 CIH 5250 2WD
- A 23013 CIH 5250 MFD
- B 19380 CIH 585 2WD
- B 19501 CIH 7110 2WD
- B 19582 CIH 7120 2WD
- A 23004 CIH 7120 2WD
- B 19583 CIH 7120 2WD
- A 19580 CIH 7120 MFD
- B 19581 CIH 7120 MFD
- A 23043 CIH 7130 MFD
- B 19584 CIH 7140 MFD
- B 19586 CIH 7140 MFD
- B 19585 CIH 7140 MFD
- B 19217 CIH 7240 MFD
- A 22780 CIH 7250 MFD
- B 18836 CIH 7250 MFD
- B 17774 CIH 8920 MFD
- A 17596 CIH 8930 MFD
- B 18993 CIH 9370 Quadtrac
- B 19706 CIH CX80
- A 23122 CIH MX135 MFD
- A 22937 CIH MX150 MFD
- B 23077 CIH MX180 MFD
- A 22784 CIH MX200 MFD
- A 18853 CIH MX220 MFD
- B 19947 CIH MX240 MFD
- A 17811 IH 1086
- B 18119 IH 1086
- C 22860 IH 1086
- C 31084 IH 1086 2WD
- C 30941 IH 300
- C 31092 IH 3788 MFD
- B 19599 IH 4600
- B 19755 IH 464
- B 18252 IH 580CK
- A 23121 IH 656
- A 19381 IH 656H
- B 19377 IH 756
- C 31138 IH 756
- B 19554 IH 886 2WD
- A 23031 STGR ST280
- B 19510 STGR ST310
- A 23046 CASE 2590 2WD
- B 19898 CASE 800
- C 31274 FIAT 880/5 MFD
- B 19689 FORD 2110
- A 22616 FORDSON
- A 23124 HSTNFT 80-66
- C 31108 MHGN 125D9Y
- B 19203 VRSTL 875

USED TILLAGE

- B 19636 DMI 530 Subsoiler
- B 19359 DMI Crumbler
- B 18868 DMI 3 Arm Subsoiler
- B 18505 DMI 5 Shank Subsoiler
- A 22955 DMI 5 Shank Tiger II Subsoiler
- A 23032 DMI 7 Shank Subsoiler
- B 22866 DMI 7 Shank 730 Ecolo-Tiger
- B 19130 FR 10 12 Chisel Plow
- A 22879 SF 4212 11 Chisel Plow
- B 19355 BR 8RN Cultivator
- A 23010 IH 183 Cultivator
- B 18068 MF 18' Cultivator
- B 17467 MG PT-2 32' Cultivator
- B 18067 UM 20' Cultivator
- B 22431 KR 6331 Landstar
- B 18870 CIH 720 6 x 180L Plow
- B 19843 IH 800 10x18 Plow
- B 17476 IH 145 4 x 18 Plow
- B 17477 IH 145 4 x 18 Plow
- B 17038 IH 710 Plow 6 x 16 IF
- B 19191 BR X108 21' Packer
- B 17326 UM 29' Basket

USED PLANTERS & DRILLS

- A 23119 GP 10' EW NT Drill
- A 23029 GP 24' Drill
- B 16662 GP 15' Drill
- B 18365 GP 24' NT Drill
- B 18940 GP 30' Conv Drill
- C 31352 IH 800 6RN Corn w/liquid fertilizer
- B 17790 IH 800 6RN Planter
- A 23011 IH 800 4RN Planter
- B 19196 JD 30 Drill
- B 19386 JD 750 Drill
- A 22883 JD 8350 12' Drill
- B 22782 JD 8300 21 x 7 Drill
- B 16778 JD 7240 8R Planter
- 19754 JD 7000-8RN Planter
- B 30373 WH 5400 6RN Planter

USED HAY & FORAGE

- A 23111 NH 1431 Mower Cond
- A 31379 CIH 8585 Baler
- C 31346 CIH 8545 Baler w/Thrower
- A 23053 CIH 8312 Mower Cond
- A 23035 NH 415 Mower Cond
- A 22444 Hstn 4900 Big Baler
- C 22296 JD 1470-12 Mower Cond
- A 22880 NH 1431-12 Mower Cond
- A 22723 RH Sr20-20 Batwing Mower
- B 18906 CIH 8580 Big Baler
- B 17722 CIH 1490 12' Mwr Cond
- C 31014 CIH 8420 Rnd Baler
- C 31177 IH 435 Baler w/thrwr

USED DISCS

- B 19694 KR 4915A 21'
- A 23078 IH 475 18'
- A 23092 MF 520 12'
- A 23104 Mlr 10'
- A 23117 KR 4924A 21'
- B 19354 MF 820 23'
- B 19435 KR 4918 27'
- B 19610 KR 4942WR 22.5'
- B 16907 IH 770 13'
- B 18976 IH 496 31'
- B 19360 JD 210 15'
- C 31217 JD 230 21'
- B 18669 JD 630 21'
- B 18970 KR 4907 25'
- B 17155 KR 4927A 27'
- B 16620 ML 28'

USED MISCELLANEOUS

- A 23025 Rhino 84" Mower
- A 23027 BH 2620 20' Mower
- A 22959 60 Fork Bucket
- A 22799 CIH 72 Bucket
- A 22938 CIH L700 Loader
- B 17109 CIH 1840 Skidsteer
- B 18260 FD 776B Loader
- B 18931 HR Baby Ditcher
- B 17976 HY V24A Lift Truck
- C 17801 CIH 1840 Skidsteer
- A 23101 Rynlds 14C-CS Scraper

JUST TRADED

- McALISTERVILLE STORE**
- 17230 CIH MX200 MFD Cab Tractor
 - 19607 CIH 5140 2WD Cab Tractor
 - 19250 CIH 254 4WD Tractor
 - 18405 CIH 1020-20' Grain Platform
 - 22953 CIH 1063, 6 Row, 30" Corn Head
 - 31399 MI MT 327D Tractor

JUST TRADED

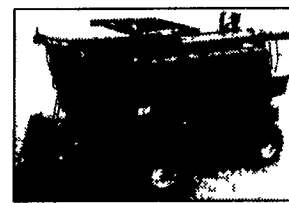
- McALISTERVILLE STORE**
- 23165 Hesston 4900 Big Baler
 - 23166 Krause 2483NR Disc
 - 23143 Rynlds 14C Scraper
 - 23162 IH 1460 Combine
 - 23169 Kewanee 18' Field Cultivator
 - 23171 IH 510 18 x 7 Drill
 - 23172 JR 1577 Disc
 - 23177 JD 7100 10R Planter

JUST TRADED

- McALISTERVILLE STORE**
- 40029 NH 411 Discbine
 - 40030 CIH 8585 Baler
 - 40041 GP 30' NT Drill
 - 40044 JD 4840-2WD Tractor
 - 19947 CIH MX 240 MFD Tractor
 - 19959 NH 650 4 x 6' Round Baler
 - 19960 Woods 3180 Mower
 - 19974 NH 489 Mower Cond
 - 19980 Clowll 400BU Grain Cart
 - 19910 FD F350 4WD Sprayer
 - 19932 BR 16' Solid Packer

AFFORDABLE ROTARY COMBINE

GET THE INDUSTRY STANDARD



A 22310 1995 CIH 2188 2WD
Combine, 1979 Hours, Specialty
Rotor, Rock Trap, GLM, Chopper,
Field Tracker, Tires: Steering -
14.9x24, Drive 30.5x32, Hooper
Uptime Service Has Been Done
WAS \$95,000, IS \$79,000



B 18502 1995 CIH 2188 Combine,
1866 Eng Hours, 1310 Rotor
Hours, Specialty Rotor, Rock Trap,
Chopper, Field Tracker, 2 Sp Hydro,
Tires: 30.5 x 32, 14.9 x 24
WAS \$85,000, IS \$79,500



C 31080 1980 CIH 1680 2WD,
4040 Hours Diesel, Sp Rotor, Rock
Trap, GLM, Deluxe Seat, Field
Tracker, Chaff Sprdr, Tires: Steering
- 14.9x24, Drive - 30.5x32,
Metal /Cab Int - Good
WAS \$49,000, IS \$45,000



C 31143 1987 CIH 1660 2WD,
3666 Hours, Field Tracker,
Standard Rotor, Rock Trap,
Grain Loss Monitor, Tires:
Drive - 30.5 x 32,
Steering - 18.4 x 16
RECENT TRADE \$42,500



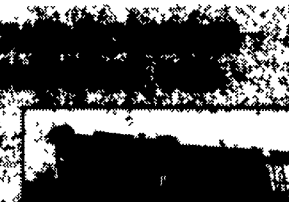
A 13011 1986 CIH 1640 2WD
Combine, 3105 Hours, Tires: 23.1
x 26 Front, 11.00 x 16 Rear, Cab
w/ A/C, Heat, Deluxe Seat, Hooper
Uptime Service Has Been Done
WAS \$39,000, IS \$29,500



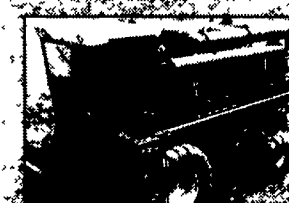
B 17120 1990 JD 9600 2WD,
Feeder Reverser, Auto Hdr Cntrl,
Deluxe Seat, Radio, Chopper, 2wd,
Tires: Drive - 30.5x32, Steering -
18.4x26, 3175 Hours
WAS \$57,000, IS \$48,000



A 13011 1986 CIH 1640 2WD
Combine, 3105 Hours, Tires: 23.1
x 26 Front, 11.00 x 16 Rear, Cab
w/ A/C, Heat, Deluxe Seat, Hooper
Uptime Service Has Been Done
WAS \$39,000, IS \$29,500



B 17120 1990 JD 9600 2WD,
Feeder Reverser, Auto Hdr Cntrl,
Deluxe Seat, Radio, Chopper, 2wd,
Tires: Drive - 30.5x32, Steering -
18.4x26, 3175 Hours
WAS \$57,000, IS \$48,000



A 13011 1986 CIH 1640 2WD
Combine, 3105 Hours, Tires: 23.1
x 26 Front, 11.00 x 16 Rear, Cab
w/ A/C, Heat, Deluxe Seat, Hooper
Uptime Service Has Been Done
WAS \$39,000, IS \$29,500



B 17120 1990 JD 9600 2WD,
Feeder Reverser, Auto Hdr Cntrl,
Deluxe Seat, Radio, Chopper, 2wd,
Tires: Drive - 30.5x32, Steering -
18.4x26, 3175 Hours
WAS \$57,000, IS \$48,000

www.hooper.com

WE ARE LOOKING FOR AN EXPERIENCED MECHANIC

McAlisterville, PA Location

We Offer A Competitive Benefits Package That Includes:

- 401K Package
- Profit Sharing
- Comprehensive Health Insurance
- Fully-Equipped Service Truck

Don't Miss Your Chance to Work with the Latest Farming Technology!

Fax Resumes to Tom Yohe
(717) 768-3005
or Call Today!
1-800-732-0017

FARM MACHINERY RUNS BETTER WITH HOOBER'S A



Authorized UPS Station

All New & Used Products Backed By Hooper Parts & Service
VISIT OUR WEBSITE: www.hooper.com