

Leesport Livestock

Leesport, Pa.

7 June 2000

Report Supplied By PDA

CATTLE 248 [PDA] [Supply included 126 steers and heifers, 90 cows, 11 bulls and 21 feeder cattle] Compared with last week's sale, sl steers steady to spots 200 higher, cows unevenly steady, bulls steady

SLAUGHTER STEERS High Choice and Prime 2-4 1200-1440 lbs 74 00-75 50 with one 77 50, Choice 2-3 1120-1375 lbs 69 50-73 00, few 1475-1590 lbs 64 75-68 00, Select 1-3 62 00-68 50, Standard 1-2 54 50-60 00

Holsteins High Choice and Prime 2-3 1245-1495 lbs 65 00-68 00, Choice 2-3 1245-1600 lbs 59 75-64 75, Select 1-2 54 75-61 00, few Standard 1-2 45 75-52 75

HEIFERS few Choice 2-4 1035-1080 lbs 67 00-71 00, few Select 1-3 61 75-64 75, Standard 1-2 49 50-56 00

COWS Breakers 75-80% lean 41 75-45 75, low dressing down to 39 50, Boners 80-85% lean 38 00-43 75, Lean 85-90% lean 34 00-42 75 Shells down to 25 00

BULLOCKS few Select 1-3 57 00-57 50

BULLS few Yield Grade 1 1390-2650 lbs 52 00-56 50, couple Yield Grade 2 1250 & 1335 lbs 40 00 & 50 50

FEEDER CATTLE STEERS one Large 1 87 50, few Large 2 285-580 lbs Holsteins 85 00-95 00, **HEIFERS** Medium and Large 1 400-625 lbs 80 00-95 00, Medium and Large 2 560-660 lbs 63 50-75 00, **BULLS** one Medium 1 480 lbs 77 50, Medium and Large 2 300-350 lbs 80 00-95 00 with one 110 00

CALVES 209 Vealers steady **VEALERS** few Good 115-135 lbs 57 50-80 00, Standard and Good 80-105 lbs 30 00-50 00, Utility 70-115 lbs 20 00-25 00

SLAUGHTER CALVES few 215-350 lbs 80 00-90 00

FARM CALVES Holstein bulls 15 00 to 20 00 higher, Holstein heifers steady No 1 Holstein bulls 95-125 lbs 150 00-180 00, 80-90 lbs 120 00-155 00, No 2 80-125 lbs 80 00-155 00, few to 60 00, couple No 1 Holstein heifers 95 lbs 275 00 & 295 00, No 2 75-130 lbs 125 00-260 00

Beef type bulls and heifers 95-130 lbs 95 00-150 00

HOGS 51 BARROWS AND GILTS 45-50% lean 230-280 lbs 43 75-44 00

SOWS couple US 1-3 335 & 370 lbs 31 50 & 33 50, couple 625 & 715 lbs 38 00

FEEDER PIGS 113 US 1-3 30-50 lbs 87 50-125 00, Utility 25-65 lbs 65 00-77 50 --- per cwt

SHEEP 35 **SLAUGHTER LAMBS** Choice 35-45 lbs 112 00-145 00, 50-70 lbs

100 00-122 50, couple 100 & 120 lbs 92 50 & 97 50, few Mouflon lambs 20-25 lbs 115 00-205 00, 65-70 lbs 75 00-80 00

SLAUGHTER SHEEP 23 00-45 00, couple Yearlings 50 00 & 52 50, one Mouflon lamb 90 00

GOATS 18 [All sold by the head] One Large Billy 95 00, few Medium 57 00-69 00, Large and Medium Nannies 52 50-65 00, couple Large Kids 42 50, Small 15 00-20 00

Eighty-four Livestock

Eighty-four, Pa.

5 June 2000

Report Supplied By PDA

CATTLE 175 [PDA] **SLAUGHTER STEERS** one Select 1-3 62 50, couple Standard 1-2 56 00 & 57 00 **HOLSTEINS** few Choice 2-3 1195-1455 lbs 61 50-66 00, one Select 1-2 58 50 **HEIFERS** one Select 1-3 65 50, few Standard 1-2 45 00-53 00

COWS Breakers 75-80% lean 39 00-45 00, Boners 80-85% lean 36 00-42 00, Lean 85-90% lean 32 00-36 50 Shells 32 50 & down

BULLS Yield Grade 1 930-1925 lbs 50 00-60 50, Yield Grade 2 1230-2250 lbs 45 50-50 50

FEEDER CATTLE STEERS few Medium and Large 1 345-570 lbs 87 00-95 00, few Medium and Large 2 340-910

lbs 60 00-82 00, **HEIFERS** few Medium and Large 1 375-565 lbs 83 00-87 00, Medium and Large 2 400-475 lbs 77 50-81 00, 515-855 lbs 51 00-75 00, **BULLS** few Medium and Large 1 365-500 lbs 78 00-89 00, 560-820 lbs 65 00-85 00

CALVES 232 [All calves sold per cwt] **VEALERS** couple Choice 145 lbs 95 00 & 130 00, two Good 145 & 205 lbs 80 00, Standard and Good 90-125 lbs 35 00-70 00, 65-80 lbs 32 50-60 00, Utility 55-90 lbs 20 00-32 50

FARM CALVES No 1 Holstein bulls 90-130 lbs 135 00-185 00, No 2 80-110 lbs 75 00-130 00, No 1 Holstein heifers 80-125 lbs 285 00-325 00, No 2 75-110 lbs 150 00-200 00

Beef type bulls and heifers 75-110 lbs 100 00-180 00

HOGS 20 **BARROWS AND GILTS** 45-50% lean 230-265 lbs 40 00-46 25, lightweights 40-45% lean 100-165 lbs 56 00-70 00

SOWS one US 1-3 505 lbs 35 50

FEEDER PIGS 0 NO MARKET TEST

SHEEP 184 **SLAUGHTER LAMBS** Choice 20-50 lbs 88 00-109 00, 55-75 lbs 85 00-98 00, 90-115 lbs 98 00-105 00

FEEDER LAMBS Good and Choice 30-60 lbs 75 00-85 00

SLAUGHTER SHEEP 15 00-38 00

GOATS 41 [All sold by the head] Large Billies 75 00-105 00, Medium 45 00-65 00, Large Nannies 53 00-67 00, Medium 33 00-50 00, Large Kids 30 00-35 00, Small 5 00-20 00

1855 lbs 48 00-50 50

FEEDER CATTLE STEERS few Large 1 1080-1145 lbs 61 50, **HEIFERS** few Medium and Large 2 400-995 lbs 60 00-65 00

CALVES 153 **VEALERS** Standard and Good 80-100 lbs 37 50-50 00, Utility 55-75 lbs 15 00-25 00

FARM CALVES No 1 Holstein bulls 120-135 lbs 140 00-167 50, 90-115 lbs 180 00-203 00, 80-85 lbs 135 00-150 00, No 2 90-125 lbs 100 00-188 00, few No 1 Holstein heifers 90-115 lbs 300 00-330 00, No 2 70-140 lbs 160 00-280 00

Few beef type bulls and heifers 80-120 lbs 130 00-180 00

HOGS 184 **BARROWS AND GILTS** 49-54% lean 220-280 lbs 46 75-47 10, few 48 75, 45-50% lean 220-280 lbs 44 00-46 00, 40-45% lean 220-310 lbs 41 85-43 75

SOWS US 1-3 390-665 lbs 33 00-41 00

BOARS few 235-280 lbs 23 00-30 00, couple 385 & 400 lbs 17 00

FEEDER PIGS 13 US 1-3 105-140 lbs 70 00-85 00 --- per cwt

SHEEP 121 **SLAUGHTER LAMBS** Choice 50-100 lbs 70 00-100 00, Good and Choice 35-50 lbs 50 00-77 50, 50-100 lbs 65 00-80 00

SLAUGHTER SHEEP 20 00-39 00

GOATS 29 [All sold by the head] Few Large 42 50 86 00, Medium 30 00-50 00, one Large Kid 32 50, Small 9 00-22 00

Morrison's Cove Poultry & Rabbit

Martinsburg, Pa.

Report Supplied by Auction

Monday, June 5, 2000

ROOSTERS 3.00-7.25.

BANTY ROOSTERS 1.00-5.00.

HEAVY HENS 3.25-6.00.

BANTY HENS 2.00-5.75.

PIGEONS 2.00-6.50.

GUINEAS 4.00-7.25.

DUCKS 3.25-5.25.

MUSCOVY HENS 3.50.

MUSCOVY DRAKES 4.75.

BUNNIES .50-4.75.

RABBITS 2.00-14.75.

AUCTION MON., 7:30 P.M.

New Wilmington Livestock

New Wilmington, Pa.

5 June 2000

Report Supplied By PDA

CATTLE 95 [PDA] **SLAUGHTER STEERS** one Choice 2 3 1415 lbs 70 50 couple Standard 1-2 58 00 & 58 50

HEIFERS couple Choice 2-4 1115 & 1325 lbs 66 50 & 67 75 couple Standard 1-2 53 00 & 59 00

SLAUGHTER COWS Breakers 75 80% lean 40 50-45 25, Boners 80-85% lean 38 00-42 50, Lean 85 90% lean 32 75-38 50 Shells down to 28 00

BULLS few Yield Grade 1 2 1520-

MRI - At Affordable Rates \$475.00



LEBANON OPEN MRI

1033 Quentin Road
Lebanon, PA 17042

717-228-2600

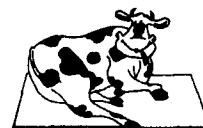
800-298-1558

Call 8 AM - 5 PM M-F

Most Insurances Accepted

- New state-of-the-art Open MRI
- Most experienced Radiologists in the area
- Friendly professional staff
- Reports to your doctor within 24 hours
- We accept \$475.00 cash or credit card as full payment for a normal study, including doctors reading fee.

It's Worth The Drive Ask For Us By Name



Pasture Mat

The Golden Standard In Cow Comfort



Why Pasture Mat?

Pasture Mat is tightly stuffed with rubber and sewn every 4" to prevent shifting.
Proven most durable top cover.
Least abrasive top cover on the market.
Fits any stall.
Proven performance.

The Rewards

- Better Cow Health
- Reduced Leg Injury
- Reduced Swollen Hocks
- More Lactation Per Cow - More Milk
- Reduced Bedding Costs
- Pasture Mats Often Pay For Themselves Within 6 Months.

For details and installation with over 6 years experience, call:

Petersheim's Cow Mattresses

117 Christiana Pike (Route 372), Christiana, PA 17509

U.S. Pat. No.
5653195

610-593-2242

Ask For Merrill or Sam

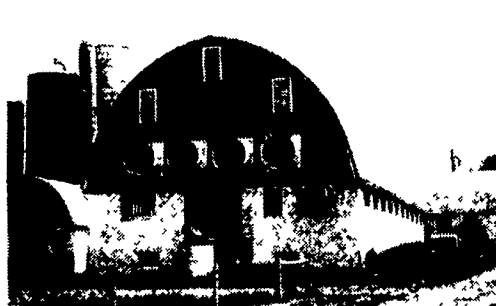
Keep Your Cows Comfortable with "TUNNEL VENTILATION"

Comfortable Cows Produce More Milk

The Ventilation System Experts
aerotech



Free Stall Barn, Robesonla, PA



Tie Stall Barn, Myerstown, PA

ATTENTION FREESTALL & TIE STALL BARN OWNERS!

Let Us Show You A Recent Tunnel Ventilation System In A Freestall Barn.

Barn Kooler® Air Circulation Fans

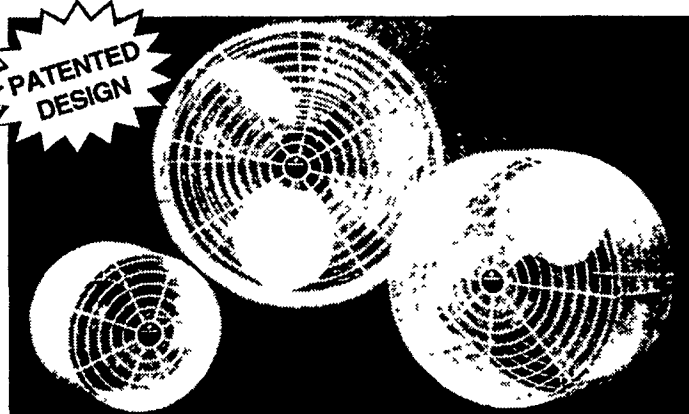
IN STOCK:

24" - \$188⁰⁰

36" - \$199⁰⁰

5 or More \$5⁰⁰ OFF

Receive Year-Round benefits for your livestock with a Schaefer Barn Kooler



SCHAEFER
Ventilation Equipment

WILL SHIP ANYWHERE

Call CEDAR CREST To Assist You In Designing Your Ventilation System.
We Also Do Complete Installations

Cedar Crest Equipment



339 King Street
Myerstown, PA 17067

(717) 866-1888 • 1-800-646-6601

Parts Outlet
RD 2 Box 271
East Earl, PA 17519
(717) 354-0584