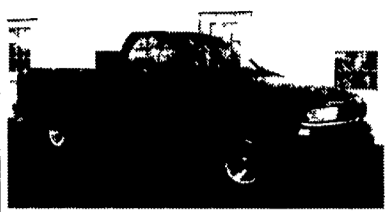


Anthony L.

LANDIS

AUTO SALES

3394 Division Hwy., New Holland, PA 17557 (717) 355-0644
Rt 322, 1-1/2 mi west of Blue Ball

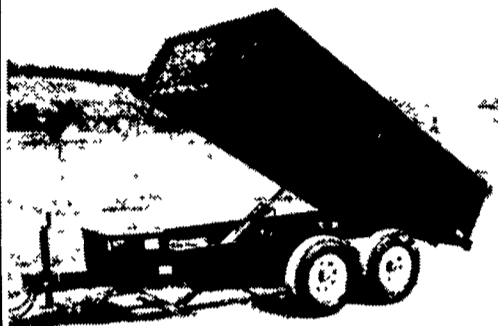


98 CHEVY S-10 LS
Shortbed, 2.2, 5 Sp., PS, PB, A/C,
Very nice Dk Green, 56,000 Mi
\$8,800



97 FORD F-150 XLT 4x4
4.2 AT, PS, PB, PW, PDL,
AC, Cruise, Cassette,
77,000 Mi., Blue
\$14,900

Load Boss Trailers



814-623-8696

814-623-9696

FAX: 814-623-7995

Quality Built Highway Dumps Built To
Suit Your Working Needs:

Spring Sale 6 x 10 7,000 GVW **\$3,200**
6 x 10 10,000 GVW **\$3,400**

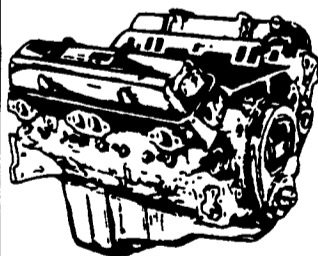
New* 3 way tailgate with dump truck
style lever *painted color of choice*
FREE 200 mile delivery

**We Are The Factory
No Middle Man!!**

JONES

GENUINE
GM Parts

Nothing's better
than an original.



GM GOODWRENCH
350 V8 1973-85
Part Number
10067353
New Engine - Not
Rebuilt
36 Month or 50,000
Mile
Warranty

New Engine - No Core Fee **\$1,295.00**

**WE'LL
MATCH ANY
COMPETITOR'S
PRICE!**

**Goodwrench
Transmissions
Now In Stock!
Call For
Great Prices**

Call 394-0711 for prices on other
New or Remanufactured
Goodwrench Engines. 2.5 Liter thru
454 cid. Gas and Diesel

JONES GM PARTS CENTER

1335 Manheim Pike, Lancaster, PA 17604
Easily Located on Rt. 72 Just off of Rts. 283 & 30
Hours: Mon-Fri 7:30 a.m. - 8 p.m. Sat 7:30-3

(717) 394-0711

MORE THAN JUST POWER.

**GM PERFORMANCE
PARTS**

36 REAL ESTATE

FARMETTE Juniata Co.,
McAllistersville, PA 18 +
Acres, 2 Sty, 4BR, 1Ba,
new windows, new roof.
Stone spring house, 28x42
garage. Small barn &
paved drive. Nice loca-
tion. 717-463-3851

Lanc Co 24 Acre Farm,
Sm 3BR, 1 1/2 Ba, Newly
Renovated Farm House,
Perfect for Horses.
717-361-8492

FOR SALE 400+ ACRES
Wheat Straw in Field,
Luzerne & Columbia
County, Could be Made
Available on Yearly
Basis. 570-864-3113

117 Acres, Cumberland
Co. Nice large renovated
4BR house, barn, large
shed, ponds, mt. streams,
72A cropland.
717/532-8689.

143 acres Cumberland
Co., 102 cropland, 41
woods, bordering State
Game Lands, no buildings
to repair, start fresh.
717/532-8689.

Summer cottage at Lake
Aldred, PA (Susquehanna
River) on 1/3 Ac wooded
lot w/stream. Boat stor-
age & screened-in picnic
area under house. River
front access & private
dock included. \$85,000.
717-246-1316

30 Wooded acres, Clear-
field Co., PA. 25 min west
of State College. Quick
sale! \$21,500. 717-653-0069
before 9pm

Sandstone half farm-
house, 3br, 2 ba, lg kitch-
en, 4 bay barn down-
stairs. Avail 50 ac pasture
w/stream. 1 yr lease.
Imm poss \$625. Lancaster
Co. 717-336-8218

Swine Farm for sale:
113A plus 3BR rancher,
2BA, 5 barns. Licensed
food recycling bus near
Bridgeton, NJ. Call Rov-
ner Realty, 856-455-1900.

York Co Farmette: 6+
acres, set up f/horses, 4
stalls, tack area, riding
arena, 3 acres fenced,
deeded right away to rid-
ing trails, 5BR, 3BA house,
pool, playhouse, guest
house. Call CENTURY 21,
Dale Realty, 1-800-421-2521.

22 Acres tillable ground,
York Co, Manheim Twp,
PA near MD line. \$115,000
firm. 717-235-4189

2ac wooded area w/
stream in Bethel Twp,
3BR, kitchen, DR, LR, +
additional rms, electric &
wood heat, large 2-sty
detached garage, \$95K.
717-272-3839.

10ac farm S. Leb., 3BR,
1 1/2 BA, large kitchen,
attic, full basement, oil
heat, 3 car garage, picnic
deck, bank barn, storage
shed, horse stalls, riding
ring, lots of pasture,
\$350K. 717-272-3839.

Bedford Co, 135 acre
farm, good farm land &
exc hunting, house, bank
barn, new pole barn,
\$250,000. 410-848-0746.

Bedford Co: 120 acre
farm or hunting camp,
4yo trailer, half woods
half open, \$175,000.
410-848-0746.

214 Acre farm, northeast
Missouri, Scotland Co.
717-733-2808

Land Needed! Our build-
ers need ground in the
Tri-county area for fu-
ture developments. Get
paid top dollar for your
parcel. Nothing too large
or too small. Call Ryan C.
Hess. Berks Const
717-581-4911

FOR RENT or FOR SALE-
200 Acre Dairy Farm
106 Free Stalls, Milking
Parlor, Good Heifer Facil-
ity, 4 Silo's, TMR Mixer.
Bedford Co., 814-839-4271

STERLING REALTY
GROUP 717/243-3000. 77A
in Carlisle area w/water
& sewer, \$839,900. 430A
mt. land in the Bedford
area, \$800/A. Call Barton
Carpenter 717/243-3429.

(2) Grade A dairy farms,
central Wisconsin. 68 & 58
file stall barns, can divide,
\$2000/per acre with or
without personal. Retiring
farmer. 715-223-8090
715-687-4999

Franklin Co, PA. Com-
plete dbl 6 automated
dairy on 5 ac w/house
trailer. Feed & manure
storage for 120 cows. Ex-
cellent opportunity if you
want to just milk cows.
717-762-4354

Christmas Tree Farm &
Land, Bloomsburg Area,
72 Ac. 40,000 Christmas
Trees, Doug Fir 5'-Up.
Great Hunting, Fishing Lo-
cally, Spectacular Views.
\$150,000. 610-269-1893.
Discount Available for
Quick Settlement

Looking to lease/buy,
modern pig finishing build-
ing, 1500 head & up.
Central/Eastern PA.
717-933-9397

Southern Chester Co., PA.
40 +/- acre farm, house,
barn. All tillable. Call
owner for info \$525,000.
610-932-4952

MISSOURI

FREE Brochure of
dairy farms and
ranches.

Low taxes, long
growing season.

417-469-2316

Baker Realty
Box 36
Willow Springs, MO 65793
http://www.bakerealty.com

SOUTHERN VIRGINIA FARMS FOR SALE AND LEASE

Freddie S. Smith

540/639-2262

after 8 pm

NY Southern Tier

Farm For Sale
by Owner

192 Acres,

50+ Acres

Tillable. Small

Barn Large

House

607-478-8228

FARMS FOR SALE

Dairy Farms for sale. Some bare, some stocked
& equipped. Call Ken, Jeff, Ted, Gerald or
Brian for free catalog.

CHRISTENSEN SALES CORP

Abbotsford, WI (715) 223-6345

Thinking of marketing your farm?

You need to call on the experience of Harry Zimmerman
for professional confidential service.
Specializing in tax deferred exchanges.

TOWN & COUNTRY REALTY

717-299-4885 OFFICE

717-358-2048 HOME

MECHANICSBURG, PA

1812 rest., 1750 sq. ft., 4+ ac., 3 car.,
fenced, zoned agr., low taxes, imm. poss.
\$289,000



Century 21
G&B Associates
1-800-841-5573
must ask for Gayle!

38 ACRE GENTLEMAN'S FARM Lancaster County, PA

Elegant 4 year old 3,000 sq. ft. custom home.
Four bedrooms, 2-1/2 baths, formal dining
room, large great room w/brick fireplace, mas-
ter suite on 1st floor. Includes 10 acre pasture
(3 A wooded) w/spring fed stream, 28 Ac. tilla-
ble. Spectacular views overlooking Lititz &
Manheim. This is truly a prime property for the
horse enthusiast or gentleman farmer. Offered
for sale by owner.

\$579,000

For Info or Showing Write to: P.O. Box 513
Lititz, PA 17543

100+ Acres, Approx. 80+ Tillable.
5000+ X-Mas Trees. Home - 2 Story, 4
BR, 2 Ba, 5 Yrs. Old, Also a 30x40 Pole
Shed. Richfield, Juniata Co.
\$295,000 (717) 694-9248

DON'T GIVE THE FARM AWAY

Our exclusive group of developers and
builders need more residential/commercial
land in Lancaster, Chester, Berks and York
Counties. We have developed fantastic
programs to pay you the most for your land.

• Partnership Programs • Tax Free
Exchanges • Trusts • Tax Deferral Plans
• Quick Cash Programs • Guaranteed Sales

Free consultation call now

717-581-4911

Ryan C. Hess

Re/Max Associates of Lancaster

FOR SALE

Investors Delight



Walk to Shippensburg University
Four Units, All Rented, Very Good Tenants.

Approved by "BOCO" Owner Retiring,
Terms Poss. Call Bob, Hometowne



717-267-0707

BEDFORD COUNTY - 56

acre farm with restored log
home. New metal beef or horse
barn, vinyl pasture fence approx.
25 acres cleared, balance
wooded. Don't miss this one.



Results Realty Group
Logan Centre, 1001 Logan Blvd
Altoona, PA 16602



814-946-9355

Wes Appleyard

814-934-3142

Bedford Co., PA: Private & peaceful
1-sty. log ranch home, 6.7 acres, very
close to State Land. Motivated sellers!
\$89,900

20 Acre Farmette: 3BR home, good barn
\$159,900

Country: 96 double wide w/lg. 2-car
garage, on 1.2 acres **\$95,000**



814-623-1159

LAND FOR SALE SULLIVAN AND LYCOMING COUNTIES

• This 321.39 Acres in Cherry Twp., Sullivan Co., has it
all, super view, old apple trees, springs, pond sites, and
Excellent Hunting. Enjoy peace and seclusion, watch the
sun rise and set. Asking \$214,900.

• Lycoming Co.: 54.5 Acres in the North Mt. Area of
Jordan Twp. woods and fields, super view, trout stream,
pond site, good hunting area, old barn. Lot's of Road
Frontage. Build Your Dream Home Or Cabin Here. Asking
\$109,900.

• Sullivan Co.: 1,000 Acres with a 100 Acre Lake,
borders game land #66 & 13 excellent hunting area for
deer, bear, turkey, ducks and geese. Owners will finance
and will consider selling all or part - Call Now!

REALTY EXCEL #705 ON RT. 405

Hughesville PA, 17737 • 570-584-6116

**Call Ron Arthur 570-482-2040 Specializing In Land
Sales - Call Toll Free 1-888-431-7283**