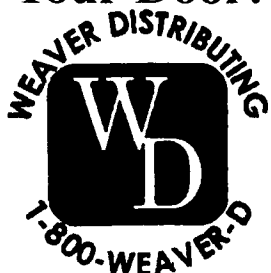


35

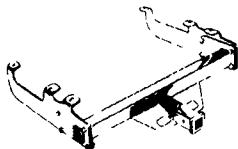
**TRUCKS  
AND  
TRAILERS**

17-22' Steel Flatbed Truck Body w/Strap Tiedowns & Bulkhead, Was block body, Good Condition, \$1200/obo. Delivery Possible. 717-867-4629 717-867-1269

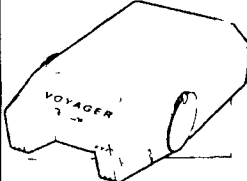
Weaver Distributing  
**Warehouse Direct To  
Your Door!**



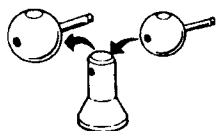
**Trailer Hitches  
Class 1 thru 5**



**Brake Controls  
\$59.95**

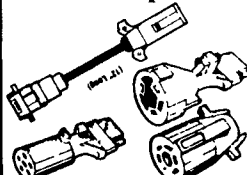


**Convert-A-Ball  
\$31.95**

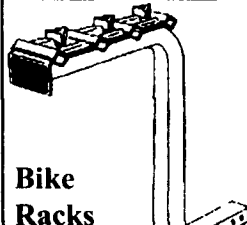


REMOVE BALL-REPLACE WITH DESIRED SIZE

**Elec. plugs  
and adapters**



**Pintle Hooks and  
Accessories**

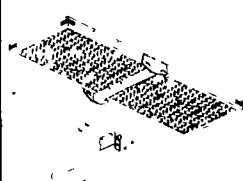


**Bike  
Racks**

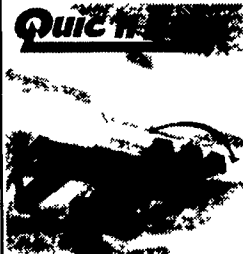
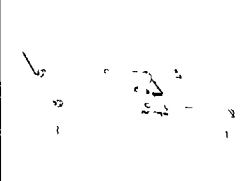
**Triple Tow Mounts  
Black or Chrome  
balls**



**Cargo Carrier  
\$89.99**



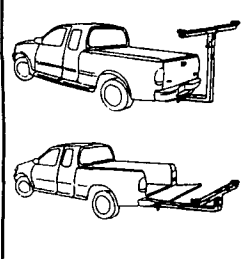
**Fold-down  
Gooseneck Hitch**



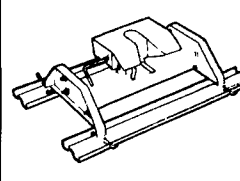
**Pop-Up  
Gooseneck Hitch**



**Extend-A-Truck  
\$99.00**



**Firehawk 5thwheel  
Gooseneck Hitch**



**Adjustable  
Ballmounts**



Free shipping for most orders

Call For a Free Catalog  
1-800-932-8373  
1-800-WEAVER-D  
Weaver Distributing  
125 Blue Mountain Rd.  
Fredericksburg PA  
17026

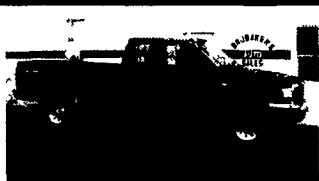


# BRUBAKER'S AUTO SALES

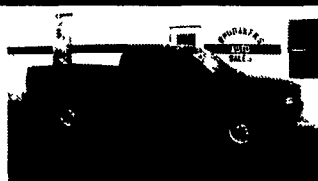
PH. 717-866-5237

Hours: Mon.-Fri. 8 a.m.- 6 p.m.; Sat. 8 a.m. - 6 p.m.

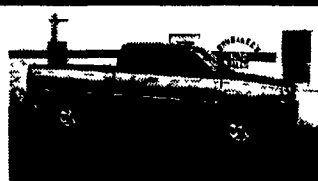
ROUTE 422  
MYERSTOWN, PA



99 FORD F250 XLT, Quad Cab, 4x4, Power-Stroke Black 6 Sp, AC, PW, PL, CC, Tilt, AM/FM/Cass/CD 38 095 Mi **\$28,900**



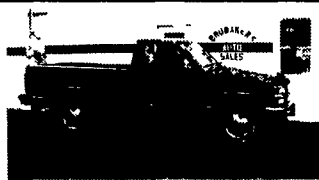
98 DODGE DAKOTA SPORT, 4x4, Ext Cab, Black, 318 V8, AT, AC, CC, Tilt, AM/FM/Cass/CD, 66,375 Mi **\$15,900**



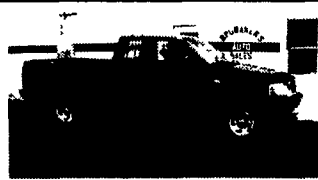
98 DODGE RAM 1500, Laramie SLT 4x4, Quad-Cab, Green/Gray 318 V8, AT, AM/FM/Cass, AC, PW, PL, CC, Tilt, Keyless Entry 18,180 Mi **\$21,500**



97 FORD F-250 XLT 4x4, Ext Cab, Maroon/Tan, 5 4 V8, AT, AM-FM Cass, AC, PW, PL, CC, Tilt, 67,800 Mi **\$17,900**



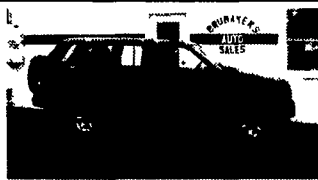
97 CHEVY 1500 CHEYENNE, 4x4, Green, 305 V8 5 Sp AM/FM Cas, AC, CC Tilt, 74,665 Mi **\$13,900**



97 FORD F-150 XL, 4x4, Ext Cab, Black, 4 6 V8, AT, AM-FM ST, AC, 177,550 Mi **\$10,900**



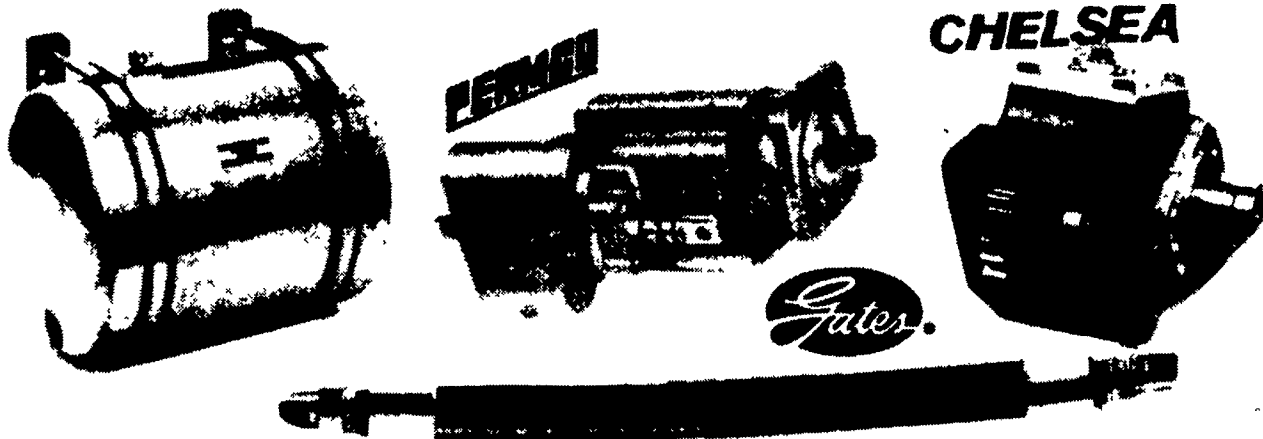
96 DODGE RAM 1500 SPORT, 4x4, Ext Cab, Red, 360 V8, AT, AC, PW, PL, CC, Tilt, AM/FM/CD Pwr-Seat, 47,325 Mi **\$16,900**



95 NISSAN PATHFINDER XE, 4 Dr, 4x4, Black, V6, AT, AM/FM/CAS, AC, PW, PL, CC, Tilt, Keyless Entry, 72,245 Mi **\$10,900**

## Attention: Truck Owners

We install wet lines on all types of trucks



Call Don TODAY for a quote on your next installation

# Beiler Hydraulics

HYDRAULICS • PNEUMATICS • POWER TRANSMISSION

440 Concrete Ave., Leola, PA 17540 • 717-656-4878 • Fax 717-656-4682

## Huntingdon Equipment

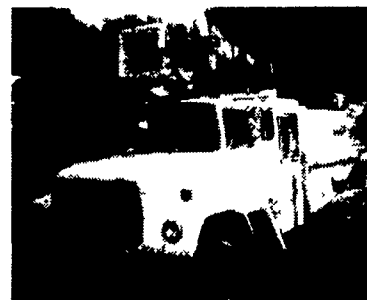
Rentals  
Available

GOOD  
USED EQUIPMENT

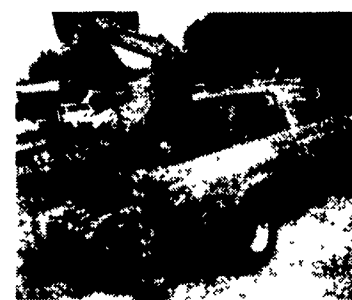
Huntingdon Valley, PA • 215-672-9667 • 1-800-543-3833 • Eddie

- 1980 International Tandem Axle wet line, 290 Cummins, 7 speed, inspected & ready to work, Make Offer.

- We have Line Trucks - 10 of Them
- Gas or diesel
- Can dig a hole from 8" to 36" diameter
- 11000 lbs. to 16,000 lbs. boom capacity
- Boom height 32 feet to 42 feet
- Prices start at \$3,500.00 MUST GO



Ford With Boom 16,000 Lbs Capacity, Digger With Auger, and Bucket Three Units In One



1988 Ford 350 Gas, Auto, Equipt With Backhoe, Priced To Sell



45' Bucket Truck Gas, Auto, Under CDL, Under \$10,000



Platform Truck 4'x10'x30' High, 360° Rotation, Under CDL, Diesel, Auto, Low Mileage



Under Bridge Inspector Truck For Painting or Sand Blasting, Call for Info.

**DIGGER DERRICKS/AERIAL BUCKETS/UTILITY EQUIPMENT**