

## St. Louis Feeder Cattle

Springfield, IL  
Thu Jun 1, 2000

USDA-IL Market News Service  
Farmers Livestock Marketing Assn  
auction at Greenville, IL Wed May 31, 2000

Cattle and calves: 740 head. Compared to last week, slaughter steers and heifers weak to 2.00 lower, most decline on Choice grades of both classes. Holstein steers fully steady. Supply mainly Choice and Select and Choice slaughter steers and heifers. Large supply of holstein steers.

Total Receipts this week: 740 Last week: n/r Last year: 920

**SLAUGHTER STEERS:** Choice 2-4 1000-1450 lbs 68.00-70.00, 1600-1700 lbs 64.00-66.00; Yield Grade 2-3 and Fancy 2-4 1050-1475 lbs 70.00-72.00, Prime 2-4 1250-1475 lbs 72.00-74.00, Select and Choice 2-3 1000-1425 lbs 65.00-68.00, Select 2-3 950-1400 lbs 60.00-65.00.

**HOLSTEIN STEERS:** Choice 2-3 1300-1700 lbs 63.00-66.00, Prime 2-3 1450-1750 lbs 66.00-67.00, Select and Choice 2-3 1100-1475 lbs 60.00-63.00; Select 2-3 1150-1500 lbs 54.00-60.00.

**SLAUGHTER HEIFERS:** Choice 2-4 975-1325 lbs 68.00-70.00, YG 2-3 and Fancy 2-4 1000-1300 lbs 70.00-72.00; Prime 2-4, 1175-1375 lbs 72.00-74.00. Select and Choice 2-3 925-1200 lbs 65.00-68.00, Select 2-3 900-1200 lbs 60.00-65.00.

**HEIFERETTES:** Few Medium and Large Frame 1025-1650 lbs 46.00-56.00.

**FEEDER CATTLE:** Compared with last week, feeder steers and heifers fully steady. Overall quality below last weeks level. Strong demand for light weight calves. Large buyer attendance.

**FEEDER STEERS:** Medium and Large Frame 1: Thin 150-200 lbs 125.00-155.00 200-300 lbs 105.00-130.00 300-400 lbs 96.00-106.00, fancy 106.00-108.00 400-500 lbs 93.00-103.00, fancy 103.00-110.00 500-600 lbs 86.00-94.00 600-700 lbs 82.00-90.00 700-800 lbs 79.00-85.00 800-900 lbs 75.00-80.00 Moderately Fleishy: 400-500 lbs 84.00-93.00 500-700 lbs 75.00-85.00 Several 900-1100 lbs 65.00-68.00 Large Frame 2 Holsteins: 300-400 lbs 80.00-88.00 400-500 lbs 75.00-80.00 15 head 725 lbs a 71.50 **FEEDER HEIFERS:** Medium and Large Frame 1: Thin: 200-300 lbs 100.00 120.00, fancy 120.00-135.00 300-400 lbs 90.00-101.00, fancy 101.00-104.00 400-

500 lbs 87.00-95.00, fancy 95.00-98.00 500-600 lbs 82.00-88.00 Moderately Fleishy: Several 500-700 lbs 68.00-71.00 700-900 lbs 64.00-68.00

**Cow/Calf Pairs:** Medium to Large Frame 3-10 yrs old with calf at side 590.00-695.00/pr.

**Slaughter Cows and Bulls:** 150 head. Compared to last week, slaughter cows mostly 1.00 lower. Bulls steady to 1.00 lower.

**SLAUGHTER COWS:** % Lean Weight Price Breakers 75-80 % 850-1200 lbs 37.00-41.00 Boners 80-85 % 850-1200 lbs 39.00-43.00 High Yielding 80-85 % over 1100 lbs 41.00-44.00 Lean 85-90 % 850-1200 lbs 35.00-38.00 85-90 % 750-850 lbs 32.00-35.00 85-90 % under 750 lbs 28.00-32.00

**BULLS:** Yield Grade 1-2 1200-2125 lbs 46.00-51.00, mostly 46.00-50.00; Low Yield 45.00-46.00. Yield Gr 1 1800-2050 lbs 50.00-52.00. Individual at 53.00.

## Grantsville Livestock

Grantsville, Maryland  
Report Supplied by Auction  
Saturday, June 3, 2000

**STOCK STEERS AND BULLS** 200-500 LBS. 50.00-142.00.

Lancaster Farming, Saturday, June 10, 2000-A17

**STOCK HEIFERS** 45.00-107.00.

**SLAUGHTER STEERS UP TO** 70.00, MEDIUM TO GOOD 45.00-58.00.

**HOLSTEIN STEERS GOOD** 36.00-52.00, LIGHT 35.00-55.00.

**SLAUGHTER HEIFERS GOOD TO CHOICE** 56.00-69.00, MEDIUM TO GOOD 50.00-55.50.

**BULLS HEAVY** 44.00-61.00, LIGHT 35.00-61.50.

**COWS UTILITY HOLSTEINS** 32.00-49.50, CANNERS 25.00-35.00, CULLS 22.00 AND DOWN.

**BOB CALVES 30.00 AND DOWN.** **HOLSTEIN BULL CALVES RETURN TO FARM 90-120 LBS. UP TO 170.00.**

**HOLSTEIN HEIFER CALVES RETURN TO FARM UP TO 300.00.**

**BEEF CROSS CALVES RETURN TO FARM UP TO 145.00.**

**HOGS TOP QUALITY UP TO 45.00, HEAVY UP TO 40.00, LIGHT 20.00-62.00, FEEDER PIGS BY HEAD UP TO 55.00.**

**SOWS 20.00-38.00.**

**MALE HOGS 12.00-30.00.**

**LAMBS 70-85 LBS. UP TO 105.00, 85-125 LBS. UP TO 94.00, 30-60 LBS. UP TO 90.00, CULLS UP TO 65.00.**

**SHEEP UP TO 30.00.**

**GOATS LARGE 60.00-125.00, MEDIUM 40.00-60.00, SMALL 20.00-40.00, ALL BY THE HEAD.**

Lean boneless beef in Omaha 1.00 to 2.00 lower, with a few instances at firm, Texas 1.00 to 3.00 lower; 85% 1.00 to 4.50 lower; 75% steady to weak; 65% steady. Demand moderate to good for heavy offerings. Beef trimmings generally steady on fairly good demand and moderate to heavy offerings.

**FOB OMAHA BASIS:** Chm Ln Lds Price Range Wtavg 90% fr 33 98.0 - 102.0 99.12 90% fz unq 85% fr 17 91.5 - 94.0 92.38 85% fz 75% fr 5 74.0 - 75.0 74.40 75% fz 65% fr 6 67.0 67.00 65% fz 50% fr 121 44.00 - 45.00 44.35 50% fz unq 50% bx unq Bull 92-94 unq

**FOB EAST TEXAS AND OKLAHOMA:** Chm Ln Lds Price Range Wtavg 90% fr 35 98.0 - 102.0 100.79 90% fz unq 85% fr 85% fz 75% fr 75% fz 65% fr 65% fz

**CAF NORTHEAST AREAS:** Chm Ln Lds Price Range Wtavg 90% fr 19 103.0 - 107.0 104.68 90% fz 85% fr 2 98.0 98.00 85% fz 75% fr 75% fz 65% fr 65% fz

**CAF WEST COAST BASIS Market for Week Ended: 6/02/2000** Chm Ln Lds Price Range Wtavg 90% fr 102.75 - 103.00 102.81 90% fz unq 85% fr 96.00 - 100.00 97.50 85% fz unq 75% fr unq 75% fz unq 65% fr 67.00 67.00 65% fz unq 50% fr 45.00 - 50.00 45.92 50% fz unq

ABCDE after quotes represents days since last actual market test. Quotes are dropped after 5 days of no test or before if they no longer reflect current market conditions.

## National Carlot Beef Report

Des Moines, IA  
Wed June 7, 2000

**USDA Market News**  
**USDA NATIONAL CARLOT BEEF REPORT** (includes major production areas in the Midwest and TX) as of 3:00 PM COW & BULL CARCASS FOB OMAHA Loads Reported.

Compared to Tuesday's 3:00 P.M. report: Cow and bull carcasses not established.

UT, brk 2-4 450/up 67.00 E UT, bng 1-3 400/up 71.00 E Cutter 1-2 350/up 74.00 C Bulls YG 1 500/up unq

**COW & BULL CARCASS CAF WEST COAST Loads Reported.**

Compared to last week:

Market for Week Ended: June 02, 2000 Lds Price Range UT, brk 2-4 450/up UT, bng 1-3 400/up 68.00 Cutter 1-2 350/up 68.00 Bulls YG 1 500/up

**BONELESS PROCESSING BEEF/BEEF TRIMMINGS 238.0 Loads Reported.**

## Special Monthly Greencastle Livestock Sale

Greencastle, Pa.

Report Supplied by Auction  
Friday, June 2, 2000

**STEERS:** 200-300 LBS. 95.00-125.00, 300-500 LBS. 99.00-115.00, 500-700 LBS. 77.00-107.00, 700-900 LBS. 70.00-88.00, 900-1000 LBS. 66.00-73.00.

**HOLSTEIN STEERS:** 200-400 LBS. 77.00-89.00, 400-500 LBS. 70.00-81.00, 500-700 LBS. 65.00-74.00.

**HEIFERS:** 200-300 LBS. 90.00-115.00, 300-500 LBS. 88.00-112.00, 500-700 LBS. 74.00-90.00, 700-900 LBS. 70.00-84.00, 900-1000 LBS. 65.00-70.00.

**BULLS:** 200-300 LBS. 94.00-125.00, 300-500 LBS. 90.00-114.00, 500-700 LBS. 75.00-92.00, 700-900 LBS. 60.00-71.00, 900-1000 LBS. 52.00-64.00.

## FREE COMMODITY MARKET NEWSLETTER

Whether your trade interests are grains or gold, Lehigh Valley Futures, Inc. has the knowledge and expertise to assist you in these markets. For a copy of our newsletter and/or a free trading kit, please contact:

## Lehigh Valley Futures, Inc.

5000 Tilghman Street Suite 249  
Allentown, PA 18104

1-800-543-8939 or 1-610-366-7979 Fax 1-610-366-9842

lvfuture@microserve.net

The risk of loss in trading futures and options on futures can be substantial. Futures and options trading may not be suitable for everyone. You should carefully consider the risks in light of your financial condition in deciding whether to trade.

## McElwee's Livestock

Home of Shippensburg Cownet  
3 Locations To Serve You

### Newburg

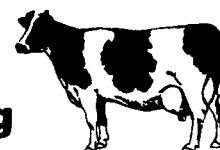
Mon. 9-4, Thurs. 9-2  
(717) 423-6869

### Woodsboro, MD

Tues. 10-2  
(301) 845-6232

### Chambersburg

Wed. 9-3  
(717) 267-3321



Receiving All Cows, Bulls, Steers, Calves  
Call For Daily Price Quotes

## Farmer Boy Ag Systems, Inc.

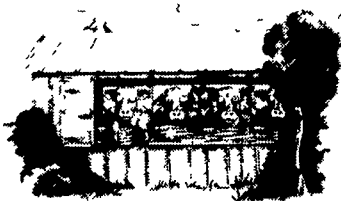
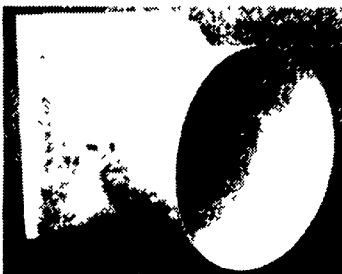
Your One-Stop Farm Supply Center

### VENTILATION

### Your Complete Fan Supplier

**AIRSTREAM** A Division of **GBI**  
"PERFORMANCE" SLANT-WALL BELT DRIVE  
FANS/CONE OPTIONAL  
LIFETIME-GUARANTEED FIBERGLASS COMPOSITE  
HOUSINGS / CONE OPTIONAL

See Us For A FREE Design & Cost of a  
**TUNNEL VENTILATION SYSTEM**  
To Fit Your Building



Cows see the lite..

### HERCULITE Heavy Duty Black-Out Tunnel, Dairy & Poultry Curtains

The experts, engineers and veterinarians agree - the best building is a naturally ventilated building. Herculite curtain systems offer state of the art, adjustable sidewalls. Even when closed, the curtains allow for natural light and provide a snug environment.

**AIRSTREAM** A Division of **GBI**  
**GALVANIZED FANS**

Economical line of galvanized fans are now available in various versions to fit any need or application that you may encounter.

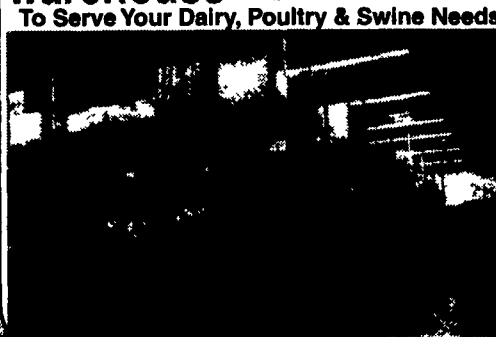
#### Direct Drive

- High efficiency "PSC" motor
- Upright motor mounts for unrestricted airflow
- Full variable speed capabilities

#### Belt Drive

- Available in 36" & 48" sizes
- High quality sealed "AVS" designed bearings.
- Twist link belt for ease of adjustment to keep at top performance.

fully stocked  
warehouse  
To Serve Your Dairy, Poultry & Swine Needs



### EXPERIENCED & KNOWLEDGEABLE SALES STAFF

### WATERING WATERING SYSTEM

by **Cumberland** A Division of **GBI**



- Water Flow Controlled
- Left or Right J-Type Connection
- Stainless Steel Shut off Ball
- Stainless Steel Seat
- 360° Trigger Pin
- Attracts Chicks

### 3' & 4' CRAFT PAPER FOR FEEDING

Same type used by larger integrators



### FEEDING

### FEED BINS

We assemble, deliver and set up bins on your farm.

- Weather tight die-formed roof
- Stronger engineered sidewalls
- Ground controlled fill caps
- Galvanized roll-formed legs
- Engineered leg braced systems
- Fast flowing hopper bottom

With **CORE AUGERS** and **Flex-flo™ AUGER SYSTEM** in 2 1/4" dia. to 5" dia.



See Us For All Your  
DAIRY - POULTRY - SWINE  
Remodeling & Equipment  
Installation Needs

6/10/00

Hours: Mon-Fri 6:30 to 5:30  
Sat 7:30 to Noon

## Farmer Boy Ag Systems Inc.

410 East Lincoln Avenue, Myerstown, PA 17067

Same Day Shipping

717-866-7565 • 1-800-845-3374

