

35

TRUCKS AND TRAILERS

1987 DM Mack C&C long wheel base, 285 eng., 6 spd., 44 rears. 1-800-839-3338.

'99 Dodge 3500 15 pass., 360 auto, PS, PB, PW, PDL, cruise, tilt, dual air, AM-FM cassette, privacy glass, 16,000 miles w/ balance of factory warranty, black, \$20,500. 717-733-2873

'97 Dodge 3500 12 pass., 318 auto, PS, PB, dual air, AM-FM cassette, dark blue, 74,000 miles, \$10,900. 717-733-2873

'99 Dodge 3500, 15 pass., 5.9 Magnum, auto, PS, PB, PW, PM, PDL, cruise, tilt, dual air, AM-FM cassette, privacy glass, dark green, 25,000 miles w/ balance of factory warranty, \$19,900. 717-733-2873

1987 Volvo White tractor, single axle or with tag axle, conventional, 320 Detroit, good cond. \$4800. 717-776-7725

MACK PARTS FOR SALE: Engines, blocks, heads & cranks, cabs, hoods & doors, trans, rears. ALL MACK PARTS. REASONABLE PRICES. MACK TRUCKS BOUGHT (complete or parts). 1-888-625-6485

'92 Dodge Dakota LE, long bed, 4x4, 3.9 Magnum, V6, 5 spd, PS, PB, AM-FM cass., Michelin radials, one owner, ex. cond., \$6,900. 717-733-2873

'94 Dodge LE 150 short whl. base, 8 pass., 318 magnum, auto, PS, PB, PW, PDL, cruise, tilt, air, AM-FM cassette, privacy glass, 61,000 miles, excellent condition, \$9,950. 717-733-2873

24' Gooseneck tri axle trailer, w/10' loading ramps, elec brakes to all axles, new tires, \$2350. 717-776-7113 after 7pm or leave message

17-22' Steel Flatbed Truck Body w/Strap Tiedowns & Bulkhead, Was block body, Good Condition, \$1200/obo. Delivery Possible. 717-867-4629 717-867-1269

Large turbo wing for double bunk sleeper w/all mounting hardware, very good cond, \$400 OBO. 610/562-5124.

'79 GMC Brigadier, 318 Detroit, 10 Spd., Fuller, 411 Rears, \$3,000/OBO. 717-933-4221

26' Alum Dump Trailer, 54" Sides, New Drums, Brakes 11R 24.5 Tires; 40' Flat Trailer w/Slider & Ratchet Binders, 11R 2.5 tires 908-439-2370

'90 Ford XLT E150, 5 pass. van, 302 EFI, auto, PS, PB, PW, PDL, cruise, tilt, dual air, new radials, 63,000 one owner miles, \$5,500. 717-733-2873

'99 Dodge 2500 12 pass. van, 318 magnum, auto, PS, PB, PW, PDL, cruise, tilt, dual air, 24,000 miles w/balance of factory warranty, white, excellent condition, \$18,500. 717-733-2873

'99 Ford XLT E150 club wagon, 8 psngr, V8, auto, PS, PB, PW, PDL, cruise, tilt, dual air, AM/FM cassette, dk blue, 13,000 mi w/bal of factory warranty, \$19,500. 717-733-2873

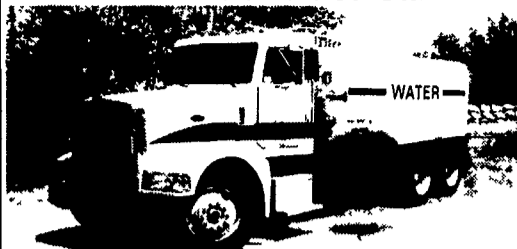
Southwest box trailer, 2-3 yrs old, ramps back & side doors, good for landscaping, price neg. 973-579-3595.

'94 Isuzu short bed pickup, 2.3, 4 cylinder, 5 spd, new radials, 58,000 miles, red, \$3,975. 717-733-2873

1997 green Chevy Tahoe, 4WD, 4-dr, fully loaded, like new, 42,000 mi, \$23,900/obo 610-269-7900.

STOCK GOOSENECK 16x6x6", STOCK BUMPER 16x6x6" 3 HORSE SLANT OPEN STOCK w/ dressing rm & rear tack. Used 2 horse 1986, call for pricing. New & Used trailers available. NETCO Trailer Sales, 410-838-1282.

Water Trucks For Sale



1988 PETE 375 4000 Gallon Water Trucks, 9 Spd., 38,000# Rears, CAT 3306 300 HP, (4) Spray, Hose Reel, Excellent. **\$38,000**
Other Trucks Available

973/347-1101 Ask for Jim



1994 VOLVO T/A TRUCK TRACTOR 60" Integral Sleeper Engine Detroit 60 Series 350HP, Fuller 9 Speed Trans, A/C, Air Ride Suspension **\$16,500**

Curry Supply Co., Curryville, PA 1-800-345-2829



1986 R Mack 237 Hp Mack Eng. Long Wheelbase Mack Duplex Trans Mack Rears Low Miles 36 000# GVW Mack Twin Screw Camelback Susp



1994 International 4700 175 Hp DT 408 Diesel 5 Speed Trans Full Disc Brakes Budd Wheels 22.5 Rubber PS AC 25 500# GVW 14 Supreme Reefer Body Folding Rear Drs Thermo King MD11 Unit Clean Truck!



1994 Ford CF7000 190 Hp 5.9 Cummins Diesel 6 Speed 24 Van Body w/Roll up Rear Door Side Door 26 000# GVW 58 000 Miles PS 11R22.5 Tires



1982 International F2275 Conv Cab 671 Detroit Diesel 10 Speed Road Ranger Trans Henderson Susp 11R24.5 Tires Budd Wheels PS PTO & Wet Line 53 000# GVW Low Miles Good Farm Truck!



1994 International 4900 DT 466 5 Speed Trans AC PS Full Hyd Disc Brakes 11R22.5 Tires 25 500 GVW 24 Body Side Dr Lift Gate Roll Up Rear Dr



1993 International 7.3 Diesel 5 Speed Trans PS AC Full Disc Brakes 79,000 Miles New Rubber Paint All The Bells! Looks New Runs New 25 500 GVW



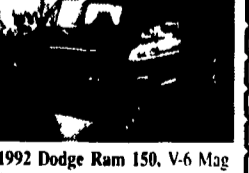
1994 International Cab & Chassis DT 466 210 HP Eng 6 Speed Trans AC PS Full Air Brakes Looks New & Runs New! 33 000 GVW



1995 Ford E350 460 HP Gas H D Auto 14 Ft Body Roll Up Rear Dr Nice Shape 10,900 GVW

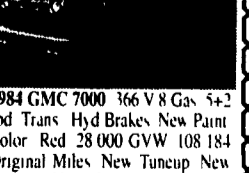


94 Ford CF 7000, 5.9 Diesel 6 Speed AC PS Air Brakes 26 000 GVW Air Ride 26 Body New Tires & Brakes



1992 Dodge Ram 150, V-6 Mag Eng Auto, New Brakes Tires & Shocks 75 616 Miles Excellent Like New!

Lots Of Used IVECO Parts
Best mechanical trucks in the area, plus the cleanest! We service what we sell. We offer a wide variety of dry van bodies, storage bodies and flatbeds. We also shorten & lengthen chassis to accommodate your truck body or flatbed.



1984 GMC 7000 366 V8 Gas 5+2 spd Trans Hyd Brakes New Paint Color Red 28 000 GVW 108 184 Original Miles New Tuneup New Service New Tires New Brakes PA State Insp

Phone 717-664-1696 CHARTER ENTERPRISES, LTD. 270 Hostetter Road, Manheim, PA

7511 Allentown Blvd. Harrisburg, PA 17112

AFFORDABLE CARS AND TRUCKS, INC.

717-652-1925

FAX 717-652-4888

www.affordablecarandtruck.com

75 TRUCKS IN STOCK

"You Gotta Believe!!"

Exit 27, Rt. 81; Rt. 22 East of Harrisburg; 3 Miles North of Hershey



96 Ford F250 4x4 Ext. Cab, 351 AT, AC, 2 Tone Loaded, Sharp Truck, 100K Mi. **\$13,995**

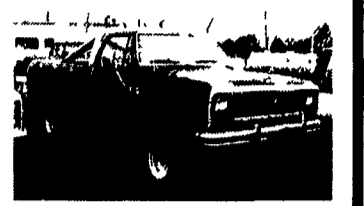
95 DODGE 2500 4X4, H.D. Laramie SLT, 8600 GVW, 360V8, AT, A/C, PW, PDL, Stereo, only 80,000 Mi, Flawless Vehicle **\$13,995**



94 Chev 1500 Silverado 4x4, Ext Longbed, All Black, 350 + Loaded, Extra Clean, 100K Mi. **\$12,995**



90 Ford F350 4x4 XLT AT, 460 V8 Gas, Stick, Super Clean & Sharp w/100K Mi **\$7,995 Ea.**



86 Dodge Power Ram 150 4x4, Only 70,000 Miles, V8, AT, Air, Mint Cond. **\$4,500**



96 Ford F250 XL 4x4 Ext. Cab, 7.3 Power Stroke w/Rare 5 Sp. & Loaded, Absolutely New Throughout, Guaranteed, 140K Mi. **\$17,899 \$16,995**



91 Ford F250 XLT Lariat 4x4, 351, AT, AC & Loaded Up, Black & Beautiful, Mint Cond. Truck, 100K Mi. **\$8,995**



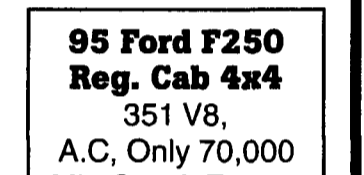
94 Dodge Ram 2500 Laramie SLT, 4x4 Cummins Turbo Diesel, AT, A/C, PW, PL, Loaded, Only 114K Mi. All Records, Excellent Shape **\$14,900**



90 Chev Suburban 4x4 Barn Doors, Dual A/C, 8-Pass, Super Nice Vehicle All 100K Mi., 4-Avail. 88-91 **\$7,500-\$10,000**



85 Ford E350 Hi-Top Conversion Van 6.9 Inter Diesel, Only 80K Mi., AT, Dual A/C and More, Superb Shape **\$6,495**



95 Ford F250 Reg. Cab 4x4 351 V8, A.C, Only 70,000 Mi., Cap & Extras, Beautiful Truck! **\$12,995**

CHEVROLET

GMC

Sutliff

GM PARTS

GENUINE GM PARTS FOR ALL GM VEHICLES

800-932-0284

Free Delivery Routes In 12 Counties In Central PA Call For Specifics

25 PARTS PROFESSIONALS TO SERVE YOU ENGINES - TRANSMISSIONS A.C. DELCO - SHEET METAL ALL IN STOCK AND PRICED RIGHT IF YOU NEED GM PARTS WE'VE GOT WHAT YOU NEED

SUTLIFF GM PARTS

13th & Paxton Harrisburg, PA



We Want Your Business

A GM Goodwrench Service Plus Dealer

The Plus means better.

CHEVY TRUCK

OLDS

BUICK

CADILLAC

PONTIAC