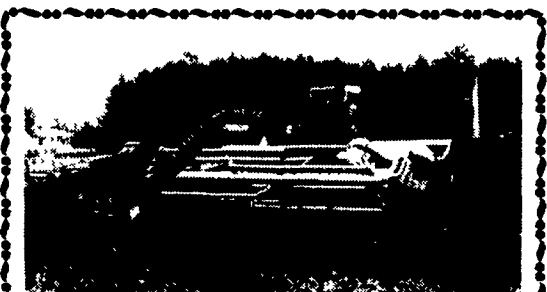


**CARBURETOR REBUILDING**  
 Farm & Industrial  
 U.S.A. & British  
 Rebuilding Engines  
 Water Pumps  
 6 Month Warranty  
 New Carburetors  
**FARMERS SERVICE**  
 330-482-4180



Tag #10741 NH 499 Haybine  
 w/Stub Guard & Hydro Swing  
**\$14,500.00**



Tag #10447 JD 1600 Haybine  
 Stub Guard Hydro Swing 12'  
**\$11,600.00**

**Charles S. Snyder, Inc.**  
 570/386-5945

Parting Out  
 Ac 190 series III land  
 handler running diesel  
 engine factory cab  
 1000 540 PTO, lots of parts  
 800C w/Cummins  
 Uni 709 4WD  
 Ford 4000 Diesel  
 Uni 844N corn head  
 Uni 770 Ear Corn Adapter from  
 Chopper to Corn Head  
 NI 800 Uni w/4WD  
 NI 708 2 wheeler  
 Some "Cheaper" Uni's  
 w/huskers  
 NI Uni gear boxes, trans,  
 final drives most anything  
 in parts

**R.B. Leaman**  
 717-399-4037



**CROP PROCESSOR KITS**

For New Holland 790, 782, 892  
 & 900 Forage Harvesters.  
 For More Information Call  
 Isaac H. Nolt Mfg.  
 337 North Maple Avenue, Leola, PA 17540  
 (717) 656-2758

**SOMEBODY'S TREASURE SALE**

- Great Ben loader off JD 3020, good condition, twin cylinder.....**\$500**
- IH 2000 good cond., used on JD 4020.....**\$500**
- 18' wooden kicker wagon, no running gear, fair cond.....**\$225**
- NI 3 pth fertilizer spreader, fair cond.**\$75**
- JD 640, ~~parts~~ parts, hay rake, 5 bar.....**SOLD!** **\$150**
- JD 105 parts combine, 14' grain head, 4RN corn head, new radiator.....**\$500**

**Call after 7 PM**  
**908-369-1009**  
 ask for Mark

**WORLD CLASS Lubricants**  
**PETROLEUM AND SYNTHETICS**

*The Choice of Champions*

- Engine Oils
- Hydraulic Oils
- Gear Oils
- ATF Fluids
- Greases

Available In Bulk Or Packaged  
 Fast Delivery Available

Ph # 717-733-6698  
 or 800-495-5823  
 www.excelperformanceproducts.com

227 Wood Corner Road  
 Ephrata, PA

**NOTICE**  
**EXTENDED PARTS DEPARTMENT STORE HOURS**  
**NOW THRU JUNE**  
 To Better Serve You During The Busy Planting Season  
**Mon., Tues., Thurs. & Fri. 7am-8pm**  
**Wed. 7am-6pm; Sat. 7am-3pm**

**BINKLEY-HURST BROS. INC.** 133 Rothsville Station Rd.  
 P.O. Box 0395  
 Lititz, PA 17543-0395  
 (717) 626-4705 1-800-414-4705  
 Fax 717-626-0996 www.binkleyhurst.com

**BINKLEY & HURST BROS. INC. IS YOUR SPECIALTY PLANTER DEALER!**  
 Ask For Merv and Place Your Order Today!

**MONOSEM Specialty Precision Planters**

- \* Proven Precision
- \* Fertilizer, Dry or Liquid
- \* Heavy-Duty 7"x7" Frames
- \* 2 Row to 12 Row Unmatched Accuracy In The Metering & Placement Of Corn, Sweet Corn, Edible Beans, Squash, Melons, Cucumbers, Sunflowers, Sorghum & More.

**PNEUMATIC PLANTER MODEL MS**  
 PLANT WITH PRECISION  
 RAW • UNCOATED • SEED  
 CARROTS • LETTUCE • ONION • ETC.  
 CALL FOR INFORMATION - Ask For Merv Nissly

**We Build Horse Drawn Models, Ask Us For Your Needs**

Check Out A Late Model Trade-In Monosem 6-Row with 20" Spacing with 3 Pt. Advanced Frame for Maximum Planting Performance (UM 3826)  
 Other Models & Configurations In Stock

**BINKLEY-HURST BROS. INC.** 133 Rothsville Station Rd.  
 P.O. Box 0395  
 Lititz, PA 17543-0395  
 (717) 626-4705 1-800-414-4705  
 Fax 717-626-0996 www.binkleyhurst.com

**BEHIND WITH PLANTING? CALL BINKLEY & HURST BROS. INC. TODAY, YOUR KINZE DEALER, AT 1-800-414-4705**  
 Ask About Financing & Quick Delivery.

**NEED AN EXTRA PLANTER TO GET MORE DONE FASTER? SEE BINKLEY & HURST TODAY FOR A PRE-OWNED!**  
 A Good Selection of Low Tag Economy Models And Several Like-New Reconditioned Units! For Example:  
 JOHN DEERE 7000 CONSERVATION 6-ROW with New Kinze Frame-Mounted No-Til Coulters, All New Yetter Row Units, JD Kinze Type Finger Pickup, Liquid Fertilizer, Reconditioned, Repainted, Like New! UM 4075.  
 JOHN DEERE KINZE TYPE Great Plains Heavy Duty 6-Row with Unit Mounted No-Til Coulters, Radar Monitor, Almost New, Ready To Plant! UM 4178.

- |   |  |  |
|---|--|--|
| 1) KINZE 6-ROW N 30" with No-Till Coulters & Liquid Fertilizer, Monitor, Markers and Rubber V Closing Wheels, PT Series UM 4404 | 7) JOHN DEERE MODEL 7000 8-ROW PLANTER, with Liquid Fert., Squeeze Pump, Double Disc Openers, No-Till Units, Monitor, Rubber V Closing Press Wheels, Insect, and Markers UM 4348 A Lot Of Planter For the Price! Come & See! | 11) GREAT PLAINS 6030, 6-Row 30" Spacing, Dry Fert with Unit Mount No-Till Coulters, Radar Monitor, Planted Approx 400 Acres, Almost New UM 4123 |
| 2) NEW IDEA/KINZE BUILT 4-ROW with Markers - \$3,600. UM 4424   | 8) JOHN DEERE 4-ROW, Only \$1,100. UM 4091   | 12) IH 800 6-Row Narrow w/Liquid Fert., 1000 PTO, Monitor - \$2,750, \$1,000 PRICE REDUCED - AS IS NOW ONLY \$1,480. UM 3708                     |
| 3) A.C. 4-ROW FRAME with No-Till Units & Insecticide - \$500. UM 4412   | 9) JOHN DEERE 6x30 7000 NO TILL. UM 4096   | 13) JOHN DEERE 4 ROW x 30 7000 PLANTER with Liquid Fertilizer Reconditioned - \$4,000. NOW \$3,500. UM3687                                       |
| 4) JOHN DEERE 7200 6-ROW NO TILL - \$7,900. UM 4444   | 10) MONOSEM NGT SPECIALTY PLANTER 6-Row 20" Spacing, 3 Pt Advance Frame, Vacuum, Markers UM 3826   | 14) KINZE 6-ROW BY 30" ROW SPACING PT Pull-Type Planter - \$6,500. UM 3913   |
| 5) DEUTZ ALLIS 385 4-Row No-Till with Liquid Fert \$2,500 OBO UM 4423   |  |  |
| 6) KINZE 2000 SERIES 6-ROW NARROW DOUBLE  |  |  |

**Before You Purchase A New JD Planter Consider a Good Deal On An (Almost New) Used John Deere Model 1750!**  
 UM 4283  
 Vacuum 6-Row Narrow 30", Liquid Fert with Squeeze Pump, Frame Mounted No-Till Coulters, Hinged Tongue, used 2 Seasons, Loaded

**NOTICE! IN STOCK FOR IMMEDIATE AVAILABILITY:**  
 Brand New Interplant Kits For Kinze 12-Row Model 2600 Series and 6-Row 2000 Series Planters. Ideal For Soybeans etc.  
**DON'T MISS A DEAL!**

Ask About Our On-The-Farm Service For Any Problems You May Be Experiencing With Your Planter!

**IN STOCK! The Ultimate in Grain Carts!**  
**KINZE**  
 High Capacity 840 Bushel Model In Stock  
 Check Out Their Superior Features!

**BINKLEY-HURST BROS. INC.** 133 Rothsville Station Rd.  
 P.O. Box 0395  
 Lititz, PA 17543-0395  
 (717) 626-4705 1-800-414-4705  
 Fax 717-626-0996 www.binkleyhurst.com