

FDA To Strengthen Pre-Market Review Of Bioengineered Foods

ROCKVILLE, Md. — The Food and Drug Administration (FDA) recently announced plans to refine its regulatory approach regarding foods derived through the use of modern biotechnology.

The initiatives unveiled stem in part from input received during FDA's public outreach meetings held late last year and build upon programs already under way at FDA to help ensure the safety of all foods.

"FDA's scientific review continues to show that all bioengineered foods sold here in the

United States today are as safe as their nonbioengineered counterparts," said Dr. Jane E. Henney, commissioner of food and drugs. "We believe our initiatives will provide the public with continued confidence in the safety of these foods."

FDA will publish a proposed rule mandating that developers of bioengineered foods and animal feeds notify the agency when they intend to market such products. FDA also will require that specific information be submitted to help determine whether the foods or animal

feeds pose any potential safety, labeling, or adulteration issues.

Although the current consultative process has worked well, and the agency believes it has been consulted on all bioengineered foods and feeds on the market, FDA will propose to strengthen this process by specifically requiring developers to notify the agency of their intent to market a food or animal feed from a bioengineered plant at least 120 days before marketing.

After reviewing the company's submission, FDA will issue a letter to the firm describing its conclusion about the regulatory status of the food or animal feed.

To make sure that consumers also have access to product in-

formation, FDA will propose that submitted information and the agency's conclusions be made available to the public, consistent with applicable disclosure laws, by posting them on the FDA Website for easy viewing.

In a related step, the agency will augment its food and veterinary medicine advisory committees by adding scientists with agricultural biotechnology expertise. FDA will use these committees to address overarching scientific questions pertaining to

bioengineered foods and animal feed.

FDA also announced plans to draft labeling guidance to assist manufacturers who wish to voluntarily label their foods being made with or without the use of bioengineered ingredients. The guidelines will help ensure that labeling is truthful and informative. To receive maximum consumer input, FDA will develop the guidelines with the use of focus groups and will seek public comment on the draft guidance.

PUBLIC AUCTION

OF VALUABLE REAL ESTATE, HOUSEHOLD GOODS, ANTIQUES, COINS, SHOP EQUIPMENT & TOOLS
Friday, June 9 & Saturday, June 10, 2000

Sale at 9:00 A.M. Both Days
Real Estate Sat., June 10 at 2:00 P.M.

Located at 146 Buckwalter Rd., Lanc Turn off Rt 340 (Old Phila Pk) across from Coleman's Ice Cream Store on Buckwalter Rd to sale East Lampeter Twp., Lanc Co., PA



Zoned R3 Residential
Lot - 121' Frontage, 220 Deep, 69' in Rear M/L

1-1/2 story frame w/vinyl siding, storm windows & doors, 1-car garage attached elect door opener, eat-in kitchen w/built-in cabinets dishwasher, elect 40" stove w/double self-cleaning oven, garbage disposal pantry broom closet & china closet 1/2 bath, den dining room, living room w/brick fireplace, foyer w/closet, open stairway porch

2nd floor 3 bedrooms w/closets full bath, hallway w/linen closet, storage balcony Full basement w/outside entrance, oil fired hot air heat central air, elect water heater, water softener, shower, well w/purifier, public sewer

28 x50' concrete block garage w/elect door opener, workshop w/wood burning furnace, elect & water storage above

For appointment call 394-8523 10% down day of sale, balance on or before Aug 10, 2000

To Be Sold Fri., June 9 at 9:00 A.M.

Two DeWalt 6 Radial Arm Saws DeWalt 12" Radial Arm Saw, 16" Delta Scroll Saw 2 Speed 6" Atlas Joints, Old Band Saw 6" Throat Craftsman 10" Table Saw Floor Mod Drill Press, Floor Stands Elect Drill Press Router Table, Elect Drills, Router Jig, Saber Saws Metal & Wood Planes, Stanley Planes #3-7, Stanley 45 & 55 Molding Planes, Sanders, Bell Sanders, Socket Set, Wood & Pipe Clamps, Files, Rasps, Gages, Emery Wheel, Brass Folding Rulers, Large Toolbox w/Drawers, Old Wooden Carpenter Tool Chests Craftsman Tool Chest Combo, Craftsman Air Compressor (Large) Chain Saw Cherry & Walnut Lumber, 20' Wooden 28' Aluminum Ext Ladders, 10' Stepladder, Simplicity 1421 S/P 20' Mower Choremaster Garden Tractor, Lawn Master Rototiller

New J.D. TRX24 Snowblower & Wood Chipper - like new, Metal & Fiberglass Pickup Toolboxes, Fishing Equipment, Gun - Wm Parkhurst 12 ga 9523 Double Barrel Hammer, many other items not mentioned

To Be Sold Sat., June 10

ATTN. FURNITURE SOLD FIRST AT 9:00 A.M.

5 pc Walnut Bedroom Suite Walnut Extension Table w/7 Boards, Walnut Buffet 3 pc Mahogany Parlor Suite, Washstand w/Drop handles Oak Chest of Drawers & Washstand, Mahogany Bowed Front Chest of Drawers Acorn Bed, Library Table, Dressers, Oak Chair Old Round Tilt Top Table Walnut Chest of Drawers w/Hanging Pulls Empire Bureau, Small Mahogany Drop Leaf Table Nite Stand Martha Washington Sewing Cabinet, 5 pc Waterfall Bedroom Suite 3 pc Maple Bedroom Suite, Box Spring & Mattress Center Tables End & Coffee Tables, Pressed Back & Cane Seated Chairs Plank Bottom Chairs Bookshelves Sofa, Recliner Wooden Wardrobe Rollaway Bed & Mattress Cedar Chests Flower Stands 1/2 Doz Dining Room Chairs, Piano Bench Wicker Fernery, Folding Screen Floor & Table Lamps, Pictures Reverse Painting 8-Day Shelf Clock, Weight Clock, Picture Battery Clocks, Wallace Nutting Print Small Wooden Box Record Cabinet Wall Display Case Mirror Picnic Table & bench, Porch Furniture 2 Seated Lawn Swing Croquet Set Schwinn 3 Speed Bike Sleds

APPLIANCES - Hotpoint Washer Whirlpool Dryer Philco 12 cu ft Freezer Portable TVs Window Air Conditioners, Leaded Hanging Light Elect Heater Hoover Upright Sweeper Cooking Utensils Flatware in Chest 3 Qt Alum Milk Kettle Bedding, Lenses Quilts - Old Robing Peter to Play Paul Sawtooth, Flower Garden Quilt Knotted Comforts, Pillows Books, Children's 12 Vol Happy Hollisters, Etc

GLASSWARE - Dinner Set for 12 Harmony House Japan, 17 pc Perfection Child's Tea Set in Original Box, 9 pc Tea Set, Daisy & Bulton & Fiorigold Glass Baskets, German Plates, Carnival, Nippon, Fostoria Glass, Compote, Sherbets, Goblets, Early Adams Plate, Large Punch Bowl Set, Canning Jars - Clear & Green 1/2 Pt Pensupreme Milk Bottle, Butter Print, Old ABC Pencil Box, Collector's Set of Classic Trucks, All Kind of Small Model Cars, American Flyer Train 293 Engine & Tender, Coal, Box, Milk, Unloader, Etc Transformer, Track in Boxes, Extra Pcs., Miniature Steam Engine Toys, Hess Trucks in Boxes, Training Van

COINS - 1998 Washington Mint \$100 Silver Proof, Silver Dollars, Halves Quarters Susan Anthony Dollars, Pennies, Indian Head Pennies Arrow Heads 2 Bulova Wrist Watches Many other items not mentioned

Terms by

PAUL R. & ELMA L. SPANGLER

Aucts
Robert E Jeffrey R & Michael L Martin 656-7770
AU000580L
Randall L Ranck
H Charles Benner Atty
Lunch Available No Out of State Checks

Public Auction Register

Closing Date Monday 5:00 P.M.

of each week's publication

Internet Sale Register will be updated every Sat. at 2:23 P.M.

JUNE

SAT JUNE 10 - 9AM Otsego County Area Municipal Equipment Auction, town of Otego Highway Dept, Route 7, Otego, NY Pick-ups & cars, trucks & trailers, equip, misc Roy Teitworth, auct

SAT JUNE 10 - 9:30AM Farm Auction tractors & farm equip farm & butchering related items

From I-81 take exit 20 (Spring Mills) E from exit and turn right at stop sign onto Rt 11 S, on Whitings Neck Rd Roger & Shirley W Barnhart, owners Lemaster's Auct

SAT JUNE 10 - 10AM Furniture, household goods, tools 750 Lakehurst Rd., Browns Mills, NJ Allen's Auction Service

WHO'S "got milk?®"



For boys, milk consumption is highest at age 8, reaching 35 gallons a year. For girls, peak milk drinking is at age 6 when they consume 29 gallons a year.

Source Dairy Management Inc

OUR MANURE DOES STINK!

Used/Rental Liquid Manure Equipment

SPREADERS

- (2) Houle 6,300 Gal. w/28Lx26, Brakes, Lights, Etc. Both Are Rental Units Call For More Info
- Balzer 3350 Vacuum.....\$15,900
- Better Built 1100 gal. Vacuum\$1,750
- DeLaval 3,000 gal., Good Shape.....\$3,253
- 1998 Knight 8024, 19Lx16.1 Tires, Needs Some Work.....\$7,450

PUMPS

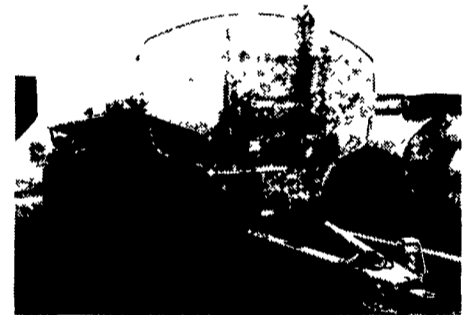
- (2) Houle Maxi Pumps, 28"..... CALL
- Houle Irrigation Pumps, on trailers, hyd. primers..... CALL
- Houle 32' and 42' Agi Pumps. \$7,500 to \$10,000
- 1998 Houle 8/12' Super Pump, Rental Unit.....\$6,950
- Husky 40' Lagoon Pump, Good Condition.....\$5,000

MISCELLANEOUS

- Rubber Tire Scrapers, 3 pt. & Skid Steer; Also Push Blades
- (2) CADMAN 2625 Hard Hose Reels..... CALL

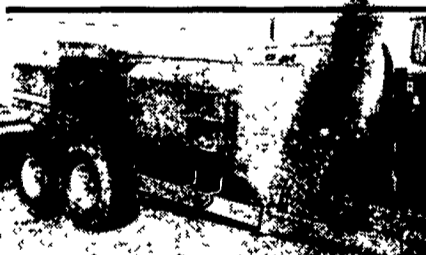
Check Our Website For Updated Equipment
www.MidAtlanticAgri.com

This Week's Special

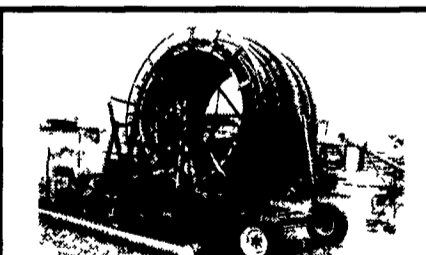


2000 HOULE

3,850 Gal., w/23.1x26 Brakes, Lights, 1/4" Steel, Rental Unit
CALL



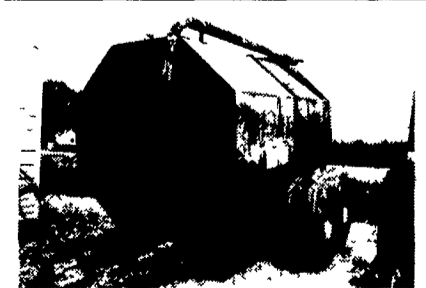
WIC 4,000 Gal. w/50x21.20
Airplane Tires, Tank Needs Some Patching.....\$5,250



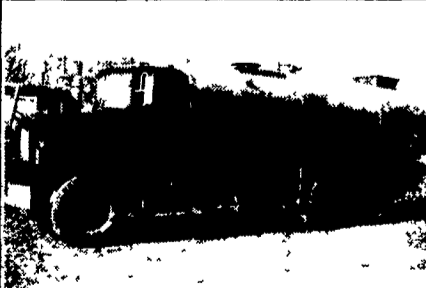
Long 1560 Irrigation Reel, 3-3/4" x 1200' Hose, Engine Drive, Manure or Water.....\$7,175



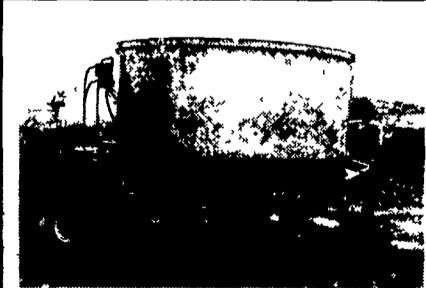
New Idea Model 3222 with Lid, Excellent Shape, 16.5x16.5 Tires \$10,950 Compare to New Price!



WIC 3600 Gal. 21.5x16.1 Tires, Needs Paint but Tank is Solid.\$3,350



DM Mack 4,500 Gal. Tank, Ready To Work..... CALL



Kidd 6-10 Bale Chopper, Works in Dry Hay or Straw.....\$4,950

Top Volume



Dealer
In North America

4019 Ashville Rd.,

Quarryville, PA 17566

800-222-2948 • 717-529-2782

MID-ATLANTIC
agrisystems



Alley Scrapers • Barn Cleaners • Piston Pumps • Agitators • Flush Valves • Flush Pumps • Irrigation Pumps • Separators • Lagoon and Pit Pumps • Tank Spreaders • Transfer Pumps • Irrigation Pumps • Agitators • Flush Valves • Flush Pumps