

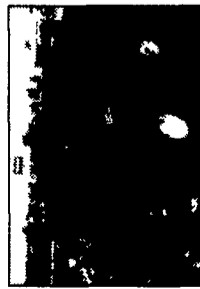
WITH ANY USED COMBINE PURCHASED FROM HOOBER AFTER MAY 27, 2000! SEE HOOBER A SALESMAN FOR DETAILS

AFFORDABLE ROTARY COMBINES

Get the Industry Standard Rotary Design. USED.



WAS \$49,000, IS \$45,000
C 31080 1980 CH 1680 2WD
 4040 Hours Diesel, Sp Rotor, Rock Trap, GLM, Deluxe Seat, Field Tractor, Chaff Sprdr, Tires: Steering -14.9x24, Drive -30.5x32, Metal/Cab Int - Good



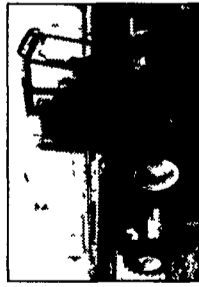
WAS \$50,500, IS \$35,000
A 16903 1989 CH 1660 2wd
 Diesel Combine, 3194 hours Tires: Drive - 26.5 x 32, Steering - 14.9 x 24, Standard Rotor, Rock Trap, Grain Loss Monitor, AFS



WAS \$38,500, IS \$18,000
A 11001 1983 IH 1480 Combine,
 5127 Hours, Tires: 30.5 x 32 Front, 18.4 x 16 Rear, Specialty Rotor, Good Sheet Metal, Hooper Uptime Has Been Done



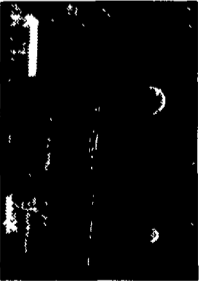
WAS \$57,000, IS \$46,000
B 17120 1990 JD 9600 2WD,
 Feeder Reverser, Auto Hdr Cntrl, Deluxe Seat, Radio, Chopper, 2wd, Tires: Drive - 30.5x32, Steering - 18.4x26, 3175 Hours



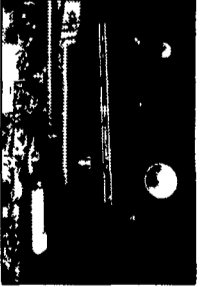
WAS \$69,000, IS \$62,000
B 18454 1993 CH 1666 4WD SP
 ROTOR, 2722 Hours, Rock Trap, Fur Rev, Gln, Deluxe Seat, Chaff Sprdr, Extra Concave, Uptime, A/B, Beater, Tires: Steering - 14.9x24, Drive - 30.5x32



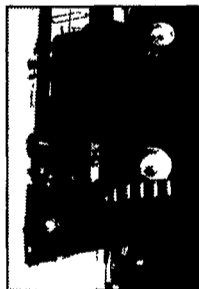
WAS \$39,000, IS \$29,500
A 13011 1986 CH 1640 2WD
 Combine, 3105 Hours, Tires: 23.1 x 26 Front, 11.00 x 16 Rear, Cab w/A/C, Heat, Deluxe Seat, Hooper Uptime Service Has Been Done



WAS \$32,500, IS \$26,800
C 30220 1982 IH 1460 2wd
 Combine, Specialty Rotor, Grain Loss Monitor, Tires: Drive - 28x26, Steering - 18.4x16.1, Rebuilt Trans, New Hydro, 4125 Hours



WAS \$42,000, IS \$25,000
A 15098 1984 IH 1460 2WD,
 2277 Hours, Standard Rotor, Chopper, Rock Trap, Grain Loss Monitor, Tires: Drive - 30.5 x 32, Steering - 18.4 x 16.1



WAS \$93,000, IS \$88,000
B 18830 1996 CH 2166 2WD
 Combine, 1200 Hours, Specialty Rotor, A/S Option, Chopper, Field Tractor, Chaff Sprdr, Extra Concave, Tires: Steering - 18.4x26, Drive - 30.5x32, Paint/Metal - Ok



WAS \$23,900, IS \$18,000
B 16020 1984 IH 1440 2WD,
 4078 Hours, Standard Rotor, Auto header Control, Tires: Drive - 24.5 x 32, Steering - 18.4 x 16.1



WAS \$126,900, IS \$105,000
B 22320 1996 CH 2188 4WD,
 1050 Hours, Field Tractor, Specialty Rotor, Rock Trap, Grain Loss Monitor, Tires: Drive - 30.5 x 32, Steering - 18.4 x 26



WAS \$35,000, IS \$28,000
B 15394 1987 JD 7720 4WD,
 2631 Hours, Chopper, Rock Trap, Diesel, Hydro, Tires: Drive - 30.5 x 32, Steering - 16.9 x 26



WAS \$79,900, IS \$59,000
A 22232 1994 CH 2188 2WD,
 2744 Hours, Rotor Spec, Rock Trap, GLM-Ag Leader, Deluxe Seat, Field Tractor, 2 Sp Hydro, Chaff Sprdr, Extra Concave, Tires: Drive - 30.5x32, Steering - 14.9 x 24



WAS \$135,000, IS \$112,000
B 17357 1997 CH 2188 4WD,
 916 Hours, Specialty Rotor, Chopper, Rock Trap, Tires: Drive - 30.5L x 32, Steering - 18.4 x 26



WAS \$62,500, IS \$49,000
A 27275 1990 CH 1680 2WD,
 3741 Hours, Field Tractor, Specialty Rotor, Rock Trap, 2 Speed Hydro, Tires: Drive - 30.5 x 32, Steering - 14.9 x 24



WAS \$59,500, IS \$49,500
B 17353 1990 CH 1680 2WD,
 2726 Hours, Rock Trap, Feeder Reverser, Tires: Drive - 30.5 x 32, Steering - 14.9 x 24



WAS \$95,000, IS \$79,000
A 22310 1995 CH 2188 2WD
 Combine, 1979 Hours, Specialty Rotor, Rock Trap, GLM, Chopper, Field Tractor, Tires: Steering - 14.9x24, Drive - 30.5x32, Hooper Uptime Service Has Been Done



WAS \$96,500, IS \$89,900
C 17483 1995 JD 9500 2WD,
 2111 Hours, Sidehill, Rock Trap, Grain Loss Monitor, Diesel, Hydro, Tires: Drive - 30.5 x 32, Steering - 14.9 x 24



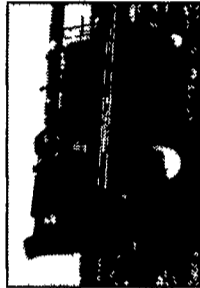
JUST TRADED \$89,500
A 23052 1996 CH 2166 4WD,
 883 Hours, Field Tractor, Specialty Rotor, Grain Loss Monitor, GPS, Grain Loss Monitor, Tires: Drive - 30.5 x 32, Steering - 18.4 x 26



Sale Price \$6,500
C 18812 1977 IH 715 2WD,
 3450 Hours, Chopper, Grain Loss Monitor, Weight Frame, Tires: Drive - 23.1 x 26, Steering - 18.0 x 15



WAS \$85,000, IS \$79,500
B 18502 1995 CH 2188 Combine,
 1866 Eng Hours, 1310 Rotor Hours, Specialty Rotor, Rock Trap, Chopper, Field Tractor, 2 Sp Hydro, Tires: 30.5 x 32, 14.9 x 24



WAS \$21,000, IS \$15,000
B 17866 1982 IH 1460 2WD,
 4500 Hours, Standard Rotor, 2 Speed Hydro, Tires: 28L x 26, Diesel, Rotary Air Screen



RECENT TRADE \$42,500
C 31143 1987 CH 1660 2WD,
 3666 Hours, Field Tractor, Standard Rotor, Rock Trap, Grain Loss Monitor, Tires: Drive - 30.5 x 32, Steering - 18.4 x 16



WAS \$49,000, IS \$29,000
A 21511 1987 CH 1680 2WD,
 5300 Hours, Standard Rotor, Grain Loss Monitor, Tires: Drive - 30.5 x 32, Steering - 18.4 x 16.1

UNDER \$10,000		
NO.	YEAR	MAKE DESCRIPTION
A 22861	1975	Grey Cab, Fair Paint
A 22870	1976	NH TR70, 3675 Hours, w/960 13' platform & 4R 30" head
A 22886	1979	NH 750 2WD, Rock Trap, Chopper
C 18812	1977	IH 715 2WD, 3450 Hours, Chopper, GLM, Weight Frame
B 18599	1977	IH 915 2WD, Diesel, Corn/Soybean Special, Rebuilt

\$10,000 - \$20,000		
A 22639	1978	IH 1460 2WD, 3391 Hours, Std Rotor
B 18597	1984	IH 1440 2WD, 3912 Hours, Spec Rotor, Beater, GLM
B 18509	1983	IH 1480 2WD, 3300 Hours, Std Rotor, auto hdr ctn
B 18618	1980	IH 1460 2WD, 3759 Hours, Diesel, Rotary Air Screen
A 20240	1984	IH 1480 2WD, 3607 Hours, Spec Rotor, FDR Rev
A 22994	1985	JD 6620, 5700 Hours, Sidehill, Rock Trap, GLM, Diesel

\$20,000 - \$50,000		
B 18800	1984	IH 1460 2WD, Spec Rotor, Chopper, GLM, FDR Rev
C 21934	1982	IH 1420 2WD, 2200 Hours, Std Rotor, auto hdr ctn, Nice
B 15394	1987	JD 7720 4WD, 2631 Hours, Chopper, Rock Trap, Diesel
A 13011	1986	CH 1640 2WD, 3105 Hours, Std Rotor, FDR Rev
A 18865	1991	CH 1660 2WD, 3500 Hours, Spec Rotor, GLM
C 31080	1990	CH 1680 2WD, 4040 Hours, Field Tractor, Spec Rotor

\$50,000 - \$90,000		
B 18545	1989	CH 1680 4WD, 2368 Hours, Field Tractor, Chopper
A 22232	1994	CH 1688 2WD, 2744 Hours, Field Tractor, Spec Rotor
B 18454	1993	CH 1666 4WD, 2722 Hours, Spec Rotor, GLM, Chaff Sprdr
A 22310	1995	CH 2188 4WD, 1979 Hours, Field Tractor, Spec Rotor
A 23020	1997	CH 2166 2WD, 904 Hours, Field Tractor, Spec Rotor
C 17483	1995	JD 9500 2WD, 2111 Hours, Sidehill, Rock Trap, GLM

\$90,000 +		
B 18700	1996	CH 2188 2WD, 1298 Hours, Spec Rotor, Chopper
B 22320	1996	CH 2188 4WD, 1050 Hours, Field Tractor, Spec Rotor
A 23014	1998	CH 2366 4WD, 774 Hours, Field Tractor, Spec Rotor
B 17357	1997	CH 2188 4WD, 916 Hours, Spec Rotor, Chopper
A 22970	1997	CH 2388 2WD, 1029 Hours, Field Tractor, Spec Rotor
A 22990	1997	CH 2388 2WD, 876 Hours, Field Tractor, Spec Rotor

Financing Available On All Used Combines From Hooper

1) Interest Waiver Till 1/1/01 with Balance at Standard Rate for Up to 60 Months Total
 OR
 2) 4.9% for 12 Months Followed by Standard Rate for Up to 48 Months
 OR
 3) Fixed Low Rate Financing of 7.75% for 36 Months
 Fixed Low Rate Financing of 8.5% for 48 Months
 Fixed Low Rate Financing of 8.75% for 60 Months

FINANCING OPTIONS SUBJECT TO CHANGE WITHOUT NOTICE

FARM MACHINERY RUNS BETTER WITH HOOBER'S ADVANCED MACHINERY SERVICE

ADVANCED MACHINERY SERVICE
HOOPER INC
 THREE LOCATIONS
A INTERCOURSE, PA 800 732-0017
B MIDDLETOWN, DE 800 341-4028
C McALISTERVILLE, PA 800 433-6679

All New & Used Products Backed By Hooper Parts & Service
 VISIT OUR WEBSITE: www.hooper.com



Authorized UPS Station

