



MAY 29-JUNE 4, 2000

NEW MOON, JUNE 2.

THE RIGHT TO VOTE

Strange as it may seem today, until June 2, 1924, Native Americans born in this country were not granted citizenship. That changed with a vote by Congress in 1924, but even then, many Native Americans did not gain the right to vote for another two decades or more. Voting rights were a matter of state law, and some states—Maine, for example—did not grant voting rights to Native Americans until 1948. Native Americans might have had the right to vote within their tribal settlements, but statewide elections were closed to them. Even as the schools established for Native American children pushed assimilation, burying much of the culture and lore of Native American families, the greatest American institution of all—the vote—was withheld.

Politics is applesauce.

—Will Rogers

TIP OF THE WEEK

Time to teach children about nature's toys: grass whistles, popping leaves, clover blossom necklaces, and maple leaf crowns.

APPLE BREAD

1/2 cup butter
1 cup sugar
1 egg, beaten
1 cup chopped, peeled apples
1/2 cup chopped dates
1/4 cup chopped nuts
2 cups all-purpose flour
1 teaspoon baking soda
1/2 teaspoon salt
1/2 teaspoon cinnamon
1/2 cup sour milk (or add 1/2 teaspoon vinegar to regular milk)

Cream together butter and sugar and beat until light. Add egg and blend, then stir in fruit and nuts. Combine dry ingredients, and add alternately with milk. Pour into a greased loaf pan and bake in a preheated 350°F oven for about an hour.

Makes 1 loaf.

www.almanac.com

THE OLD FARMER'S WEATHER PROVERBS



The more thunder in May, the less in August and September.

A dry May and a leaking June/ Make the farmer whistle a merry tune.

Look at your corn in May, And you will come weeping away; Look at the same in June, And you'll come home in another tune.

Belleville Livestock

Belleville, Pa.

24 May 2000

Report Supplied By PDA

CATTLE 2505 [PDA] [Supply included 412 cows and heifers in the Dairy sale]

SLAUGHTER STEERS couple Select 1-3 63 00-66 00

HOLSTEIN STEERS few Select 1-2 48 25-53 00, one Standard 2 45 00

HEIFERS couple Choice 2 4 1250-1300 lbs 66 75-68 25, one Select 2 66 00

COWS few Breakers 75-80% lean 38 00-44 00, few low dressing to 35 50, Boners 80-85% lean 37 75-43 00, Lean 85 90% lean 33 00 40 25 Shells down to 28 50

BULLS few Yield Grade 1 1285-2040 lbs 50 00-51 00, one Yield Grade 2 2070 lbs 47 00

FEEDER CATTLE STEERS Medium and Large 2 285 555 lbs 63 00 76 00 one 760 lbs 70 00 HEIFERS Large 2 450-530 lbs 62 00 66 00, one 78 00 one Medium 1 680 lbs 68 50 BULLS one Medium and Large 2 235 450 lbs 51 50-63 00, few 500-1020 lbs 47 00-55 50

CALVES 82 Vealers Standard and Good 70-90 lbs 25 00-30 00, couple Utility 55 lbs 10 00-15 00

FARM CALVES No 1 Holstein bulls 95 125 lbs 165 00-205 00 80 90 lbs 110 00 140 00, No 2 80-120 lbs 100 00-172 50, No 1 Holsteins heifers 80-100 lbs 295 00 312 50, No 2 Holsteins heifers 70-100 lbs 140 00-160 00

Few beef type bulls and heifers 85-105 lbs 120 00 170 00

HOGS 49 BARROWS AND GILTS 45 50% lean 260-265 lbs 44 25-44 50, 45 50% Lean 235-265 lbs 42 00 43 50 40 45% lean 275 290 lbs 35 00-40 00

SOWS few US 1-3 380-480 lbs 28 00 30 00, 515 660 lbs 32 00-34 00, couple Medium 485-515 lbs 10 00-15 00 Boars one 305 lbs 20 00

FEEDER PIGS 110 US 1-3 20-35 lbs 19 00-37 00, 40-65 lbs 41 00-75 00 --- per head

SHEEP 35 SLAUGHTER LAMBS Choice 40-65 lbs 80 00-112 00, 70-105 lbs 80 00-97 00

SLAUGHTER SHEEP 21 00-35 00

GOATS 26 [ALL GOATS SOLD BY THE HEAD] Large Billies and Weathers 62 00-78 00, few Medium Billies 51 00-53 00, Large Nannies 35 00-65 00, Small Kids 11 00-33 00

HOLSTEIN DAIRY COWS 850 00-1450 00, one 1535 00 --- per head

Leesport Livestock

Leesport, Pa.

24 May 2000

Report Supplied By PDA

CATTLE 285 [PDA] [Supply included 117 steers and heifers 121 cows, 26 bulls and 21 feeder cattle] Compared with last week's sale, sl steers steady to 1 00 higher, Holstein steers mostly steady cows mostly steady with lean cows 1 00 higher, heifers and bulls steady

SLAUGHTER STEERS High Choice and Prime 2 4 1220-1400 lbs 74 00-76 00 Choice 2-3 1130-1395 lbs 68 00-74 00 Select 1-3 64 00-71 00, Standard 1-2 55 00-58 25

HOLSTEINS High Choice and Prime 2-3 1380-1640 lbs 63 75-66 50 Choice 2-3 1230 1695 lbs 62 75-64 00, return to farm 58 00-59 00, Select 1-2 57 00-62 25 few Standard 1-2 52 00-56 00

HEIFERS one Prime 3 1185 lbs 72 50 one Choice 3 1205 lbs 69 00 few Select 1-3 56 00-67 00, one Standard 2 49 50

COWS Breakers 75-80% lean 40 25-44 50 one 48 25 Boners 80 85% lean 38 00 44 25 Lean 85-90% lean 33 00-45 25 Shells down to 27 50

BULLOCKS couple Choice 2-3 60 50-61 50

BULLS Yield Grade 1 1155-2185 lbs 51 75-56 50 Yield Grade 2 1460-2400 lbs 48 00 52 75

FEEDER CATTLE STEERS couple Large 1 925 & 945 lbs 71 00-73 00, couple Medium 2 315 365 lbs 100 00-107 50

HEIFERS few Medium and Large 1 750-905 lbs 66 00, few Medium and Large 2 850 935 lbs 50 00-53 00, BULLS

one Large 1 495 lbs 85 00, few Medium and Large 2 420-770 lbs 53 00-80 00

CALVES 152 VEALERS one Choice 145 lbs 145 00, Good 240-250 lbs 95 00 115 00, Standard and Good 80-110 lbs 50 00-90 00, Utility 70-100 lbs 27 50-50 00

FARM CALVES Holstein bulls 10 00 higher, Holstein heifers mostly steady No 1 Holstein bulls 90-120 lbs 175 00-205 00, few 80-85 lbs 80 00-115 00, No 2 80-120 lbs 185 00 175 00, No 1 Holstein heifers 90-115 lbs 270 00 315 00, No 2 80-120 lbs 97 50-265 00

Beef type bulls and heifers 85-115 lbs 100 00 150 00

HOGS 67 Barrows and gilts and sows 1 00 to 2 00 lower BARROWS AND GILTS 45-50% lean 225-270 lbs 42 75-43 50, 40-45% lean 285 lbs 40 75

SOWS 3 00-5 00 lower US 1-3 340-495 lbs 30 50-34 50, 515-550 lbs 32 50-38 00

Boars 430-625 lbs 12 50-15 00 FEEDER PIGS 73 One US 1-3 20-30 lbs 145 00-190 00, 30-45 lbs 90 00-130 00, 55-90 lbs 72 50-85 00 --- per cwt

SHEEP 16 Slaughter lambs 20 00 to 30 00 lower SLAUGHTER LAMBS Choice 25-40 lbs 90 00-140 00 Good and Choice 20 25 lbs 65 00 75 00

SLAUGHTER SHEEP couple 15 00 24 00

GOATS 21 [All sold by the head] Medium Billies 55 00-85 00, Medium Nannies 52 50-85 00, Large Kids 32 00-45 00, couple Small 20 00 28 00

New Holland Horses

New Holland Sales Stables

Report Supplied by Auction

Monday, May 22, 2000

TOTAL HEAD HORSES AND MULES 251. MARKET STEADY.

WORK HORSES 910.00-1400.00.

DRIVING HORSES 575.00-1025.00.

RIDING HORSES 485.00-975.00.

BETTER RIDING 1035.00-1400.00, 1 AT 1625.00.

PONIES 160.00-435.00.

LARGE PONIES 475.00-550.00.

FEW 660.00-860.00.

COLTS 250.00-550.00.

FREE COMMODITY MARKET NEWSLETTER

Whether your trade interests are grains or gold, Lehigh Valley Futures, Inc. has the knowledge and expertise to assist you in these markets. For a copy of our newsletter and/or a free trading kit, please contact:

Lehigh Valley Futures, Inc.

5000 Tilghman Street Suite 249

Allentown, PA 18104

1-800-543-8939 or 1-610-366-7979 Fax 1-610-366-9842

lvfuture@microserve.net

The risk of loss in trading futures and options on futures can be substantial. Futures and options trading may not be suitable for everyone. You should carefully consider the risks in light of your financial condition in deciding whether to trade.

GREENCASTLE LIVESTOCK MARKET, INC.

Off Exit 3 of I-81

GREENCASTLE, PA. 17225

SALES EVERY

MONDAY at 2:00 P.M.

THURSDAY at 1:00 P.M.

SPECIAL SALE
FRIDAY, JUNE 2 - 7:15 P.M.
400-500 HEAD

HAY & STRAW SALE

Held at 11:30 A.M.

POULTRY, EGGS, RABBITS

1st Friday Night Every Month at 7:15

POULTRY, EGGS, RABBITS

& PRODUCE SALE

Every Wednesday at 6:30 P.M.

Charles "Jim" Metz

OFF. MGR.

Res. (301) 739-4470

Jeffrey S. Craig

OWNER

Res. (717) 532-5224

OFFICE - 717-597-2171



WB95PZ Zimmerman Water Bowl

The Unlimited Water Supply For Your Cows!



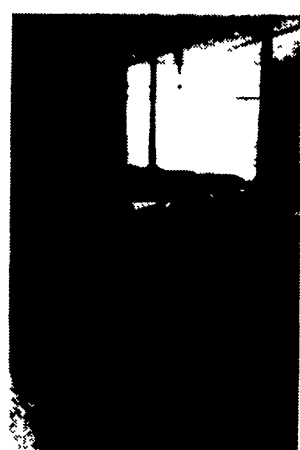
Low maintenance
noncorrosive Delrin valve
is self cleaning & simple to operate!

- 12" in diameter & 8" deep.
- 3 gallon capacity- 6 times that of other bowls!
- Fast recovery- 3 gallons per minute at 40 psi.
- PVC construction- guaranteed unbreakable, inhibits bacterial growth.
- With nonrestrictive splash guard.
- Cleaner- water fill located at bottom.
- Bottom drain- for easy cleaning.
- Adjustable water level.

**MORE WATER MEANS
MORE MILK...NATURALLY!**



Heavy duty steel clamp & mounting bracket totally supports bowl.



Now you can give your cows the water they need to produce more milk. With the Zimmerman Water Bowl, you can do it at no extra cost!

The bowls are designed to comply with known federal and local requirements when installed properly.*

Cows are not designed to push a paddle when they need a drink. This unique watering system provides a continuous supply of fresh water in the way nature intended cows to drink. With a large capacity, fast recovery and a guarantee against breakage, the Zimmerman Water Bowl will revolutionize the way you water your herd.

*All bottom fill bowls require that approved back flow prevention devices be installed in potable water supply lines

Install in new or remodeled facilities or in most existing barns on manger or stall side!

Two Coat Process!



Added Value With Our 2 Coat Process!

- 1 Five step metal preparation, including iron phosphate conversion coating, to enhance adhesion & prevent undercoat corrosion
- 2 Zinc rich epoxy powder undercoat
- 3 TGIC polyester powder top coat, baked at 400° to fuse costs, forming a cross link molecular bond

Paul B. Zimmerman, Inc.

295 Woodcorner Rd. • Lititz, PA 17543 • 717/738-7365

1 mile West of Ephrata

Call or write for additional information
& the name of your nearest dealer

Hours Mon-Fri 7-5
Sat. 7-11