

Aberdeen Livestock

Churchville, Md.

Report Supplied by Auction
Wednesday, May 24, 2000

SLAUGHTER STEERS: 1.00 LOWER. CHOICE 2-4 1100-1400 LBS. 73.00-76.00; SELECT AND LOW CHOICE 1000-1500 LBS. 66.00-71.00; HOLSTEIN STEERS HI CHOICE AND PRIME 1250-1400 LBS. 66.00-67.00; CHOICE 1200-1500 LBS. 63.00-65.00; SELECT ALL WEIGHTS 54.00-59.00.

SLAUGHTER HEIFERS: 1.00 LOWER. CHOICE AND PRIME 950-1300 LBS. 71.00-73.50; SELECT ALL WEIGHTS 900-1400 LBS. 62.00-66.00.

COWS: 2.00 HIGHER. BRK. UT AND COMM 2-4 BULK 42.00-45.00; HI DRESSING 47.00-50.00; CUTTER AND BONING UT. 36.00-39.00; HI DRESSING 41.00-45.00; CANNERS AND CUTTERS 34.00-38.00; LOW DRESSING 33.00-DOWN.

BULLS: 3.00 HIGHER. ALL WEIGHTS 1100-1900 LBS. 51.00-59.00. **VEAL CALVES:** STEADY. CHOICE AND PRIME 200-400 LBS. 74.00-86.00; HI GOOD AND LOW CHOICE ALL WEIGHTS 69.00-73.00.

FARM CALVES: STEADY. HOL BULLS 100-125 LBS. 190.00-221.00; HOL BULLS 85-95 LBS. 140.00-190.00; HOL HEIFER CALVES 100-120 LBS. 240.00-310.00; SMALL FRAME 70-105 LBS. 160.00-230.00; SLAUGHTER CALVES ALL WEIGHTS 25.00-50.00.

FEEDER CATTLE: STEADY. BULLS AND STEERS 400-900 LBS. 58.00-105.00; HEIFERS 300-700 LBS. 49.00-87.00.

LAMBS: STEADY. CHOICE AND PRIME 90-110 LBS. 97.00-103.00; LIGHTER LAMBS 110.00-121.00; HEAVY EWES 21.00-31.00; LIGHT EWES 35.00-53.00.

GOATS: STEADY. SMALL 25.00-35.00; MEDIUM 40.00-65.00; LARGE 90.00-115.00.

HOGS: STEADY. 210-250 LBS. 43.00-46.00; 255-300 LBS. 39.00-45.00;

HEAVY SOWS 37.00-41.00; LIGHT SOWS 29.00-35.00; BOARS ALL WEIGHTS 14.00-16.00.

Carlisle Livestock

Carlisle, Pa.

Report Supplied by Auction
Tuesday, May 23, 2000

SLAUGHTER CATTLE: COWS, ACTIVE! BREAKERS 42.00-48.25, 1 AT 51.50, BONERS 38.00-45.00, LEAN 33.00-43.00, BIG MIDDLE 39.00-41.75, SHELLY 31.00 AND DOWN; BULLS YG#1 1205-1750 LBS. 52.00-52.50, 1 ANGUS 2170 LBS. 43.00.

FEEDER CATTLE: STEERS MED. AND LARGE #2 400-850 LBS. 77.00-91.00; HEIFERS MED. AND LARGE #1 200-400 LBS. 92.50-145.00, MEDIUM AND LARGE #2 500-850 LBS. 69.00-86.00; CALVES RETURNING TO THE FARM, HOLSTEIN BULLS #1 75-140 LBS. 130.00-195.00, HOLSTEIN HEIFERS #1 85-95 LBS. 330.00-345.00, HOLSTEIN HEIFERS #2 75-100 LBS. 140.00-275.00.

SWINE: BOARS OVER 350 LBS. 6.50-14.50; FEEDER PIGS 10-30 LBS. 125.00-192.50 PER CWT.

GOATS: FANCY KIDS 55.00-66.00; FLESHY KIDS 40.00-54.00; SMALLHIN KIDS 17.00-37.50.

LAMBS: GOOD AND CHOICE 40-60 LBS. 107.50-127.00, 60-75 LBS. 99.00-110.00, 80-130 LBS. 86.00-98.00.

SHEEP: ALL WEIGHTS FAT 24.00-27.00.

SALE EVERY TUES. 5 P.M. FOR RABBITS, POULTRY AND EGGS, 6:30 P.M. FOR LIVESTOCK, STARTING WITH CALVES; SPECIAL FED CATTLE SALES TUES., JUNE 6 AND 20; SPECIAL FEEDER CATTLE SALES TUES., JUNE 6 AND 20; PEN LOTS OF CATTLE SOLD IN ORDER RECEIVED; EARLYBIRD PENS CLOSE TUES., 2 P.M. SPECIAL NOTE: TAYLOR'S RECEIVING STATION WILL BE CLOSED MON., MAY 29, AND HATFIELD BUYING STATION WILL BE CLOSED WED., MAY 31.

New Holland Calves, Sheep, Goats

22 May 2000

Report Supplied By USDA
CALVES SHEEP GOATS

MONDAY	96	1198	1325
LAST WEEK	127	697	1153
LAST YEAR	204	1121	1376

CALVES Compared to Thursday's auction, vealers and slaughter calves were onlylightly tested A reduced supply of Holstein bulls returning to feed sold unevenly steady with good demand The Holstein heifers market was fully steadyon a thin test

VEALERS Individual Good 120 lbs 50 00 Individual Utility 70 lbs 15 00 **SLAUGHTER CALVES** Few Good and Choice 185-300 lbs 85 00-107 00

RETURNED TO FARM Holstein bulls 90-125 lbs 180 00-197 00 Plainer type bulls 80-115 lbs 135 00-185 00, few weak calve 70-105 lbs 85 00-165 00 Holstein heifers 80-100 lbs 250 00-340 00

SHEEP Compared to Thursday, slaughter lambs under 80 lbs were 10 00-15 00 lower, heavier weights sold steady Slaughter ewes sold steady with Yearlings and 2 year olds as much as 10 00 lower

SLAUGHTER LAMBS Choice and Prime 2-3 40-80 lbs 95 00-110 00, 80-110 lbs 100 00-120 00

SLAUGHTER EWES Good and Choice Yearlings and 2 year olds 40 00-70 00 Utility and Good 1-3 20 00-43 00 Aged Bucks 150-300 lbs 25 00-45 00

GOATS (All sold by the head) Billies Large 100 00-12 00, few up to 140 00 Medium 75 00-100 00 Mutton Choice and Prime 75 00-110 00 Nannies Large 70 00-100 00 Medium 40 00-70 00 Yearlings Choice and Prime 60 00-90 00 Kids Choice and Prime 45 00-75 00 Good 20 00-45 00

Lebanon Valley Livestock

Fredericksburg, Pa.

Report Supplied by Auction
Tuesday, May 23, 2000

STEERS: SELECT 1-3 65.50-66.75. **HOLSTEIN STEERS:** LOW

CHOICE 2-3 1510 LBS. 63.00, SELECT 1-2 58.00-59.25, STANDARD 1-2 55.00-57.00.

HEIFERS: SELECT 1-3 66.75, STANDARD 1-2 55.25.

COWS: BREAKERS 75-80% LEAN 44.00-45.50, BONERS 80-85% LEAN 42.75-43.75, LEAN 85-90% LEAN 39.00-42.50, SHELLS DOWN TO 28.00-37.50.

BULLS: YG#1 1155-2170 LBS. 53.00-55.25, YG#2 1045-2005 LBS. 44.25-52.50.

FEEDER CATTLE: STEERS HOL. 385-655 LBS. 71.00-71.50; HEIFERS, HOL. 520-650 LBS. 93.00-104.00; **BULLS 770-940 LBS. 45.50-52.50 HOL.**

FARM CALVES: #1 95-125 LBS. 186.00-209.00; #2 80-120 LBS. 165.00-185.00; **HOLSTEIN HEIFERS #1 85-100 LBS. 300.00-345.00, #2 70-130 LBS. 155.00-280.00; BEEF TYPE BULLS AND HEIFIERS 80-90 LBS. 150.00-162.00.**

HOGS: 40-45% 170 LBS. 47.50-50.00. **SHEEP:** GOOD AND CHOICE 55 LBS. 101.00.

GOATS: MED. BILLIES 80.00, MEDIUM NANNIES 65.00, SMALL KIDS 30.00-35.00 PER HEAD.

Friend's Stockyard, Inc.

Accident, Md.

Report Supplied by Auction
Monday, May 22, 2000

STOCK STEERS AND BULLS 200-500 LBS. 50.00-117.00.

STOCK HEIFERS 36.00-100.00.

SLAUGHTER STEERS GOOD TO CHOICE 66.00-75.50, MEDIUM TO GOOD 52.00-65.50, HEAVY CHOICE OVER 1450 LBS. 61.00-71.00.

HOLSTEIN STEERS HEAVY CHOICE 56.00-65.00, LIGHT 45.00-55.50.

SLAUGHTER HEIFERS GOOD TO CHOICE 68.00-75.85, MEDIUM TO GOOD 45.00-66.50.

BULLS HEAVY 45.00-54.00, LIGHT

40.00-55.50.

COWS UTILITY (HOLSTEINS) 38.00-46.50, **COMMERCIAL TO GOOD** 32.50-39.00, **CULL COWS** 32.00 AND DOWN.

VEALS GOOD TO CHOICE 70.00-140.00, **MED. TO GOOD** 50.00-67.00.

BOB CALVES 50.00 AND DOWN. **HOLSTEIN BULL CALVES** RETURN TO FARM 90-120 LBS. UP TO 212.00; **HOLSTEIN HEIFER CALVES** RETURN TO FARM 90-120 LBS. UP TO 336.00; **BEEF X CALVES** RETURN TO FARM UP TO 150.00.

HOGS, TOP QUALITY, UP TO 46.00.

SOWS UP TO 35.00. **LAMBS, CHOICE,** UP TO 75.00. **LIVESTOCK PRICES ARE ALL GIVEN PER HUNDRED WEIGHTS.**

Livestock Cooperative Auction Market Of North Jersey

Hackettstown, N.J.

Report Supplied by Auction
Tuesday, May 23, 2000

CALVES .19-3.35.

COWS .32-.47.

EASY COWS .24½-.41½.

FEEDERS 300-600 LBS. .34-.99.

HEIFERS .44-.68.

BULLS .34½-.66.

STEERS .42-.66½.

HOGS .36-.53½.

ROASTING PIGS EA. 5.00-36.00.

BOARS .13½.

SOWS .15-.40.

SHEEP .16-.65.

LAMBS EA. 15.00-79.00.

LAMBS PER LB. .37½-1.33.

GOATS EA. 52.00-180.00.

KIDS EA. 4.00-81.00.

787 HEAD TOTAL.

Thanks and Congratulations to



Quality Buildings and Equipment

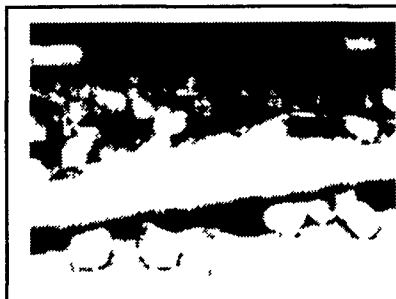
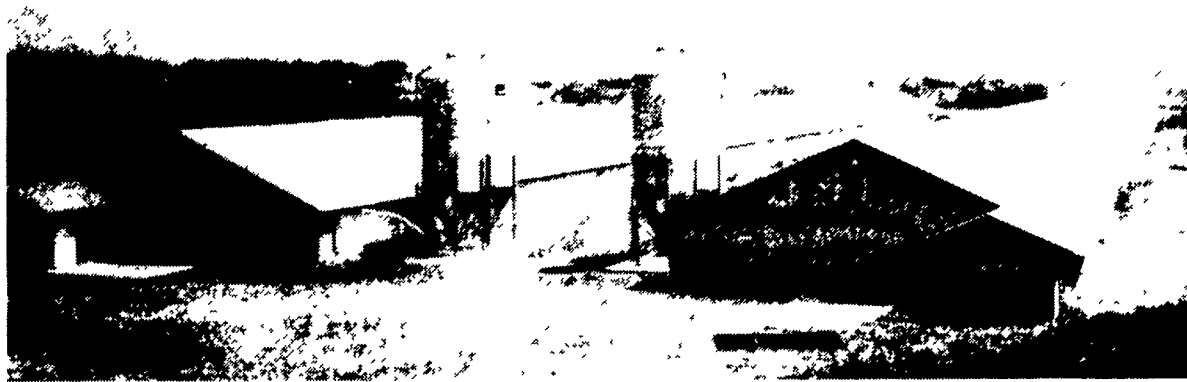


Ray & Carol Espenshade, Lewisburg, PA
On Their New

44'x500' Broiler Houses

Featuring:

- **CHORE-TIME Feeding**
- **CHORE-TIME Nipples**
- **CHORE-TIME Ventilation**
- **Chore-Tronics™**
The Simple Solution
- **Automated Controls**
- **Wheeling Painted Galvanized Steel Roofing and Siding**
- **Panelized Buildings**
- **Poured Walls**



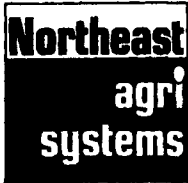
Chore-Time nipple drinkers come fully assembled for quick and easy installation and feature a low profile aluminum support channel. To eliminate problems there is no glue, sonic welding or rubber "O" rings in the nipples, saddies and pipe assemblies.

Chore-Time's new MODEL C2® PLUS Broiler Feeding System gets birds off to a good start, minimizes wasted feed, and provides birds with consistent access to fresh feed. The latest in Chore-Time's 45-year history of outstanding broiler feeding systems, the MODEL C2® PLUS includes a reinforced pan eating area and cone wear surface. This may be Chore-Time's most durable broiler feeder yet.



"Building and Equipment by Northeast Agri Systems"

Authorized CHORE-TIME master distributor since 1982



Northeast Agri Systems, Inc.

Flyway Business Park
139A West Airport Road
Lititz, PA 17543
1-800-673-2580
Ph: (717) 569-2702
Email@neagri.com

Delmarva Office
305 University Ave.
Federalsburg, Md.
1-800-735-6361
410-754-9434



Contracts Available
Call For Information
• Broiler • Turkeys • Hogs
• Breeders •
Organic/Natural Egg •
Call for our free brochure
"What is contract production?"
Call Jay Sensenig
1-800-673-2580



Dedicated to PRODUCT LEADERSHIP™

SIMPLE, VERSATILE, and AFFORDABLE Chore-Time® SUPER-Selector™ PNT Ventilation Control is a user-friendly 12-stage microprocessor control designed to efficiently work with nearly all ventilation methods - natural, negative static pressure, and tunnel. Easy to operate, this control features two heat and 10 cooling stages. The SUPER-Selector is easy to set up and adjust to fine tune for your building's specific ventilation requirements.

Store Hours: Monday-Friday 7:30 am to 4:30 pm
24 Hour-7 Day Repair Service

