

Farmers Produce Auction

Mount Hope, Ohio
Report Supplied by Auction
May 23, 2000

ASPARAGUS: .63-1.00 LB.
RODISHES: 4.00 4 BU.
RHUBARB: .20-1.00 LB.
STRAWBERRIES: 2.00-2.25 QT.
TOMATOES: HYDROPONIC SM. TO LRGE. .30-.60 LB.
FLOWERS: BEDDING ANNUALS 1.00-9.00 FLAT, .25-4.00 POT;
POTTED GERANIUMS .25-1.25.
PERENNIALS: 15.00-17.50 FLAT, .50-3.00 POT.
HANGING BASKETS: 2.50-9.00.
NURSERY STOCK: SHRUBS 1.00-5.00; TREES 1.50-17.00.
NEXT WEEK'S SALE DAYS TUES. AND THURS.

Phila. Herb

PHILADELPHIA Terminal
Prices as of 25-MAY-2000

Provided by: Fruit and Vegetable Market News, Federal-State Market News Service, USDA.

Phone: (215) 597-4536 Fax: (215) 336-0355

PARTLY CLOUDY 62-83
NA-FV055
MISC HERBS —ANISE: 3/4 ctns CA 24s 18.00 —ARRUGULA: ctns bchd FL 24s 8.00-9.00 NJ 24s 8.00 —BASIL: 1 kg ctns IS 12s 13.00 crts bchd FL 15s 12.00 —CELERIAC (CELERY ROOT): OFFERINGS INSUFFICIENT TO QUOTE —CHERVIL: 1 kg ctns bchd IS 12s 17.00 —CHIVES: 1 kg ctns bchd IS 12s 16.00-18.00 —CILANTRO: 4/5 bucrts bchd NJ 24s 9.00-10.00 4/5 bucrts lse NJ 9.00 ctns bchd FL 24s 8.00 MX 30s 7.00-8.00 —DILL: ctns bchd NJ 24s 8.00 —DRY ESCHALLOT: NO

SALES REPORTED —
HORSERADISH: OFFERINGS INSUFFICIENT TO QUOTE —
MARJORAM: 1 kg ctns bchd IS 12s 13.00 —MINT: ctns bchd FL 12s 8.00 NJ 12s 8.00 1 kg ctns bchd IS 12s 10.00 —OREGANO: 1 kg ctns bchd IS 12s 13.00 —ROSEMARY: 1 kg ctns bchd IS 12s 13.00 —SAGE: 1 kg ctns bchd IS 12s 13.00 —TARRAGON: 1 kg ctns bchd IS 12s 17.00 —THYME: 1 kg ctns bchd IS 12s 13.00 —WATERCRESS: ctns bchd FL 12s 6.50 24s 10.50-11.00 mostly 11.00.

Cumberland Valley Produce Auction

Shippensburg, Pa.
Report Supplied by Auction
May 19, 2000

APPLES: 1.00-4.50 1/2 BU.
ASPARAGUS: .50-1.20 BUNCH.
CIDER: .70-1.50.

ONIONS: .20-.45 BUNCH.
PEAS: SUGAR 14.00-17.50 FLAT, 1.00-1.10 PINT; SNAP .90 PINT.
RADISHES: .20-.35 BUNCH.
RHUBARB: .90 BUNCH.
SPINACH: 3.75-4.25 1/2 BU., 8.00-9.00 BU.
STRAWBERRIES: 16.50-20.00 FLAT.
TOMATOES: RED SM. TO LARGE .35-1.10 LB.
PLANTERS: 2.50-12.00.
FLOWERS: BEDDING ANNUALS 1.00-9.50 FLAT, .20-.60 POT;
POUCHES 7.00-8.00, GERANIUMS .80-2.00.
FLOWER BASKETS: 3.00-10.00.
VEGETABLE PLANTS: 1.00-8.00 FLAT.
PERENNIALS: 2.50-8.00.
FLOWER WAGON: 85.00.
OPERATING MON., TUES., THURS., FRI., 9 A.M.

Buffalo Valley Produce

Mifflinburg, Pa

Report Supplied by Auction
Thursday, May 23, 2000

ASPARAGUS: 1.00 BUNCH.
ONIONS: SPRING .30-.45 BUNCH.
STRAWBERRIES: 2.50-2.75 QT.
FLOWERS: ANNUALS 3.00-8.00 FLAT, .60-2.00 POT; GERANIUMS .25-1.30 EACH; ROSES 4.50-5.50.
SALE DAYS TUES. AND THURS., 10 A.M.

Morrison's Cove Livestock

Martinsburg, Pa.

Report Supplied by Auction
Monday, May 22, 2000

CATTLE: 147 HEAD.
STEERS: CHOICE 71.00-75.00, GOOD 66.00-70.00.
HEIFERS: CHOICE 70.00-74.00, GOOD 66.00-69.00, UTILITY AND COMMERCIAL 37.00-47.00, CANNER AND LOW CUTTER 21.00-35.00.
BULLOCKS: 48.00-57.00.
BULLS: YG#1 47.00-50.50.
FEEDER CATTLE: STEERS 68.00-83.00, BULLS 64.00-79.00, HEIFERS 58.00-78.00.
CALVES: 120. PRIME, NO MARKET TEST, CHOICE 90.00-109.00, GOOD 79.00-87.00, STANDARD 25.00-55.00; HOLSTEIN BULLS 90-130 LBS. 90.00-170.00, HOLSTEIN HEIFERS 90-130 LBS. 200.00-330.00.
HOGS: 151...US#1-2 45.00-46.50, US#1-3 41.00-43.00.
SOWS: US#1-3 33.00-42.00.
BOARS: 12.00-30.00.
FEEDER PIGS: 4. US#1-3 20-50 LBS. 17.00-44.00.
SHEEP: 58 HEAD. CHOICE LAMBS 105.00-115.00, GOOD LAMBS 90.00-100.00, SL. EWES 20.00-49.00
GOATS: 26.00-73.00.



Let Your Crops Dine On Alpine

The Company That Offers You High Quality Plant Food At Competitive Prices

Talk To Us About Seed Banded Plant Food And Foliar Feeding
Place Phosphorus Where It Does Most Good (Seed Banded)

6-24-6 9-18-9 3-18-18 5-15-15
Check Early Order & Quantity Price

Zimmerman Lime & Fertilizer, Inc.

(717) 733-7674

235 W Burkholder Dr

Lititz, PA 17543

Dealer of Raven Liquid Storage Tanks

MESSICK'S

RD #1 Box 225A,
Route 30
Abbottstown, PA 17301
717-259-6617

187 Merts Drive
Rheems Exit - Route 283
Elizabethtown, PA
717-367-1319

EXTENDED SPRING HOURS

Thru June 30: Monday thru Friday
Parts, Sales, & Service will be open from
7:00 am until 6:00 pm

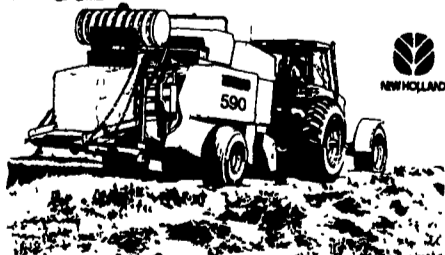
Crop Saver, the safe effective way to preserve baled hay?

CropSaver gently preserves all types of hay including alfalfa, grass and other crops at a 30% maximum moisture level. Compare that to traditional baling methods that allow a 16-20% maximum moisture level!



55 Gal. Drum \$382.⁵⁰
15 Gal. Drum \$130.⁵⁷

All Applicators on Sale - 10%!



We can retrofit Case, John Deere, New Holland, Vermeer, and Hesston balers

We are committed 365 days a year to after hour parts support. Just call our pager at: 293-6406

HOLIDAY HOURS

Messick's Parts Department* will be open during regular business hours on the following holidays:

Memorial Day - July 4th - Labor Day

*All other departments will be closed.



Makes it easy to own the best

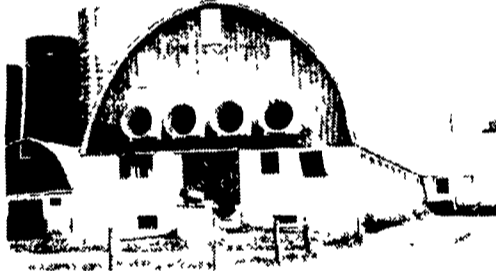


Keep Your Cows Comfortable with "TUNNEL VENTILATION"

Comfortable Cows Produce More Milk



Free Stall Barn, Robesonia, PA



Tie Stall Barn, Myerstown, PA

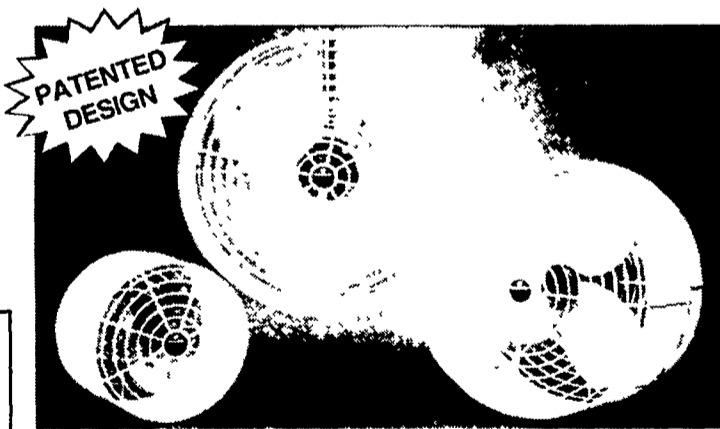
ATTENTION FREESTALL BARN OWNERS!
Let Us Show You A Recent Tunnel Ventilation System In A Freestall Barn.

Barn Kooler® Air Circulation Fans

20", 24" & 36" IN STOCK

Cool Down with a Cool Price

Receive Year-Round benefits for your livestock with a Schaefer Barn Kooler



WILL SHIP ANYWHERE

Call CEDAR CREST To Assist You In Designing Your Ventilation System. We Also Do Complete Installations

Cedar Crest Equipment



339 King Street
Myerstown, PA 17067

(717) 866-1888 • 1-800-646-6601



Parts Outlet
RD 2 Box 271
East Earl, PA 17519
(717) 354-0584