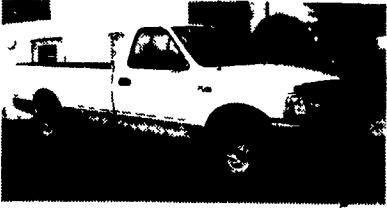


Anthony L.

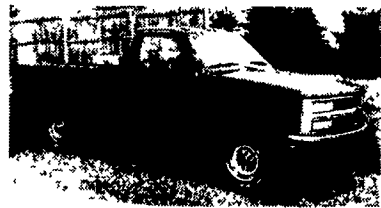
# LANDIS

AUTO SALES

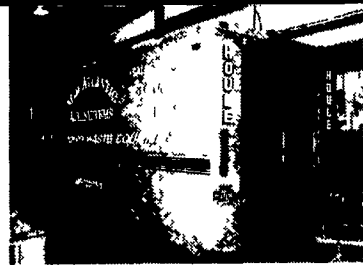
3394 Division Hwy., New Holland, PA 17557 (717) 355-0644  
Rt. 322, 1-1/2 mi west of Blue Ball



**97 Ford F150 XL**  
2WD, 4.2, 5 Sp., PS, PB, A/C,  
White & Tan, 67,000 Mi  
**\$8,900**



**95 Chevrolet K2500 Silverado**  
4x4, 6.5 Turbo Diesel, AT, PS, PB,  
AC, PW, PDL, 8,600 GVW, 86,000  
Miles, Real Nice, Straight Truck  
**\$14,900**



1987 International 7.3 diesel, 18,000 GVW,  
runs good, \$6,000, Gruman alum body

MID-ATLANTIC  
**agrisystems**

4019 Ashville Rd., Quarryville, PA 17566  
800-222-2948 • 717-529-2782



**1979 International 1800 S/A**  
Dump Truck, 345 Gas Engine, 5x2 Trans,  
Air Brakes **\$3,500**  
**Curry Supply Co., Curryville, PA**  
1-800-345-2829

# BRUBAKER'S

**AUTO SALES**

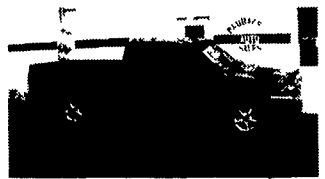
PH. 717-866-5237

Hours: Mon.-Fri. 8 a.m. - 9 p.m.; Sat. 8 a.m. - 6 p.m.

ROUTE 422  
MYERSTOWN, PA



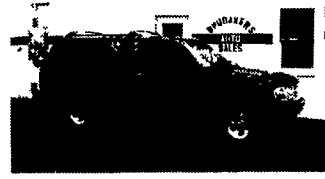
**99 FORD WINDSTAR LX**, Black, 3.8  
V6, AT, AM-FM Cas., PW, PL, CC, Tilt,  
Dual AC, 37,235 Mi  
**\$17,600**



**98 DODGE DAKOTA SLT**, 4x4, Ext  
Cab, Red, 318 V8, 5 Sp., AM-FM Cas.,  
AC, PW, PL, CC, Tilt, Keyless Entry,  
51,015 Mi  
**\$15,800**



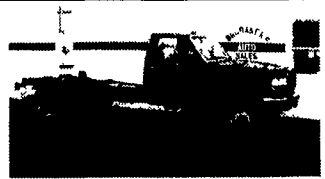
**98 CHEVY ASTRO AWD**, Silver, V6,  
AT, AM-FM Cas., AC, PW, PL, CC, Tilt,  
Dual Heat, 46,194 Mi  
**\$13,900**



**97 FORD EXPLORER XLT**, 4 Dr,  
AWD, Green, V8, AT, AM-FM Cas., AC,  
PW, PL, CC, Tilt, Leather, Keyless  
Entry, CD Changer, Pwr Seats,  
70,280 Mi  
**\$12,900**



**97 FORD F-150 XLT**, 4x4, Ext Cab,  
Black/Tan, 5.4 V8, AT, AM-FM Cas.,  
AC, PW, PL, CC, Tilt,  
65,845 Mi  
**\$16,900**



**96 FORD SUPER DUTY DUALY**,  
Power Stroke, Red, AT, AM-FM ST,  
150,835 Mi  
**\$13,800**



**95 CHEVY 3500HD CHEYENNE**,  
Dually, White, Diesel, 5 Sp., AM-FM  
ST, AC, 110,535 Mi  
**\$14,800**



**92 GMC 2500 SUBURBAN SLE**, 4x4,  
9 Pass, Gray, 454 V8, AT, AM-FM Cas.,  
AC, PW, PL, CC, Tilt, Pwr Seat,  
84,725 Mi  
**\$14,500**

## USED TRUCKS FOR SALE

- 1997 DODGE DAKOTA CLUB CAB SLT**, 4x4,  
AT, A/C, Most Options, 98,000 Miles **\$12,500**
- 1997 FORD MAXIVAN**, AT, 5.4L V8,  
15 Passenger, 20K miles **\$19,500 \$18,900**
- 1996 Ford F250**, 4x4, Diesel, AT, A/C, Most Options,  
Mechanics Topper. **\$15,500**
- 1995 DODGE RAM 2500 CLUB CAB**, 4x4,  
Diesel, 5 Spd., A/C, 70K Miles, Long Bed **\$21,800**
- 1994 FORD F450 SUPER DUTY**, 12' Box,  
5 Spd. Diesel, No Air, 68,000 Mi **\$14,500**
- 1994 DODGE 2500**, Cummins, AT, Most Options,  
Black & Grey, Grey Int., 107,000 Mi **\$13,900**
- 1993 CHEV. SUBURBAN 1500 4x4**,  
AT, 106K miles, black. **\$13,500**
- 1992 Dodge Dakota Club Cab**, 4x4,  
AT, A/C, Most Options, 87,000 Miles **\$6,900**
- 1990 FORD F150 4X4 XLT**, AT, V8,  
Most Options, 133K miles. **\$4,995**
- 1987 FORD F250 SUPER CAB**, Diesel, AT, Most  
Options, 8,800 GVW **\$3,500**

## SCHAEFFERSTOWN

**AUTO & TRUCK SALES**  
Rt. 501, 1-1/2 miles South of  
Schaefferstown  
**717-949-2812**

# BRENNER

PHONE: 717-232-4271

www.brennerdodge.com Fax: 717-233-8221

**RON JACKMAN**

Business Link Account Manager

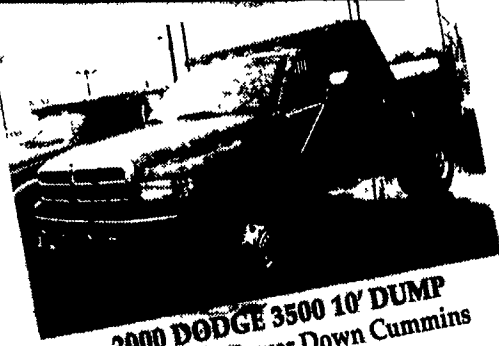
The New Commercial Sales Group

**RAY MARINO**

Business Link Account Manager

Harrisburg's Only BusinessLink Dealer

"Saving the Small Business  
Owner Time, Money & Hassles"



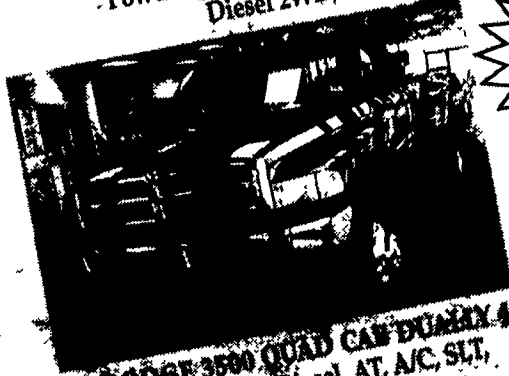
**2000 DODGE 3500 10' DUMP**  
Power Up & Power Down Cummins  
Diesel 2WD, Auto



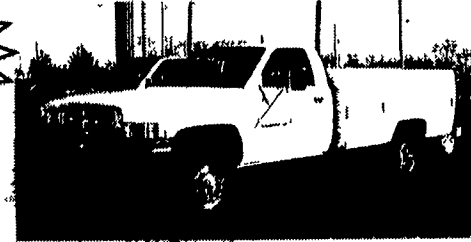
**2000 DODGE RAM 3500 MAXI VAN**  
15 Passenger People Mover, Center Aisle, Dual Air,  
Raised Roof, AT, Cruise, Tilt and More



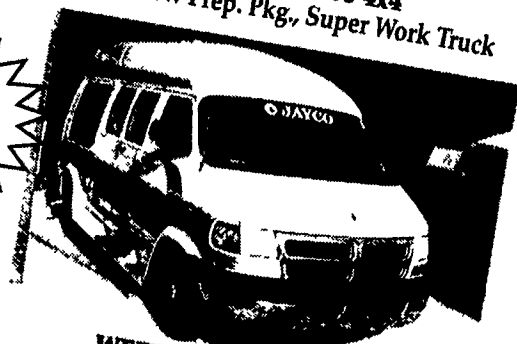
**2000 DODGE RAM 2500 4x4**  
AT, A/C, Snow Flow Prep. Pkg., Super Work Truck



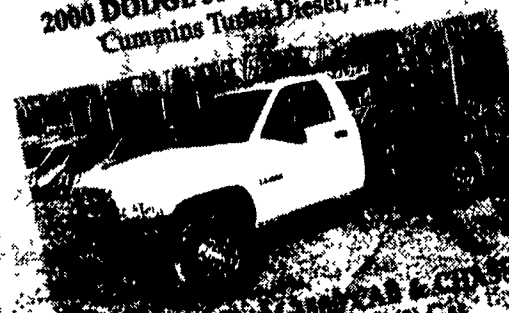
**2000 DODGE 3500 QUAD CAB DUALY 4x4**  
Cummins Turbo Diesel, AT, A/C, SLT,



**2000 DODGE 3500 4x4**  
Stahl Grand Challenge Utility Body, AT, A/C



**WEEKENDER SPECIAL**  
**2000 DODGE JAYCO CONVERSION VAN**  
V8, TV, Sleeps, Lavatory and More!  
10 Year Financing Available!



**2000 DODGE RAM 3500 4x4 DIESELS**  
With Stahl Utility Bodies & Pwr Packages  
AT, AC, Cab