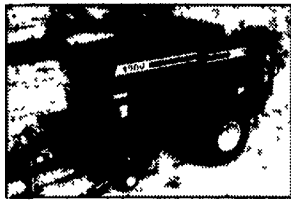
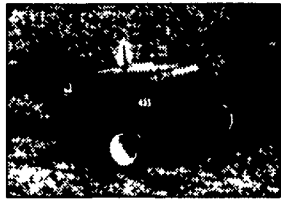


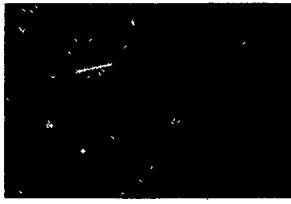
BUY ONE - GET



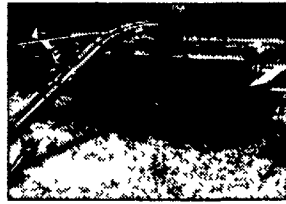
WAS \$38,500, IS \$34,500
A 22444 Hesston 4900 Baler,
26,000 Bales



WAS \$3,200, IS \$2,900
C 31177 CIH 435 Baler
with Thrower



WAS \$8,450, IS \$7,500
C 22296 JD 1470 12' Disc Mower
Conditioner, Rubber Rolls, End-Pull



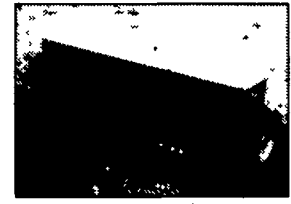
WAS \$3,950, IS \$3,700
B 17722 CIH 1490 Mower
Conditioner



WAS \$15,900, IS \$15,000
A 22880 1997 NH 1431 12'
Mower Conditioner, Hydro-Swing



WAS \$6,900, IS \$6,500
A 22723 Rhino SR20 20' Batwing
Mower, Flex-Wing, Stump Jumpers,
1000 PTO, Front Chains,
Laminated Tires



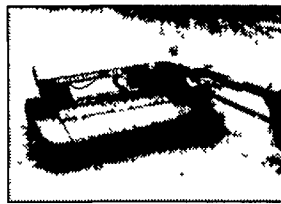
WAS \$3,500, IS \$3,200
A 22883 JD 8350 12' Convent.
Drill, 24 Row, 6' Spacing,
Double Disc, Excellent Condition



SALE PRICE \$5,500
B 18847 1991 NH 499 Mower
Conditioner, 12' 3" Cut, Hydro
Swing, Rubber/Rubber Rolls



SALE PRICE \$20,500
B 18138 1995 CIH 8315 Mower
Conditioner, 15' 3" Cut, Center
Pivot, Rubber/Steel, 110"
Conditioning Rolls



SALE PRICE \$7,900
A 23035 1996 NH 415 Mower
Conditioner, 11' 4" Cut, Rubber
Rolls, 1000 PTO



SALE PRICE \$4,700
B 18493 Billion 15' Flail Mower,
540 PTO, New Center Bearings,
Mechanically Good Condition



SALE PRICE \$2,700
A 23027 Bush Hog 2620 20'
Rotary Cutter

USED TILLAGE

- B 19636 DMI 530 Subsoiler
- B 19428 BR 25' CF Packer
- B 19359 DMI Crumbler
- B 18868 DMI 3 Arm Subsoiler
- B 18505 DMI 5 Shank Subsoiler
- A 22955 DMI 5 Shank Tiger II Subsoiler
- A 23032 DMI 7 Shank Subsoiler
- B 22866 DMI 7 Shank 730 Ecolo-Tiger
- B 19130 FR 10 12 Chisel Plow
- A 22879 SF 4212 11 Chisel Plow
- B 19355 BR 8RN Cultivator
- A 23010 IH 183 Cultivator
- B 18068 MF 18' Cultivator
- B 17467 MG PT-2 32' Cultivator
- B 18067 UM 20' Cultivator
- B 22431 KR 6331 Landstar
- B 17463 KR 6331 31' Landsman
- B 18870 CIH 720 6 x 180L Plow
- B 17476 IH 145 4 x 18 Plow
- B 17477 IH 145 4 x 18 Plow
- B 17038 IH 710 Plow 6 x 16 IF
- B 19191 BR X108 21' Packer
- B 19303 UM 24' Basket
- B 22957 UM 25' Basket
- B 17326 UM 29' Basket

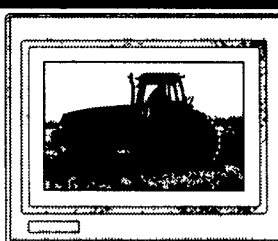
USED HAY & FORAGE

- A 23111 NH 1431 Mower Cond
- A 31379 CIH 8585 Baler
- C 31346 CIH 8545 Baler w/Thrower
- A 23053 CIH 8312 Mower Cond
- A 23035 NH 415 Mower Cond
- A 23022 NH 1495 Windrower
- A 22444 Hstn 4900 Big Baler
- C 22296 JD 1470-12 Mower Cond
- A 22880 NH 1431-12 Mower Cond
- A 22723 RH Sr20-20 Batwing Mower
- B 18906 CIH 8580 Big Baler
- B 17722 CIH 1490 12' Mwr Cond
- B 18138 CIH 8315 Mower Cond
- C 31014 CIH 8420 Rnd Baler
- C 31177 IH 435 Baler w/thrwr

USED DISCS

- B 19694 KR 4915A 21'
- A 23078 IH 475 18'
- A 23092 MF 520 12'
- A 23104 Mllr 10'
- A 23117 KR 4924A 21'
- B 19354 MF 820 23'
- B 19435 KR 4918 27'
- B 19610 KR 4942WR 22.5
- B 16907 IH 770 13'
- B 18976 IH 496 31'
- B 19360 JD 210 15'
- C 31217 JD 230 21'
- B 18669 JD 630 21'
- B 18970 KR 4907 25'
- B 17155 KR 4927A 27'
- B 16620 ML 28'

www.hooper.com



**YOUR INTERNET LINK
TO HOOBER, INC.
24 HOURS A DAY**

USED MISCELLANEOUS

- A 23025 Rhino 84" Mower
- A 23027 BH 2620 20' Mower
- A 22959 60 Fork Bucket
- A 22778 CIH 710 Loader
- A 22799 CIH 72 Bucket
- A 22938 CIH L700 Loader
- B 17109 CIH 1840 Skdsteer
- B 18260 FD 776B Loader
- B 18931 HR Baby Ditcher
- B V7976 HY V24A Lift Truck
- C 18886 KN 3450 Mixer
- C 17801 CIH 1840 Skdsteer
- C 31165 CIH 1840 Rops Skdstr

JUST TRADED

NEW TRADE-INS TO THE INTERCOURSE STORE

- 23128 White 6600 NT Planter
- 23143 Rynlds 14C Scraper
- 23133 Brillion 27' Packer
- 23136 CIH 1660 Combine
- 23139 Woods 315 Batwing Mower
- 23140 Woods 315 Batwing Mower
- 23126 IH 475 18' Disc
- 23122 CIH MX 135 MFD Cab
Tractor w/Ldr
- 23124 Fiat 80-66 Tractor
- 23101 Rynlds 14C-CS Scraper

JUST TRADED

NEW TRADE-INS TO THE MIDDLETOWN STORE

- 19947 CIH MX 240 MFD Tractor
- 19959 NH 650 4 x 6' Round Baler
- 19960 Woods 3180 Mower
- 19974 NH 489 Mower Cond
- 19980 Cidwil 400BU Grain Cart
- 19997 Case 930 Tractor
- 19998 Case 800 Tractor
- 19910 FD F350 4WD Sprayer
- 19931 KR 3115 Landsman
- 19932 BR 16' Solid Packer
- 19843 IH 800 10x18 Plow
- 19888 Case 930 Tractor
- 19890 CIH 5250 MFD Cab Tractor
- 19710 BR 14' Chisel Plow
- 19711 Tr Wy 20' Disc
- 19751 JD 310-13' Disc
- 19754 JD 7000-8RN Planter
- 19755 IH 464 Tractor
- 19710 BR 14' chisel plow
- 19711 TW 20' disc

JUST TRADED

NEW TRADE-INS TO THE McALISTERVILLE STORE

- 31399 MI MT 327D Tractor
- 31352 IH 800 6RN Corn Planter
w/liquid fertilizer
- 31354 CIH 5100 Grain Drill 20x6
w/grass seed
- 31358 CIH 1840 Skdsteer
- 18886 Knight 3450 Mixer Wagon

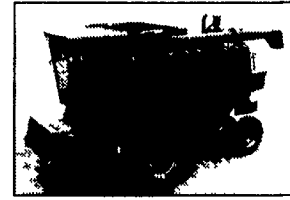
FREE TOY CO

WITH ANY USED COMBINE
FROM HOOBER AFTER MA

SEE A HOOBER SALESMAN F



WAS \$93,000, IS \$88,000
B 18830 B CIH 2166 2WD
Combine, 1200 Hours, Specialty
Rotor, Afs Option, Chopper, Field
Tracker, Chaff Sprdr, Extra Concave,
Tires: Steerng - 18.4x26, Drive -
30.5x32, Paint /Metal - Ok



WAS \$79,900, IS \$59,000
A 22232 CIH 1688 2WD, 2744
Hours, Rotor-Spec, Rock Trap,
GLM-Ag Leader, Deluxe Seat, Field
Tracker, 2 Sp Hydro, Chaff Sprdr,
Extra Concave, Tires: Drive 30.5x32,
Steerng-14.9-24



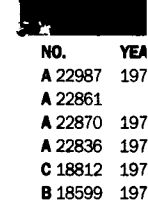
WAS \$95,000
A 22310 A CIH 2110
1979 Hours, Sp
Trap, GLM, Chop
Tires: Steerng
30.5x32, 1999
Service Has



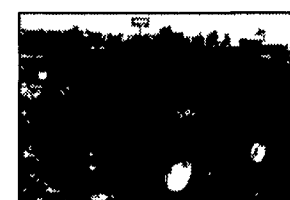
WAS \$49,000, IS \$45,000
C 31080 CIH 1680 2WD, 4040
Hours Diesel, Sp Rotor, Rock Trap,
GLM, Deluxe Seat, Field Tracker,
Chaff Sprdr, Tires: Steerng -
14.9x24, Drive - 30.5x32,
Metal /Cab Int - Good



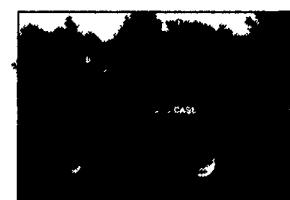
WAS \$69,000, IS \$62,000
B 18454 CIH 1666 4WD SP
ROTOR, 2722 Hours, Rock Trap,
Fdr Rev, Glm, Deluxe Seat, Chaff
Sprdr, Extra Concave, Uptime, A/B,
Beater, Tires: Steerng - 14.9x24,
Drive - 30.5x32



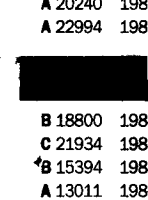
NO. YEAR
A 22987 197
A 22861 197
A 22870 197
A 22836 197
C 18812 197
B 18599 197



WAS \$50,500, IS \$35,000
A 16903 CIH 1660 2wd Diesel
Combine, Tires: Drive - 26.5 x 32,
Steerng - 14.9 x 24, Standard
Rotor, Rock Trap, Grain Loss
Monitor, Extra Concave, AFS



WAS \$39,000, IS \$29,500
A 13011 1986 CIH 1640 2WD
Combine, 3105 Hours, Tires: 23.1
x 26 Front, 11.00 x 16 Rear, Cab
w/ A/C, Heat, Deluxe Seat, Hooper
Uptime Service Has Been Done



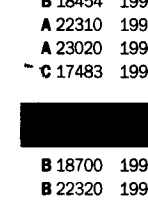
B 18800 198
C 21934 198
B 15394 198
A 13011 198
A 18855 199
C 31080 199



WAS \$38,500, IS \$18,000
A U1001 1983 IH 1480 Combine,
5127 Hours, Tires: 30.5 x 32
Front, 18.4 x 16 Rear, Specialty
Rotor, Good Sheet Metal, Hooper
Uptime Has Been Done



WAS \$32,500, IS \$26,800
C 30220 IH 1460 2wd Combine,
Specialty Rotor, Grain Loss
Monitor, Tires: Drive - 28x26,
Steerng - 18.4x16.1, Rebuilt
Trans, New Hydro, 4125 Hours



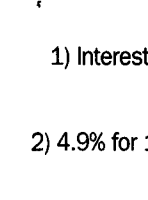
B 18700 199
B 22320 199
A 23014 199
B 17357 199
A 22970 199
A 22990 199



WAS \$57,000, IS \$46,000
B 17120 JD 9600 2WD, Feeder
Reverser, Auto Hdr Cntrl, Deluxe
Seat, Radio, Chopper, 2wd, Tires:
Drive - 30.5x32, Steerng -
18.4x26, 3175 Hours



WAS \$13,500, IS \$10,900
C-30846 1988 MF 550 2wd
Combine, 2177 Hours, 23.1 x 26,
10.00 x 16 Tires, Gray Cab, Hydro
Transmission, Rock Trap,
Excellent Paint



1) Interest
2) 4.9% for
3) Fixed
Fixed
FIN

FARM MACHINERY RUNS BETTER WITH HOOBER



Authorized UPS Station

All New & Used Products Backed
By Hooper Parts & Service
VISIT OUR WEBSITE: www.hooper.com