

1 FARM EQUIPMENT

**Low 3.9% Financing
For 36 Mos.**



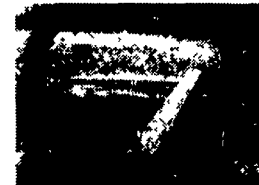
Gehl 865 Forage Harvester, 1000 PTO, w/2RN, Low Acreage \$13,000



GEHL 6635 SKID STEER
80 HP Turbo, 2 Speed,
Rental Unit (Reduced)



CALDWELL GRAIN CART
500 Bu., Like New
\$5,995



VICON 321 DISC MOWER CONDITIONER
10' Cut 3 Point Swivel Hookup
\$4,295



JOHN DEERE 525
17 HP Kawasaki
48" Mower



JOHN DEERE F930
24 HP, Gas, 72" Deck
\$4,695



Like New Cub Cadets Models 3165 & 3205
48" Mowers w/Baggers
16 HP \$4,500
20 HP \$6,500

BACKHOES/FORKLIFTS/SKID STEERS

Cat V80F Forklift, 7000 lb.
Case 1840 Unloaders
Case 580SL, Cab, 4WD, Ext.
Case 590SL, Cab, 4WD, Ext., 3,000 Hrs.

HAY & FORAGE

NH 489 Haybine, good
Case IH 600 Blower, like new
Gehl 1540 Forage Blower
Gehl 865 Harvester, 2RN
Vicon 321 Disc Mower Conditioner, 10' Cut
New Idea 5408 Disc Mower, 3 pt., 8' Cut

LAWN MOWERS & COMPACTS

Steiner 220, 2WD, Diesel, W-Mower
JD 525, 17 HP, 48" Front Cut
JD 650, 4WD, Rear Mower
JD 930 w/72" Cut
Cub Cadet 1450, 1750, 882 Diesel
Case/Ingersoll 444, 448, 224
MF 1010, 4WD, Diesel, w/Gear Drive
Attachments for Compacts, 3 pt.

TRACTORS

Case 1394, 2WD, ROPS, Loader, 60 HP
Magnum 8920, 18.4x42 Radials
Farmall 140 w/Woods Mower
JD 2350 2WD, Open Station

MISCELLANEOUS

JD 450 Hydra Push, Endgate
NI 3739, 390 Bu., Endgate
Case 1800 Chisel Plow, 3 pt., 12 Tooth
IH 46 Vibra Shank, 16"
Caldwell 500 Bu. Grain Cart, Like New
Hutchmaster 12' Offset Disk Harrow
Bush Hog 11' Offset Disk Harrow
Gehl MX170
Gehl 65 Grinder Mixer
Gehl 100 Grinder Mixer w/Scales

AS IS CORNER

CIH 1820 4 Row Cultivator.....\$1,400
NH 469 Haybine.....\$500
4 Trash Movers For Corn Planter.....\$100
Gehl 315 Scavenger.....\$1,500
New Idea 5408 Disc Mower, 3pt., 8'.....\$1,995
Gehl 1540 Forage Blower.....\$900
Sweepster 4' Front Broom For GT.....\$250
Woods 5' Pull Type Rotary.....\$595
Forklift Attachment, 4 Pin Tractor Mount.....\$495

A. L. HERR & BRO

Park Ave., Quarryville, PA 17566
Established 1890 (717) 786-3521 We Ship Parts U.P.S.

CASE III 2000 CASE CORPORATION **CASE**
Visit us on the Internet at <http://www.casecorp.com>

TRACTOR SERVICE

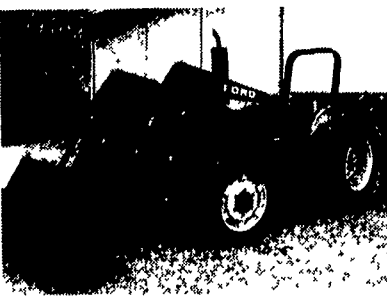
Rebuild Engine
Transmissions,
PTO's, Tune Ups
Zenith & Marvel-Schebler
Carburetors Rebuilt,
Injectors Tested,
Perkins Dry Sleeves Pulled,
N.H. Skid-Steer Loader

GLICK ENGINES

717-856-4842
208 Forest Hill Rd North of 23



N.H. 14 ft. Hay Header
for Bi-Directional, Like New, Farmer Own.
\$6,500 OBO
814-796-4091 - Tom or Dave



Ford 3910 II 4WD, dual remotes, w/Ford ldr., 1,000 hrs.



JD 6300, canopy, syncro, 15.5x38, dual remotes, R&P axle, 1,000 hrs.

FORD TRACTORS

8830, cab, air, 4WD, PS, 540 & 1000 PTO, 2,500 hrs
8240 SLE, cab, air, 4WD, 18 4x38, 750 hrs
TW15 II, cab, air, 4WD, 20 8Rx38, weights, 2,900 hrs
TW15 II, cab, air, 4WD, 18 4x38, weights, 5,200 hrs
TW10, cab, air, 18 4x38, DP, dual remotes, 5,600 hrs
TW10, rollbar, DP, dual remotes, 18 4x38, 2,800 hrs
7740 SLE, canopy, weights, **SOLD**, 2,100 hrs
7710 II, cab, air, 4WD, 18 4x34, 1991 w/ALO Ldr., 3,100 Hrs
7610, DP, dual remotes, 16 **SOLD**, 2,000 hrs
7610, rollbar, DP, dual remotes, 18 4x34, 4,800 hrs
7000, flat deck, rollbar, DP, 1 remote, 4,100 hrs
6610, rollbar, DP, dual remotes, 16 9x30, 3,400 hrs
545D, 4WD, 8x8 shuttle, 1 remote w/ldr., 350 hrs
5610 II, 4WD, rollbar, DP, 18 4x30, 3,000 hrs
5600, 8 spd, 18 4x30, 1 remote, 3,000 hrs
5030, 4WD, canopy, shuttle w/Ford ldr., 700 hrs
4630, rollbar, 8x8 shuttle w/Ford ldr., 500 hrs
4600 SU, diesel, 14 9x28, dual remotes, 1,060 hrs
4600 SU, diesel, 16 9x24 w/**SOLD** blade, 3,300 hrs
345D, 4WD, 8x8 shuttle w/ldr., 1,700 hrs
3910 II, rollbar, dual deluxe remotes, 275 hrs
3600, diesel, 8 spd, 13 6x28, 3,500 hrs
2120, 4WD, shuttle, ag tires, 300 hrs
1520, 4WD, hydro w/ldr & **SOLD** lwr., 800 hrs
2000, diesel, 8 spd, live PTO, 3,300 hrs

JOHN DEERE TRACTORS

4050, 2WD, cab, air, quad, 18 4x38, 3,400 hrs
6400, rollbar, pwr quad, 18 4x38, R&P axle 2,500 hrs
2755, cab, air, hi-low, dual remotes dual PTO R&P axle, 2,700 hrs
2755, cab, air, hi-low, dual remotes, dual PTO R&P axle w/JD ldr., 2,800 hrs
2755, canopy, hi-low, dual remotes, dual PTO, R&P axle, 3,000 hrs
2355, cab, air, 4WD, hi-lo w/JD ldr., 2,300 hrs
2355, canopy, dual remotes, 16 9x30 w/JD ldr 2,000 hrs
2010, gas, NF

EQUIPMENT

Gehl 125, grinder mixer w/unload extension
Brillion, 4 row deep till cultivator
NH 474, 7' haybine
Ford 951, 6' 3 pt rotary mower
JD 146, loader w/valve, off 2640
Ford 7411, loader w/40 series brackets
DUAL 210, loader fits 7700 & 7710, 2WD & 4WD
Bush Hog 3425, QT loader, fits 7710 2WD
Weights to fit most Ford tractors

Lease & Financing Available • Please Call For Appointment
All Tractors Tested On Our Farms • Tractors Stored Inside

Burkholder Bros.

Lebanon, PA 17042
(2 miles from Schaefferstown on Rt. 419 South. Turn right on Flintville Rd.)
2 Locations

717-272-2352

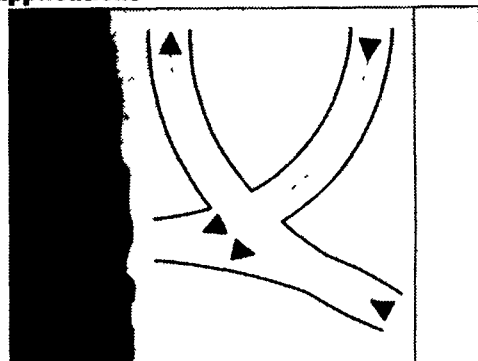
Lloyd Burkholder
330 Crest Rd., Lebanon, PA

717-949-2123

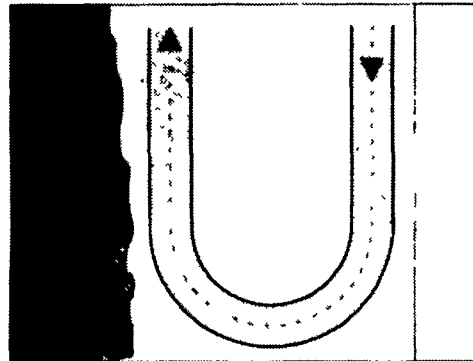
Leon Burkholder
400 Flintville Rd., Lebanon, PA

COMPACT LOADERS

- Stable
- Powerful
- Easy access
- High payloads
- Profitable applications



Conventional steering (articulated)



Kramer four wheel steering

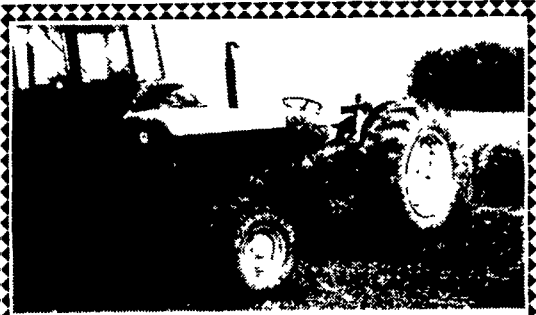
When it comes to manoeuvrability, Kramer four wheel steering is the choice to make. Even the tightest corners are accessed, and making distances shorter saves time and money. Kramer four wheel steering is well-designed for precise and safe working. In high-speed version, the drive train automatically switches to front axle steering for long-haul travel.

A. L. HERR & BRO

Park Ave., Quarryville, PA 17566
(717) 786-3521

Established 1890

We Ship Parts U.P.S.



John Deere 2030
2 Outlets, Runs Good
\$4,800
717-369-4115

USED SKID LOADERS

L785 NH, 1994 yr., 1530 Hrs., 57 HP Ford Diesel, Aux. Hyd., 2050 Lb. Lift Capacity, Universal Bucket Attach., Exc. Cond.. \$14,500
743 Bobcat, Kubota Diesel, 61" Dirt Bucket w/Teeth, Backhoe Brackets, Aux. Hydraulics, Nice Machine \$6,900
2SDK8 Toyota, 47hp Diesel, 66" Low Profile Bucket, New Tires, Tracks, with 9HD Backhoe w/18" & 24" Bucket..... \$11,000
1845 Case Rebuilt Diesel..... \$7,000
1840 Case, 2832 hrs., Cummins Diesel, 62" Dirt Bucket, Aux. Hydraulics..... \$8,900
1835B Case Diesel..... \$5,900
LX665 NH, 50hp Diesel, Aux. Hyd..... \$8,000
3510 Gehl Rebuilt Gas Engine..... \$3,800
1835B Case Diesel, Runs Good..... \$5,500
Financing Available COME and MAKE OFFER

COMING IN

1845C Case 1996 L553 New Holland
753 Bobcat

We Make Hydraulic Hose Assemblies. In Stock: Standard and Metric Fittings, 2 and 4 Spiral Hose Up to 1"

Hydrostatic Transmission Rebuilding Save Up To 50% on Parts Hard To Find Parts

Hydraulic System Vacuum Flushing Engine Parts and Service Kubota Perkins Ford Wisconsin Yanmar Etc. Related to Skid Loaders

Used Parts for Most Makes and Models of Skid Loaders

Wanted to Buy Loaders for Salvage or Repair

GD Equipment

414 Rowe Rd., Shippensburg, PA
717-530-0170

NEW FARMCO

BALE WAGONS

• 8x18 w/8 ton gear 11L15 tires **\$2,050**
• 8x18 bale body only **\$1,250**
Newswanger Farm Shop (610) 683-5970

USED

EQUIPMENT

Case IH 5140, cab, 2800 hrs, 18 4x38's \$27,500
IH 35 hyd rake \$1,800
IH 510 16x7 grain drill \$2,200
(3) Dutch Brothers metal hay wagons w/8 ton running gears & ext tongue **\$1,500 each**
IH fast hitch sickle bar mower \$300
IH 400 4R w/fert & insecticide \$800
IH fast hitch sickle bar mower \$300
IH 400 4R w/fert & insecticide \$800
NH 36' elevator \$750
NH 489 haybine \$2,500
200 gal trailer sprayer \$300
150 gal drop nozzle sprayer \$200
717-862-1820