

Dairy Collectors, Divco Trucks, Cream Separator Convention Set

GRANTVILLE (Dauphin Co.) — The joint convention of the National Association of Milk Bottle Collectors (NAMBC), the Divco Club of America and the Cream Separator Association will be the first and largest gathering of dairy related collectors ever to be held. The event starts the celebration of "June is Dairy Month" and will be held on June 1, 2, 3 and 4 at the Holiday Inn in Grantville.

Celebrating its 20th year, NAMBC will feature numerous displays, among them "The Historical Cream of the Crop", Borden Co. go-withs and a 50 state collection of milk bottles. In addition to the displays, most of the many participants' rooms will be transformed into bottle shops guaranteed to foster a considerable amount of fellowship, buying, selling and trading of milk bottles and other dairy collectibles.

Featured also is a bus trip to the famous Turkey Hill Farms, a visit from the Purple Cow providing photo opportunities, the annual auction and banquet events. The Pennsylvania Dairy Princess will be on hand to assist the ice cream "scoopers" at the 'sundae on Saturday' event. A postal sub-station featuring a special cachet of the event, book

signings of recent publications and the sale of related merchandise including toy Divco trucks by Ertle Co. will all be part of the program. A special commemorative bottle produced by the Stanpac Manufacturing Company, providing individual club recognition panels and the event, will be made available to all registrants.

The biggest display of Divco trucks ever to be assembled, showing some 25+ trucks of varied years, models and styles, will provide viewing of some of the finest examples of a by-gone era. Featured among the club trucks will be the extraordinary "Milk Shaker." It is hoped that a truck from each model year will be present. Conventioneers will be treated to a truck rodeo, a wonderful luncheon and a swap meet in a large tent shared by the Cream Separator gathering at the hotel. An outdoor barbecue is also planned.

Numerous Cream Separate Club displays with some most unusual and rare pieces will also be on exhibit. They will host a swap meet as well.

This is sure to be the nation's largest ever gathering of dairy and Divco truck aficionados. The event will provide a wonderful opportunity for members

Lucas Attends State Beef Council Director Orientation

DENVER, Colo. — David Lucas, a veal grower from Bernville, Pa. took part in a State Beef Council Director Orientation Session at the National Cattlemen's Beef Association's (NCBA) Denver office April 19-20.

Lucas attended the session to learn about current checkoff-funded programs and initiatives.

Information provided at the session should help Lucas represent and communicate with his state-level constituents.

Lucas serves on the board of the Pennsylvania Beef Council, the group charged with direct-

ing and investing half of all beef checkoff dollars collected in Pennsylvania.

State beef councils may invest a portion of their fifty cents in national and international programs to extend national efforts; therefore, state directors need to know how their state dollars are being coordinated with national dollars to meet consumer needs.

"Directors have a responsibility to represent their state's views in national checkoff efforts, as well as to carry information back to their home states about programs," said Steve Smola, NCBA Federation of State Beef Councils Division vice chair and host of the training session.

NCBA contracts on a non-profit basis with the Cattlemen's Beef Board (CBB) to conduct producer-directed checkoff programs on behalf of the industry. "Part of our role is to facilitate the coordination of programs and dollars between the state and national levels. This is one reason we host the director orientation - to keep communication flowing and keep us all on the same page," said Smola.

Lucas, along with other at-

tending state directors, heard program updates on all areas of national checkoff funding, including promotion, research, consumer information, industry information, foreign marketing, and producer communications. Directors were updated on the current checkoff-funded advertising campaign that is bringing the "Beef. It's What's for Dinner" convenience and nutrition message to beef's target audience - women ages 25-54.

Average Farm Feed Costs for Handy Reference

To help farmers across the state to have handy reference of commodity input costs in their feeding operations for DHIA record sheets or to develop livestock feed cost data, here's last week's average costs of various ingredients as compiled from regional reports across the state of Pennsylvania.

Remember, these are averages, so you will need to adjust your figures up or down according to your location and the quality of your crop.

- Corn, No.2y — 2.54 bu., 4.55 cwt.
- Wheat, No.2 — 2.34 bu., 3.91 cwt.
- Barley, No.3 — 1.81 bu., 3.87 cwt.
- Oats, No.2 — 1.58 bu., 4.93 cwt.
- Soybeans, No.1 — 5.16 bu., 8.61 cwt.
- Ear Corn — 77.12 ton, 3.86 cwt.
- Alfalfa Hay — 138.75 ton, 6.94 cwt.
- Mixed Hay — 132.25 ton, 6.61 cwt.
- Timothy Hay — 140.00 ton, 7.0 cwt.

SMELLS LIKE MONEY TO US

Used/Rental Liquid Manure Equipment

SPREADERS

2000 Houle 3,600 Gal w/23 1x26, Brakes, Rental Unit	CALL
2000 Houle 3,850 Gal w/23 1x26, Brakes, Lights, 1/4" Steel, Rental Unit	CALL
1999 Houle 4800 Gal w/28Lx26, 1/4" Steel, Brakes, Lights, Rental Unit	\$17,245
(2) Houle 6,300 Gal w/28Lx26, Brakes, Lights, Etc Both Are Rental Units	Call For More Info
Slurry Buggy, 2,600 Gal, Vacuum Tank, Good Shape	CALL
Balzer 3350 Vacuum .. .	\$15,900
Better Built 1100 gal Vacuum	\$1,750
Better Built 3150 gal, 21 5x16 1	Coming In \$3,750
Patz 3200 Gal Truck Mount, Good Shape	\$2,500

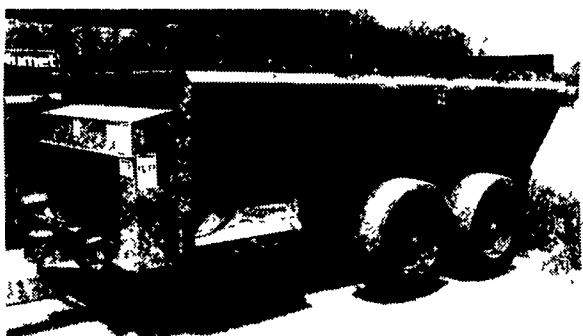
PUMPS

(2) Houle Maxi Pumps, 28"	CALL
Houle Irrigation Pumps, on trailers, hyd primers	CALL
Houle 32' and 42' Agi Pumps	\$7,500 to \$10,000
1998 Houle 8/12' Super Pump, Rental Unit	\$6,950
Husky 40' Lagoon Pump, Good Condition	\$5,000

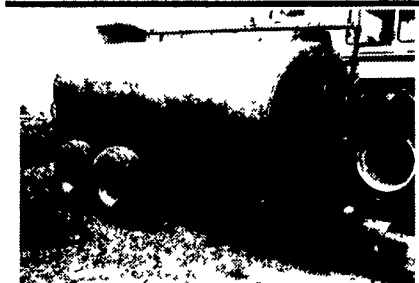
MISCELLANEOUS

Rubber Tire Scrapers, 3 pt & Skid Steer, Also Push Blades	
(2) CADMAN 2625 Hard Hose Reels	CALL
Long 1560 Irrigation Reel, 3-3/4" x 1200' Hose, Engine Drive, Manure or Water.	\$7,175
Kidd 6-10 Bale Chopper, Works in Dry Hay or Straw	\$4,950

This Week's Special



1998 KNIGHT 8024
19Lx16.1 Tires,
Needs Some Work
\$7,450



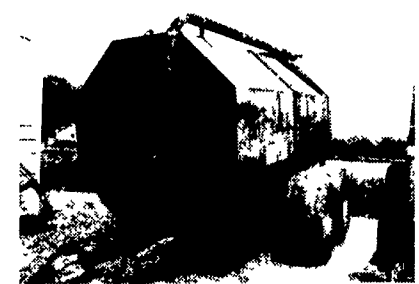
Badger 1500 Gal. Vacuum Tank, 10.00x15 Tires, Tank Solid...\$1,975



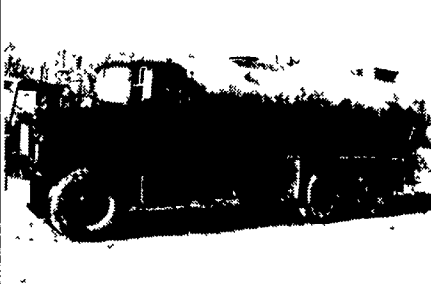
Slurry Buggy 2600 Gal. Vacuum Tank, 16.5x16.1 Tires, Good Cond..... CALL



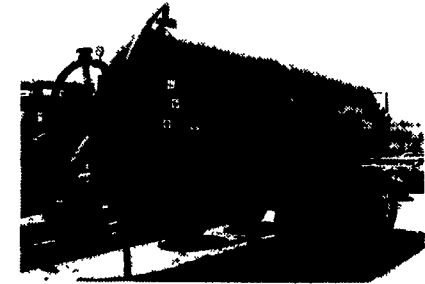
New Idea Model 3222 with Lid, Excellent Shape, 16.5x16.5 Tires..... \$10,950 Compare to New Price!



WIC 3600 Gal. 21.5x16.1 Tires Needs Paint but Tank is Solid \$3,350



DM Mack 4,500 Gal. Tank, Ready To Work..... CALL



Balzer 2250 Gal. Vacuum Tank w/21.5x16.1.....Rental Unit

Top Volume



Dealer
In North America

4019 Ashville Rd.,
Quarryville, PA 17566

800-222-2948 • 717-529-2782

MID-ATLANTIC

agrisystems



SUN AGRI™

Environmental solutions - Consulting & engineering

- 1 Compliance and permitting for air, water & soil
- 2 Dust and odor control - bag houses & cyclones
- 3 Liquid separation, drying, filtration and treatment
- 4 Fuel handling for solid, liquid, gaseous & waste fuel
- 5 Retrofit burners and controls for waste fuels.
- 6 Mobile incineration service. Meets DEP & EPA regs
- 7 Custom fabricated products for unusual applications

15 Pennwood Rd., Lebanon, PA 17042
Phone 717-274-3769 Fax 717-274-1668

Email terry@sunagri.com
Web site www.sunagri.com

FOR SALE PEANUT HULLS For BEDDING

Most effective
as bedding for all
kinds of beef and
dairy cattle, hogs,
horses, sheep and
poultry

Any amount delivered
or call for at farm.

Esbenshade Turkey Farm

(America's Oldest—Since 1858)
PO Box 337
Paradise, Pa.

(717) 687-7631

Alley Scrapers • Barn Cleaners • Piston Pumps • Separators • Tank Spreaders • Transfer Pumps • Agitators • Flush Valves • Flush Pumps

Alley Scrapers • Barn Cleaners • Piston Pumps • Separators • Tank Spreaders • Transfer Pumps • Agitators • Flush Valves • Flush Pumps