

7511 Allentown Blvd.
Harrisburg, PA 17112
**75 TRUCKS
IN STOCK**

**AFFORDABLE
CARS AND TRUCKS, INC.**

717-652-1925
FAX 717-652-4888
www.affordablecarandtruck.com

"You Gotta Believe!!"

Exit 27, Rt. 81; Rt. 22 East of Harrisburg; 3 Miles North of Hershey



97 Dodge Ram
4x4 SLT 1500
Series, V8, AT,
AC, Loaded,
100K Mi.
Flawless!
\$11,995

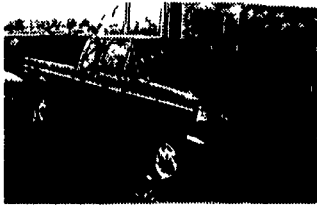
96 Ford F250
4x4 Ext. Cab,
351 AT, AC,
2 Tone Loaded,
Sharp Truck,
100K Mi.
\$13,995



92 Ford F250 XLT
Lariat Ext. Cab, 4x4, Int. Diesel,
7.3 AT, AC, Loaded w/2 Tone &
More, 80,000 Mi., Flawless
\$14,995



93 CHEV 3500 Series
4x4, 350, AT Loaded & Clean,
80,000 Mi. (1 With A/C, 1 w/o)
\$11,500 & \$12,500



96 Ford F250 XL 4x4 Ext.
Cab, 7.3 Power Stroke w/Rare
5 Sp. & Loaded, Absolutely
New Throughout, Guaranteed,
140K Mi. **\$17,900**



87 Ford 350 Cargo Van
6 Cyl. Automatic,
Well Maintained Sharp Van,
100K Mi. **\$3,995**



94 Chev 1500 Silverado
4x4, Ext. Longbed, All Black,
350 + Loaded, Extra Clean,
100K Mi. **\$12,995**



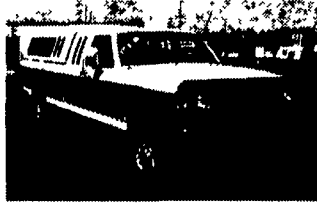
91 Ford F250 XLT Lariat
4x4, 351, AT, AC & Loaded Up,
Black & Beautiful, Mint Cond.
Truck, 100K Mi. **\$8,995**



90 Ford F350 4x4's XLT
(1) 7.3 Diesel, AT, (1) 460 V8
Gas, Stick, Either Truck Super
Clean & Sharp w/100K Mi.
\$8,995 Ea.



93 Dodge Power Ram 250
4x4, SLT Cummins Diesel,
5 Speed, AC & Loaded, Real
Clean PA 1 Owner, No Rust,
100K Mi. **\$10,500**



89 Ford F-350 XLT Lariat
4x4 7.3 Diesel, Ext. Cab, w/Leer
Cap & More, 411 Rears, AT,
Nice Clean Truck, 100K Mi.
\$10,995

MOTORS
New & Rebuilt
350, 366, 427, 454
6.2 Diesels
Rebuilt & Used
Will Install
717-762-6415

TRUCKERS
27' HD RATCHETS.....\$13.95
WINCH STRAPS.....\$12.95
RUBBER T. STRAPS.....54¢
REFLEXITE RED/WHITE TAPE.....82¢/Ft.
TIRONIE TARP
(800) 874-2928 • FAX: (570) 584-3127

B & B AUTO SALES

4X4's

- 98 Chev S-10 Blazer, 4 Dr., LS, 4 3 Vortec V6, Auto, PS, PB, A/C, CC, Tilt, PL, PW, Cass, 16,700 Mi., Black
- 97 Chev S-10 Blazer, 4 Dr., LT, Full Time 4WD, 4 3 Vortec V6, Auto, PS, PB, A/C, CC, Tilt, PL, PW, P. Seat, CD Player, Fact Sun Roof, Leather Int., Green/Silver
- 97 Chev S-10 Blazer, 4 Dr., LS, 4 3 Vortec V-6, Auto, PS, PB, A/C, CC, Tilt, PL, PW, Cass, P. Seat, 36,000 Mi., Black
- 97 Chev Ext. Cab Tk, 1/2 Ton, Silverado, 350 Vortec V-8, Auto, PS, PB, A/C, CC, Tilt, PL, PW, P. Mirrors, Cass, CD Player, Cap Black
- 95 Ford Bronco, XLT, 302 V8, Auto, PS, P.B., A/C, CC, Tilt, PL, PW, Cass Black
- 95 Jeep Gr. Cherokee Laredo, 4 Dr., 4.0 6 Cyl., Auto, PS, PB, A/C, CC, Tilt, PL, PW, Cass, Green
- 91 Jeep Cherokee Limited, 4 Dr., 4 0 6 Cyl., Auto, PS, PB, A/C, CC, Tilt, PL, PW, P. Seats, Cass, Leather Interior, 67,000 Mi., Charc
- 91 Chev Blazer, Scottsdale, 350 V8, Auto, PS, PB, A/C, Radio, 50,000 Mi., Blue
- 91 Chev Truck, 1/2 Ton, Silverado, 350 V8, Auto, PS, PB, A/C, CC, Tilt, PL, PW, AM/FM, Blk/Silver
- 90 Ford Bronco II, XLT, 2.9 V-6, Auto, PS, PB, A/C, CC, Tilt, PL, PW, Cass, White/Blue
- 90 Dodge Truck, 1/2 Ton, LE Power Ram, 318 V8, 4 Spd., PS, PB, A/C, PL, PW, AM/FM, Cap, 67,000 Mi., Blue
- 89 Chev Truck, 3/4 Ton, Silverado, 7200 GVW, 350 V8, Auto, PS, PB, A/C, CC, Tilt, Case, Fiberglass Cap, 1 Owner, 41,000 Mi., Burg/Silver
- 88 Chev Truck, 1/2 Ton, Silverado, 350 V8, Auto, PS, PB, A/C, CC, Tilt, PL, PW, AM/FM, Brown/Tan

2WDs

- 89 Masda Truck, SE-5, 2.2 4 Cyl., 5 Spd., PS, PB, AM/FM, Black
- 87 Chev S-10 Truck, Tahoe, 2.8 V-6, Auto, PS, PB, A/C, AM/FM, Blue

VANS

- 98 Ford Windstar GL, 3.8 V6, Auto, PS, PB, Dual Heat & A/C, CC, Tilt, PL, PW, Cass, Quad Seating, 32,000 Mi., White
- 93 Chev Astro CB, 4.3 V6, Auto, PS, PB, A/C, CC, Tilt, PL, PW, Cass, Blue
- 93 Chev Astro, Ext. LT, 4 3 V6, Auto, PS, PB, Dual A/C, CC, Tilt, PL, PW, Cass, Blue
- 97 Plymouth Voyager, 4 Dr., 3 0 V6, Auto, PS, PB, A/C, AM/FM, 35,000 Mi., Burg

TRUCK & VAN ACCESSORIES

B&B AUTO SALES
(717) 632-1343
2 1/2 Miles South of Hanover, On Rt. 94 (Baltimore Pike)
Hours: Mon., Tues., Thurs. 8-8; Wed. & Fri. 8-5; Sat. 8-12
Family Owned & Operated Since 1972

PICKUPS
VANS,
4 WHEEL
DRIVES

Warranty
Available
With Most
Vehicles

BRENNER

PHONE: 717-232-4271

www.brennerdodge.com Fax: 717-233-8221

RON JACKMAN

Business Account Manager

The New Commercial Sales Group

Harrisburg's Only BusinessLink Dealer

"Saving the Small Business
Owner Time, Money & Hassles"

RAY MARINO

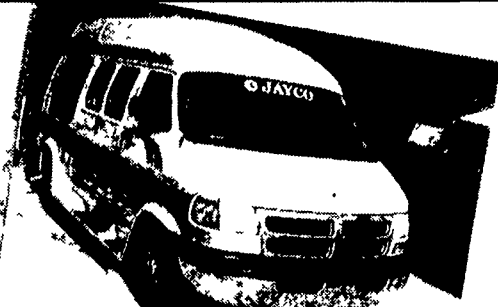
Business Link Account Manager



2000 DODGE 3500 QUAD CAB DUALY 4x4
Cummins Turbo Diesel, AT, A/C, SLT,



2000 DODGE RAM 3500 MAXI MOBILITY VAN
High Top with Flip Up Seats, 8 Passenger
or 4 Wheel Chair Passenger Positions



WEEKENDER SPECIAL
2000 DODGE JAYCO CONVERSION VAN
V8, TV, Sleeps, Lavatory and More!
10 Year Financing Available!



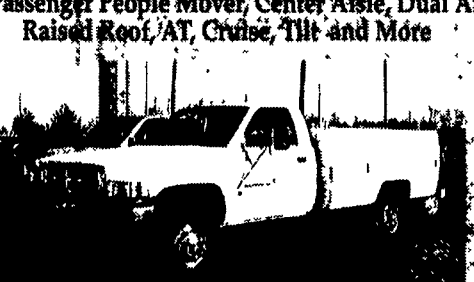
2000 DODGE RAM 3500 MAXI VAN
Only 4 Left, 15 Diesel, 2 Gas
All With AT



2000 DODGE RAM 3500 MAXI VAN
15 Passenger People Mover, Center Aisle, Dual Air,
Raised Roof/AT, Cruise, Tilt and More



2000 DODGE RAM 3500 4x4 DIESELS
With Stahl Utility Bodies & Plow Packages,
AT, AC, Gas



2000 DODGE RAM 2500 4x4
Snow Plow Prep Pkg., Super Work Truck