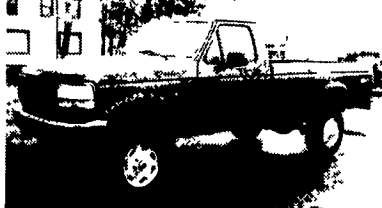


Int. Truck
Model 1954,
1989, GVW 32,800,
Only 111,000 Miles
w/Jerre-Dah
15 Ton Rollback
\$25,000
(215) 945-8305



96 DODGE 2500 4x4
 360FI, AT, A/C, AM/FM, Cass, Cruise,
 Tilt, 8800 GVW, PA Truck, 24,000 Mi.,
 Dk. Green & Silver
\$17,900



97 FORD F350 4x4, XL
 351 FI AT A/C AM/FM, 9,000 GVW
 4 10 Rear, 50,000 Mi. Dark Green
\$17,900

MARTIN'S AUTO SALES

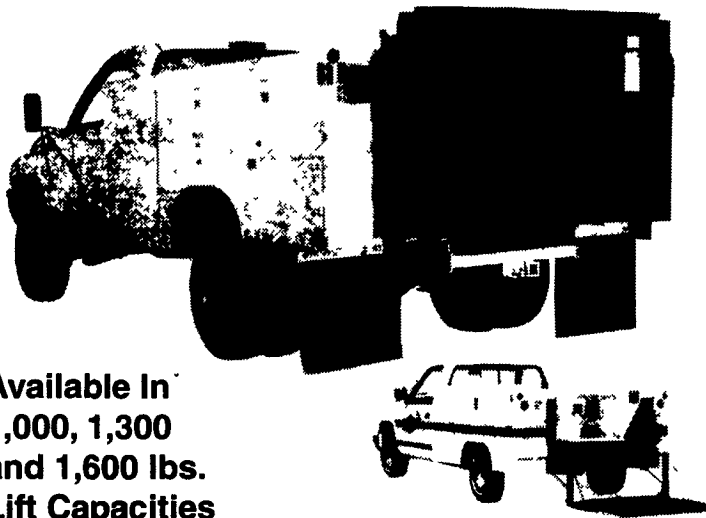
1025 W. Main St. New Holland, PA 17557
(717) 656-6621

(2) VAN TRAILERS
 28' Long, Can be used in a combination, A-1 cond.
570-739-2247

1990 Mercedes, 20' dry box, 33,000 GVW, 275,000 miles, 75,000 on new engine, 5 speed, A-1 cond.
570-739-2247

1987 International Tandem Axle
 4 Speed High & Low, 350 Cummins, 24' Dry Box, 48,000 GVW, 247,000 Miles, A-1 Cond.
570-739-2247

The original
TOMMY GATE
 hydraulic lift



Available In
1,000, 1,300
and 1,600 lbs.
Lift Capacities

Sold, Serviced & Installed at

ANNVILLE EQUIPMENT CO.

470 Palmyra Bellgrove Road Annville, PA 17003
717-867-4631 1-800-233-0520



Fontaine Elite Steel Drop Deck, 53'x102", HT-250 Wide Spread Suspension with Dump Valve, 10' Front Deck



Fontaine Infinity Combo Flats, 48'x102", INTRAX AA-250 Wide Spread Suspension with Dump Valve, Winch Track, Steel Wheels with Bridgestone R196, Alum Floor with 4 Nailers, Lifetime Beam Warranty



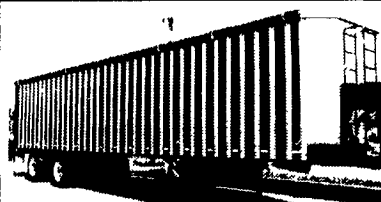
Year 2000 Ti-Brook Dump Trailer, 39' Frameless, Air Ride Spread Suspension with Lifiable Front Axle, 11R24 5 Tires, Aluminum Wheels, Two-Way Water Tight Tailgate



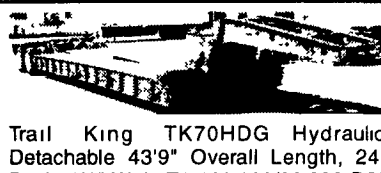
Year 2000 Ti-Brook Dump Trailer 34'x96" Alum Frame Dump, Air Ride Suspension, 11R24 5 Tires, Aluminum Wheels



Fontaine Elite Steel Flats, 48'x102", INTRAX AA-230 Wide Spread Suspension with Dump Valve, Alum Wheels & Bulkhead, Winch Track and Chain Tie Downs



Peerless, Open Top Design with Shurlock Roll Tarp, Stainless Steel Nose & Rear Doors, Air Ride Spread with Rear Axle Slide, Aluminum Wheels, Halico Live Floor



Trail King TK70HDG Hydraulic Detachable 43'9" Overall Length, 24' Deck, 8'6" Wide T1 100,000/80,000 PSI Yield Strength Steel Air Ride Suspension, 10'7" Hyd Gooseneck with 82" Swing Clearance

Additional Trailers In Stock, New & Used - Call For Special Pricing
TRI-STATE TRAILER SALES, INC. II

1690 Rohrerstown Road, Lancaster, PA 17604

1-800-347-7978

Or E-mail our Sales Dept. - lansale@tristatetrailer.com
 Visit us on the Web - www.tristatetrailer.com



96 FORD F350 CREW CAB DUALY
 4x4, 7.3 Power Stroke Diesel, XLT, AT, A/C, Most Options, Tool Boxes, 128,000 Miles, Looks & Runs Good, White, #F943



98 CHEV. 3500 CREW CAB DUALY
 2WD, 6.5 Turbo Diesel, 5-Spd., Silverado, A/C, Most Options, Burgundy, 50,000 Miles



95 CHEV. 3500 H.D.
 18 Ft. Cube Van, 14,100 GVW, 350 V8, AT, Side Door, 77,000 Miles, White, #C542



95 GMC TOPKICK LOW-PRO
 19' Aluminum Roll Back w/Wheel Lift, 210HP Cat Diesel, 6 Cyl., PS, PB, A/C, 5 Sp., 18,000 GVW, Exc. Cond.



93 CHEV. K3500 CREW CAB DUALY
 4x4, 6.5 Turbo Diesel, AT, A/C, C. T. Blue, 140,000 Miles, Looks & Runs Good, #C560



96 CHEV 2500 EXT. CAB 4x4
 6.5 Turbo Diesel, 5 Spd., A/C, Cruise, 67,000 Miles, Teal, #C555

OVER 120 TRUCKS

Preferred Warranties Available on Most Trucks

Bobby Gerhart's

Truck World

Mon. - Fri. 9-8, Sat. 9-3

2400
 E. Cumberland St.
 Rt. 422
 Lebanon, PA
 17042
717-273-7995



97 FORD F250 SUPER CAB 4X4
 Powerstroke Diesel, 5 Speed, XLT Pkg., Alum. Wheels, 32,000 Miles, White w/Grey Int. #F913



95 FORD F350 SUPER CAB DUALY
 AT, 460 EFI, XLT, A/C, Most Options, 57,000 Miles, Dk. Green #D871



96 FORD F250 XL, Trim 4x4, Powerstroke Diesel, 5 Sp., A/C, AM/FM Cass, Dual Tanks, 83,000 mi., Red, #F909



95 FORD F350 4X4, Power Stroke Diesel, XLT, AT, A/C, Most Options, CD Player, Power Angle Plow, Black & Silver, 58,000 Miles, #F934



87 FORD F700 WALK-IN UTILITY BODY
 Under CDL, 8.2 Diesel, Allison AT, New Inspection, White, Call For Information



97 DODGE RAM 3500 CLUB CAB DUALY 4x4
 Cummins Turbo Diesel, Laramie SLT, AT, A/C, Most Options, Power Seat, White, 56,500 Miles #D309



97 DODGE RAM 2500 CLUB CAB 4X4
 Cummins Turbo Diesel, AT, A/C, Cass., Red & Silver, 44,000 Miles, #D306



96 DODGE RAM 2500 4X4
 Cummins Turbo Diesel, AT, A/C, SLT - Most Options, Maroon & Silver, 90,000 Miles, Excellent Condition, #D312



94 DODGE RAM 2500 4x4
 Cummins Turbo Diesel, AT, A/C, Most Options, 73,000 Miles, Black, #D308



95 CHEV. 3500 CONTRACTOR DUMP, AT, 350 V8, 10 FL Body, White, 59,000 Miles, #C533



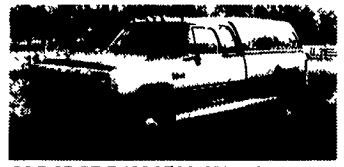
5 Spd. Diesel
96 DODGE RAM 2500 ST CLUB CAB 4X4
 Cummins Turbo Diesel, 5-Spd., Cass., A/C, 68,000 Miles, Black D305



96 DODGE RAM 2500 CLUB CAB 4X4
 Cummins Turbo Diesel, AT, A/C, Laramie SLT, Most Options, 87,000 Miles, White, #D310



94 CHEV 3500 H.D. w/9 FT. UTILITY BODY, 6.5 Turbo Diesel, AT, A/C, AM/FM, 15,000 GVW, 31,000 Miles, White #C561



93 DODGE RAM 3500 CLUB CAB 4x4, LE, Cummins Turbo Diesel, AT, A/C, C. T. 79,000 Miles, Red & White



95 CHEV. KODIAK DUMP
 366, 4 Spd., Allison Trans., AT, PS, PB, 25,950 GVW, Good Tires and Inspected, Ex. Cond., Ready To Work, 2 To Choose From



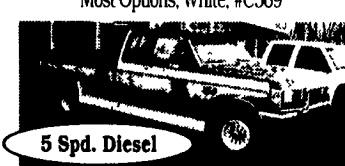
96 FORD F250 CREW CAB 4x4
 Power Stroke Diesel, XLT AT A/C, Most Options Dk Green & Teal, Short Bed, 79,000 Miles



98 CHEV. K2500 EXT. CAB 4X4
 6.5 Turbo Diesel, Short Bed, AT, A/C, PS, PB, Cheyenne Pkg., White - 2 To Choose From -



98 CHEV. K2500 EXT. CAB 4X4
 6.5 Turbo Diesel, Silverado, AT, A/C, CD, Most Options, White, #C569



5 Spd. Diesel
90 FORD F250 SUPER CAB 4X4
 7.3 Diesel, 5-Spd., Centurion Conversion Pkg., A/C, Most Options, 120,000 Miles Blue & Silver (Very Nice) #F929



89 FORD E250 12-PASSENGER CLUB WAGON
 XLT, AT, Dual A/C, 148,000 Miles, Blue & Tan, Looks & Runs Good



88 CHEV 3-3 CREW CAB DUALY
 w/18 ft. Ramp Body & Tow Bar, Silverado, White, 454 V8, AT, A/C, Most Options Over 100,000 Miles, Extremely Well Maintained