

# ISUZU TRUCKS of READING

4225 Pottsville Pike (Rt. 61) Reading, PA

610-945-6433 or 800-485-2856

**Sales - Parts & Service Hours:**  
 Mon-Thurs. 7:30-6:00; Friday 7:30-5:00  
 Parts & Shop; Saturday 8:00-12 Noon



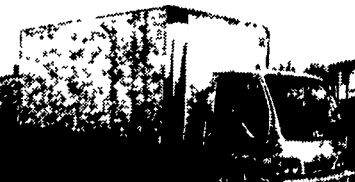
**THE NPR**, - Diesel w/Automatic Transmission w/14' Aluminum Van and Liftgate Capable of Hauling up to 6,800 lbs. Includes A/C, AM-FM Cassette  
**Weekly Rates: \$240 plus \$.09 per mile**  
**Daily Rates: \$50 plus \$.09 per mile**  
 Call For Details



**1994 VOLVO WIA64TES**  
 60" Flat Top, Integral/Sleeper S-60 425 HP w/Jake, 13 Speed Trans., Air Suspension, A/C, Full Instrumentation  
 Call Larry Hall **\$21,900**



**"NEW" 2000 ISUZU FTR 51**  
 200 HP Diesel, Auto, 24 Ft Morgan Body w/Lift Gate, A/C, AM/FM/Cass, Stereo, 25,950 GVW, Under CDL  
**CALL DENNIS FOR DETAILS**



**(2) "NEW" 2000 ISUZU NPR**  
 16 ft Supreme Vans, 1-Gas, 1-Diesel, Auto, A/C, AM/FM/Cass, Stereo, 14,500 GVW  
**CALL DENNIS FOR DETAILS**  
 We Will Not Be Undersold!

## TRUCK CAPS • BED LINERS COMPLETE SERVICE DEPARTMENT

**Apple Auto Sales, Inc.**  
 Prouned Cars & Trucks  
 Route 30 - Lincoln Highway East, Gap, PA 17527  
 717-442-9700 • 717-299-9900 • FAX 717-442-3140  
 Email: contactus@appleautosales.com Web: www.appleautosales.com

**1995 CHEVY 3500**,  
 12 ft. Stakebody,  
 454 V8,  
 AT, PS, PB, A/C,  
 Rear Lift Gate,  
 15,000 GVW,  
 65,000 Mi.



- 1999 CHEVY 3500 CUBE TRUCK**, 350 V8, AT, PS, PB, Tilt, AM/FM/Cass., A/C, Dual Tanks, 11,000 GVW 12 Ft., box w/storage. (2 to choose from)
- 1999 Dodge Ram 3500**, Dually 4x4, 10' Dump, Cummins 6 Cyl., 5 Spd., PS, PB, AM/FM/CD, A/C w/Plow & Salt Spreader
- 1999 Ford F-350 X-Cab Dually**, V10 Triton / Auto O.D., PS, PB, PW, PL, PM, Cruise, Tilt, Delay, AM/FM/Cass, A/C, Sliding Rear Glass, 4x4, 4-doors
- 1990 Ford F-250 X-Cab Diesel**, 7.3 Lt. V8 Diesel / Auto O.D., PS, PB, PW, PL, Cruise, Tilt, Delay, Dual Tanks, A/C, Sliding R. Glass, AM/FM/Cass, 8,800 GVW, 4x4, Long Bed.
- 1999 Ford F-350 Crew Cab Dually**, 4x4, 11,200 GVW, 7.3 Power Stroke Diesel, AT, PS, PB, PW, PL, P. Mirrors, A/C, Cruise, Tilt, Delay, AM/FM/CD & Cass.

**LIFETIME FREE INSPECTIONS • BUY & SELL**

'93 Volvo, 60 series Detroit, 430hp, 10 spd, 64" integral sleeper, well maintained, good mechanical cond, getting out of trucking, \$15,000 firm. 1-800-549-3413 ask for Alan

'98 Dodge Ram 1500, 4x4, 360 V8, HD service, trailer tow pkg, straight sale price \$17,390. 717-626-8551

Lancaster Farming, Saturday, May 20, 2000-D39

'79 Mack R487, 210hp, 10sp Fuller, 48,000 GVW, 20' dump, w/side kit, \$10,000 OBO. 717-786-0934.

Southwest box trailer, 2-3 yrs old, ramps back & side doors, good for landscaping, price neg. 973-579-3595.

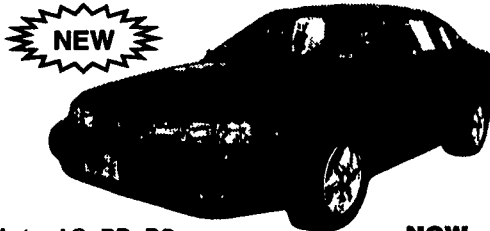
# THE HONDRU EXPERIENCE

OVER 200 TRUCKS AVAILABLE FROM OUR 4 DEALERSHIPS

## E-TOWN CHEVROLET

Oldsmobile Pontiac  
 Route 230 E-Town • 717-361-7776

### 1999 OLDS ALERO

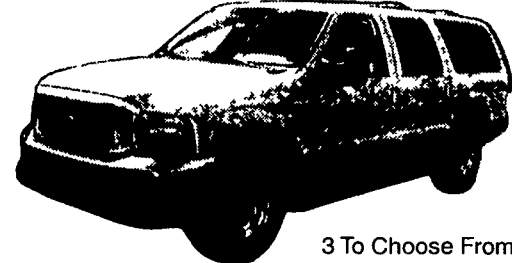


Auto, AC, PB, PS, PW & L **NOW**  
 Was \$19,135 **\$16,298**

- 98 Subaru Legacy, Equipped, 27,000 Miles
- 98 Chevy K1500, V8, PW&L, Auto, AC, Tilt, Cruise
- 98 Olds Intrigue LG, 6 Cyl, Auto, AC, PW&L, T&C, 19,000 Miles
- 98 Chevy Corvette Coupe, Auto
- 97 Dodge Ram 2500 Club Cab, 4x4, Diesel, 5 Speed, SLT
- 97 Olds Cutlass Supreme 6 Cyl, Auto, AC, PW&L, T&C
- 95 Chevy K1500 Ext Cab, V-8, Auto, Equipped

## PHILLIPS FORD

Route 72 Manheim • 717-665-3551  
**2000 FORD EXCURSION DIESEL, 4WD**



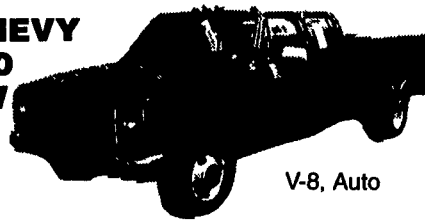
3 To Choose From

- 99 Ford F350 Crew Cab #OF625A
- 99 Ford F150 Super Cab, 4x4 #IF002A
- 99 Ford Taurus Sedan - 5 To Choose From
- 99 Ford F150 Super Cab 4x2 #OF52A
- 99 Dodge Ram 1500, SLT 4x4 #OF046A
- 91 Ford E250 12 Pass Van #OF533B
- 91 Ford F150, Super Cab 4x4 #OF641A

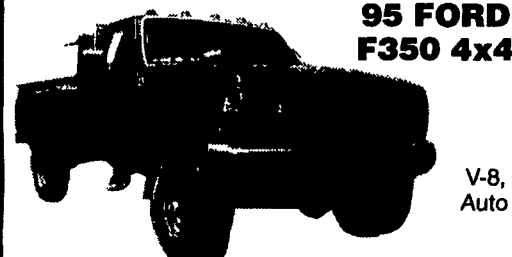
## E-TOWN DODGE

Route 230 E-Town • 717-367-6644

**91 CHEVY C3500 CREW CAB**



V-8, Auto



**95 FORD F350 4x4**

V-8, Auto

All prices include Rebates, Exclude Tax, Tag and \$40 Dock Fee

## LOADS OF USED PICKUPS CALL ANY STORE FOR DETAILS

Email - hondruauto@aol.com

OVER 20 CHASSIS IMMEDIATELY AVAILABLE FOR BODY INSTALLATION AT OUR LOCAL BODY COMPANIES!

## MANHEIM CHRYSLER PLYMOUTH GMC

Route 72 Manheim • 717-665-2473  
**1997 GMC EXT CAB SIERRA**



V-8, Auto, AC, PS, PB, PW&L, Tilt, Cruise

- 98 Ford Expedition Auto AC PS, PW & L, T&C AM-FM Cassette
- 98 Chevy 1500, V-8, Auto, PS, AC, PW & L, T & C
- 97 Dodge Ram 1500 V-8, Auto, AC, PS, PW & L, T & C Cassette
- 97 Isuzu Hombre, 5 Speed, AC, PS, PB, Cassette
- 97 Chevy Tahoe, Auto, AC, PW & L, T&C, AM-FM Cassette
- 94 Chevy S-10 5 Speed, PS, PB, Alum Wheels

# AL HAMILTON USED TRUCK SALES

P.O. Box 157 • 55 Doe Run Road • Manheim, PA 17545

Phone: 717-665-7145 • Fax 717-665-2137

★★ "CLEANEST TRUCKS AROUND" ★★

SUMMER SALE All Prices Reduced!



**1993 Int. 4900 C&C**  
 DT 466, 6 Spd. Trans., Custom Int., A/C, 32,000 GVW, 254 WB, 186 C.A. **\$19,500**



**1994 Int. 4900 C&C**  
 DT 466, 6 Spd., Trans., 32,000 GVW, Custom Int., A/C, 254 WB, 186 C.A. **\$21,500**



**1979 Ford LN 700**  
 10' Dump, 370 Gas, 5 Sp. Trans, 2 Sp. Rear, Hyd. Brakes **\$5,500**



**1985 Ford F-700**  
 370 Gas, 5 Spd. Trans, 2 Spd Rear, Hyd Brakes  
 • 21' Eby Cattle Body **\$10,500**



**1980 Ford LT 9000**  
 Heavy Spec Truck, 238 Detroit, 13 Spd. Trans, Heavy Spec. 18' Flat Dump **\$16,500**



**1989 G.M.C. 6000 C&C**  
 350 Gas, 4 Spd. Trans, Hyd Brakes, Low Miles, 150" W.B., 84" C.A. **\$4,500**



**1986 Ford LN 8000**  
 16' Flat Dump, 3208 Cat, 210 HP, 5 Spd. Trans, 2 Spd. Rear, Custom Int., 33,000 GVW **\$19,500**



**1994 Ford F-700 C&C**  
 429 Gas, 5 Spd. Trans, Air Brakes, 14,00 Miles Actual, 207" W.B., 140" C.A, Like New **\$19,500**



**1989 Ford LN 8000 C&C**  
 7.8 Diesel, 240 Hp, 6 Spd. Trans, Custom Int., 234" W.B. 165" C.A. **\$16,500**



**1986 Ford LN 8000 C&C**  
 3208T, 250 HP, 5 Spd Trans, 2 Spd Rear, Custom Int., 222" WB, 156" C.A **\$15,500**



**1995 FORD LN 8000**  
 8.3 Cummins, 210 HP, 6 Spd. Trans, P.S., A/C, New 11' Dump Body, 35,000 G.V.W. **\$28,500**



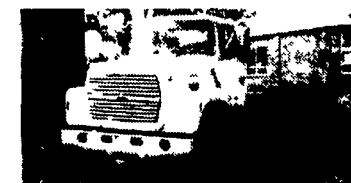
**1990 Ford F700 20' Flat Bed**  
 w/Lift Gate, 429 Gas, 5 Spd., Trans., Hyd. Brakes, 23,100 GVW, 39,000 Actual Miles **\$12,900**



**1992 Ford LN 8000 C&C**  
 7.8 Ford Diesel, 210 HP, 6 Spd. Trans, Custom Int., 234 W.B., 168 C.A. 33,000 G.V.W. **\$18,500**



**1994 Int. 4700 C&C**  
 Low Profile, DT-408, 190 HP, 6+1 Trans., Hyd. Brakes, A/C, 175 W.B., 108 C.A., 25,000 G.V.W. **\$20,500**



**1995 Ford LN 8000 C&C**  
 8.3 Cummins, 210 HP, Custom Int., A/C, 260 W.B., 192 C.A. 35,000 G.V.W. **\$23,500**