



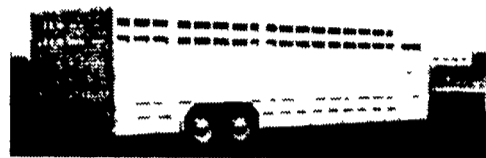
**1994 PETERBILT MODEL 377**

48" Stand Up Unibilt Sleeper, 3176 350 HP Cat Engine, RTX 13710C Transmission, Wet Line System Available, 784,358 Total Miles, All Maintenance Records Available Since New

**Price \$21,900**

Ask For JR 717-354-4061

**Featherlite Trailers**



Model 8200 - 8' x 28' stock trailers Available In Many Sizes

**All Aluminum • 6 Year Warranty Titan Flat Beds**

**Pine Shavings Peanut Hulls**

**48' Self Unloading Trailers**



**HUFFMAN**

TRAILER SALES AND LITTER SERVICE INC.

4124 North Valley Pike Harrisonburg, VA 22802

**Phone 1-800-825-2545**

**BIRCHWOOD AUTO SALES 717/949-6513**

**! Birchwood Bonus Buy !**

1996 FORD F150 XL SPORT, 300 6 Cyl., 4x4, Cass, 5 Spd, Alloys, Maroon w/Grey, 70,000 Miles..... Was \$12,900 Now \$11,700

1998 DODGE SLT LARAMIE 2500, Cummins Diesel, 2WD, AT, AC, PW, PL, PW Mirrors, Tilt Cruise, Factory Warr., 47,000 Miles..... \$19,900

1997 DODGE RAM 2500, SLT Laramie, 4x4, Excab, 360, AT, AC, PW, PL, Tilt, Cass., PW Mirrors, Cruise, Alloys, Blue, 54,000 Miles..... \$18,900

1996 GMC 1500 SLE Z71, 4x4, 350 V8, AT, AC, P W, PL, Cass, CD, Tilt, Cruise, Alloys, Black, 86,000 Miles..... \$13,900

1995 NISSAN XE, 4x4, 4 Cyl., 5 Spd., AC, Cass, PW, Mirrors, Alloys, Sliding Rear Window, 65,000 Miles, Sharp Red Truck!..... \$7,900

1994 CHEVROLET 1500 CENTURION CONV., 4x4, Ex. Cab, 350, AT, AC, PW, PL, Tilt, Cass., Leather, Alloys, 88,000 Miles..... \$13,900

1993 FORD F150 XL 4x4, 302 V8, AT, AM/FM, Dual Tanks, Alloys, Chrome Sliding Rear Window, 84,000 Miles, Blue..... \$8,900

1993 FORD XL SUPER DUTY, 2WD, Diesel, 5 Spd., AM/FM, Dual Tanks, White, 113,000 Miles, Blue. \$8,900

1984 FORD F150 2WD, 3 Spd., 300 6 Cyl., Local Trade, Blue..... \$1,900

**SUV's**

1998 CHEVY BLAZER LS, 4 3 V6, 4DR, 4x4, AT, AC, PW, PL, Alloys, Tilt, Cruise, PW Mirrors, Cass, 2 To Choose From, Starting At \$15,900

1996 FORD EXPLORER XLT, 4 0 V6, 4x4, 4 Dr., AT, AC, PW, PL, Tilt, Cruise, Alloys, Cass, PW Mirrors, Blue, 79,000 Miles \$13,900

1995 ISUZU RODEO 4 DR., 4x4, V6, AT, AC, PW, PL, PW Mirrors, Cass, CD, Tilt, Cruise, Airbags, Red, 59,000 Miles \$11,900

1993 MAZDA MPV AWD, V6, At, AC, PW, Cass, Tan, 55,000 Miles \$8,900

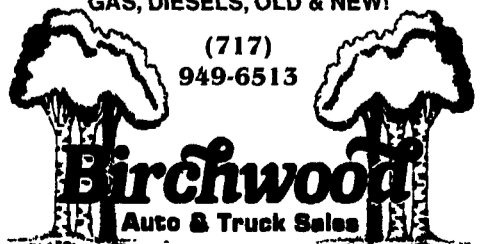
**CAMPERS**

1992 SUNLINE CAMPER, 23 ft., Sleeps 7, Excellent Condition \$6,500

1984 Pace Arrow Motor Home, Chevy Chassis, 454 V8, 34', 33,000 Miles, Beautiful..... \$16,500

**!WE ALSO BUY TRUCKS: GAS, DIESELS, OLD & NEW!**

(717) 949-6513



Schaefferstown, PA

**East Coast Trailers Honesdale, PA**



25' 20,000 lb. gooseneck.....\$5,395  
24' 14,000 lb. gooseneck.....\$3,495

**570-729-8870**



**1981 Mack**

300 engine, 5-speed, inspected till Oct., 2000, Good running truck

Cheap **\$3,900**

**717/684-6680**

- 1) 1971 International 10 Wheeler Truck M Series 238 Detroit - 15 Speed Road Ranger \$4,000
- 2) 1965 R Model 10 Wheeler Truck, Alum. Body 237 Engine, 15 Speed Transmission \$7,000
- 3) 1975 U Model 10 Wheeler Truck 237 9 Speed Transmission \$7,000
- 4) 1976 International Gas Truck Plow & Spreader Hopper Type 549 Engine 2 Speed Rear \$1,000
- 5) (2) Cat 966 B Rubber Tire Front End Loader w/Cab \$14,000 each
- 6) 1960 Mack Truck V8 Cummins Engine, Long Frame w/Storage Box Mounted On Back \$2,250
- 7) 35' Storage Trailer w/Side Door \$450
- 8) 600 Grader Auto. Transmission Cummins Diesel, Needs Head Gasket, Has New Tires \$4,500
- 9) 18' Steel Dump Body, Needs Floor \$400

For Information Call **610 • 869 • 8971**

**USED TRUCKS & CARS**

79 FORD F-700 370 4 Bri, 650 Allison, AT, 4WD, Dual Rear, Crew Cab, 27,500 GVW, Air Brakes, Insp., New Tires on Front \$7,500 Will Finance w/30% Down

94 Mazda B4000, 4x4, V6, 5 Sp, AM/FM CD, PS, PB, PL, PW, A/C, Tilt, 6 mo., 6500 mi warranty \$10,450 or \$3,135 Down

78 Ford, was school bus, now fitted as a truck, includes shelving Can be used for route sales, good vehicle for hunting camp \$350 \$350 \$800

84 Bronco II, 4 Cyl AT, Sunroof, 4WD \$3,450 or \$1,035 Down

94 Dodge B350 Van, 15 Passenger, All Power \$8,850

1996 Moritz Drop Deck Gooseneck Trailer 2 Axle 14 000 GVW \$4,200 or \$1,260 Down

**Dozens of Cars & Trucks - Call For Complete Listing**

87 Dodge Dakota, Long Bed, 4Cyl, 5 Sp \$3,150 or \$945 Down

84 Ford Ranger Long Bed w/Cap, 4 Cyl, AT \$2,450 or \$735 Down

92 Dodge Dakota V6, AT, PS, PB, 3 Mo 3500 Mi. Warranty \$6,850 or \$2,055 Down

89 Mazda B2200 Short Bed 4 Cyl., 5 Sp., 3 Mo. 3500 Mi Warranty \$3,250 or \$975 Down

Vans Available For Amish Hauling. Cars, Trucks & Vans in Every Price Range Financing Available. Tag, Title & Notary Service

**CAR CORRAL**

925 Robert Fulton Hwy Quarryville, PA 17566 **717-786-5131** Mon-Thurs 9-8 Fri 9-9 Sat 9-5

STOCK GOOSENECK 16x6x6", STOCK BUMPER 16x6x6" 3 HORSE SLANT OPEN STOCK w/ dressing rm & rear tack. Used 2 horse 1986, call for pricing. New & Used trailers available. NETCO Trailer Sales, 410-838-1282.

'99 Dodge 3500 15 pass, 360 auto, PS, PB, PW, PDL, cruise, tilt, dual air, AM-FM cassette, privacy glass, 16,000 miles w/ balance of factory warranty, black, \$20,500. 717-733-2873

'99 Dodge 3500, 15 pass., 5.9 Magnum, auto, PS, PB, PW, PM, PDL, cruise, tilt, dual air, AM-FM cassette, privacy glass, dark green, 25,000 miles w/ balance of factory warranty, \$19,900. 717-733-2873

MACK PARTS FOR SALE: Engines, blocks, heads & cranks, cabs, hoods & doors, trans, rears. ALL MACK PARTS. REASONABLE PRICES. MACK TRUCKS BOUGHT (complete or parts). 1-888-625-6485

'92 Dodge Dakota LE, long bed, 4x4, 3.9 Magnum, V6, 5 spd, PS, PB, AM-FM cass., Michelin radials, one owner, ex. cond., \$6,900. 717-733-2873

'94 Dodge LE 150 short whl. base, 8 pass., 318 magnum, auto, PS, PB, PW, PDL, cruise, tilt, air, AM-FM cassette, privacy glass, 61,000 miles, excellent condition, \$9,950. 717-733-2873



**FOR SALE**

**1974 Mack Flatbed, 33,000 GVW, 237 Engine, 190,000 Miles, 5 Speed, Power Steering, No Rust, Air Seat, Good Tires, Ready For The Road \$5,000 Or Best Offer Cal Dale 1-888-387-2510**

**CASH FOR USED DIESEL TRUCKS!**

- WE NEED 1/2 TON TO ONE TON:
- FORD DIESELS
  - SUPERCABS
  - CREW CABS
  - DODGE CUMMINS
  - 2WD OR 4X4
  - DUALIES
  - DUMPS
  - UTILITY BODY
  - FLAT BEDS
  - CAB & CHASSIS
  - SUPER DUTIES

**LOW MILEAGE ONLY PLEASE**

Before you sell or trade your diesel In somewhere else for LESS.

CALL US! We Pay More for Used Diesel Trucks Than Anyone. 717-949-2000 TRY US!

or 610-678-3243 Ask for Smokey or Kay **KELLER BROS.** RD 7, Box 405 Lebanon, PA 17042

**Woodcrest Motors**

SPECIALIZING IN TRUCKS & VANS

1200 North Reading Rd., (Rt. 272) Stevens, (Lancaster Co.) PA 17578

**717-336-3130**



95 CHEVY 1500 EXT. CAB 4x4 6.5 Diesel, 5 Spd., A/C, Lt. Blue, 75,000 Miles



94 FORD F150 XLT 4x4 V8, 5-Spd., Black, 57,000 Mi. SPECIAL \$10,995



92 CHEV S-10 EXT. CAB, TAHOE V6, 5-Spd., AC, 75,000 Miles \$5,995



92 CHEV 2500 UTILITY V8, AT, A/C, Red, 55,000 Miles \$9,500

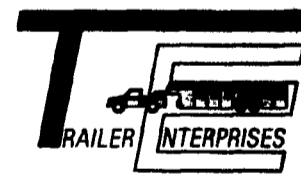


96 DODGE DAKOTA CLUB CAB SLT 4x4, V6, AT, A/C, 81,000 Miles, Maroon \$10,995



98 GMC SIERRA 1500 SLE Extend Cab, 4x4, 350 Vortec, 5-Spd., Most Options, 86,000 Miles. Dk. Red. \$17,300

"Revvin' to take care of ALL your trailer needs."



**HAS BUILT A REPUTATION . . . .**



United Expressline 8x16 Cargo

Moritz CBS 616

EBY Aluminum 7x20 Gooseneck

**NEW & USED: STOCK - HORSE - CARGO - INDUSTRIAL - UTILITY - CAR HAULERS**

Trailer Enterprises is here to serve you. We are a full service facility providing YOU with the very best service available in the industry!

**TRAILER ENTERPRISES, INC.**

13121 MAUGANSVILLE ROAD HAGERSTOWN, MD 21740

Just give us a call at (301) 791-5343.

Hours: 8AM-5PM Monday-Friday 9AM-12 Noon - Saturday