

**JUNE 3, 2000
SATURDAY 10:00 A.M.
2nd Spring Heifer Sale**



800 - 1000 Head Sell!

Sale Managed By
New Holland Sales Stables, Inc.
Farm 717-351-1311 Fax 355-0706 Home 717-391-8535
Norman & David Kolb, Mgrs. 61L

Public Auction Register

Closing Date Monday 5:00 P.M.
of each week's publication
Internet Sale Register will be updated
every Sat. at 2:23 P.M.

ATTENTION Auctioneers
All sales register info needs complete address,
street, town, county & state.

SAT JULY 15- Furniture, HH goods, 1997 Chevy car, 335 Clay School Rd., West of Ephrata, Clay Township by Lydia Burkholder Estate Aaron E Martin Auction Service
SAT JULY 15- 9AM 5 JD Tractors, excellent line of farm machinery located at 10679 Junction Road, Manheim, Pa By John F and S Lorraine Cassel Witman Aucts
TUES, JULY 18 - Fat Cattle Sale, Carlisle Livestock Market, Inc, 548 Alexander Spring Road, Carlisle, PA
TUES, JULY 18 - 7 45PM Feeder Cattle Sale Carlisle Livestock Market, Inc 548 Alexander Spring Rd., Carlisle, PA
WED JULY 19 & THURS, JULY 20 - 8:30AM Wed Lawn & Garden Tractors, misc items Thurs Misc items, tires, posts, etc Farm Equip & tractors 6 miles S of Chambersburg, Pa 1 mi E of manon, just E off I-81 at Manon along Rt 914 Manon Auction Service
SAT JULY 22 - Real estate, antiques, HH goods, 841 Rothsville Rd., Rt 772, between Rothsville & Litz By Phares M Weaver Estate Aaron E Martin, Auct Service
SAT JULY 22 - 8 30AM - Horse 10AM Mel's Stables, 834 Wallace Rd., New Holland, PA Mel Hoover, Auctioneer
WED JULY 22 - 9AM 2.5 Acre country property with 2 separate deeds, Warwick Twp Along Rt 772 between Rothsville & Litz, Lanc Co., Pa By Phares M Weaver Estate Aaron E Martin, auct
WED, JULY 26 - 9AM Farm Equip, Tractors, Truck Lots To be held at Wolgemuth Auction, 109 N Maple Ave., Leola, Lanc Co., Pa 717-656-2947
FRI, JULY 28 - 1PM State Graded Feeder Pig Sales Carlisle Livestock Market, Inc 548 Alexander Spring Road, Carlisle, Pa
SAT JULY 29 - Horse Sale 8 30AM, 11 AM Horses Middleburg Livestock Auction Sales Inc, Middleburg, Pa

Alexander Spring Road, Carlisle, Pa
FRI AUG 11 - 7PM Dairy Sale Middleburg Livestock Auction Sales, Inc, Middleburg, Pa
FRI AUG 11 & SAT AUG 12 - Lebanon Area Fairgrounds, Leb Pa Coackes, carriages & sleighs Martin's Aucts
SAT AUG 12 - Real Estate & Personal property 5 1/2 +/- acre property w/stone ranch style home, shop & chicken house, collectibles At 1769 Spring Hollow Rd., East Earl, Pa By Carolyn Hammond Horning Farm Agency 610-286-5183
SAT, AUG 12 - 9AM Real Estate & Personal Property - 5-1/2 +/- acre property w/stone ranch home, shop & chicken house in

Dairy and Livestock Sales

sep parcels HH Goods, Antiques & Coll 1769 Spring Hollow Rd., East Earl, By Carolyn Hammond, Horning Farm Agency, Inc
TUES, AUG 15 - Fat Cattle Sale, Carlisle Livestock Market, Inc, 548 Alexander Spring Road, Carlisle, PA
TUES, AUG 15 - 7 45PM Feeder Cattle Sale Carlisle Livestock Market, Inc 548 Alexander Spring Rd., Carlisle, PA
WED AUG 16 & THURS, AUG 17 - 8 30AM Wed Lawn & Garden Tractors, misc items Thurs Misc items, tires, posts, etc Farm Equip & tractors 6 miles S of Chambersburg, Pa 1 mi E of manon, just E off I-81 at Manon along Rt 914 Manon Auction Service
FRI, AUG 18 - Bill Wright & Steve Rishman, Preble, NY - Registered Holstein Milking Herd & Bred Heifer Dispersal By King's Auctions, Inc., Landisburg, PA and Woods Auction Svc
FRI AUG 18 - Feeder Sale 7PM Middleburg Livestock Auction Sales, Inc, Middleburg, Pa
FRI AUG 18 - 7 PM Horse Sale, New Holland Sales Stables, 101 W Fulton St., New Holland, Pa
WED, AUG 23 - 9AM Farm Equip, Tractors, Truck Lots To be held at Wolgemuth Auction, 109 N Maple Ave., Leola, Lanc Co., Pa 717-656-2947
WED, AUG 23 - Clyde Kuhns, Chambersburg, PA Farm Machinery By King's Auctions, Inc., Landisburg, PA
FRI, AUG 25 - 1PM State Graded Feeder Pig Sales Carlisle Livestock Market, Inc 548 Alexander Spring Road, Carlisle, Pa
SAT AUG 26 - Horse Sale 8 30AM Tack, 11AM Horses Middleburg Livestock Auction Sales Inc Middleburg, Pa
SAT, AUG 26 - Dave Longacre, Doylesburg, PA - Farm Machinery By King's Auctions, Inc Landisburg, PA
TUES AUG 29 - 11AM Troupsburg, Steuben Co., NY Dairy herd and farm machinery auction for Jack and Colleen Button Pirruco Aucts

**Middleburg Livestock Auction Sales, Inc.
Feeder Cattle Sale
Fri., May 19, 2000 @ 7:00 PM**

Selling for Donald Slusser - Columbia County

Simmental X Herd Consisting Of:
19 Brood Cows - bred for fall calving
1 Stock Bull
Several Bred Heifers - Bred for fall calving
12 Feeders 200-400 lbs.
8 Feeders 600-1000 lbs.

*Mr. Slusser says these are "easy calving" cows.
Mr. Slusser is retiring and if you like "quiet" cows and quality feeders, plan to attend this sale.*

We will also have our usual run of feeder steers, heifers, and bulls.

Sale Barn located 3 mi. east of Middleburg or 5 mi. west of Selingsgrove along Rt. 522.

For Information Call: 570-837-2222 or 570-837-2512
Clarence Shirk Lic. #AU002750

AUGUST
TUES, AUG 1 - Fat Cattle Sale, Carlisle Livestock Market, Inc., 548 Alexander Spring Road, Carlisle, PA
WED, AUG 2 - 9AM Lumber & Building Supplies To be held at Wolgemuth Auction, 109 N Maple Ave., Leola Lanc Co Pa 717-656-2947
FRI AUG 4 - 7 PM Feeder Cattle Sales Finger Lakes Livestock Exchange, Canandaigua, NY
SAT AUG 5 - 8 30AM - Horse 10AM Mel's Stables, 834 Wallace Rd., New Holland, PA Mel Hoover, Auctioneer
FRI, AUG 11 - 1PM State Graded Feeder Pig Sales Carlisle Livestock Market, Inc 548

DENNIS KOLB

LANCASTER, PA
**FRESH COWS/BRED HEIFERS
GRADE & REGISTERED
STOCK BULLS
GOOD HERD AVAILABLE!**



The Next Public Auction

Will Be At
Lancaster, PA



THURSDAY, JUNE 8, 2000

→ 7:30 P.M ←



Phone **717-569-6800 - Dennis Kolb**
717-569-2106

Sale Manager: **Dennis Kolb** Pedigrees: **Daniel Albright**
Auctioneer: **Paul Snyder (AU-000873-L)**

**Complete Dairy Herd & Farm Machinery Dispersal
SAT., MAY 27, 2000**

11:30 AM

Cherry Ridge, PA - Wayne County, PA
Located on the Owego Turnpike between Route 296 in Waymart, PA and Route 191 in Cherry Ridge, PA. 5 miles from Waymart; South 1 mile on Route 296, turn left, 4 miles to farm. 6 miles West of Honesdale, PA.

33 Head of Dairy Cattle: 28 milking age with several recently fresh; open heifer and 3 started calves. 24 B&W, 2 Red & White & 2 Jerseys, these animals have not been pushed, but are in a heavy flow of milk, the money making kind. DeLaval 2" SS pipeline w/200 ft. of pipe, 4 PV 300 units & compressors, sells complete as a unit. Mueller 730 gallon bulk tank w/2 yr. old compressor (A-1). Patz barn cleaner w/200 ft of chain, 15" paddles (counter clockwise) David Brown 1210 tractor - 540 & 1000 PRM's; New Holland 305 side slinger spreader; New Holland 461 haybine; New Holland Roll-A-Bar rake, Fahr Tedder; NH 273 baler w/thrower; 4 wooden basket wagons; Heavy duty gears; 1 running gear; (2) 36' mow elevators; 32 ft. hay & Grain elevator, 241 International round baler; 3 pt. round bale mover; round bale feeder; 20x60 Ribstone concrete stave silo; 16x50 concrete stave silo; (special Mention: like new Butler feed bin w/auger); Fidelity yellow jacket 35KV PTO alternator on trailer-A-1 plus quantity of small items.
Terms: Cash, certified check or approved check - Lunch.

FRED and MARY SWENDSEN

Owners
RD 2, Honesdale, PA
Phone: 570-488-6210

Wayne Weaver-Auctioneer 984-L
41 Headley Hill Road
Tunkhannock, PA 18657
Phone: 570-333-5242

**MILKING HERD DISPERSAL
AND
10-BIG BRED HEIFERS SELL**

On the farm located on Rt. 85 just south of Buckeystown in Frederick Co., Maryland. From I 70 or Rt. 15 follow Rt. 270 South to Rt. 85 (first exit on Rt. 270) turn right go 6 miles on Rt. 85 to farm on left. See black and white sale signs.

WEDNESDAY, MAY 17, 10:30 AM

110 MILKING HOLSTEINS - 10 BRED HEIFERS SELL

25 head are milking with 1st calf - 23 in second lactation • 21 milking with 3rd calf - up to 100 lbs. of milk per day.
30 cows fresh 90 days or less
21 cows are to freshen May thru July - 15 due Aug and Sept. • SCC on 3-21-00 - 270,000 - On honor roll for 2 years.
No BST ever used - No hairy worts.

BREEDING

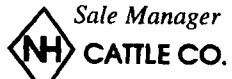
Coldsprings Farm sires and other registered sires have been used for generations. When viewing the herd you will see how well the genetics have developed in the herd. The cows exhibit tremendous size and scale with good feet.

Tested for Interstate Shipment - Examined for Pregnancy

Printed information on freshening, breeding and pregnancy will be available on sale day.
Lunch Available - Sale in Tent

ID required for bidders No.

Terms: Cash or good check day of auction. Nothing moved until settlement is made. If out-of-State need bank letter of credit. The owners or sale manager accept no responsibility for your attendance.

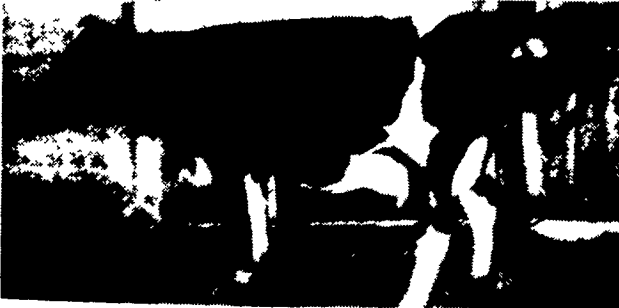


Sale Manager
CATTLE CO.

Norman Hill
15905 Union Chapel Rd., Woodbine, Maryland 21797
PH: 410-489-7121

Owners
ALTON D. ESWORTHY & SON
2553 Buckeystown Pike, Adamstown, Maryland 21710
PH:301-662-6173

Auctioneer: **Denny Remsburg, 301-473-7959**



Selling 2nd Calf - #222



These 2 yr. Olds Sell