

HUNTER KEYSTONE PETERBILT

1467 Manheim Pike • Lancaster, PA 17604
717 299-6630 • 800 243-2458



IN STOCK NOW
New

Peterbilt
Model 270
- Medium Duty,
Cab Over



Call Ed Muldoon or Brant Hamby
For Details
For All Your 26,000 to 33,000 GVW Needs



IN STOCK

Call Ed Muldoon or Brant Hamby
Peterbilt 330
10' Dumps, Cat & Cumm. Power, 9 Spd.,
33,000 GVW, Locking Rear, Air Ride, 10:23 Axles

35 TRUCKS AND TRAILERS

86 Volvo 25' Eby body, \$9000 neg., retiring. 717/933-8234.

'99 Dodge 3500 15 pass., 360 auto, PS, PB, PW, PDL, cruise, tilt, dual air, AM-FM cassette, privacy glass, 16,000 miles w/ balance of factory warranty, black, \$20,500. 717-733-2873

'97 Dodge 3500 12 pass., 318 auto, PS, PB, dual air, AM-FM cassette, dark blue, 74,000 miles, \$10,900. 717-733-2873

1988 Yankee, Steel Walking Floor Trailers. 45', 100 Yds. Need Work. 610-921-1971

For Sale 1987 Summit, Alum Walking Floor Trailer. 45' Long, 100 Yds. 610-921-1971

'99 Dodge 3500, 15 pass., 5.9 Magnum, auto, PS, PB, PW, PM, PDL, cruise, tilt, dual air, AM-FM cassette, privacy glass, dark green, 25,000 miles w/ balance of factory warranty, \$19,900. 717-733-2873

1987 Volvo White tractor, single axle or with tag axle, conventional, 320 Detroit, good cond. \$4800. 717-776-7725

MACK PARTS FOR SALE: Engines, blocks, heads & cranks, cabs, hoods & doors, trans, rears. ALL MACK PARTS. REASONABLE PRICES. MACK TRUCKS BOUGHT (complete or parts). 1-888-625-6485

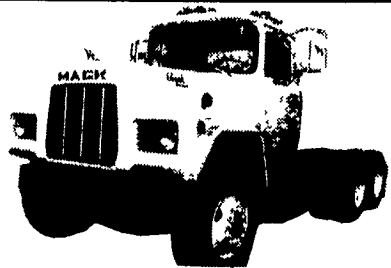
81 International 18ft dump, 466 diesel, real nice, 814/443-1236.

97 Chevy K3500 dsl 4x4 Silverado dually, auto, loaded, 5th wheel setup, 47,000 mi, \$25,000. 215/804-0538.

1987 Volvo White tractor, integral sleeper, PS, A/C, air ride susp, low miles, recent overhaul, V8 92 Detroit, \$5,995. 717-486-5337.

72 Mack F700 2250 gal. vacuum septic tanker, 6-speed, air brakes, hoses, \$6800 OBO. 717/244-7426.

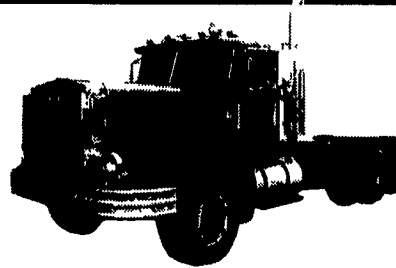
1984 White Volvo truck tractor, mechanically sound w/many new major parts, runs 1500+ miles per week. Inspected & serviced. \$7000 OBO. 717/656-9544, 800/309-9045.



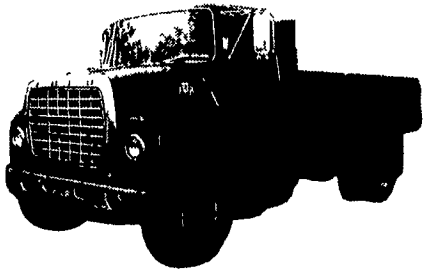
1989 MACK R688 ST, 300 HP, 9 Speed, 173" WB, New White Paint, Camel Back Susps., Very Clean, Local Trade (Stock #27314) **\$15,000.**



1986 PETERBILT 357, 3 Axle w/10' Cub Body & Side Automatic Block Unloader, L10 300 HP Cummins Eng, 8 LL Trans, 18# & 46# Axles (Stock #201211) **\$30,000.**



1983 AUTOCAR 64TB, w/3rd Axle, 6V92 Det Diesel w/Jake Brake, 11608 LL Trans, 156" C A (Stock #094783) **\$8,500.**



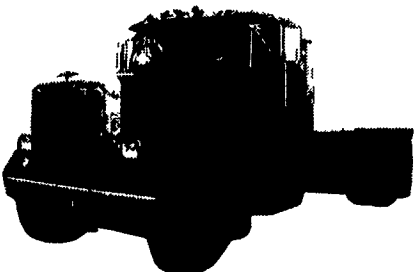
1983 FORD L8000, 35,000# GVW 14' Wood Platform, Dump Body, 3208 Cat Eng., 5/2 Speed Trans, Air Brakes, Very Clean Truck (Stock #A05764) **\$7,950.**



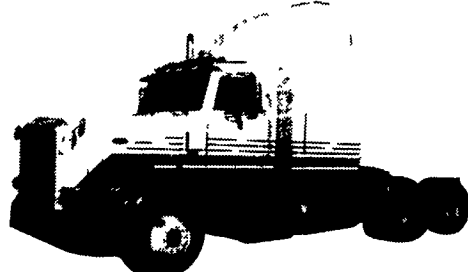
1996 IH 4700, w/16' Van Body & Lift Gate, 25,500 GVW (non-CDL), DT 466 Diesel, 5 Speed Trans., Straight Rear, Fresh In Frame Overhaul Just Done! 209,880 Miles. (Stock #264253) **\$21,500.**



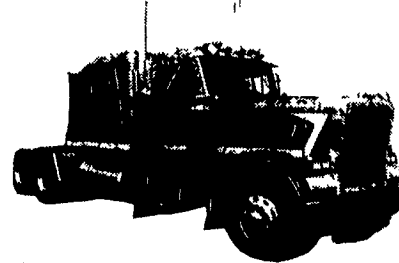
1994 Peterbilt 378, 36" Sleeper, Series 60 Detroit Diesel Eng w/Jake Brake, Fuller 10 Speed Trans, Airleaf Susp, 219" Wheelbase, Clean Local Trade (Stock #358096) **Sale Price \$24,500.**



1987 PETERBILT 357, Long WB Chassis, 156" C.A. w/Lift Axle, L10 300 HP, Cummins w/Jake Brake, 8 LL Trans, 18# & 40# Axles (Stock #214025) **\$19,000.**



(2) 1994 Peterbilt 378, 3406 Cat Power, Clean Local Trucks. (Stock #353343 & #353344) **Special \$22,000.**



1992 PETERBILT 379, Long Hood, 63" Low Roof Sleeper, Series 60 Det., 450 HP, w/Jake Brake, 9 Speed, 3 Tone Green Paint, Alu., Wheels, Air Ride, Recent Engine Over Haul (Stock #323145) **\$28,500.**

NO NEED TO HUNT ANYMORE-- COME TO HUNTER'S

AL HAMILTON USED TRUCK SALES

P.O. Box 157 • 55 Doe Run Road • Manheim, PA 17545
Phone: 717-665-7145 • Fax 717-665-2137

★★ "CLEANEST TRUCKS AROUND" ★★

SUMMER SALE
All Prices Reduced



1979 Ford LN 700
10' Dump, 370 Gas, 5 Sp. Trans,
2 Sp. Rear, Hyd. Brakes
\$5,500



1985 Ford F-700
370 Gas, 5 Spd. Trans, 2 Spd
Rear, Hyd Brakes
21' Eby Cattle Body **\$10,500**



1980 Ford LT 9000
Heavy Spec Truck, 238 Detroit,
13 Spd. Trans, Heavy Spec.
18' Flat Dump **\$16,500**



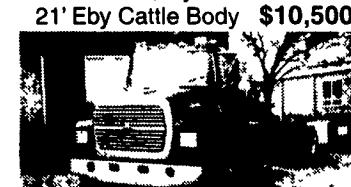
1989 G.M.C. 6000 C&C
350 Gas, 4 Spd. Trans, Hyd
Brakes, Low Miles, 150" W.B.,
84" C.A. **\$4,500**



1986 Ford LN 8000
16' Flat Dump, 3208 Cat, 210 HP, 5
Spd. Trans, 2 Spd. Rear, Custom
Int., 33,000 GVW **\$19,500**



1994 Ford F-700 C&C
429 Gas, 5 Spd. Trans, Air Brakes,
14,00 Miles Actual, 207" W.B.,
140" C.A, Like New **\$19,500**



1989 Ford LN 8000 C&C
7.8 Diesel, 240 Hp, 6 Spd. Trans,
Custom Int., 234" W.B. 165" C.A.
\$16,500



1986 Ford LN 8000 C&C
3208T, 250 HP, 5 Spd. Trans, 2
Spd. Rear, Custom Int.,
222" W.B, 156" C A **\$15,500**



1995 FORD LN 8000
8.3 Cummins, 210 HP, 6 Spd.
Trans, P.S., A/C, New 11' Dump
Body, 35,000 G.V.W. **\$28,500**



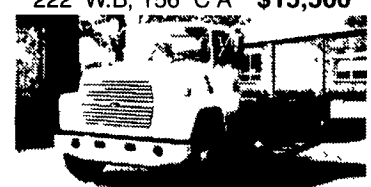
1995 G.M.C. 6000 C&C
DT-466, 190 HP, 6+1 Trans, Hyd.
Brakes, Custom Cab, A/C, Low
Miles 236 W.B, 124 C.A 25,000
G.V.W. **\$23,500**



1992 Ford LN 8000 C&C
7.8 Ford Diesel, 210 HP, 6 Spd.
Trans, Custom Int., 234 W.B.,
168 C.A. 33,000 G.V.W. **\$18,500**



1994 Int. 4700 C&C
Low Profile, DT-408, 190 HP, 6+1
Trans., Hyd. Brakes, A/C, 175
W.B., 108 C.A., 25,000 G V.W.
\$20,500



1995 Ford LN 8000 C&C
8 3 Cummins, 210 HP, Custom Int.,
A/C, 260 W B., 192 C A
35,000 G V W. **\$23,500**