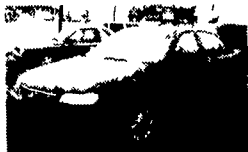


**WILLIAM H. WESSELS  
USED CARS**



98 Chevy Malibu, 4 Cyl., Auto, AC, 1 Owner, 51,210 Miles  
**\$9,900**



97 GMC K1500 Ext. Cab, 350 V8, Auto, AC, Short Bed, 47,810 Miles  
**\$20,900**



61 Bentley Right Hand Drive, 34,207 Miles, Nice Older Car  
**\$16,900**



87 Chevy Astro Van, V6, 5 Passenger, Auto, AC, Local Trade  
**\$2,490**



97 Plymouth Grand Voyager, V-6, Auto, AC, 79,207 Miles  
**\$8,990**



93 Dodge Ext. Cargo Van, 3.3 V6, Auto, AC, 64,207 Miles  
**\$6,990**



90 Ford E250 Econo Van V8, Auto, AC, Local Trade  
**\$3,990**



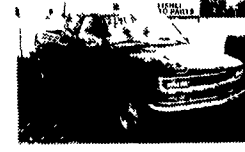
95 Dodge Ram 2500 Ext. Cargo Van, 3.9 V6, Auto, AC, 121,300 Miles  
**\$6,990**



95 Chevy Corvette Convertible, 45,210 Miles  
**\$25,900**



97 Toyota Camry LE, Auto, AC, 22,000 Miles  
**\$14,900**



98 Chevy K1500 Ex Cab 4x4, Step-side, 350 V-8, Auto, AC, 3rd Door, 40,000 Miles  
**\$21,900**



91 Isuzu 20' Box Truck, 6 Cyl. Diesel, 32,000 GVW, Power Lift Gate, 221,116 Miles  
**\$10,900**



97 GMC Yukon SLT, One Owner, 52,107 Miles, Nice!  
**\$22,900**



84 Chevy K10 4x4, Diesel, PW&L, 102,000 Miles, Very Nice  
Local Trade  
**\$4,990**



93 Cadillac Fleetwood Brougham, V-8, Auto, AC, Leather, 87,314 Miles  
**\$8,990**



95 Chevy 14' Walk In Van, Diesel, Auto, No AC, 14,100 GVW, 102,287 Miles  
**\$11,900**



96 Isuzu Cab & Chassis, 350 V-8, Gas, Auto, AC, 68,210 Miles  
**\$13,900**



88 GMC Walk In Van, 366 V-8, Gas, Auto, Shelves & Bins, 22,000 GVW  
**\$6,990**



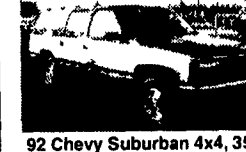
91 Chevy K2500 4x4, Heavy Duty, Good Work Truck, 107,206 Miles  
**\$9,900**



94 Chevy K1500 Ex. Cab, Z71 Pkg, 350 V8, Auto, AC, 79,910 Miles  
**\$14,900**



94 Chevy S10 Ext. Cab 4x4, V-6, Auto, AC, Local Trade, 78,102 Miles  
**\$10,900**



92 Chevy Suburban 4x4, 350 V8, Auto, AC, Equipped, 134,000 Miles  
**\$9,900**



86 Ford F250 Ext. Cab 4x4, 6.9 Diesel, Auto, Local Trade  
**\$5,990**



98 Chevy Venture Ext, 4 Drs, V-6, Auto, AC, 83,210 Miles  
**\$13,900**



96 GMC Yukon 4x4, V-8, Auto, AC, 73,280 Miles  
**\$16,900**



96 Toyota Forerunner 4x4, One Owner, 69,220 Miles  
**\$16,900**



96 GMC K1500 Long Bed, Ex. Cab, 4x4, 96,107 Miles  
**\$14,990**



97 Chevy Suburban LS 4x4, Auto, AC, 31,207 Miles  
**\$25,900**



97 Ford F150 Ex. Cab, 3rd Dr., Long Bed, 5.4 V-8, Only 7,000 Miles  
**\$21,900**



99 Dodge Ram Ex. Cab, 4x4, 360 V-8, Auto, AC, SLT Pkg, 23,106 Miles  
**\$21,900**



93 GMC 14' Box Truck, Diesel, 5 Speed, 123,220 Miles  
**\$8,990**



97 GMC K1500 SLE 4x4, 350 V-8, Very Nice, 55,207 Miles  
**\$16,900**



97 Chev Suburban LT 4x4, 61,210 Miles  
**\$23,900**

**WILLIAM H. WESSELS  
USED CARS**

811 Route 15 Dillsburg, PA  
1-800-440-4433 1-717-432-2918  
Notary Public - Temporary Tags

**MOTORS**

New & Rebuilt

350, 366, 427, 454

6.2 Diesels

Rebuilt & Used

Will Install

717-762-6415

Mountain Ground w/ Stream.. 5+ Acres of exceptional wooded & open land. Good hunting area. Great for family fun, too! Swimming, boating & fishing nearby. Steuben Co., NY. Minutes to Tioga Co., PA. Full price \$6900. Owner will finance. \$700 down, \$76.43/mo. 12.5% int. 180 months. Evergreen F.P., 570-784-4021

36

**REAL ESTATE**

**HISTORIC ESTATE**, Bowmansville PA. Lancaster Co. House, 2 barns, summer kitchen on 1.2 acres. Zoned neighborhood commercial, ideal for studio, sm business, or contractor's office. Call Bill Boben- High Associates LTD. 717-293-4477

313 Ac Steuben Co, NY on PA border. Scenic area w/lots of wildlife. Currently veal & beef farm but could return to dairy or use as recreational. 128 acs tillable, 60 pasture, balance woodland, 4 streams. Good bldgs. 607-356-3200

High traffic site at the intersection of RT 343 & RT 22. Water, sewer, & gas, 47,000 sq.ft. Access from both highways. Inquire. Freeport Mills Real Estate 717-865-3005

Investment property in Lebanon, PA. (3) 2 story townhouses, 9 years old, currently rented. \$145,000. Freeport Mills Real Estate 717-865-3005

Juniata Co. PA 4br, 2 1/2 bath country home on 3.5 ac. Beautiful view of the mountains, wrap-a-round porch, lg pole barn that could be converted for horse use. Must sell! Call for details. 717-436-9754

Lancaster Co. PA: house, apartment & garage, Salunga/Landisville area. 100+ year old 2 story, 4br, 2 baths, oversized 2 car attach gar, in-home beauty shop w/powder room, lg 3 bay garage, suitable for business (previously excavating business) w/2br apartment above. Hempfield Schools. \$268,000. 717-898-7195

50 acres Union Co, road frontage, 1/2 tillable, stream through rear of property w/woodland. Barn, milk house, implement shed and well. Call 570-966-3460;

**WANT TO RENT OR BUY** Small farm, 10 acres M/L. With or without bldgs for produce, dairy etc. PA or NY, possibly other areas. 717-765-8696. PO Box 61 Waynesboro, Pa, 17268

Partners & Land Needed. Do you have ground for development? Why sell it undeveloped? We'll pay for all developing costs, you provide the ground, and we'll sell it as a subdivision. Get up to twice the normal value with no cash out of your pocket. Call for details. Ryan C. Hess. Berks Const. 717-581-4911

For sale by owner 10 acres, 2360 sq.ft. house w/hardwood floors, stone fireplace. 40x40 pole shed, 30x50 barn, 3042 sq.ft garage/shop. Woods, fruit trees, garden, pasture. Tioga Co., PA. \$107,900. 573/996-9078.

Wanted: Dairy barn for 50 cows or farm to rent, spring of 2001 in Lanc. Co. 610/857-9237.

Newville Area, Cumberland Co, 2 1/2 story brick & limestone house, circa 1740, garage, barn & out-buildings on 15 acres, \$450,000. More acreage available. 717-258-1921.

Clearfield Co. hunting camp. Buy 1 share or make offer for all 7 acres. 610/857-0197.

For Sale by Owner, central WI, 234A, 183 under plow, new 6BR house. 715-223-3192.

E. Hanover Twp. Lebanon Co, PA. 112 Ac farm, barn, lake, \$450,000. 717-838-5932

**HORSE FARM:** 80 ac w/ stream, Lanc Co, fenced, Little Brittain/Colerain Twp. Isolated, majestic view. Call ARA Real Estate 610-857-2141 or Gary Stapleton 717-529-2544.

Christmas Tree Farm & Land, Bloomsburg Area, 72 Ac. 40,000 Christmas Trees, Doug Fir 5'-Up. Great Hunting, Fishing Locally, Spectacular Views. \$150,000. 610-269-1893. Discount Available for Quick Settlement

Lykens Valley farm for sale, 110 A, 101 tillable, Northern Dauphin Co, 717-647-9492.

Looking to lease/buy, modern pig finishing building, 1500 head & up. Central/Eastern PA. 717-933-9397

Southern Chester Co., PA. 40 +/- acre farm, house, barn. All tillable. Call owner for info \$525,000. 610-932-4952

**FARMS FOR SALE**  
Dairy Farms for sale. Some bare, some stocked & equipped. Call Ken, Jeff, Ted, Gerald or Brian for free catalog.  
**CHRISTENSEN SALES CORP**  
Abbotsford, WI (715) 223-6345

**CUMBERLAND COUNTY FARMLAND**  
**\*\*106 ACRES\*\*** Approximately 75 acres tillable, 15 wooded acres, balance fronts a wet-weather stream. Gorgeous building site at foot of North Mountain. **\$215,000.**  
**SPENCER & SPENCER REALTORS**  
717/258-4666  
www.spencerandspencer.com

**93.5 Acres operating dairy farm**  
85 tillable, road frontage, 62 tie stalls, TMR w/elevators, 2 upright silos w/unloaders, corn crib, 2-story house, 3-car garage.  
**\$265,000**  
**814/374-4057**

**CENTRAL VIRGINIA:** Farms and land available from 5 to 500 acres, reasonable prices, very low taxes, farmer friendly communities agricultural economy; free catalog.  
**State Wide Realty Co.**  
Farmville, Virginia  
**804-392-6163**  
Farms & Rural Properties  
Low Prices, Low Taxes, Free Catalog

**POULTRY FARM**  
Located near Centerville, MD with capacity of 201,000. Six houses each having 12 Tunnel Fans and Fogger Cooling. 200KW Generator (1 yr. old), John Deere Tractor (2 yrs. old), John Deere 10 ft. Mower (2 yrs. old), 10 ft. Box Blade (1 yr old), and John Deere Gator w/Cab (2 yrs. old), all go with farm. Everything is modern and in excellent operating condition Profitable with little or no money down. Significant tax benefits.  
Call Jay at 410/556-1267 or  
Pager 410/810-9396 for more information

**JUNIATA COUNTY 28 ACRE FARMETTE**  
8 acres tillable, 20 acres wooded. Low taxes. Beautiful secluded area. 3-bdrm home, horse barn/ garage. Well and septic. Located 1/2 Mi. off Rt. 104 behind Oak Springs Wood Products on Klinger Hollow Road. 1 1/2 Mi. North of 104 and 11-15 Junction  
**Owners Levi & Angela Stauffer**  
**RR1 Box 230**  
**Liverpool, PA 17045**

**LANDMARK DINER & DAIRY BAR:**  
Established in 1942 has had everything up-dated in 1999 and does a landmark business. Special setting in prosperous farming community. Dining room has 13 booths and 5 tables, counter seats 13. Modern kitchen with walk-in freezer and cooler. Site for double wide with utilities behind diner. **JUST LISTED! \$155,000**

**Mort Wimple Associates**  
Real Estate Sales - Management  
**FREE CATALOGUES** U.S. ROUTE 20  
SLOANSVILLE N.Y. 12160  
Internet Page (518) 875-6355  
www.farmsunlimited.com FAX: (518) 875-6749

**Mt. Cabin For Rent**  
McClure, PA  
Mifflin County On 315 Acres, Utilities.  
One Hr. To Penn State. Hiking, Swimming, Biking, Hunting, Fishing, Skiing.  
OPEN ALL YEAR-WEEKLY & WEEKEND RATES 570-658-9555

Thinking of marketing your farm?  
You need to call on the experience of Harry Zimmerman for professional confidential service.  
Specializing in tax deferred exchanges.  
**TOWN & COUNTRY REALTY**  
717-298-4885 OFFICE  
717-355-2048 HOME

**CERTIFIED ORGANIC FARM**  
88 Acres (80 tillable) \$220,000  
Priced to sell at \$2,500/acre  
White Deer Twp., Union Co., PA  
570-966-1658

**FARMETTE** 4 bedroom, 1 1/2 bath, new oil heat system, central air, with 29 1/4 acres some wooded, Lancaster County, W. Hempfield Twp., bank barn w/4 lower level horse stalls, tobacco cellar, 2 sep. garages, well/septic & more **\$325,000.00**  
**CALL Steve Arbutina**  
@ 717-684-4997 or 717-951-3605

**JUNIATA CO. PA - 60 MI W. OF HBG.**  
**FARMETTE AC & COUNTRY BLDG. LOTS**

- 4 ACS - Wooded, twp road frontage \$24,900
- 4-1/2 ACS - Wooded, secluded, no restrictions \$29,500
- 6 ACS - part wooded, great view \$39,500
- 6-1/2 ACS - part wooded, mobiles OK \$29,500
- 18 ACS - part wooded, view, lots of frontage \$49,500
- 56 ACS - part wooded, camp/fish/hunt along the creek, secluded. .... \$125,000

Homes, farms, farmettes & commercial properties available.  
Call now for details!  
Broker has financial interest in some of above.  
**Larry Long Real Estate**  
**717-527-4784**