

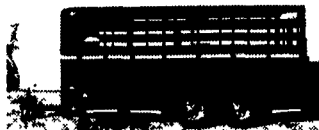


HOSTETLER

Truck Bodies & Trailers

717-667-3921

Milroy Exit off Rt. 322
Between Lewistown & State College



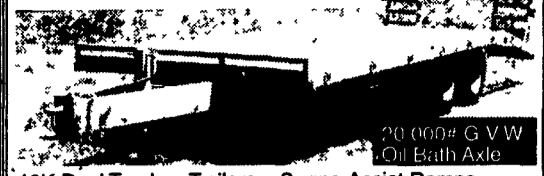
New Design Moritz Livestock Trailers
Semi Round Front, New Sides and Rear
6 x16 7000# GVW **\$3,575**
6'8" x 16' Long 7000# GVW **\$3,775**



Moritz Slant Load Bumper Pull Livestock Trailers, Dressing Room, 7' High, Starting at
2 Horse **\$3,650**
3 Horse **\$3,950**

Appalachian Manufacturing, Inc.

930-222-2468



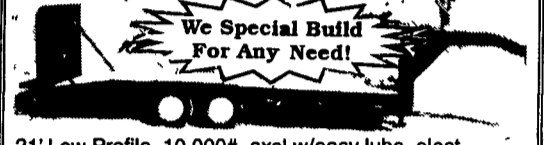
20,000# G.V.W. Oil Bath Axle
10K Dual Tandem Trailers - Spring Assist Ramps
Pintle Pull, 18x5, Dovetail **\$4,750**
Gooseneck, 20x5 **\$5,000**



24' Gooseneck, 4' dovetail, 1-12,000# G.V.W., 6,000# axels w/easy lube, electric brakes, 7.50-16 tires, breakaway kit, ramps w/pressure treated deck, standard 12,000 GVW **\$2,995**
..... 14,000 GVW **\$3,195**



16' Car Hauler, diamond plate deck with W/D rings, self storing ramps, 7,000# G.V.W., elect. brakes, both axels 82" between wheel wells, breakaway kit incl
16' Car Trailer **\$1,495** 18' Car Trailer **\$1,645**



21' Low Profile, 10,000#, axel w/easy lube, elect. brakes, pressure treated deck, 10,000# G.V.W., gooseneck **\$3,100**
Bumper pull **\$2,950**



1982 FRUEHAUF DROP DECK
45', Air Ride, Beaver Tail, Ramps, Road Ready
Asking **\$8,500 • (717) 664-5014**

FEATURE TRAILER

MORITZ HYDRAULIC TILT DECK TRAILER



19' LONG, 82" WIDE BETWEEN THE FENDERS, ELECTRIC HYDRAULIC PUMP, TREATED PINE FLOOR, ADJ. COUPLER.

10,000 #GVW \$3,895
12,000# GVW \$4,195

Now Available in 21'
New 5000# Winch Available

Financing & Leasing Available



Steel Dump Bodies, 12" Sides, 20" Tailgate, Cab Protector, In Prime, Cash & Carry, 8-1/2' 11' Long
\$1,695
\$1,895
Call About Installed Prices With Hoist



Eby Aluminum Bumper Pull Livestock Trailer Rubber Torsion Axles 1/2 Slider on Rear Divider Gate, Escape Door, Spare Wheel & Tire, 6'8" Wide x16' Long **\$8,395**



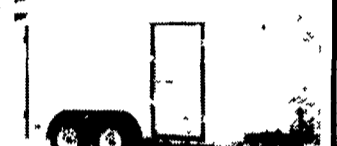
Moritz Skid Loader Trailers 82" Wide Between Fenders Rubber Torsion Axles Treated Pine Floor, 10,000# Drop Leg Jack Spare Wheel & Tire Adj Coupler, 10,000 GVW Available in 7 Colors
16' Long **\$2,875**
18' Long **\$3,030**



Corn Pro Bumper Pull Livestock Trailer, Corn Pro, Rubber Torsion Axles, Treated Pine Floor
6 x16' 3500# Axles **\$3,495**
6'8" Wide x 16' Long 3500#Axles **\$3,725**
6'8" Wide x 16' Long 6000#Axles **\$4,045**



Single and Dual Wheel Pick Up Flatbeds, Bulkhead, Coutside Pockets, Rear Skirt, With or Without Gooseneck Compartments
Starting at **\$825**



Pace American Enclosed Trailers, Single & Tandem Axle, Side Doors, Double Rear Doors & Ramp Doors
6'x12' 3000# GVW. **\$2,550**
8'x16' 7000# GVW **\$4,250**



Tool Boxes, 36 x18'x18' **\$162**
24 x18 x18' **\$146** 42'x18 x18' **\$169**
30 x18 x18 **\$155** 48'x18'x18' **\$178**



Grain Bodies, Removable Sides, Various Rears Available, With or Without Hoist 16" w/40" Sides Not Installed
\$2,650



Eby 20' Aluminum Gooseneck Livestock Trailer, 7000# Torsion Axles, Spare Wheel & Tire, Ready To Haul
\$10,695

BRENNER

PHONE: 717-232-4271

www.brennerdodge.com Fax: 717-233-8221

RON JACKMAN

Business Link Account Manager

The New Commercial Sales Group

Harrisburg's Only BusinessLink Dealer

"Saving the Small Business Owner Time, Money & Hassles"

RAY MARINO

Business Link Account Manager



2000 DODGE 3500 QUAD CAB DUALY 4x4
Cummins Turbo Diesel, AT, A/C, SLT,



2000 DODGE RAM 3500 MAXI VAN
15 Passenger People Mover, Center Aisle, Dual Air, Raised Roof, AT, Cruise, Tilt and More



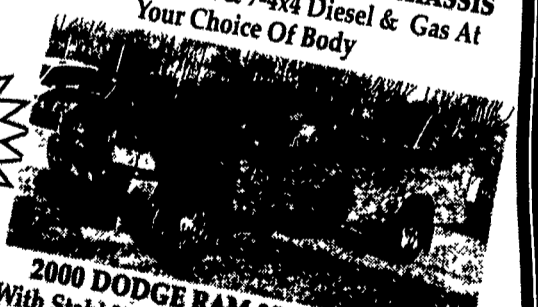
2000 DODGE RAM 3500 CAB & CHASSIS
8 Left. 1-4x2 Diesel & 7-4x4 Diesel & Gas At Your Choice Of Body



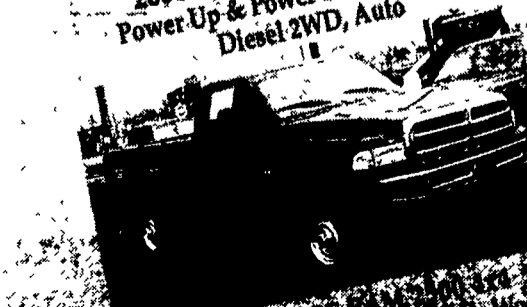
2000 DODGE 3500 19' DUMP
Power Up & Power Down Cummins Diesel 2WD, Auto



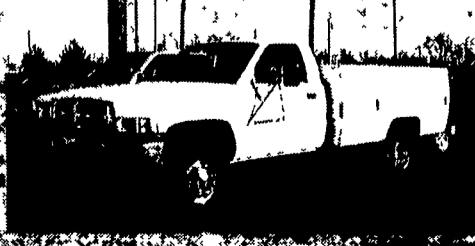
2000 DODGE RAM 3500 MAXI MOBILITY VAN
High Top with Flip Up Seats, 8 Passenger or 4 Wheel Chair Passenger Positions



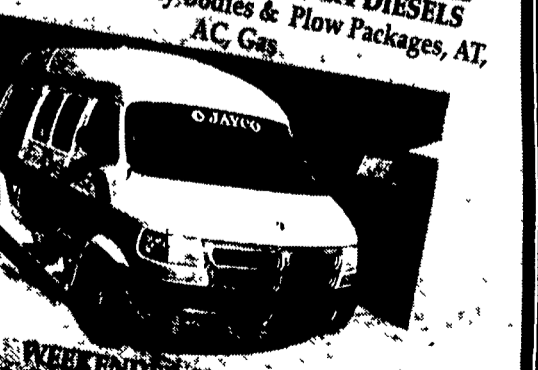
2000 DODGE RAM 3500 4x4 DIESELS
With Stahl Utility, Bodies & Plow Packages, AT, A/C, Gas.



2000 DODGE RAM 3500 SNOW PLOW PREP
AT, A/C, Snow Plow Prep, 12" Work Truck



2000 DODGE 3500



2000 DODGE RAM 3500 JAYCO WEEKENDER SPECIAL