

HOLLINGER MACK, INC.



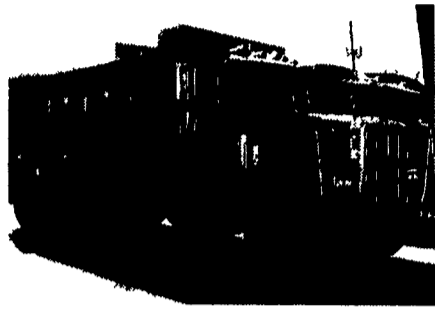
126 KELLER AVENUE • P.O. BOX 4455
LANCASTER, PA. 17604

PHONE 717-393-3633
FAX - 717-393-2042



1987 MACK R686ST TRACTOR

169" w.b.,
300 Horse Maxidyne,
5 Spd., Camelback.
Good Clean Workhorse.



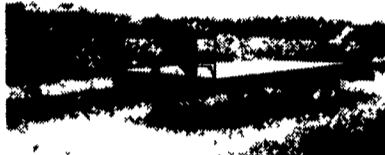
1991 PETERBILT 357 TRI/AXLE DUMP

300 Horse Cat,
8LL Trans., 20 & 44 Axles
on Spring Susp.,
17'6" Steel Dump.
Clean Truck.

• Kaufman Trailers •



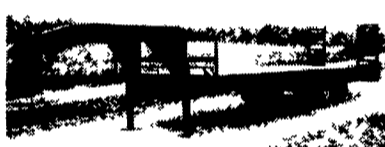
20' Lowboy Gooseneck,
14,000 GVW \$3,300



24' Tandem Deckover Gooseneck,
Flip-Up Ramps
14,000 lb GVW \$3,750

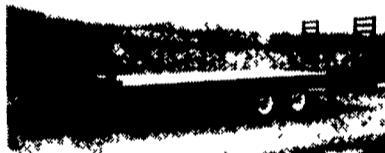


18' Farmers Contractor Special,
Flip-Up Ramps, 12,000 lb Drop
Foot Jack, 83" Between Fenders,
10,000 lb. GVW \$2,750
12,000 lb. GVW \$2,850



28' Tandem Dual Gooseneck,
Flip-Up Ramps
20,000 lb. GVW \$6,300

1999 Hudson Landscape Trailer, Tandem
Axle \$2,100



20' Tag Along Deck Over,
Flip-Up Ramps
10,000 lb. GVW \$3,400
14,000 lb. GVW \$3,600

Weaver's Truck and Equipment Sale

Milton, PA
570/523/9598



Silage Truck, 87 Mack, 5 Spd.,
Air Brakes, field Ready,
Clutch 1 Year Ago

717-786-0109 Lanc. Co.

TIRE SALE

- Used Truck Tires.....As Low As \$50
- Good Selection in Most Sizes.
- New Trailer Retreads Size
11R22.5 or 11R24.5 \$125
- Eliminate the Middleman! Buy Direct
from our Retread Shop and Save \$\$!
- Good Supply of Retreads in Stock or we
can Custom Retread your Tires to meet
your Hauling Needs.
- Our Family Business Has Been
Retreading Tires for 35 Years.

We Know How To Do It Right!



WEAVER'S TIRE SERVICE

Ephrata, PA
717/733-8775

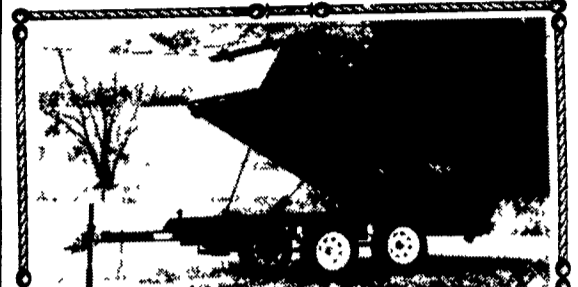


95 FORD F700 18 Ft. FLATBED

Cummins Diesel, 6 Spd., A/C,
26,000 GVW, 170,000 Miles, Black,
Very Nice Condition

\$16,995 O.B.O.

Call 717-336-3130



NEW DUMP TRAILERS

6x10 7,000 GVW, Powder Coated Black,
4 ft. remote, brakes both axles,
new battery \$3,100

Also 6x12, 9,900 GVW, \$3,800

Westminster, MD
(410) 984-3965



2000 CHEV 3500 CAB & CHASSIS
AT, A/C, 15,000 GVW STOCK #33707

- also -

2000 CHEV 2500 CAB & CHASSIS
AT, A/C, 8,600 GVW STOCK #33703



1999 CHEV SUBURBAN LT
VERY WELL EQUIPPED, 350 V8,
BARN DOORS, HITCH, 29,000 MILES

Outten Hamburg Rt. 61, Hamburg PA
1-800-451-2333 • 610-562-2216

AL HAMILTON USED TRUCK SALES

P.O. Box 157 • 55 Doe Run Road • Manheim, PA 17545
Phone: 717-665-7145 • Fax 717-665-2137

★★ "CLEANEST TRUCKS AROUND" ★★

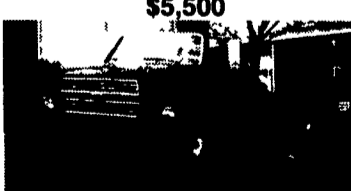
SUMMER SALE All Prices Reduced



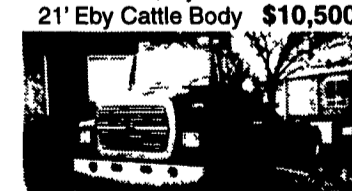
1989 G.M.C. 6000 C&C
350 Gas, 4 Spd. Trans, Hyd
Brakes, Low Miles, 150" W.B.,
84" C.A. \$4,500



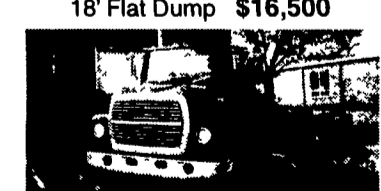
1986 Ford LN 8000
16' Flat Dump, 3208 Cat, 210 HP, 4
Spd. Trans, 2 Spd. Rear, Custom
Int., 33,000 GVW \$19,500



1994 Ford F-700 C&C
429 Gas, 5 Spd. Trans, Air Brakes,
14,00 Miles Actual, 207" W.B.,
140" C.A. Like New \$19,500



1989 Ford LN 8000 C&C
7.8 Diesel, 240 Hp, 6 Spd. Trans,
Custom Int., 234" W.B. 165" C.A.
\$16,500



1986 Ford LN 8000 C&C
3208T, 250 HP, 5 Spd. Trans, 2
Spd. Rear, Custom Int.,
222" W.B. 156" C.A. \$15,500



1995 FORD LN 8000
8.3 Cummins, 210 HP, 6 Spd.
Trans, P.S., A/C, New 11' Dump
Body, 35,000 G.V.W. \$28,500



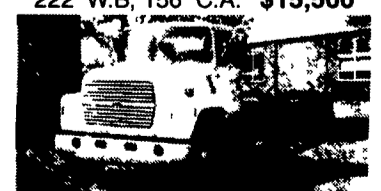
1995 Int. 4700 C&C
DT-466, 190 HP, 6+1 Trans, Hyd.
Brakes, Custom Cab, A/C, Low
Miles 236 W.B. 124 C.A. 25,000
G.V.W. \$23,500



1992 Ford LN 8000 C&C
7.8 Ford Diesel, 210 HP, 6 Spd.
Trans, Custom Int., 234 W.B.,
168 C.A. 33,000 G.V.W. \$18,500



1994 Int. 4700 C&C
Low Profile, DT-408, 190 HP, 6+1
Trans., Hyd. Brakes, A/C, 175
W.B., 108 C.A., 25,000 G.V.W.
\$20,500



1995 Ford LN 8000 C&C
8.3 Cummins, 210 HP, Custom Int.,
A/C, 260 W.B., 192 C.A.
35,000 G.V.W. \$23,500