

14 Livestock Auctions

28 April 2000

Report Supplied By PDA

CATTLE 5042 Compared with 4817 head last week and 4604 head a year ago Slaughter steers steady to mostly 1 00 higher, sl heifers 1 00 to 2 00 higher, sl cows mostly steady with some weakness late in the week, bulls 1 00 to 3 00 higher.

SLAUGHTER STEERS. High Choice and Prime 2-4 74 00-77.25, Choice 1-3 68 00-74 50, Select and Low Choice 2-3 67 00-71 75, Select 1-3 63 00-68 75, Standard 1-2 52 00-61 50

HOLSTEINS High Choice and Prime 2-3 64 00-68 25, Choice 2-3 60 75-65 50, Select 1-2 55 00-61 00, Standard 1-2 50 25-54 00

HEIFERS Choice few Prime 2-4 68 00-73 50, few to 75 25, Select 1-3 62 00-68 50, Standard 1-2 50 00-59 00

COWS Breakers 75-80% lean 40 00-44 75 early week sales to 47 00, Boners 80-85% lean 38 00-44 50, Lean 85-90% lean 33 00-42 75 mostly 35 00-40 50 Shells down to 28 50

BULLOCKS Choice 2-3 68 00-77 00, Select 1-3 51 50-56 00

BULLS Yield Grade 1 1000-2500 lbs 50 00-57 50, Yield Grade 2 900-2400 lbs 44 00-51 00

FEEDER CATTLE STEERS

Medium and Large 1 300-500 lbs 93 00-114 00, 500-700 lbs 72 00-81 00, Medium and Large 2 300-500 lbs 73 00-90 00, 500-700 lbs 64 00-72 00; **HEIFERS** Medium and Large 1 300-500 lbs 89 00-115 00, 500-700 lbs 70 00-90 00, Medium and Large 2 300-500 lbs 73 00-94 00, 500-700 lbs 64 00-79 00, **BULLS** Medium and Large 1 300-500 lbs 86 00-108 00, 500-700 lbs 65 00-86 00, Medium and Large 2 300-500 lbs 69 00-82 00.

CALVES 2332 ..Compared with 2184 head last week and 2702 head a year ago Vealers small supply steady to 10 00 higher.. **VEALERS** Choice 150-325 lbs 95 00-105 00, Good 125-250 lbs 73 00-85 00, Standard and Good 75-120 lbs 35 00-65 00, Utility 50-100 lbs 12 00-35 00 **FARM CALVES** Holstein bull calves 20 00 to 50 00 higher with often little or no discount for No 2 quality calves, Holstein heifers steady to 10 00 lower No 1 Holstein bulls 80-120 lbs 155 00-262 00, No 2 80-120 lbs 100 00-170 00, weaker calves 70 00-95 00, No 1 Holstein heifers 80-120 lbs 290 00-370 00, No 2 80-120 lbs 120 00-265 00 Beef type bulls and heifers 75-140 lbs 90 00-190 00

HOGS 1517 Compared with 1946 head last week and 1536 head a year ago Barrows and gilts mostly steady, sows unevenly steady **BARROWS AND GILTS** 49-54% lean 220-265 lbs 47 00-

49.85, 40-45% lean 220-275 lbs 44.25-47 00, 45-50% lean 240-300 lbs 41 00-44.85 **SOWS** US 1-3 300-500 lbs 30 00-38 00, 500-700 lbs 37 00-46 00 **BOARS** 14 00-16 50.

FEEDER PIGS 220. Compared with 318 head last week and 323 head a year ago US 1-3 30-55 lbs 37 00-45 00 --- per head

SHEEP 2798 Compared with 5596 head last week and 2162 head a year ago Slaughter lambs 10 00 to 40 00 higher in last week of Greek Easter trading **SLAUGHTER LAMBS** Choice 30-50 lbs 150 00-180 00, few 235 00, 50-80 lbs 90 00-140 00, 80-110 lbs 89 00-110 00, Good and Choice 30-75 lbs 70 00-95 00 **SLAUGHTER SHEEP** 23 00-50 00

ONE GRADED FEEDER PIG SALE 288 Compared with 1348 last week and 1004 head a year ago.. Feeder pigs small supply mostly 25 00 higher US 1-2 20-30 lbs 150 00-155 00, 30-45 lbs 137 00-145 00, US 2-3 30-40 lbs 65 00, Slaughter 20-40 lbs 135 00-170 00, 40-55 lbs 110 00-135 00 --- per cwt



Eighty-four Livestock

Eighty-four, Pa.

1 May 2000

Report Supplied By PDA

CATTLE 290 [PDA] Compared with last week's sale sl cows and bulls steady **SLAUGHTER STEERS** one Choice

2-3 1285 lbs 66 00, few Select 1-3 59 00-64 00 **HOLSTEINS** few Standard 1-2 50 00-54 00 **HEIFERS** one Select 1-3 58 50, few Standard 1-2 49 00-55 50, few 45 00 **COWS** Breakers 75-80% lean 42 00-46 00, one 53 00, Boners 80-85% lean 36 75-42 50, Lean 85-90% lean 32 00-37 00 Shells 32 00 and down

BULLS Yield Grade 1 1315-2035 lbs 50 25-54 00, one 60 50, Yield Grade 2 1005-1250 lbs 45 00-48 00

FEEDER CATTLE STEERS few Medium and Large 1 425-500 lbs 93 00-108 00, 515-775 lbs 80 00-96 00, few Medium and Large 2 370-725 lbs 64 00-90 00, **HEIFERS** Medium and Large 1 345-645 lbs 66 00-87 00, 510-845 lbs 66 00-81 00, few to 58 00, **BULLS** Medium and Large 1 330-395 lbs 90 00-102 00, Medium and Large 2 305-500 lbs 64 00-89 00, 550-945 lbs 55 00-75 00 **CALVES** 122 [All calves sold per

cwt] **VEALERS** one Choice 230 lbs 110 00, Standard and Good 60-85 lbs 40 00-60 00, 90-105 lbs 50 00-72 50, Utility 50-70 lbs 20 00-40 00

FARM CALVES Holstein bulls steady to 20 00 higher No 1 Holstein bulls 90-125 lbs 130 00-190 00, No 2 70-110 lbs 75 00-140 00, No 1 Holstein heifers 75-105 lbs 245 00-310 00, No 2 75-115 lbs 115 00-200 00

Beef type bulls and heifers 60-130 lbs 75 00-182 50, 155-295 lbs 73 00-111 00

HOGS 20 **BARROWS AND GILTS** 40-45% lean 235-310 lbs 45 50-48 00

SOWS US 1-3 365-490 lbs 37 00-40 50, 530-615 lbs 32 50-43 50

BOARS one 670 lbs 14 25

FEEDER PIGS 3 Two US 1-3 40 lbs 34 00, one Utility 40 lbs 29 00 --- per head

SHEEP 164 Slaughter lambs steady

SLAUGHTER LAMBS Choice 25-50 lbs 121 00-130 00, 55 75 lbs 91 00-116 00, 80-90 lbs 97 00 98 00, Good and Choice 90-135 lbs 60 00 86 00

SLAUGHTER SHEEP 20 00-50 00

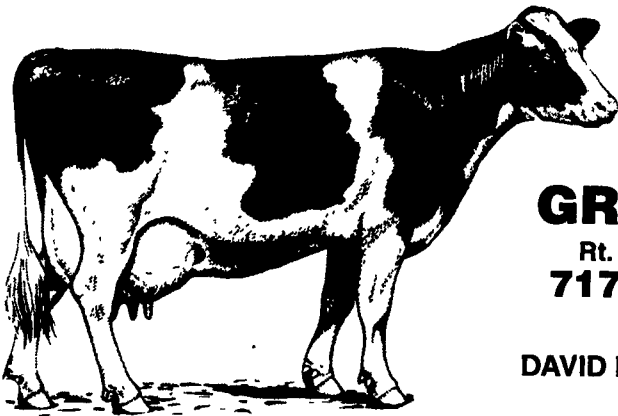
GOATS 39 [All sold by the head]

Large Billies 75 00 106 00, Medium 38 00-60 00, Large Nannies and Wethers 52 00-69 00, Medium 30 00-48 00, Large Kids 26 00-33 00, two Small 22 00

Feed those grains for big savings.

We will roast on your farm.

Those roasted grains are really tasty



SCHNUPP'S GRAIN ROASTING

Rt. 6 - Box 840, Lebanon, PA 17046
717-865-6611 Fax #865-7334
800-452-4004

DAVID N. GROFF, RD #3 Lewisburg, PA
570-568-1420

Spring Nursery, Produce and Greenhouse Flower



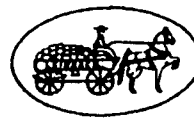
AUCTION

TUESDAY & THURSDAY

10 AM to ???



- Flower Coming In Strong
- Many Apples & Potatoes Coming Out Of Storage
- Tomatoes, Cantaloupes Starting



Call 717-532-5511 FOR ADDITIONAL INFORMATION

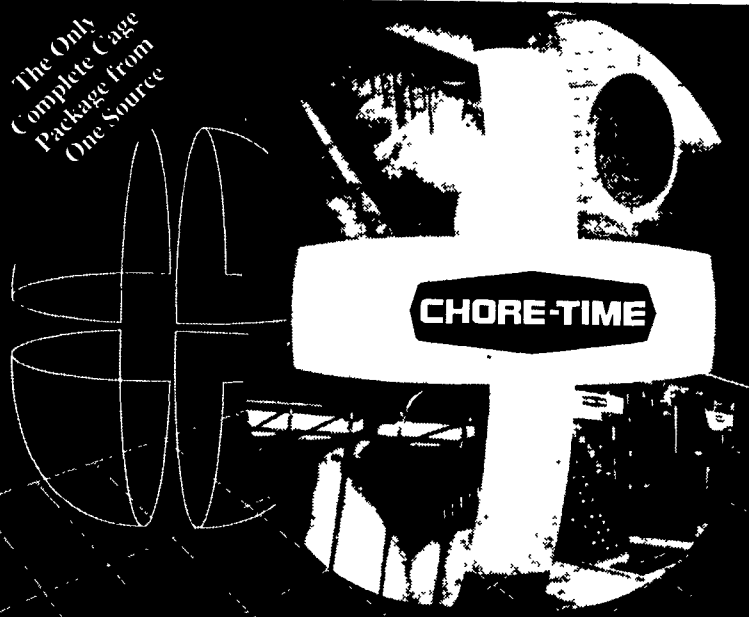
Leinbach Produce Auction

(1 Mile North of Shippensburg)

1120 Ritner Hwy., Route 11

Shippensburg, PA 17257

The Only Complete Cage Package From One Source



Northeast agri systems

Quality Buildings and Equipment

Chore-Time's Complete Cage Systems Package Gives You Better Egg Production

The complete cage systems package from Chore-Time offers egg producers better egg production at a competitive price with local technical service support. The complete package, which features Chore-Time's exclusive GALV-A-WELD* (galvanized after welding) cages, also includes

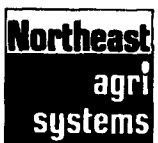
• Chore-Time's famous ULTRAFLO® Cage Feeding System—the leader in outstanding results and reliability

• Chore-Time's ULTRA-LIFT® XL Egg Collection System—the standard of the industry for gentleness and efficiency

• Chore-Time's Cage Nipple Drinking System—a simple, totally-enclosed system for providing more water to your birds

• Chore-Time Cage House Ventilation and Cooling Systems—excellent performance at a competitive price

So, join the producers who have already benefited from using Chore-Time Cage Systems. Improve your egg production with Chore-Time's complete cage systems package. Call today for more information



Northeast Agri Systems, Inc.

Flyway Business Park
139A West Airport Road
Lifitz, PA 17543
1-800-673-2580
Ph: 717-569-2702

Delmarva Office
305 University Ave.
Federalburg, Md.
1-800-735-6361
410-754-9434

CHORE-TIME

Dedicated to PRODUCT LEADERSHIP



Store Hours: Monday-Friday 7:30 am to 4:30 pm
24 Hour-7 Day Repair Service

WHITEWASHING with ADVANTAGE FARM WHITE

- DRIES WHITE • NO WET FLOORS
- IS COMPATIBLE WITH DISINFECTANT AND FLY SPRAYS
- DOES NOT RUB OFF EASILY
- WASHES OFF WINDOWS & PIPELINES EASILY



BARN CLEANING SERVICE AVAILABLE WITH COMPRESSED AIR

To have your barn cleaned with air it will clean off dust, cob webs & lots of the old lime. This will keep your barn looking cleaner & whiter longer

CALL US ABOUT ON THE FARM FLY CONTROL

Serving Southeastern Pa. And More

BEITZEL'S SPRAYING

Witmer, PA 17585 717-392-7227 or
Toll Free 1-800-727-7228 7:00 AM to 5:00 PM
CERTIFIED COMMERCIAL APPLICATORS
LICENSED 37 YEARS EXPERIENCE INSURED

5 Trucks For Air Cleaning And Whitewashing
RADIO DISPATCHED TRUCKS
Barn Spraying Is Our Business, not a sideline.
Spraying Since 1961