

MARK LIFT

J14 SN #11968, M20ESP SN #17291,
J19EP SN #18879 - All 24 Volt DC
Mark Scissors lifts, good for electrical maintenance

JLG LIFTS

40 FR, Dual Fuel LP, Liquid Gas, 8' Basket,
Rotator Basket, Paint Good, Engine VH4D, Tires
Good, SN 755989, SN 731916, SN 747568
40 FFDR 4x4 4WD

JOEL-BITT TOOL RENTAL INC.
Ph: 717-328-2686
Fax: 717-328-3327

FORKLIFTS

2,000 TO 15,000 LB.

\$2,000 & upwards

GAS/LP-DIESEL-ELECTRIC

Cushion-Pneumatic-Rough Terrain
New Komatsu Forklifts Available

PA INDUSTRIAL EQUIPMENT
(610) 369-9778



1997 CATERPILLAR 950 F SERIES 2

Fresh new paint, EROPS, Cab, 3rd Valve,
90% 23.5/25 Recap Tires, 4.25 cu. yd. Bucket
w/Bolt on Edge, 8300 Hrs. - **\$110,000**
CALL DON AT 610-869-0202



**1999 Portable Topsoil
Screener,**

4'x8' Double Deck Screen,
PTO Powered

\$13,500 814/832-2293

USED & NEW PARTS PRICED RIGHT

DISMANTLING

Cat	IHC	Galion
Case	Michigan	Wabco
John Deere	Hough	Dynahoe
Trojan	Terex	Koehring
Drott	Hein Werner & Others	AC/Fiat Allis

Dismantling Over 650 Machines For Parts
NATIONWIDE PARTS LOCATING SERVICE

In addition to our own large inventory, we have two
computerized parts locator services, nationwide &
Canada, ready to serve you. In less than a minute, over
600 used & new parts & equipment suppliers will receive
your parts request. Parts are located easily & at
substantial savings. Try Our Services

Save \$\$\$ Parts Shipped Anywhere Direct To
You.

All Parts Guaranteed
"We Return All Phone Calls"

BALANDA EQUIPMENT, INC.

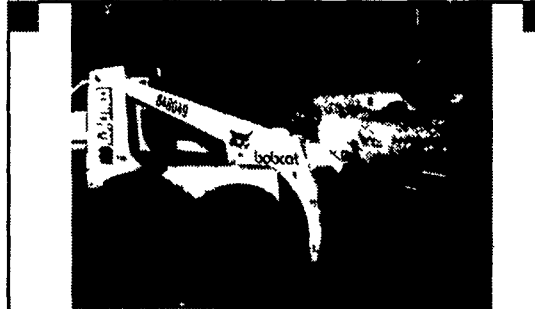
P.O. Box 407 • Route 29 • Palm, PA 18070
Phone: (215) 679-3000 • Fax: (215) 679-5777

TOLL FREE: 1-800-322-8030



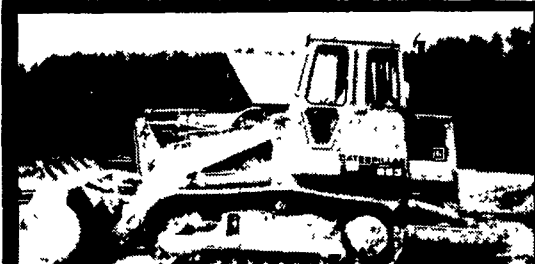
1997 KOMATSU PC 150 EXCAVATOR

Superbly Maintained, Serial Number 7988
1300 Hrs., Excellent Condition
\$74,500 • (717) 438-3776



Bobcat Skid Loader, runs & operates very good.

1-800-839-3338



1986 CAT 963

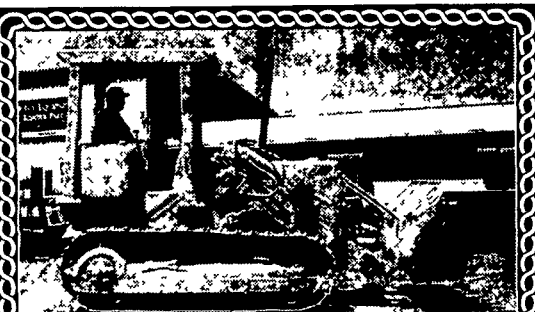
EROPS, Ripper with Fourth Valve, Excellent
Condition, Good Undercarriage, Strong, Tight,
Dry, Low Hour Machine

\$49,500 • 814-938-2946



**1993 Sellick
Tractor Lift**

6,000 Lb., 3 Stage, 22' Lift, Side Shifter,
Diesel **717-442-9334**



Cat 941/951 GRL Loader
5 to Choose from starting at
\$15,000 Sale Or Best

Heavy Equipment Loader Parts, Inc.

10070 Allentown Blvd, Grantville, PA 17028
No Sunday Calls (717) 469-0039

"BIG LOADER - SMALL PRICE"



**1982 Fiat Allis Model FL-20
Crawler Loader**

3-1/2 Yd. Bucket, Good Bottom,
61,000 Lbs., Runs Good, Has Noise In Engine

\$7,500 Or Best Offer

Ray Smith

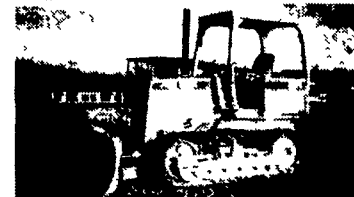
856-424-6300



ELECTRIC MOTORS

• Some Starters and Disconnects

★★★ 717-438-3354 ★★★



JD 450G Dozer, 6-Way
Blade **\$26,000**



Rex 3-45 Compactor, Sheep Foot,
w/Blade, Good Condition . . . Call



JD 544C Wheel Loader, Rebuilt
Engine & Trans, GP Bucket, Encl
Cab w/Heater **\$26,900**



94 JD 650G Dozer, Good
U.C. **\$44,000**

87 Cat 943 Crawler Loader, EROPS, Good UC **\$37,500**

86 JD 450E Dozer, 6-Way, Good UC, ROPS **\$20,000**

87 Komatsu D66S Crawler Load, EROPS **\$23,500**

O&K Trojan RH12 Excavator, 60" Bucket, Deutz Dsl, 70,000 lbs
Cheap Digging Power **\$16,500**

Case 450 Dozer, 6-Way, Weak U.C. **\$13,000**

Cat 966D Wheel Loader **Call**

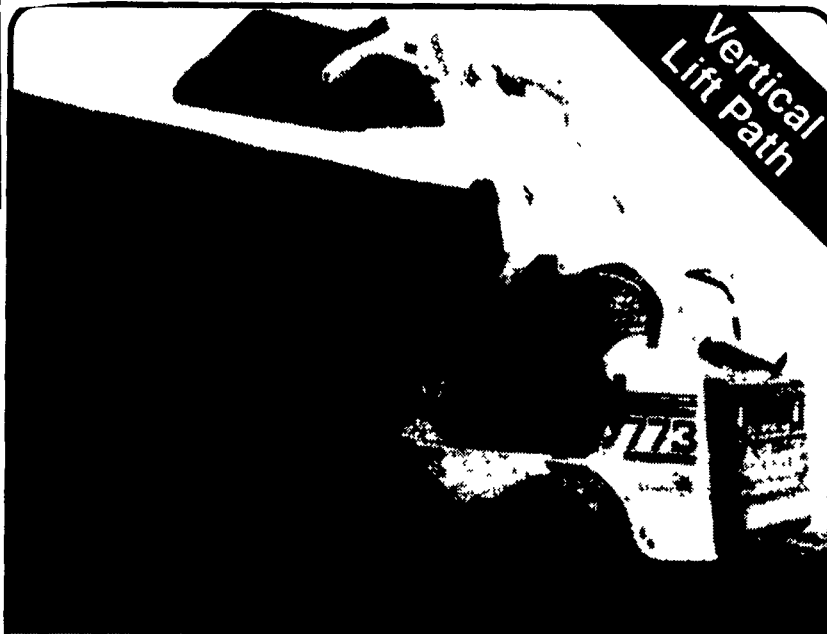
JD 755 Crawler Loader, ROPS **\$17,000**

JD 755B Crawler Loader, EROPS **\$29,500**

93 Ford 555D, ROPS, Low Hours **\$20,000**

Marklift 30' Man Lift, 4x4, Good Cond **\$9,800**

Weaver's Equipment Sales
RD#1, Box 418, Milton, Pa. 17847
Phone: 570-523-9598



See More. Do More.

The 773 G-Series is the most
operator-friendly loader ever built and here's why!



• New low-profile lift arms give super
visibility to sides, front & rear corners!



• State-of-the-art instrumentation
displays dozens of operational,
diagnostic and monitoring features.

• Large, high-visibility front door, efficient
cab heater for all-weather operation.

• Fully-adjustable suspension seat.

• New rear-pivot seat bar design.

• Vertical lift path and extra reach
are ideal for truck loading!

1,750 lb. Rated Operating Capacity	118.2 in. Lift Height	46 hp Liquid-Cooled Diesel Engine	16.7 gpm/27 gpm Auxiliary Flow/ High Flow
--	-----------------------------	---	---

SALES • RENTAL • PARTS • SERVICE

ASK ABOUT 0% FINANCING!

Your Bobcat Headquarters:

Bobcat of Reading

Division of Reading Kubota
5045 Pottsville Pike, Reading, PA 19605
Along Rt. 61, 3 miles north of Reading

Call Tracy for information on Bobcat equipment and
special financing rates available for limited time

Phone
610-926-2441



Mobile
610-207-4909