

FARM EQUIPMENT

Int'l 756 Dsl, Cab, Less than 200/hrs on Complete Overhaul, New T/A \$8,900 570-659-5654

JD attachment, backhoe, w/24" bucket, very good condition, \$1500 OBO. 610/847-5864.

JD 710, 7 shank soil saver, pull type w/front disc, ex. cond. \$4500 obo. 717-859-3158

Kubota L175, 2WD, 17hp, rebuilt engine, 3pt hitch, 3000 hrs., \$2750. Lanc. Co. 717/656-2591 x3027.

Superior Oliver drill, 10 disk with seeder boxes & wooden wheels, \$250. JD 1 row potato planter on steel with good fertilizer box, \$250. JD 14T baler (works) \$500. JD "B" tractor, serial # 157594, good paint, \$1,250. MM, Case, AC & JD cultivators & parts, BO. Model HA Hough pay loader on LPG, runs good, make offer. International 345 engine set up for LPG, make offer. 570-888-4096.

2 20.8x38 tires, good for duals, \$125. Hawk Blt spreader chassis w/ airplane tires, Brady hammermill, \$120. Corn sheller, \$75. Corn crib, \$200. 610-489-7831

504 Farmall pro-rebuilt from trans to rad., new frt tires, all less than 100 hrs. 3 bottom JD 3pt plow. 20 blade transport offset disc w/cyl. 4 bot trip JD 3pt plow. 3 section spring tooth. All \$4,500 to settle estate OBO. 610-358-2731 keep trying.

JD 7200 6 row conser, SP spray & pop monitors. Gehl 1060 harvs, hayl hd. 570-682-8376.

Case 1835C, 2400 hrs, 2 buckets, bale spear, forks, diesel, \$8000; Farmall Super A, new rubber, rim & paint, VG, \$2000. 301/293-2310.

AC 333 no-plow corn planter, dry fert, insecticide boxes, 4RN monitor, vg cond. Ce. Co. 410-658-2022

JD 655 compact tractor, 20hp dsl 4x4, hydro, 560 hrs, w/new Woods 5' mower, \$9000. 717/338-9489.

Patz unloaders, 20' RD820 silo unloader, emptied 1/2 silo, exc shape, \$5,000 OBO. 20' RD 8820 silo unloader, emptied 2 silos, exc shape, \$4,500 OBO. Call Mercy's Farm Equipment, 802-326-4143.

White 2-180 CAH, axle duals, triple remote, \$11,000. 717/535-4056.

JD 870, MFWD, ag tires, 160 hrs, like new, 3pt rotary mower, 440 loader, 660 3pt tiller, \$19,500. 570/668-3473.

Corn binder, ask \$2,000. Steel wheel, ground drive manure spreader, exc cond, ask \$1,000. 6' 1000, 6pm Baur Irr pump, ask \$1,500. 8' rotovator, HD 28" heads, asking \$1,500. 570-689-7830.

Cat tractors: 10, 15, 20, 22, 30, 35, 40, 50 & 60. Parts for same. Also Cat D2 dozers. 908/850-1565.

10' Sunflower no-till drill, model 9412, only used 150 acres, like new. 717-569-8925

Worthington golf course tractor w/continental engine, good original. (2) 1937 G JD s/n1451&1411, both run good. Between 8am-6pm, 914-724-3315.

3pt 2R JD corn planter, \$535. 2R steel wheel potato planter \$175. Small 2-section 3pt harrow \$160 Juniata Co, 717-734-3987.

We have available large source of Illinois farm sale tractors and can have in less than a week. Call us with your needs of late model JD, IH, Case IH. Prices gladly quoted over phone. Zelsloff Eq. 800-919-3322

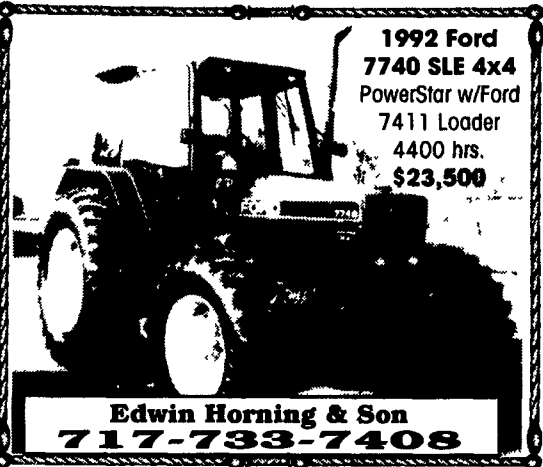
Caterpillar D4 crawler dozer, engine needs work, \$1,500 OBO. Heavy Equipment Loader Parts, Grantville, PA, 717-469-0039.



"First in Synthetic Lubricants"
The most technically advanced engine protection money can buy
 Full line of gas and diesel oils • gear oil • auto trans oil • hydraulic and hydraulic trans oil • compressor oil • greases
 Chris R. Beiler Jr.
 5420 Limeville Road
 Parkesburg, PA 19365
 717-442-8949

KINZE CORN PLANTER MODEL 2600

12R Corn Planter w/Units for Planting Beans, Interplant, No Till, Planted 500 Acres, Like New
NI V-TYPE SIDE SLINGER MANURE SPREADER
 Good Shape
No Reasonable Offer Refused
610-588-2782
 (If no answer, leave message. Call will be returned.)
Downsizing Operation. Other Equipment Available.



1992 Ford 7740 SLE 4x4
 PowerStar w/Ford 7411 Loader
 4400 hrs.
\$23,500

Edwin Horning & Son
717-733-7408



630 JOHN DEERE TRACTOR
 3 Pt. Hitch w/Roll-a-Matic Front - **\$5,300**
★★★ 717-438-3354 ★★★

QUALITY USED EQUIPMENT

- Ford 600 Gas, 3 pt., PTO w/Loader ... \$4,900
- Ford 9N, 3 pt., PTO w/Loader. \$2,900
- AC D15 Gas, PS w/Industrial Loader & Backhoe \$6,900
- JD 1020, 38hp Gas, PS, Live PTO, Very Nice Cond... .. \$5,900
- JD 1020 Gas, PS, Live PTO w/JD 47 Loader, Good Cond. \$8,900
- 74 Ford 3000, gas, PS, 8x2 trans, 3 pt, live PTO, good cond. \$5,900
- 73 Ford 4000, gas, PS, 8x2 Trans, 3pt, Ind PTO, 14.9x28. \$6,900
- Ford 1720 27hp Diesel, FWD, Shuttle, PS, 3 pt, Live PTO, Ag Tires, w/Ford QT Loader, 420 Hrs. \$12,500

215/536-3321 888/393-3208
 "Cash buyer - good used equipment"

For your landscaping and orchard pruning needs see us for the Stokes brand tripod Aluminum stepladders Sizes from 5 to 12 ft with up to 16 ft available in special orders Significantly lighter than comparable wood models

Wooden hard bottom bushel baskets for displaying trees and bushes 1/2 bushel tub styles also in stock
 Kasco protective pesticide helmets and parts
 We also have the standard size 10-1/2"x16" garden center trays and your name and address can be printed on the sides for orders of 3500 plus Many customers have found them to be great for encouraging repeat sales A stapler is needed for this low cost item

Now is the time to start thinking berry cartons.
 Call for details.

Freon Orchard Supplies
 231 Powder Mill Hollow Road
 Boyertown, PA. 19512
 Phone 610-367-2934



J & L Hay-Saver Feeds 20 Cattle

New, improved, round hay-bale feeder feeds large or small hay bales along with square bales. University proven hay savings. This feeder is built of heavy 1 1/4" pipe and heavy steel for ring.

Available with 3/4" plywood floors.
 This feeder is built to last.

J&L Equipment
 156 Pompey Hill Road, Stoystown, PA 15563
814-893-5086



JD 4840 Cab, Power Shift, Duals \$15,800

- JD 4440 Cab, 2000 Hrs, Power Shift, New 20 8x38 Tires \$21,500
- JD 4640 Cab, Power Shift, Duals. \$16,500
- JD 4840 Cab, Power Shift, Duals. . . . \$17,000
- JD 2955 Canopy \$13,500
- JD 4440 Power Shift Cab, Duals . . . \$17,900

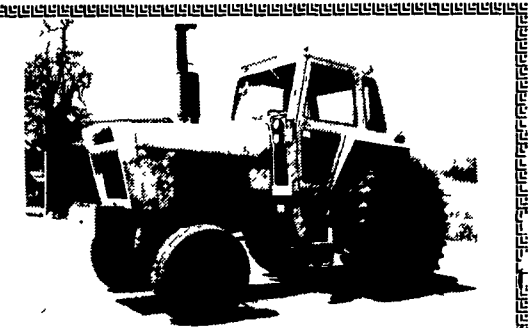
(717) 530-8089

ESCH HAY EQUIPMENT

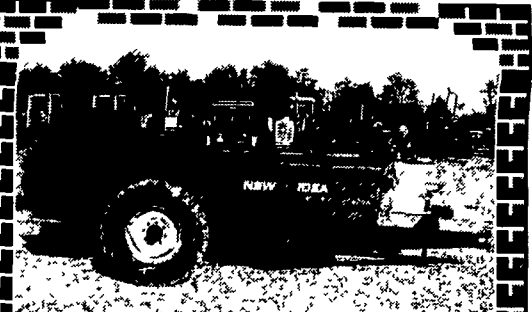
Specializing in hay balers
 Home of the Mini-Baler
 Mini baler w/8x11 bale, standard pickup \$3,750
 NH 311 baler w/#70 thrower, PTO \$3,850
 NH 276 baler w/engine mount & 1 year warranty \$3,300
 NH 277 baler w/thrower, PTO, excel cond \$3,200
Road Service Available
 10 years experience
717-687-0321
 1324 Village Rd., Strasburg, PA 17579

- Case 2590 cab & duals \$9,200
- Case 870 diesel w/cab \$6,600
- Ford County (6), 113hp, 4x4 cab \$5,800
- IH 544, 52hp gas, hydro w/ldr \$5,800
- IH 624, 60hp, diesel, cab, loader \$5,800
- IH 474 dsl, hydro w/ldr \$7,600
- IMT 542 40hp dsl, 600 hrs \$5,200
- MF 1100, 95hp diesel, m p, good cond \$6,500
- Case 2390 cab & duals \$9,200
- Kubota B7100, 4x4 ldr/mow turf tires \$7,800
- Cockshutt 1855, cab, ft wts, 3400 hrs \$6,500
- Farmhand Tub Grinder, PTO, tandem axle \$7,200
- Duals Snap On 18 4x38 90% \$650
- Skid Loaders: NH L555 dsl, L455 dsl L445 dsl

MADEY FARMS
814-467-8839



1370 Case
 Trans rebuilt, dual remotes, differential lock, A/C, 18.4x38 tires 85%, sharp, field ready
Lanc. Co. 610-593-6112



NI 217 PTO, 125 Bu, Top Beater \$1,995
 Also Available:
 All Spreaders Are In Good Working Order!
 NI 206, Ground Drive, 95 Bu, Top Beater..... \$1,250
 NI 215, PTO, Top Beater..... \$1,495
 Int. 540, PTO, Litter Pan. \$1,495
 MF 130, PTO, 110 Bu., Top Beater . \$1,795
 NH 512, PTO, 170 Bu, Litter Pan \$1,595

Taneytown Farm Equipment
410/751-1500

DH 210



DRY HILL
 554 N. Cross Roads
 Lykens, PA 17048-9744
 (717) 365-3109 Call 8.00-8.30 a.m.
 Toll Free 1-877-246-3503
 99 Dry Hill 32' Lagoon Pump.....**SOLD**.....CALL
 00 Dry Hill 32' 4 Wheeler Lagoon Pump**SOLD**.....CALL
 00 Dry Hill 8'-12' Ext. Pump.....**SOLD**.....CALL
Attention Manure Haulers - Rentals Available Immediately
RENTALS AVAILABLE AT:
 Rovendale Ag. Barn Eq.
 Watsonville, PA (570) 538-9564
 Daniel JR Petersheim
 Gordonville, PA (717) 768-8577
 McMillen Bros.
 Loysville, PA (717) 789-3961

SMITH'S FARM EQUIPMENT LLC

30 Acker Road, Newport, Pa.
 717-567-3562
 www.smithsfarmequipment.com

- Hardi 500 gal. Sprayer
- IH 340 Diesel, NFE
- IH 544 Cab, Gas Utility
- IH 584D Utility
- IH 686D
- IH 856D WFE, 3PT
- IH 986 Cab
- IH 1066 Cab
- IH 1086D w/Cab
- AC C
- David Brown 990 w/Bush Hog Ldr.
- JD 870 D w/440 Loader
- JD 2640
- JD 4040 Cab
- Kubota B6100 2WD
- Oliver 1250G WFE
- JD 1219 Haybine
- JD F725 Mower
- NH 268 w/53A Thrower
- NH 270 Hay Liner
- Claas Rollant 46
- NH 479 Haybine
- NH 489 Haybine
- NH 555 Skid Loader
- NH 553 Skid Loader
- NH LX485 Skid Loader
- Case 1835C Skid Loader
- NI 2R Corn Picker
- IH 2 MH Corn Picker
- NI 324 Corn Picker
- Wide Row
- NH 855 Round Baler
- JD 510 Round Baler
- JD 4400 Combine 13' Flex
- JD 6600 Combine
- IH 715D Combine
- IH 12' Harrow
- Brillion 14' Harrow
- Tye 10' Drill
- Pequea Trailers

CLAAS BUSH HOG WOODS

TRACTOR REPAIRS

- We Have Experienced Ford Tractor Mechanics That Specialize In Ford Tractor Repairs -
- We Specialize In Any Size Ford Tractors And Have Since 1921
- We Specialize in Select-O-Speed Ford Transmissions
- Call For Quotes

1-800-309-FORD (3673)



KELLER BROS.

RD 7 Box 405
LEBANON, PA