

# Boyd Selects Champions At 2000 Ohio Angus Super Star Show, Sale

ST. JOSEPH, Mo. — Angus enthusiasts paraded 102 entries at the 2000 Ohio Angus Association Super Star Show and Sale in March in Columbus, Ohio.

Charles Boyd II, Mays Lick, Ky., evaluated entries before selecting champions.

Champion Hill Ext 1300 claimed the grand champion bull title for Champion Hill,

Bidwell, Ohio. He's a September 1998 son of N Bar Emulation EXT.

James and Sharon Winter, Ashville, Ohio, led the reserve grand champion bull. Paradise Fullback 810 is a January 1998 son of Rito 9FB3 of 5H11 Fullback.

In the female show, Sunset Valley Erica 926 captured the grand champion honors. Sunset

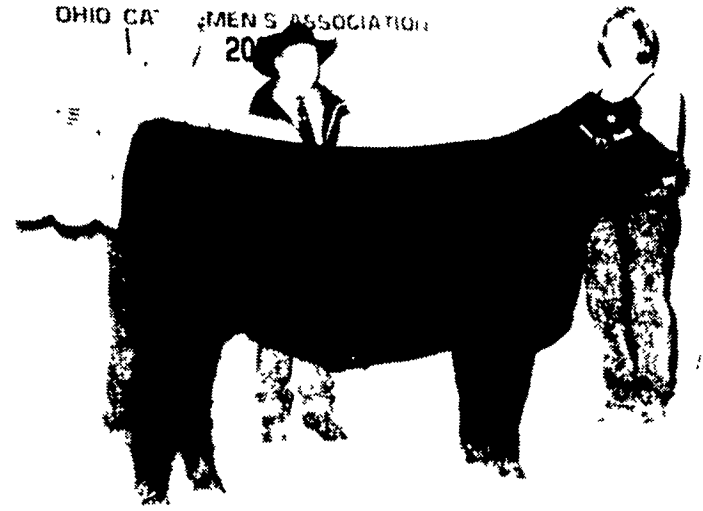
Valley Angus, Gallipolis, Ohio, showed the January 1999 daughter of Whitestone Widespread MB.

Champion Hill, Bidwell, Ohio, showed the reserve grand champion female. Champion Hill Cheyenne 1387 is a November 1998 daughter of Whitestone Widespread MB.

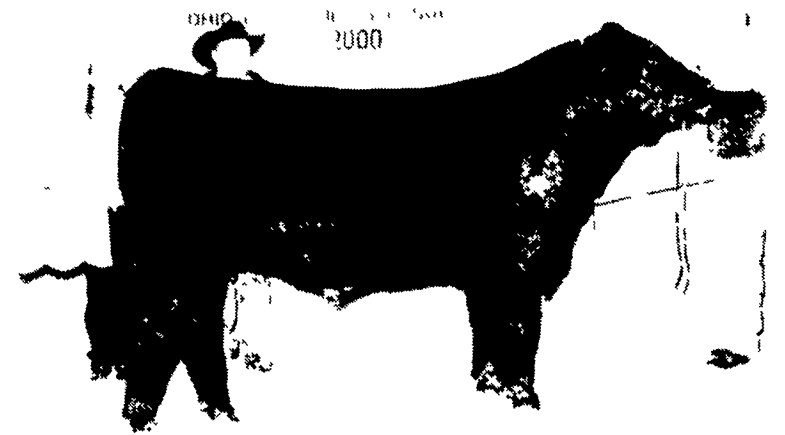
Tous Blackbird 7310 walked

away with the grand champion cow-calf pair title. The Ohio State University, Columbus, Ohio, owns the February 1997

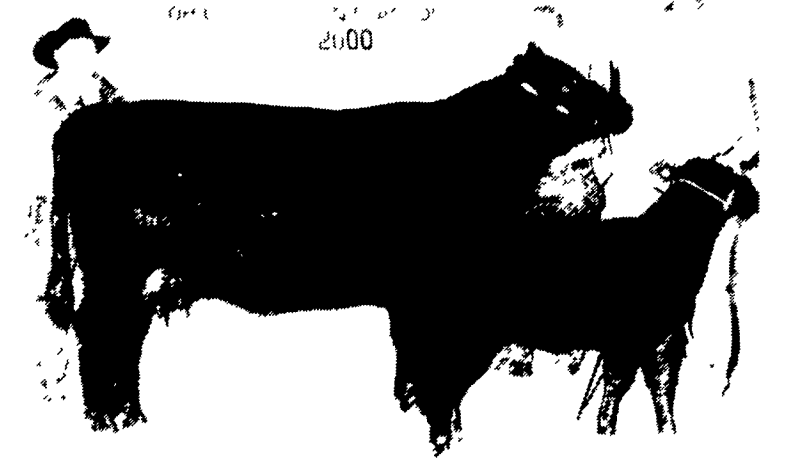
daughter of Rito 3X17 of Rita 9FB2 Ext. A January 2000 heifer calf by G A R Exacto 5687 is at side.



Sunset Valley Angus, Gallipolis, Ohio, showed the grand champion female at the 2000 Ohio Angus Association Super Star Show and Sale. Sunset Valley Erica 926 is a January 1999 daughter of Whitestone Widespread MB.



Champion Hill, Bidwell, Ohio, led the grand champion bull at the 2000 Ohio Angus Association Super Star Show and Sale. Champion Hill Ext 1300 is a September 1998 son of N Bar Emulation EXT.



The Ohio State University, Columbus, Ohio, showed the grand champion cow-calf pair at the 2000 Ohio Angus Association Super Star Show and Sale in March in Columbus, Ohio. Tous Blackbird 7310 is a February 1997 daughter of Rito 3X17 of Rita 9FB2 Ext. A January 2000 heifer calf by G A R Exacto 5687 is at side. Charles Boyd II, Mays Lick, Ky., evaluated the 102 entries.

## Gelbvieh Sire Summary Available

WESTMINSTER, Colo. — The 2000 American Gelbvieh Association Sire Summary is available to commercial and seedstock cattle producers. This year's summary contains 1,152 progeny tested sires and 743 genetic indicator sires. The University of Georgia completes the Gelbvieh National Cattle Evaluation three times per year.

The American Gelbvieh Association has required performance data on all registered animals for the last 28 years. In the past five years, the AGA's performance record database has nearly doubled. The AGA has also led the way in calculating new EPDs on important traits like calving ease and gestation length.

The number of sires with carcass EPDs has increased through the Sire Carcass Test Program, a structured progeny evaluation. This program provides free semen to commercial cowherds willing to collect and report carcass data. For more information on this program contact Bob Weaver or Surcy Peoples at the AGA office, (303) 465-2333.

Contact the AGA today to receive your free copy of the 2000 Gelbvieh Sire Summary or find it on the AGA website at [www.gelbvieh.org](http://www.gelbvieh.org).

**FARM AUCTION**  
4650 L Marietta Ave., Columbia Pa. 17512  
Dir.: Rt. 23 West One Mile Past Kinderhook Rd.  
**May 6, 2000**  
At 9 AM  
40 Acres M/L With A 1680 S.F. Brick Home.  
Selling For  
**Freda Conrad Estate**  
Town & Country Auctions  
Elizabethtown, Pa. Phone 717-367-6301  
Auctioneer R.L. Keck  
Sale Manager John Gainer  
AU-003722-L

**ANNUAL SPRING AUCTION & CONSIGNMENT SAT., MAY 6TH**  
10:30 AM  
F.C. WILDER EQUIP., 8371 RT. 353 GOWANDA, NY

F.C. Wilder equipment will be offering the following farm equipment at public auction and also accepting consignments. Located on Rt. 353, approx. 8 mile south of Gowanda, 4 miles north Catt. and 18 mile north of Randolph. Watch for R.G. MASON AUCTION arrows.

**TRACTORS** • Int 484 diesel w/new GB loader sharp nice; Int. 276 factory front blade turf tires; Oliver Super 55; Cockshut (Oliver) 1850 gas w/cab, Zetor 8011; Allis Chalmers 7040 diesel w/cab 20.8x38 sharp; IH B414; AC D272 diesel (Rare Collection); Ford 8600 w/cab 20.8x38; Mitsubishi 180 4x4 compact; JD 1010 PS 3 pt looks nice; MH 33 NF factory 3 pt (Collector); MF 65 Gas; Mf 65 diesel ps.

**EQUIP.** • Plows Oliver 4x14 sm.; Jd 4x14 sm., JD 3x16 3 pt; AC 3x14-16 3pt; Ford 3x16 3 pt; Int. 2x14 tr.; Int. 3x14 tr.; Disc AC 12' trans; JD 10' AW trans; Oliver 12' trans; Drags (Int 16' trans; JD 2 sec. & 4 sec.; 8' 3 pt drag); Packer single 8' crow packer trans. Wheels; JD 1240 4 row; Ford 2 row 3 pt cultivator; Hay equip. (3 pt 7' sickle mower; NH 9' Cuditioner nice; NH 499 hydro sowing; NI 256 rake; Kuhn 3 pt. Rake tender; Ford PTO baler; E-Z Trail 916 bale wagon w/wide E-Z Trail gear like new); Gehl 1 row corn & pickup head chopper nice; Rhono rotary cutter 6' 3 pt; Lilliston 7' 3 blade mower; York stone rake 6' (pull type/wheels); Loader (Ford 4000 or 5000); Freeman loader (fits MH 30); Front mount blade (Ford 600-800); Miller 20' hyd. fold trans. disc; Ford 501 mower; NH 469 haybine; NH self propel 9' haybine; JD 3800 chopper 2 row corn & pu head; NI 2 row picker & grinder; IH 400 Cyclone planter w/fert.; JD 13 hole drill w/seed-er; JD 120 Chuck Wagon self unloading w/JD gear; 16' Equip. trailer new; NH 3 pt tedder, 3 pt bush hog; 3 pt snow blower; 3 pt seeder; Oliver spreader; HD 3 pt post hole auger/12' auger; Utility body (for 1 ton truck); 3 Wheeler 1984 Yamaha 225 DX nice; Lots of good used tire some on rims; Front & rear weights; Hyd. cylinders; JD H parts; Ford 501 sickle bar mower; 3 pt hitch parts; Portable welder; and more.

**AUTO** • 1985 Olds Cutlass 40K  
Good line of equipment with consignments being taken daily until Friday May 5th.  
Call 716-257-3700 or 567-8844

**TERMS** • Cash or Good Check w/Proper ID Credit Cards Accepted

**R.G. MASON AUCTIONS**  
FILLMORE, N.Y. 567-8844

**PUBLIC AUCTION SATURDAY, MAY 6**  
9:30 AM  
FREDERICK FAIRGROUNDS  
OVER 100 LAWN & GARDEN TRACTORS, COMPACTS & COMMERCIAL

Allis Chalmers: T811, Ariens GT17, CASE 222; Cub Cadet 2165, 2072, GMT150, 1811, 1250, 129, 1015, 1641, 107, (2) 108's, 126, 128, 129, 1450, 1730, 1812, (2) 1862's, 2082, 2130, 2135, 2182, 782; Dynamark; Ford LT12H, GT65, YT11, YT16; Gravely ZTR, 350; Homelite T15; Huskee (2); Hechinger 12.5, John Deere 240, 110, 420, 68, (2) 425's; (2) 445's, 318, LX172, 112; Kubota T1600, G4200; MF12; MTD Tiller, Chipper, 134; Murray Rider, 22543B; Sears, LT10, Others; Simplicity (3) 4211; 16LTH, 4208, 4211, 5212, 310H, Snapper LT16, 7HP; Toro Rider, 520, Others; Troy Bilt: (3) Chippers, Sickie MWR, (3) Tillers; Wards 12; Western Auto; White Chipper; Commercial: SCAG-14, 18, 22, Walk Behinds (NEW); Howard Price; J Deere F935; MTD-PRO (New & Demo) MMZ2554, 2560, OS820 Overseeder, 1448H, 1852H, 2054H, 1448G, 1652G, 1436H, 1448H, 1648H, 2260H; (New & Demo) Cub Cadet '99 Models: (2) Yardbugs, 1300, 1600's, 2130's, 3225's, 3186, 2155, 1405, 3205's (ALL TWO) (2) YEAR WARRANTY; Compact Tractors: J-Deere 770; Ford 1220 4X4, 1320 4X4, 1920 4X4 w/Loader; New Holland 1925 4X4; IH (2) Cub's, 254 w/Mower; Cub Cadet 7305 4X4, 7265 4X4 w/Loader; 7274-4WD w/Loader; Plows, Snow Blowers, Trimmers, Chipper-Shredders, Snow Plows, Chains, Attachments, Accessories, Baggers, Blowers, parts, Many Miscellaneous Items, ETC., ETC.

**VISA, MASTER CARD**  
(3% CREDIT CARD FEE), Cash or Check  
Bank Financing w/PRE-APPROVED  
**CREDIT ONLY** - CALL 301-662-1125  
Some units sold with Warranty-Delivery Available  
Inspection: Friday, May 5th, Noon til 7:00 p.m.  
Location: Frederick, MD Fairgrounds,  
797 E. Patrick St., Frederick, Maryland  
CENTRAL MD FARM EQUIPMENT  
DEALERS ASSN  
**Jacobs Auctioneers**  
Food by Lyn Field Catering

**Tired of ... Rising Heating Costs?**  
Eliminate Them With the Classic Outdoor Wood Furnace

"The Classic Outdoor Wood Furnace is the BEST on the market" It delivers safe, clean, thermostatically controlled heat for your home, barn, business, workshop, garage, pool, greenhouse, and more

- Works with existing heating systems
- 78% efficient! That's over 6,300 BTU's per pound of wood.
- Provides all domestic hot water.
- No indoor smoke, dirt, carbon monoxide, or chimney fires
- UL & CSA listed plus EPA tested

Available in carbon steel & titanium enhanced stainless

Kenneth Stauffer Phone 570/539-4606  
RR 1, Box 307 Toll Free  
Mt. Pleasant Mills, PA 17853 888/539-4606