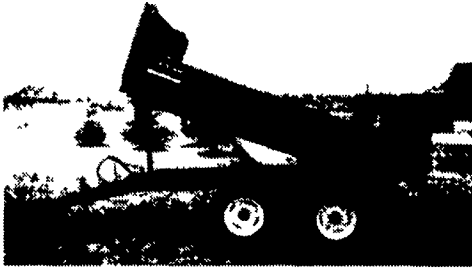


# FARM DUMP TRAILERS

(Direct from the Manufacturer)

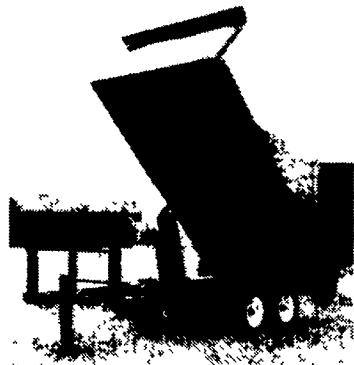
## 6-Ton Dump Trailer

- 10 ft. x 7 ft.
- Floating Tandem Axle
- 3 ft. Front, 3 ft. Tailgate & Grain Chute
- 16 in. Extendable Sides
- 10 ga. Floor & Sides
- 11Lx15 Flotation Tires
- 2-Way 4 in. x 24 in. Hydraulic Cylinder includes hoses



## 7-Ton Road Dump Trailer

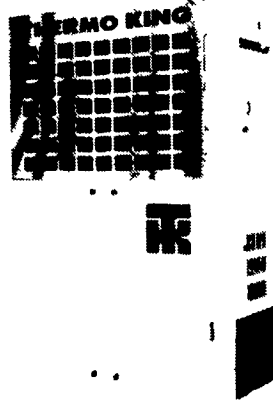
- Fifth wheel or bumper type
- 16 ft. x 8 ft. deck 3 ft. front rack and pockets side & back
- D C hydraulic pump & battery mounted in locking tool box.
- 12 ton drop leg jack
- 10 ga. floor
- 6x3x3/16 tube main frame
- Sealed beam lighting
- 7000 lbs. per axle rating
- Electric brakes on both axle
- 16" tires on white spoked rims
- \$6400 U.S. delivered in Northeast U.S.A



## BERKELMAN'S WELDING

RR 7, AYLMEER, ONTARIO, CANADA N5H 2R6  
(519) 765-4230

## Diesel Powered Refrigeration Units



## Thermo King Model Sentry TC

- \* Automatic Start/Stop
  - \* Multi-temperature Capability
  - \* R404a Refrigerant
  - \* 27,000 btu @ 0°
  - \* Three year compressor and engine warranty
  - \* In Stock
- Excellent unit for storage or locker applications  
Installation and Service Available

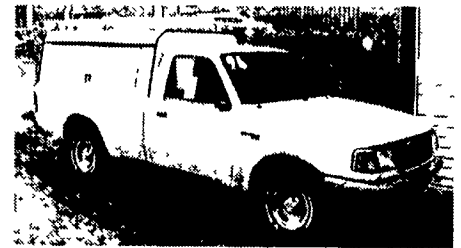
**SUSQUEHANNA SERVICE COMPANY**  
Quarryville, PA  
717-284-3760

## FOR SALE



Truck & Trailer, w/Ball Hitch & Deck, Will Divide. Look & Make Offer!

717-653-1716



## 1996 RANGER XLT

3.0 V6, Auto, PS, PB, A/C, Tilt, Cruise, 51,000 Miles, Shelves In Bed, White

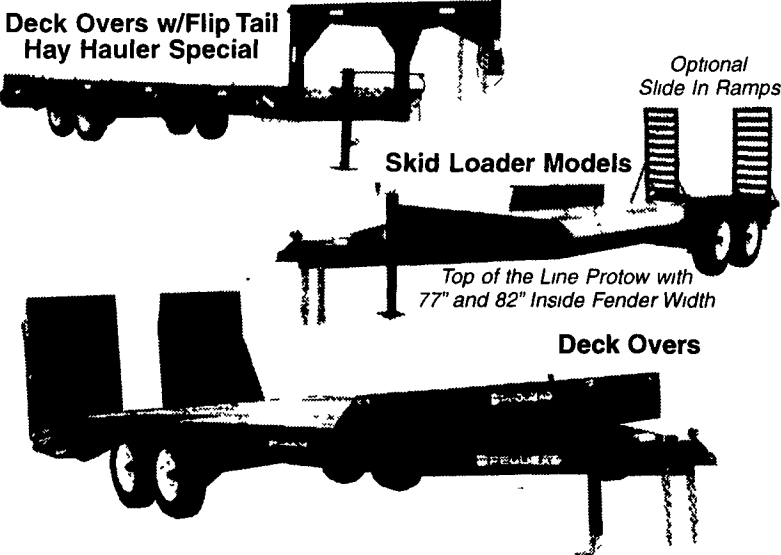
\$9,995

## REBER AUTO CO.

Lincoln Ave. & Cumberland Sts.  
(for 29 yrs.)  
Lebanon, PA 717-273-5941

**NEED A TRAILER AND WANT TO KEEP YOUR COST DOWN? SEE BINKLEY & HURST BROS.!**  
**NEW - DEMO - USED**

Deck Overs w/Flip Tail Hay Hauler Special



Also Eager Beaver 20 Ton Construction Trailer

Also Miscellaneous Truck Bodies

1. New Eager Beaver 20 XPT Pintle Hitch with Budd Wheels (NE 7498).....Call Dean For Super Deal!
2. Used Custom Fab Skid Loader Trailer, 16 Foot Deck, 2-5/16" Ball Hitch, (2) 6000 lb. Tandem Axles, With Inspection (UM 4394) Don't Miss It!.....Price Reduced by \$500! Was \$1,750 Now \$1,250
3. Coming Soon - Used Eager Beaver 15 Ton Air Brake Trailer, Rebuilt (UM 4156). Super Deal, New Deck.
4. New Pequea G10 16 Foot Flat Gooseneck with 4 Foot Flip Up Beaver Tail for 20 Foot Level Deck for Hay Hauling, etc. Also, Slide In Ramps Underneath Beaver Tail, 225-15 D Tires, 6 Lug Tandem Axle Torflex Suspension with (2) 6000 lb. Axles, 10,000 lb. GVW (NE 6908).....Discount to Only \$4,300
5. Approx. One Year Old 16,000 lb. GVW Gooseneck McElrath Trailer, 20' Flat Deck Plus 5' Beaver Tail and Ramps with 215/75R17.5 Radial 16 Ply Tires, Tandem Axle, Spare Tire Included.....\$6,500
6. 24 Foot Flatbed Truck Body x 96" Width with Lift Gate and 4" Wide Winch Straps, Wood Floor, Good Cond. except Paint Fair. Only \$1,750
7. 1987 Ford XL350 Truck, Dual Wheel, 5 Speed, 460 Fuel Injected, A.C., 85,000 Miles, with 12' Flatbed and Trailer Hitch.
8. New Pequea 414 Deck Over Wheels with 6' Mesh Ramps, 4,000 GVW with Electric Brakes on Both Axles (NE 6676).....\$1,950
9. New Pequea G16, 16,000 Lb. GVW Gooseneck with 20' Flat Deck and 5' Beavertail with Flip Up Type for 25' Flat Deck and Slide in Ramps (NE 7050).....\$7,300

# KELLER BROS.

(Buffalo Springs) Lebanon, PA

717-949-2000 or 1-800-363-2767

LEBANON COUNTY'S HEAVY DUTY TRUCK HQTRS.

Over 100 Clean Pre-Owned Vehicles In Stock At All Times!!

<p><b>1996 FORD F250 XL</b> 4x4, AT, V8, A/C, Cass., Alloy Wheels, Black, 30,000 Miles</p>	<p><b>1996 FORD F350 4X4 DIESEL</b> AT, XLT, Black, Very Clean</p>	<p><b>1993 JEEP WRANGLER</b> Soft Top, 4x4, 5-Spd., PS, PB, Black, Very Clean</p>	<p><b>1994 FORD F-250 4x4</b> V8, AT, A/C, 2-Tone, Only 30,000 Mi., Clean</p>
<p><b>1988 FORD RANGER 4X4</b> AT, 6 Cyl., XLT</p>	<p><b>2000 F250, F350, F450, F650 &amp; F 750's</b></p>		<p><b>1997 FORD F250 XL 4X4</b> Diesel, Heavy Duty, DK Green, One Owner, Just Traded</p>
<p><b>1996 FORD F250 SUPERCAB 4X4</b> AT, XLT, 460 Gas, Loaded With All Options Tan</p>	<p><b>XL, XLT's, Lariats, Single Axle, Duallys, Gas &amp; Diesels, Super Cabs, Short &amp; Long Beds, Cab &amp; Chassis, 4x4, 4x2</b></p> <p><b>Hurry For Best Selection Only 15 11 Left</b></p>		<p><b>1998 DODGE RAM 1500 QUAD CAB</b> Laramie SLT, 4x4, At, A/C, Most Options</p>
<p><b>1997 FORD F250 SUPERCAB 4x4</b> Diesel, AT, XLT Trim</p>	<p><b>1993 TOYOTA 4-RUNNER</b> 4x4, AT, A/C, AM/FM/Cass</p>	<p><b>FORD RANGERS</b> 4x4 SUPER CABS 3 To Choose From 1997 (2) 1999</p>	<p><b>1997 NISSAN QUEST XE</b> 7-Passenger, All Power Options, 34,000 Miles, Spruce Green, Very Very Clean</p>
<p><b>1987 FORD BRONO 4X4</b> XLT, AT, V8, Looks New, Low Mileage</p>	<p><b>1999 FORD EXPEDITION XLT</b> V8, AT, A/C, PW, PL, 3rd Seat, One Owner, Only 14,000 Miles</p>	<p><b>1995 CHEV 3500</b> 4x4, Silverado, AT, Loaded, HD Suspension Pkg., One Owner - Just Traded</p>	<p><b>1992 CHEV S10 EXTEND CAB</b> 4x2, 6 Cyl., 5-Spd., Tahoe Pkg., Low, Low Miles, Just Traded</p>

## BINKLEY-HURST BROS. INC.

133 Rothsville Station Rd.  
P.O. Box 0395  
Lititz, PA 17543-0395  
(717) 626-4705 1-800-414-4705



Fax 717-626-0996

www.binkleyhurst.com

Farm Plan A Service of FPC Farm 1st

**KELLER BROS. FORD HAS SERVED CENTRAL PENNA. AREA FOR MORE THAN 78 YEARS.**

