



2 Copeland Cooler Compressors, 10hp w/remote condensor & blowers. LonCo, 717-733-8275.

Kiln dried 1" cherry, oak & maple lumber. 301/334-1317.

ACR Metal Roofing Dist.

Agricultural, Commercial & Residential

Metal Roofing & Siding

Low cost, Fast delivery, Free info.

Call (610) 670-6523 Ext. 6

130 Bran Rd. Sinking Spring, PA 19608



J & K Homes & Buildings
Specializing in Post Frame Construction

Horse Barns • Riding Arena
Garages • Equipment Storage
Self Storage
Customized Buildings

For a Free Estimate or Building Information Call
717-789-4245

Serving from York Co. North to Center Co. & Huntingdon East to Lebanon Co. and Anywhere Between.

Will Travel To Other Areas If Needed

\$ WHOLESALE \$

PIPE 1/2" to 8"

Prime, secondary, structure pipe
Farmers, Manufacturers, Fabrication
— Will Cut To Your Size Needs —

STEEL TUBING

1 1/2" Sq	3 1/2" Sq	2"x2" Sq	2"x4" Rect
2 1/2" Sq	4"x4" Sq	3"x3" Sq	3"x2" Rect

20' to 24' Lengths/1/8" to 1/2" Thick

BRICKER'S PIPE YARD

1970 Frank Road
Chambersburg, PA 17201

717-261-0095

Metal Roofs aren't Created Equal

Everlast II is better:

- it is galvanized heavier, like old times.
- it is heat formed, less paint cracks.
- is cut while hot, prevents early edge rust.
- won't scratch as easy, paint is harder.
- won't bend or buckle as easy, stronger design.
- laps are tighter, and virtually invisible.
- nails/screws seal better, ribs fit tighter to head.
- zinc phosphate, not chromate under paint.
- still priced about the same or less.

Everlast II

is excellent for houses and barns.
Double dipped galvanized is proven best for animals.
Standing seam is ideal for houses.

Martin's Roofing
Specializing in Custom Trim
717-532-3460
Off Exit 10 of I-81
Shippensburg, PA

COMFORTABLE



DURABLE

SOFSCAPE™ PAVERS
Softening the Globe "One Scrap Tire at a Time"

PRIME AREAS
STILL AVAILABLE

For Dealer/Distributor information contact:
Reifen Rubber Co.
199 W. Steigel St.
Manheim, PA 17545
Ph: 717-665-1428
Fax: 717-665-1430

APPEALING

Great For...

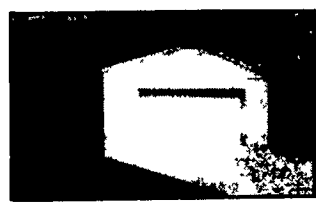
- Driveway
- Work Shops
- Pool Decks
- Walkways
- Garages
- Porches
- Patios

SAFE

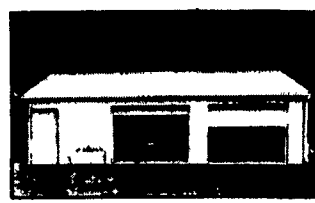


Compare the Savings...

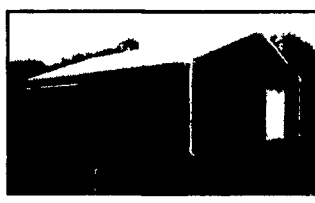
Special Values on Custom Pole Buildings!



24x24x8 \$5,500
-(1) 3'x6'8" six panel entry door
-(1) 16'x7' insulated raised panel overhead door



28X32x10 \$7,650
-(1) 3'x6'8" six panel entry door
-(2) 9'x8' insulated raised panel overhead doors



40X60x12 \$16,000
-(1) 3'x6'8" six panel entry door
-(1) 12'x10' overhead door
-(1) 12'x11' sliding door



50x96x14 \$27,200
-(1) 3'x6'8" six panel entry door
-(1) 20'x14' split sliding door

COMPARE OUR SAVINGS - OUR PRICES INCLUDE MATERIALS, LABOR, DELIVERY, APPLICABLE TAXES AND DESIGN PLANS. CALL TODAY - FREE ESTIMATES AND BROCHURES, WITH FINANCING AVAILABLE!

- Custom pole buildings - residential, agricultural, commercial, & equine
- Company-owned construction crews
- Maintenance-free painted steel with 25 year warranty - your choice of color on roof, sides, and trim!

Visit our web-site today!

www.conestogabuildings.com



CONESTOGA Buildings

202 Orlan Road, New Holland, PA 17557
1-800-544-9464