

# Chris Ransome



### CAT DOZERS

D3B	1985	Canopy, 50% U/C, 6-Way Blade	\$20,000
D3B	1986	Canopy, 35% U/C, 6-Way Blade	\$19,000
D3CIII	1994	Canopy, 30% U/C, 6-Way Blade	\$29,000
D4H	1987	Canopy, 50% U/C, 6-Way Blade	\$34,000
D4HXLIII	1993	Canopy w/Sweeps, 50% U/C, 6-Way Blade	\$50,000
D5C	1996	Canopy, 35% U/C	\$53,500

### CAT CRAWLER LOADERS

973	1988	Cab Panels, GP Bucket, 30% U/C	\$32,000
977L	1973	Cab, GP Bucket, 45% U/C	\$16,000

### CAT PAVERS

BG210B	1993	8'-13' Carlson Easy Screed II, Like New Cond.	\$69,000
BG225	1986	8'-16' Screed	\$26,500

### CAT EXCAVATORS

235C	1989	92,800 Lbs, 10'8" Stick, 36" Pads, 42" Bucket	\$49,900
312	1994	28,000 Lbs., 9'10" Stick, 24" Pads, 24" Bucket	\$56,000
320L	1996	44,910 Lbs., 9'7" Stick, 32" Pads, 54" Bucket	\$97,500
330BL	1997	75,000 Lbs., 12'10" Stick, 34" Pads, 48" Bucket	\$119,900

### CAT GENERATORS

75 KW	\$24,000
68 KW	\$15,000
113 KW	\$35,000

Many Other Choices Plus Other Used Diesel Engines

### OTHER BRANDS

Blaw Know	1997	8'-13'6" Screed	\$109,000
Posi Track HD 4520	1998	115 hp, 72" Bkt., 2800# Cap	\$39,900
Thomas Skid Steer	1986	GP Bkt, 75% Tires	\$6,500

Color Photos Available On Our Web Page [www.Ransome.com](http://www.Ransome.com)



**Tom Rosser**  
trosser@Ransome.com

**Darrin Hogeboom**  
dhogeboom@Ransome.com



**800-525-3135**

### FARM TRACTORS FOR SALE

JD 7800, 2WD, cab, power shift trans	\$34,500
JD 7400, 4WD, cab, power quad trans	\$33,200
JD 5510, 2WD, 400+ hrs	\$20,500
JD 6200, 2WD, synchro + trans	\$14,200
JD 2355, 2WD, 2700 hrs	\$13,200
JD 5410, 2WD, like new	\$19,800
JD 1830, 2WD, same as 2440	\$7,500

**(570) 966-1961**



Ford 2810 diesel, 960 org. hrs., ps, 8 spd, excellent	\$8,500
JD 855 4x4 hydro, new JD ldr., 72" belly mower, 135 hrs., same as new	\$14,000
Farmall M 1942, nice	\$2,400
Farmall Super MTA, exc, needs paint	\$4,300
Bush Hog 88" rototiller, used once	\$2,750
Loader for Farmall	\$650
Ford 1710 2wd w/6 ft. bellymower, ps, 3 pt. PTO, 850 hrs., like new	\$6,500
Kubota 2550 w/ldr., 1000 hrs., 4+4, Exc	\$12,750
Ford 3600 N w/cab, air, diesel, 8 sp, 3pt, PTO, nice	\$7,000
FNH 630 round baler, like new	\$7,500
FNH #38 flail chopper, nice	\$4,500
NH 256 hay rake, nice	\$1,850

Call Scott 908-782-7658

## Douglas EQUIPMENT & SUPPLY CO.



### EZ DUMPER TRAILERS & INSERTS IN STOCK

- 610DX, 9990 GVWR - \$3,695
- 610UDT, 9990 GVWR - \$3,295
- 610 DXLP, Low Pro, Dump/Skid Loader Trailer, 9990 GVWR, Red - \$3,995
- 6812 LP Dump/Skid Loader Trailer, Twin Dump Cylinders, 9990 GVWR, Red - \$4,995
- Pickup Inserts - \$1,895

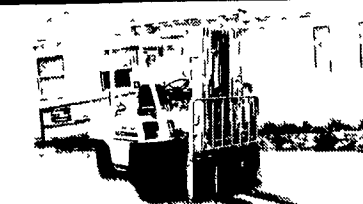
### TRAILERS

- '99 Custom 4T200ED Landscape Trailer w/22' Deck, Right Hand & Left Hand Mesh Ramp, Split Rear Landscape Ramp, GVWR 9975, New Demo - \$4,850

### SWEEPERS

- 1991 Elgin Pelican Series P, High Dump, AC, Dual Gutter Brooms, JD Turbo Diesel, Hydrostatic \$9,500
- (1) YBWB 3' York Broom, 5 HP, Gas Engine, Walk Behind
- Tenant 550 Scrubber, Articulated, Low Hrs., Like New

### FORKLIFTS



- 1989 Komatsu FD30, Diesel, Power Shift, Air Tires, Excellent Condition, 2,800 Original Hrs.
- Clark GPS251, Gas, 2 Spd. Power Shift
- Clark DPS251, Diesel, 2 Spd. Power Shift
- Clark C500Y60, Gas, 2 Spd. Power Shift
- Hyster H60H, LPG, Power Shift
- 1995 Lull 644B-37, JD Diesel, 6,000 Lbs., 37', 2,400 Hrs. \$39,500

### GRADERS

- Clark 301P, EROPS, GM Diesel, 4x4, 4 Wheel Steer
- JD 770B, EROPS, Power Shift, Front Sacrifier

### CHIPPERS

- 1998 Bandit 250 XP, 249 Hrs., JD Turbo Diesel, Auto Feed, Hyd. Shoot, Excellent Condition \$18,900

7100 Kreidler Rd.  
York, PA 17403  
Interstate 83 • Exit 3

**717/428-1517** or  
717/741-9000 residence  
717/840-6622 residence  
Fax 717/428-2990

### NEW TOWMASTER TRAILERS

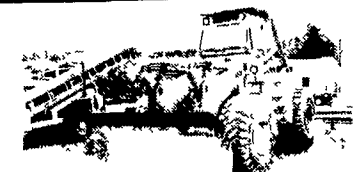
- 10,000 to 50,000 Lb. Capacity
- T-10DD, 9995 GVWR, Torflex Axles, Ramps, 16' Deck
- C-10P, 9995 GVWR, Ramps, 16' Deck
- C-10, 9995 GVWR, Torflex Axles, Ramps, 16' Deck
- T-10T, 9995 GVWR, Tilt, Torflex Axles, 16' Deck
- T-40, 20 Ton Tag-along
- T-50, 25 Ton Tag-along, 3 Axle

### GRADALLS



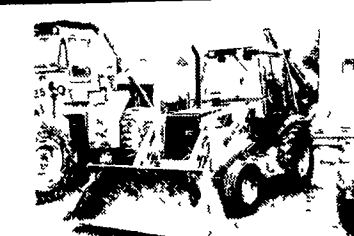
- 1989 Gradall G660E, Cummins Diesel Up & Down, Joy Stick, Excellent Condition
- Gradall G600, Detroit Diesel Up & Down

### LOADERS



- Clark 85 Wheel Loader, Art., GM Diesel, Good Tires
- Athey 7-12D Belt Loader, JD Diesel, Hydrostatic, 28' Belt

### BACKHOES



- 1994 Case 580 Super K, EROPS, 4 in 1 Bucket

## A Better WAY to Process HAY!

### The Reel Auggie® HAY MAXX® SYSTEM

is a better way to effectively process hay without adding stress to the mixer.

### KNIGHT HAY MAXX SYSTEM advantages...

- RATION QUALITY AND FLEXABILITY
- QUICK HAY PROCESSING
- LONGER PARTICLE LENGTH
- NO OVER PROCESSING
- MORE LEAVES, FEWER FINES
- LESS POWER REQUIRED
- LESS FRICTION AND WEAR
- BETTER RUMEN HEALTH



Call your local Knight Dealer for a demo!

**KNIGHT**

World-Wide Leader in TMR Mixers

Brodhead, WI • Phone 608-897-2131 • Fax 608-897-2561  
Greeley, CO • Phone 970-351-0444 • Fax 970-351-7499

[www.knightmfg.com](http://www.knightmfg.com)

### USED EQUIPMENT

- VD Lagoon Pump, Demo
- VD Slinger Spreader, 3300 gal tank
- 3 Pt Lagoon Pump, Rent or Sale
- 335 cu ft Lucknow portable w/scales
- 270 cu ft Steiner Stationary Mixer, Complete w/Electronic Scales, Good Cond
- 180 Oswalt Auger Mixer, Good Cond
- Knight 2250 Portable 216 Cu Ft Good Cond.
- Knight 3170 Mixer w/Electronic Scales, Like New
- Rissler 190 Cu Ft
- Demo Unit Mixer In Stock Call For A FREE Demonstration

## MILLCREEK FENCE & FARM SYSTEMS

2285 Old Philadelphia Pike  
Lancaster, PA 17602  
(717) 396-8987