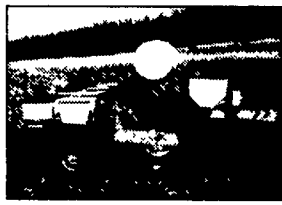


IN STOCK & READY



WAS \$7,500, IS \$6,500
B 17155 Krause 4927A 27'
 Rockflex Disc, 13' 2' Transport, 9
 1/8" Spacing, Dual 9 5L x 15 Tires



WAS \$4,800, IS \$3,950
C 30732 New Idea 9000 4 Row Wide
 Corn Planter, No-Til Coulters, Liquid
 Fertilizer, Dickey-John Monitor



WAS \$2,100, IS \$1,800
A 22535 IH 510 Drill, 24 x 6, 13
 1/2" Double Disc Openers



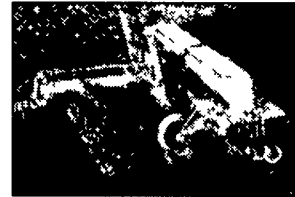
WAS \$4,500, IS \$4,300
A 22813 CIH 5100 18 x 7 Grain
 Drill, 3" Press Wheels, Double Disc
 Openers, Hydraulic Cylinder & Hoses



WAS \$6,500, IS \$5,900
B 17476 IH 145 Rollover Plow,
 4 Furrow x 18", Spring Trp



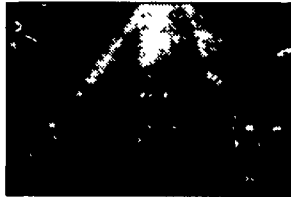
WAS \$8,500, IS \$8,000
A 22955 DMI Tiger II 5 Shank
 Subsoiler, Auto-Reset,
 12' Working Width



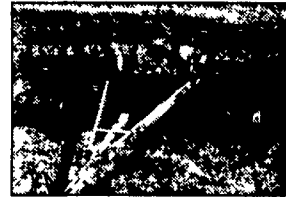
WAS \$18,900, IS \$16,900
B 22583 Great Plains 15' NT Drill,
 2556 Acres



WAS \$7,500, IS \$6,900
B 22782 JD 8300 21 x 7
 Conventional Drill, Double Disc
 Openers, 2 Row Track Eliminator,
 Cylinder & Hoses



WAS \$5,800, IS \$5,500
B 18067 UM 20' Perfecta 2 Harrow,
 Heavy Duty S-Tines, 4" Teeth,
 Hydraulic Fold w/Baskets,
 Excellent Condition



WAS \$4,500, IS \$3,500
B 17191 UM 27' Rolling Basket



WAS \$7,500, IS \$6,900
B 18669 1994 JD 7240 8RN Planter,
 9" Front and Rear Spacing,
 Scrapers, Duals on Center



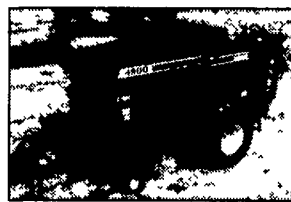
WAS \$4,900, IS \$3,900
A 22811 Miller 12' Offset Disc,
 Standard Gangs, Duals on Center,
 Hydraulics, Blades - 23" Notched
 Front, 19 1/2" Rear



WAS \$2,900, IS \$2,000
B 17467 Magee PT 232 Cultivator



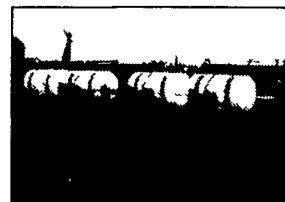
WAS \$41,800, IS \$36,500
A 16564 1994 CIH 8580 Baler,
 27,780 Bales



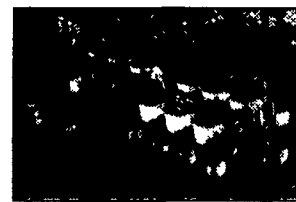
WAS \$38,500, IS \$34,500
A 22444 Hesston 4900 Baler,
 26,000 Bales



WAS \$5,400, IS \$4,900
B 18829 IH 475 18' Disc,
 7 1/2" Spacing, 21" Blades,
 Packer Hitch & Hoses



WAS \$18,500, IS \$17,700
B 16778 JD 7240 8RN Planter,
 30" Row Spacing, Liquid Fertilizer,
 Big Seed Boxes



WAS \$17,500, IS \$16,900
B 18740 Kinze 8RN Planter, 30"
 Row Spacing with Splitters, Liquid
 Insecticide, Markers



WAS \$8,450, IS \$7,500
C 22296 JD 1470 12' Disc Mower
 Conditioner, Rubber Rolls, End-Pull



WAS \$15,900, IS \$15,000
A 22880 1997 NH 1431 12'
 Mower Conditioner, Hydro-Swing



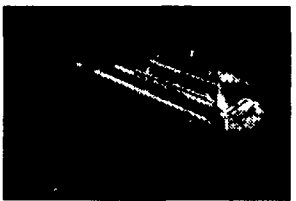
WAS \$21,000, IS \$19,500
B 18138 CIH 8315 15' Disc Mower
 Conditioner, Demo Unit



WAS \$21,000, IS \$19,500
A 22649 1998 Great Plains 15' NT
 Drill w/Center Pivot Hitch,
 Only 341 Acres



CALL FOR SPECIAL PRICE
B 16796 CIH 3950 25' 9" Disc,
 Rigid Bearing



WAS \$5,900, IS \$5,500
C 18847 NH 499 Mower
 Conditioner

USED TILLAGE

- B 19502 BR 16' N Packer
- B 19428 BR 25' CF Packer
- B 19359 DMI Crumbler
- B 18868 DMI 3 Arm Subsoiler
- B 18505 DMI 5 Shank Subsoiler
- A 22955 DMI 5 Shank Tiger II Subsoiler
- A 23032 DMI 7 Shank Subsoiler
- B 22866 DMI 7 Shank 730 Ecolo-Tiger
- B 19130 FR 10 12 Chisel Plow
- A 22879 SF 4212 11 Chisel Plow
- B 19355 BR 8RN Cultivator
- A 23010 IH 183 Cultivator
- B 19102 JD 1010 18' Cultivator
- A 22878 KW 270 18' Cultivator
- B 18068 MF 18' Cultivator
- B 17467 MG PT-2 32' Cultivator
- B 18067 UM 20' Cultivator
- A 22641 KR 6318A Landstar
- B 17315 KR 3131 31' Landsman
- B 22431 KR 6331 Landstar
- B 17463 KR 6331 31' Landsman
- B 18870 CIH 720 6 x 180L Plow
- B 17476 IH 145 4 x 18 Plow
- B 17477 IH 145 4 x 18 Plow
- B 17038 IH 710 Plow 6 x 16 IF
- C 31151 JD 2500 Plow 5 x 18
- B 19191 BR X108 21' Packer
- B 18730 UM 23' Basket
- B 19303 UM 24' Basket
- B 22957 UM 25' Basket
- B 17191 UM 27' Basket
- B 17326 UM 29' Basket

We Have The Following Combine Models Available:

- CIH 1640, 1660, 1666, 1680, 1688, 2166, 2188, 2388
- IH 1420, 1440, 1460, 1480, 715, 915
- JD 6620, 7700, 7720, 9500, 9600

USED PLANTERS & DRILLS

- B 19390 GP 15' Drill w/CPH
- A 22813 CIH 5100 18 x 7 Drill
- A 23029 GP 24' Drill
- A 22649 GP 15' NT Drill
- A 22960 GP 30' NT Drill
- B 16662 GP 15' Drill
- B 22583 GP 15' NT Drill
- B 18365 GP 24' NT Drill
- B 18940 GP 30' Conv Drill
- A 22535 IH 510 24 x 6 Drill
- B 17790 IH 800 6RN Planter
- A 23011 IH 800 4RN Planter
- B 19196 JD 30 Drill
- B 19386 JD 750 Drill
- A 22997 JD 750 15' Drill
- A 22883 JD 8350 12' Drill
- B 22782 JD 8300 21 x 7 Drill
- C 18032 JD 7000 6RN Planter
- B 16778 JD 7240 8R Planter
- B 18740 Knz 8RN Planter
- C 30732 NI 9000 4RW Planter
- B 30373 WH 5400 6RN Planter

USED DISCS

- A 23093 KR 2416
- B 19354 MF 820 23'
- B 19435 KR 4918 27'
- B 19610 KR 4942WR 22.5
- B 22888 BH 1445 18'
- B 18777 CIH 496 19'
- B 18982 CIH 496 24'
- B 16907 IH 770 13'
- B 18829 IH 475 18'
- B 18976 IH 496 31'
- B 19360 JD 210 15'
- C 31217 JD 230 21'
- B 18669 JD 630 21'
- B 18970 KR 4907 25'
- B 17155 KR 4927A 27'
- A 22811 MI 12 Offset
- B 16620 ML 28'

USED HAY & FORAGE

- A 23053 CIH 8312 Mower Cond
- A 23035 NH 415 Mower Cond
- A 23022 NH 1495 Windrower
- A 22902 5 Rotary Mower
- A 16564 CIH 8580 Baler
- A 22444 Hstn 4900 Big Baler
- C 22296 JD 1470-12 Mower Cond
- A 22880 NH 1431-12 Mower Cond
- A 22723 RH S220-20 Batwing Mower
- C 18621 CIH 600 Blower
- B 18906 CIH 8580 Big Baler
- B 17722 CIH 1490 12' Mwr Cond
- B 18138 CIH 8315 Mower Cond
- C 18847 NH 499 Mower Cond
- C 31014 CIH 8420 Rnd Baler
- C 31177 IH 435 Baler w/thrwr

JUST TRADED

- NEW TRACTORS TO THE HYDRO-CUTTING STORE!**
- 23011 NH 1431 Mower Cond
 - 23112 GP 13' EMD Conv Drill
 - 23101 Rnks 140CS Sander
 - 23104 Mlr 10' Disc
 - 23092 MF 520 12' Disc
 - 23093 KR 2416 Disc
 - 23096 JD 4030 2WD Cab Tractor
 - 23097 IH 1068 2WD ROPS Tractor
 - 23087 CIH 5240 MFD Cab Tractor
 - 23068 CIH 1660 Combine
 - 23069 CIH 5250 2WD Cab Tractor w/lr
 - 23070 JD 4850 4WD Tractor
 - 23075 DMI 4 Shank Subsoiler
 - 23077 CIH MX 180 MFD Tractor
 - 23078 IH 475 18' Disc
 - 23062 CIH 2188 Combine

USED MISCELLANEOUS

- A 23034 Rnk 60" Arm Mower
- A 23025 Rhino 84" Mower
- A 23027 BH 2620 20' Mower
- A 23017 FMC 130 HD Sprayer
- A 22959 60 Fork Bucket
- A 22778 CIH 710 Loader
- A 22799 CIH 72 Bucket
- A 22938 CIH L700 Loader
- B 17109 CIH 1840 Skidsteer
- B 18260 FD 776B Loader
- B 18931 HR Baby Ditcher
- B V7976 HY V24A Lft Truck
- B 18886 KN 3450 Mixer
- C 17801 CIH 1840 Skidsteer
- C 31165 CIH 1840 Rops Skdstr

JUST TRADED

- NEW TRACTORS TO THE HYDRO-CUTTING STORE!**
- 19706 CIH 6004
 - 18710 BR 24' dth
 - 19711 TW 20' dth
 - 19694 KR 4915A
 - 19685 Shultz 5026
 - 19636 DMI 530 S
 - 19638 JD 8650 1
 - 19580 CIH 7120M
 - 19581 CIH 7120M
 - 19582 CIH 7120-2
 - 19583 CIH 7120-2
 - 19584 CIH 7140M
 - 19585 CIH 7140M
 - 19586 CIH 7140M
 - 19587 JD 4580-2
 - 19589 JD 4560-2
 - 19590 JD 8400-4
 - 19596 Hstn 1340-1
 - 19599 Frml 4600 1
 - 19607 CIH 5140-2
 - 19610 KR 4942W
 - 19510 ST ST310

WE ARE L... AN EXP... SERVICE

- We Offer A Competitive B...
- 401K Package
 - Profit Sharrng

FARM MACHINERY RUNS BETTER WITH H



Authorized UPS Station

All New & Used Products Backed
 By Hooper Parts & Service
 VISIT OUR WEBSITE: www.hooper.com