

**NH 1495**  
Self-Propelled Haybine, Planetary Drive, Gas Motor, Good Looking Machine  
**\$4,500 OBO**  
717-369-2598

Case 2090 tractor, MFWD, 116hp, CAH, 2750 hrs, recent over-haul, dual 18 4x38, 3 outlets, fantastic cond, everything works, none better  
**\$18,000 OBO**

MF 1130, 120hp, dual 18 4x34, CAH, 1200 hrs on eng, trans & rear rebuilt, automotive paint, sharp, well maintained tractor  
**\$9,000 OBO**

JD 725 quick-attach loader, only on tractor 600 hrs, new 1998, fits 30, 40, 50 or 55 series JD tractor  
**\$6,250 OBO**

**410-822-7578**  
after 6pm

**NEW EQUIPMENT AT '99 PRICES**  
Competitive Financing Available



C-IH CX80 Tractor, 67 HP, MFD, Platform, ROPS  
C-IH 6650 Soil Controller, 7 Shank Spring Reset  
C-IH 3850 Disk Harrow, 18 Cushion Gang  
C-IH 8420 Round Baler, 36 x54

**A. L. HERR & BRO.**  
Established 1890

Park Ave.  
Quarryville, PA 17566  
**(717) 786-3521**  
WE SHIP PARTS UPS

**CASE III**

Visit us on the Internet at <http://www.casecorp.com>

**HONDA ENGINES**



Keeping it going smooth and quiet

**APRIL SPECIALS**

5 HP GX160 Light Duty Recoil	\$210
2.5 HP GX100 Recoil	\$239
1.1 HP GX120 Recoil	\$285
5.5 HP GX160 Recoil	\$299
6.5 HP GX200 Recoil	\$345
9 HP GX200 Recoil	\$490
11 HP GX340 Recoil	\$560
13 HP GX390 Recoil	\$580
18 HP GX610 Recoil Tank Muffler	\$1135
20 HP GX200 Elec Start Tank or Fuel Pump	\$1295
24 HP GX670 Complete	\$1395
5.5 HP GX160 Elec Start	\$435
9 HP GX270 Elec Start	\$615
11 HP GX340 Elec Start	\$675
13 HP GX390 Elec Start	\$695

Add For Shipping on Motors  
2.5 hp to 9 hp - \$10.00  
11 hp to 13 hp - \$25.00  
18 hp to 20 hp - \$45.00  
Send Check With Order

6 To 1 Clutch Reduction  
540 RPM \$895

All Units Have Oil Alerts  
Except 2.5 & 5.0 HP

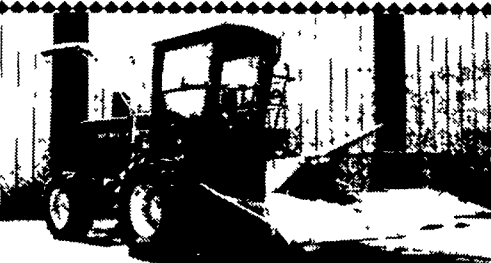
**Blue Mt. Small Engine Service**

1490 Three Sq Hollow Rd  
Newburg PA 17240  
717-423-5358



JD 4440, quad, hyd. front wheel asst.  
**\$16,500**

717/484-2233



JD 6810 chopper 10 hrs. ... \$72,000

2-JD 5830 2-JD 5730

2-JD 5820 2-JD 5720

Starting at \$15,000

Claas & Kemper heads & grass heads on hand

NEW Rotary screen assembly \$2,000 ea

Kernel processors & 2 parts machines on hand

Special NH 1895, 4WD w/heads, field ready. .... \$14,000

Special Purchase: 50 NEW 2 cyl Deutz Rutterini 20hp dsl engines..... \$1,500 each

New parts kits for JD & Detroit engines & used parts

**Reiff Diesel 717-445-9907 or 9507**  
152 Reading Rd., East Earl, PA 17519

**Best Buys In Used Equipment**

**DEMO EQUIPMENT DEALS—CALL**

Case IH 365 S-tine field cultivator 19'8"  
Case IH 9330 Steiger tractor 3 pt PTO row crop  
Case IH 9350 Steiger tractor 3 pt PTO, row crop  
Case IH 2366 combine with 1020 20 grain head, 2WD, demo, 168 hrs  
Case IH 5800 chisel plow, 13'  
Case IH 1830 6R 30' cultivator  
Kinze 2000 6R 30' corn planter

**USED TRACTORS**

Case IH 5130, 4WD, cab, 1300 hrs  
Case IH CX80 platform 4WD 135 hrs  
Case IH 9230 Steiger tractor 3 pt. row crop steering, 1,600 hrs  
JD 4020  
JD 950 w/loader, 4WD, 600 hrs  
Kubota L245HC oil set  
Kubota M5400, 4WD w/LA1001 Loader  
Kubota B7100HSD 4WD, hydro, 314 hrs  
Farmall Super AV w/belly mower  
Ford 1600 2WD turf tires

**COMBINES & HEADS**

IH 863 Corn Head, 6R, 30'  
Case IH 1640 combine, w/1020 grain head, 15', 1850 hrs  
(2) Case IH 1640 combine w/1020 grain head, 17-1/2'  
Gleaner L combine w/6R 30" corn head 15' grain header

**LAWN & GARDEN**

Cub Cadet 2135 w/38" deck & bagger  
Cub Cadet 2185 w/46" mower deck & bagger  
Cub Cadet 1860 w/46" mower deck & bagger  
Cub Cadet 1320 w/46" mower deck & bagger  
JD tiller fits on JD 110, 112 tractor  
Toro 318 w/37" deck & rotary tiller

**IRRIGATION EQUIPMENT**

Bauer Rain Star 90-280TX hard hose  
Bauer Rain Star 125-390H SOLD 280' turbine, hyd stabilizer & sled  
Bauer Rainstar 125 360T reel traveler turbine drive 4"x1016'  
JD 6466T power unit, 200 HP

**MISCELLANEOUS**

IH 420 plow 3b x 16  
NH 492 haybine  
NI 5209 discbine  
Oliver plow 5x16  
Multi **SOLD** pinch cultivator, 5R  
KMC 6R Spinach Cultivator  
2R **SOLD** Transplanters  
Alamo sickle bar mowers  
IH rake  
Brillion 12 chisel plow pull behind  
Howard **SOLD** V-ripper  
IH 720 7b/16 onland plow  
Triaxle 18 ton deckover trailer  
Cub I bot plow for fast hitch  
Case IH 568 seed bed conditioner, 4R

**Farm-Rite inc.**

Agricultural Equipment, Supplies & Services  
<http://www.farm-rite.com>

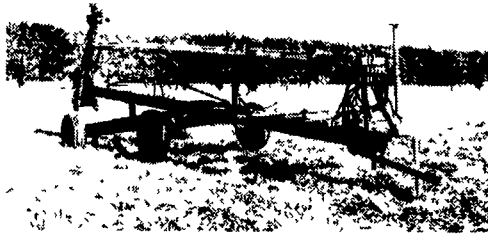
122 Old Cohansey Rd. 109 E., Avenue  
Shiloh, NJ 08353 Woodstown, NJ 08098  
**1-800-752-6373 1-800-848-5051**

Visit us on the Internet at <http://www.casecorp.com>  
Case IH is a registered trademark of Case Corporation

**CASE III**

**DRY HILL**

Manure Pumps



• Lagoon & Vertical Pumps  
Call for Best Price!  
- Now Available at -

Sales & Service

**ROVENDALE AG & BARN EQUIP.**

WATSONTOWN, PA 17777

570-538-9564 OR 570-742-4226

Exit 31, I-80 to I-180 Watsonstown Exit

Hours: Mon.-Fri. 8 to 5: Sat. 8 to 12



TANCO 580S  
BALE WRAPPER  
with Vertical Unload  
List Price \$15,800

ONE ONLY  
DEAL  
**\$12,800**

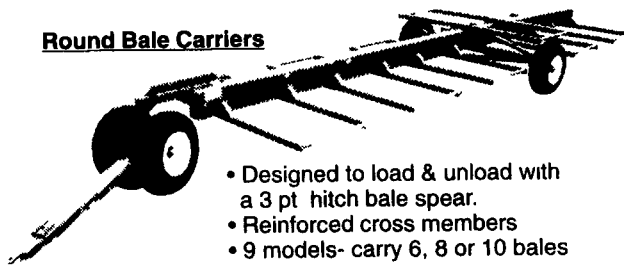
**LENOX FARM SUPPLY**

570-289-4349

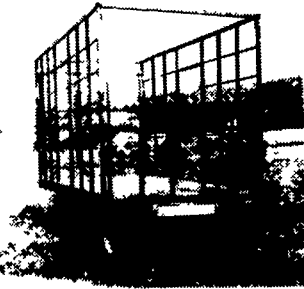
FAX 570-289-4886

**Bring In Your Hay Crop With WellBuilt™ Equipment**

**Round Bale Carriers**



- Designed to load & unload with a 3 pt hitch bale spear.
- Reinforced cross members
- 9 models- carry 6, 8 or 10 bales
- Heavy duty construction.



**Rack Wagons**

- Reinforced rack.
- Quick latches on rear & side gates
- Rear gate swings 270°.
- Oak flooring.
- John Deere green.

**Feeders**

- Available in a variety of lengths
- Adjustable slant bar or self-locking head locks.



Gates • Slant bar Sections • Head locks • Gutter grates

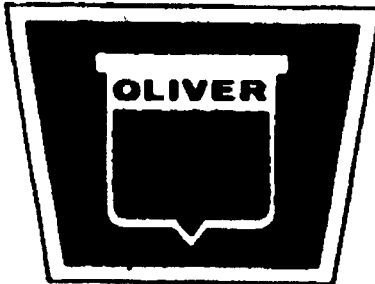
**STOLTZEUS**

For a free brochure or more information call 610/273-3603

540 White School Rd  
Honey Brook, PA 19344  
610/273-3603 - Leave Message

156 Pompey Hill Rd  
Stoystown, PA 15563  
814/893-5086

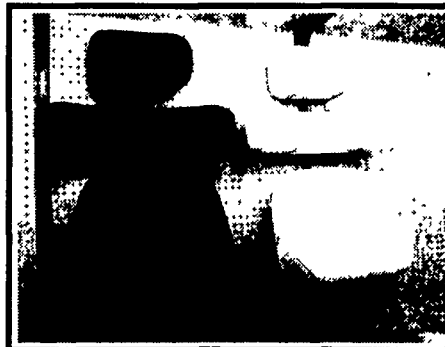
**DEALER INQUIRIES INVITED • CUSTOM WAGONS A SPECIALTY**



**OLIVER TRACTOR PARTS**  
**NEW or USED**

We Are Your Better Source For Oliver Tractor Parts  
**NOW IN STOCK - 300 OLIVER TRACTORS DISMANTLED**  
with The Parts, Cleaned, Inspected, And Ready  
To Ship The Same Day You Order

**Try Us- We Can Get You Going**  
**We Will Ship You The Correct Part**  
**The First Time**



**NOW IN STOCK**  
Replacement Seat Bottoms and Backs with Steel Backing for Oliver "50" & "55" Series Tractors and Early White Tractors  
**WHITE or RED COLOR**

**STORE HOURS: Mon. Thru Fri. 8 AM - 5 PM; Sat. 8 AM - 12 Noon**  
**\*717-354-2150 \*Fax 717-355-9909**

**FARMERSVILLE EQUIPMENT**

- INC. -



142 East Farmersville Road  
PO Box 638, Ephrata, PA 17522-0638  
Located In Village of Farmersville, Lancaster County

