

VIRGINIA CATTLE & HOGS

Virginia Livestock Auctions

Richmond, VA
Mon Apr 17, 2000
USDA-VA Dept of Ag Market News
Summary of Northern Virginia Live-
stock Auctions

Fredericksburg, Front Royal, Rock-
ingham, Shenandoah, Staunton Union
and Winchester Virginia for the week of
Apr 10-15, 2000

Feeder Cattle 2088 Head
Steers Med&Lge 1 Small 1 Med&Lge
2 200-300 115.00- 132.50 — 111.00
300-400 108.00- 126.00 94.00 91.00 -
107.00 Mostly 100.00-115.50 —
400-500 102.50 - 117.50 — 98.00 -
112.00 Few 95.00 - 103.00 — Mostly
90.00 - 94.00 500-600 94.50 - 110.00
74.00 - 83.00 85.00 - 99.00 600-700 85.50
- 100.00 80.50 82.00 - 91.50 700-800
79.00 - 90.00 66.00 - 72.00 72.25 - 82.00
800-900 80.50 - 81.00 — 73.50 - 77.00
900-1000 74.50 - 75.50 — 68.50 -
69.00 1000-1100 — 64.00

Holstein Steer Med&Lge 2 200-300
89.00 300-500 77.50 - 82.50 500-700
65.00 - 74.00 700-900 56.50 - 61.00

Heifers Med&Lge 1 Small 1 Med&Lge
2 200-300 103.50- 114.00 — 84.00 -
94.00 300-400 99.00 - 112.00 70.50 -
80.00 83.00 - 100.00 400-500 87.50 -
104.00 70.00 - 79.00 75.50 - 97.00 500-
600 80.00 - 95.00 65.00 - 71.00 77.00 -

90.00 600-700 78.00 - 87.25 70.00 - 73.00
70.00 - 81.00 700-800 75.00 - 78.50 —
73.00 800-900 70.00 —

Bulls Med&Lge 1 Small 1 Med&Lge 2
200-300 107.00- 125.00 81.00 88.00 -
96.00 300-400 100.00- 124.00 — 84.00
- 97.00 Mostly 105.00- 116.00 —
400-500 99.00 - 114.00 80.00 -
81.50 88.00 - 102.00 500-600 86.00 -
103.00 70.00 81.00 - 88.00 600-700 81.00
- 89.00 73.50 - 75.00 73.00 - 81.00 700-
900 66.50 - 83.50 — 59.00 - 72.25

Slaughter Cattle 301 Head
Slaughter Cows 259 Head Breaking
Utility and Commercial 2-4 35.00 - 43.50
Cutter and Boning Utility 1-3 33.00 -
41.50 Canner and Low Cutter 1-2 28.50 -
37.50

Slaughter Bulls 42 Head Yg 1-2 900-
1300 lbs 45.50 - 55.50 Yg 1-2 1300-1600
lbs 44.75 - 52.75 Yg 1-2 1600 lbs and over
44.25 - 55.25

Cows returned to farms 83 head -
Medium 1 and Large 1 Few 2's, 4-10 yrs
old 900-1225 lbs bred 5 months 300.00-
550.00 per head.

Medium 1, Small 1 Few 2's, 6 yrs to
aged 700-1100 lbs bred 3-7 months
425.00-585.00 per head.

Cows with calves at side 55 pairs -
Medium 1 and Large 1, 3-6 yrs old 900-
1250 lbs with calves 150-375 lbs 700.00-
940.00 per pair. Medium 1 and Large 1
Few 2's, 6-10 yrs old 900-1125 lbs with
calves 100-300 lbs 520.00-680.00 per
pair.

Medium 1 and Large 1 Few 2's 6-12
yrs old 800-1175 lbs with calves baby to
350 lbs 570.00-850.00 per pair. Large 1,
with calves 100-200 lbs 575.00-700.00
per pair. Baby calves returned to farms
39 head newborn to 4 weeks 21.00-
115.00 per head. Over 100 lbs 65.00-
167.50 per cwt.

Lambs Total Receipts 310 Head
Slaughter Lambs 122 Head New Crop
Choice Few Prime 1-2 Few 3 95-120 lbs
85.75 - 91.75 Good and Few Choice 1-2
86-90 lbs 87.50 - 87.75 Woolled Good and
Few Choice 1-2 106 lbs 63.00 Feeder
Lambs 100 Head Medium and Large
Frame 1-2 70-85 lbs 82.00 - 99.50
Medium and Large Frame 1-2 60-70 lbs
101.00 Medium and Large Frame 1-2 50-
60 lbs 90.00 - 107.00 Small Frame 1-2 81
lbs 90.00 Small Frame 1-2 60-70 lbs
102.25 Slaughter Ewes and Rams 88
Head Ewes Choice 2-4 25.00 - 27.00 Utility
and Good 1-3 23.25 - 33.50 Cull and
Low Utility 1-2 22.50 - 32.00

Slaughter Hogs 70 head Barrows and
Gilts US 1-3 200-250 lbs 43.00.

Warrenton, VA
Fri Apr 14, 2000

USDA-VA Dept of Ag Market News
Lynchburg State Graded Feeder
Cattle Sale
Sale date: Apr 13, 2000. Weighted Av-
erage.

Receipts: 767 (Board Steers 78; Steers
362; Heifers 327)

Feeder Steers Medium and Large 1
Head Wt Range Avg Wt Price Range
Avg Price 18 400-500 455 119.00 119.00
144 500-600 563 99.25-100.50 99.70 59
600-700 643 91.50-93.25 93.01 40 700-
800 742 85.25-87.25 85.44 20 800-900
839 78.75-79.75 79.50

Feeder Steers Medium and Large 2
Head Wt Range Avg Wt Price Range

Avg Price 11 300-400 362 119.00 119.00
9 400-500 460 113.00 113.00 25 500-600
548 99.75 99.75 25 600-700 642 92.00
92.00 23 700-800 744 85.75-86.00 85.97

Feeder Steers Medium and Large 3
Head Wt Range Avg Wt Price Range
Avg Price 7 500-600 560 87.50 87.50

Feeder Steers Small 1 Head Wt Range
Avg Wt Price Range Avg Price 13 400-
500 455 106.00 106.00 7 500-600 538
93.50 93.50 11 600-700 640 85.25 85.25

Feeder Heifers Medium and Large 1
Head Wt Range Avg Wt Price Range
Avg Price 22 400-500 466 96.00-97.25
97.08 35 500-600 550 90.25-90.75 90.68
41 600-700 647 80.75-82.25 82.03 25 700-
800 748 76.50-77.50 77.38 9 800-900 857
70.00 70.00

Feeder Heifers Medium and Large 2
Head Wt Range Avg Wt Price Range
Avg Price 10 300-400 346 105.50 105.50
17 400-500 465 92.00-97.00 96.43 47 500-
600 554 89.25-89.50 89.46 32 600-700
644 81.00-81.25 81.03 22 700-800 740
78.75 78.75 8 800-900 837 69.50 69.50

Feeder Heifers Small 1 Head Wt
Range Avg Wt Price Range Avg Price 9
400-500 461 94.50 94.50 23 500-600 546
82.75 82.75 5 600-700 625 74.00 74.00

Warrenton, VA
Thu Apr 13, 2000

USDA-VA Dept of Ag Market News
Dublin State Graded Feeder Steer
Sale

Sale date: Apr 12, 2000. Weighted Av-
erage.

Receipts: 985 (Steers 985)

Feeder Steers Medium and Large 1
Head Wt Range Avg Wt Price Range
Avg Price 11 400-500 459 112.50-117.00
116.17 70 500-600 567 106.00-111.00
109.39 120 600-700 655 91.00-95.75
93.23 157 700-800 746 84.75-85.50 85.08
116 800-900 849 80.00-80.50 80.30 57
900-1000 943 76.75-78.25 77.63 13 1000-
1100 1047 71.50-71.75 71.62

Feeder Steers Medium and Large 2
Head Wt Range Avg Wt Price Range
Avg Price 9 300-400 366 123.00 123.00
28 400-500 460 108.50-112.00 111.49 80
500-600 554 95.25-102.25 100.58 88 600-
700 653 90.00-92.00 91.56 38 700-800
742 84.75-87.00 85.40 13 800-900 839
78.75-79.50 78.92 7 900-1000 942 68.00-
72.00 69.71

Feeder Steers Medium and Large 3
Head Wt Range Avg Wt Price Range
Avg Price 10 400-500 433 89.00 89.00 15

500-600 564 89.50 89.50
Feeder Steers Small 1 Head Wt Range
Avg Wt Price Range Avg Price 6 300-400
363 109.00 109.00 37 400-500 463
106.25-110.00 108.40 37 500-600 561
92.25-94.25 93.87 29 600-700 643 85.00-
87.75 87.46 9 700-800 771 77.00-80.50
79.70.

Aberdeen Livestock

Churchville, Md.

Report Supplied by Auction
Wednesday, April 19, 2000

SLAUGHTER STEERS: STEADY.
CHOICE 2-4 1100-1400 LBS. 72.00-
75.50; SELECT AND LOW CHOICE
1000-1500 LBS. 69.00-73.00; HOL-
STEIN STEERS III CHOICE AND
PRIME 1250-1400 LBS. 66.50-68.50;
CHOICE 1200-1500 LBS. 65.00-66.50;
SELECT ALL WEIGHTS 54.00-59.00.
SLAUGHTER HEIFERS: STEADY.
CHOICE AND PRIME 950-1300 LBS.
71.00-74.00; SELECT ALL WEIGHTS
900-1400 LBS. 64.00-70.00.

COWS: 1.00 HIGHER. BRK. UT
AND COMM 2-4 BULK 39.00-43.00; HI
DRESSING 44.00-47.00; CUTTER
AND BONING UT. 37.00-40.00; HI
DRESSING 41.00-43.00; CANNERS
AND CUTTERS 32.00-39.00; LOW
DRESSING 30.00 DOWN.

BULLS: 1.00 HIGHER. ALL
WEIGHTS 1100-1900 LBS. 48.00-59.00.
VEAL CALVES: STEADY.
CHOICE AND PRIME 200-400 LBS.
LBS. 76.00-85.00; HI GOOD AND
LOW CHOICE ALL WEIGHTS 68.00-
74.00.

FARM CALVES: 20.00 HIGHER.
HOL. BULLS 100-125 LBS. 170.00-
215.00; HOL BULLS 85-95 LBS.
130.00-194.00; HOL. HEIFER
CALVES 100-120 LBS. 270.00-340.00;
SMALL FRAME 70-105 LBS. 145.00-
190.00; SLAUGHTER CALVES ALL
WEIGHTS 25.00-40.00.

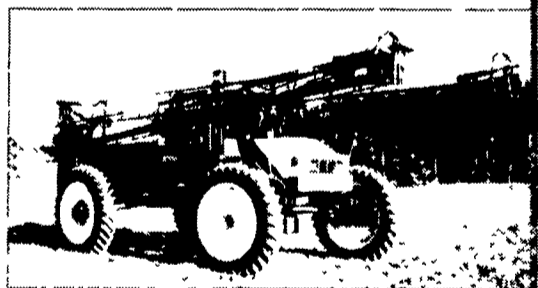
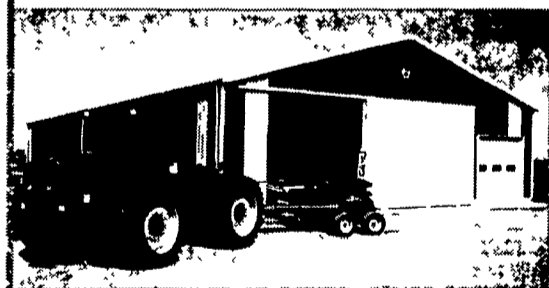
FEEDER CATTLE: STEADY.
BULLS AND STEERS 400-900 LBS.
49.00-105.00; HEIFERS 300-700 LBS.
57.00-93.00.

LAMBS: STEADY. CHOICE AND
PRIME 90-110 LBS. 85.00-94.00;
LIGHTER LAMBS 110.00-170.00;
HEAVY EWES 27.00-33.00; LIGHT
EWES 35.00-52.00.



Crop concerns? Consider Lease Financing

for agricultural buildings, equipment and vehicles



- Low upfront costs
- 100% tax deductible payments
- Guaranteed "True Tax" or fixed purchase option leases available
- Fixed, customized payment schedules
- Personalized, on-site service from:

Ken Darlington PA, NJ, MD, VA, WV 610-793-0150	Michele Bogucki PA, NJ, MD, VA, WV 717-244-3665	Sue Beshore PA, NJ, MD, VA, WV 717-932-1715	Andrew McLean Delmarva 410-827-5052	Elizabeth Anderson Delmarva 410-651-4128
Mike Dixon Central PA, West MD 814-684-5707	Mike Fullam Central PA 570-966-9202	Brenda Pflieger Central PA 570-522-0505	Joe Polite Northwest PA 724-981-1324	Lisa Sonnen Northeast PA, North NJ 717-866-9217
			Doug Snee Southwest PA, WV 724-627-5941	

TELMARK
www.telmark.com
800-451-3322

DISTRIBUTORS FOR: SILO QUEEN



- 502 - 109 Day
- 2400 - 110 Day
- 2525 - 117 Day
- GL25R9 Round-Up Ready
- other Greenland Varieties Available

WHOLESALE & RETAIL

BOYDELL FARMS
302 Iona Road, Lebanon, PA 17042
Phone: 717-272-8943

SOYBEANS

Boydell Farms #3500
(2nd Place BACS Trials)
The All New Roundup Ready 2835 &
3655 • Also Resnick and Flyers

WINTER KING ALFALFA

2nd of 72 Entries
Penn State Trials
1995-1999

83% Multi-Leaf Expressions
Also: • Vernal • 94 MPR
• Premium Blend

SEED OATS

Ogle, Noble, Armor

- Fertilizers • Chemicals
- Lawn Seeds
- Full Line of Ag Seeds
- Baler Twine • Plastic Wrap

McElwee's Livestock

Home of Shippensburg Cownet
3 Locations To Serve You

Newburg

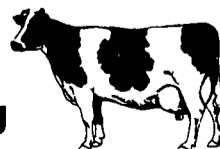
Mon. 9-4, Thurs. 9-2
(717) 423-6869

Woodsboro, MD

Tues. 10-2
(301) 845-6232

Chambersburg

Wed. 9-3
(717) 267-3321



Receiving All Cows, Bulls, Steers, Calves
Call For Daily Price Quotes