

# Get Money And Protect The Environment When You Recycle Gas-Powered Lawn Equipment

**HARRISBURG** (Dauphin Co.) - For the third consecutive year, the Pennsylvania Department of Environment Protection (DEP) is partnering with PPL Electric Utilities Corporation to help eliminate gas-guzzling lawn equipment, according to DEP Secretary James M. Seif.

Pennsylvanians who retire their old lawn equipment will receive rebates to be used toward the purchase of more environmentally-friendly electric-powered mowers and lawn tools. "This rebate program has two main goals - to improve air quality and to encourage 'green' consumer choices," said Seif, who retired his gas-powered lawn mower two years ago. "When each of us does our fair share, no matter how small, it all adds up to a cleaner environment for everyone."

The 2000 Clean Mower Rebate Program will be held 8 a.m.-1 p.m., May 6 at PPL's Lancaster Service Center, 651 Delp Road, Lancaster, and PPL's Lehigh Service Center, 827 Hausman Road, Allentown.

To participate, turn in a gasoline-powered lawn mower on May 6, and you will receive a coupon good for a \$75 rebate on the purchase of a new, electric-powered lawn mower. People who turn in a gas-powered weed trimmer, edger, leaf-blower or chain saw will receive a \$20 rebate toward the purchase of an electric-powered tool.

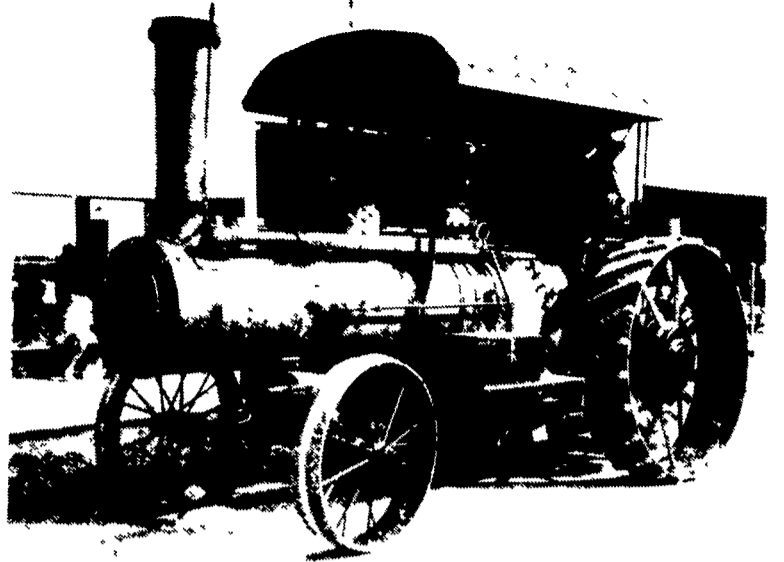
PPL employees will drain the oil and gas from the mowers and smaller lawn tools. The mowers, tools, oil and gas will all be recycled.

After buying an electric-powered lawn tool, return a

copy of the store receipt along with the coupon to PPL, and you will be mailed a check. You can purchase your new electric lawn equipment anytime between March 1 and June 23. Remember, however, you can only turn in your old gas-powered equipment on May 6.

About 500 rebate coupons are available, and they will be given out on a first-come, first-serve basis. The offer is limited to one lawn mower and one small lawn tool per household.

Both Black & Decker and TORO will have equipment on display for you to try out, but this equipment will not be for sale. Customers can purchase electric lawn equipment at their favorite store and are not pressured into an immediate buying decision.



Mason-Dixon antique tractors buffs are getting steamed up for a plowing event April 29 at the Brian Biddle farm in southern Adams County. One of the restored workhorses expected to be on hand is the 1921 Eclipse steam engine, owned by Jerry Lucabaugh, Glen Rock.

## Attend Mennonite History Lecture

**HINKLETOWN** (Lancaster Co.) - The public is invited to an illustrated lecture on Swiss, Alsatian, German, and Pennsylvania Mennonite history, scheduled for the evening of May 4, at the Christian Aid Ministries warehouse near Hinkletown.

Beginning with scenes from the birth of Anabaptism in Zurich in the 1520's John L. Ruth of Montgomery County will visually follow the heritage of Mennonites and Amish in Lancaster County from Switzerland through several migrations in Europe and then to Pennsylvania after 1710. Such European areas as the Emmental in Bern, Alsace, the Rhine Valley, and the Kraichgau around Sinshheim, Germany will be visited. The Pennsylvania scenes will be con-

centrated in the area which became present-day Lancaster County.

Presenter Ruth became familiar with Lancaster County during his high school years at the Lancaster Mennonite School, 1944-48. Having been ordained a minister in the Franconia Conference in 1950, he graduated from Eastern Baptist College with a major in English, followed by a doctorate in the same field from Harvard University in 1968. A year of teaching literature at the University of Hamburg introduced his family to the European Mennonite scene. Since 1973 he has served as historical commentator on many European tours on Mennonite history.

Having been asked by Franconia Mennonite leaders in the mid-1970's to work on topics of history and heritage, Ruth has written such books as "Conrad Grebel, Son of Zurich," "'Twas Seeding Time: A Mennonite View of the American Revolution," and "Maintaining the Right Fellowship" (a history of the Franconia and Eastern District Mennonite Conferences). His most recent book, commissioned by the Lancaster Mennonite Historical Society, and entitled "The Earth is the Lord's: A Narrative History of the Lancaster Mennonite Conference," is now in press.

The scenes to be shown on May 4 are drawn from Ruth's 25 years of travel in Europe and Pennsylvania. Special emphasis include geographical features, farming, meetinghouses and family history. Ruth offers the lecture without charge, on behalf of current research bearing on Mennonite immigration to Pennsylvania, supported by various Pennsylvania, Maryland, and Ohio Mennonite and Amish groups. An offering will thus be taken for this purpose (no admission will be charged).

Beginning time for the May 4 meeting is 7:00 p.m. The Christian Aid Ministries warehouse is located at 2412 Division Highway, five miles east of Ephrata, on the north side of Route 322. For more information call (717) 354-4301 or 354-7139.

## Tractor Historians Plowing Into Spring

JOYCE BUPP

York Co. Correspondent

**LITTLESTOWN** (Adams Co.) - antique tractor buffs of southern Pennsylvania and northern Maryland are polishing up their prized plowing pieces for a spring plowing meet.

The Mason-Dixon Historical Society is hosting the plowoff and public educational event beginning at 9 a.m., Saturday, April 29, at the Brian Biddle farm, south of Littlestown.

"With the arrival of spring, we are anxious to play with our machines and smell freshly-turned soil," said antique tractor collector/restorer Herb Wessel of

Hampstead, Maryland.

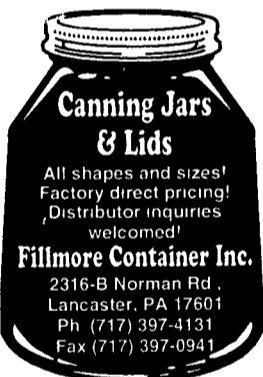
Wessel, who is helping to organize the event, notes that the collecting of antique tractors and farm equipment is one of the fastest growing hobbies in the country.

"In addition to collecting and restoring the old equipment, tractor buffs are interested in educating the public about the way farming was done before no-till and other modern farming methods," Wessel adds. "All antique tractor owners are invited to bring their equipment to participate, and everyone is invited to come and watch."

The Biddle farm is located on Mathias Road, off Route 97, just before crossing the Mason-Dixon line, south of Littlestown. In the event of inclement weather, the plowing demonstration will be held on May 6.

For further information, contact Brian Biddle (717) 359-7483 or Jeff Sterner (410) 848-0443.

*Happy Easter to all*



**Canning Jars & Lids**

All shapes and sizes! Factory direct pricing! Distributor inquiries welcomed!

**Fillmore Container Inc.**

2316-B Norman Rd. Lancaster, PA 17601 Ph (717) 397-4131 Fax (717) 397-0941



### HOT HOUSE

#### Far Infrared Rays (FIR) Health Builder

Within the magnetic spectrum, while some rays, such as light, can be seen by the unaided human eye, most are totally invisible to us. Far Infrared Rays (FIR) are well beyond the ability of the naked eye to see. FIR is capable of penetrating deep into the human body. It can gently and delightfully elevate the body's temperature. When it does so, it helps to expand capillaries which stimulates blood circulation. This increases the body's energy reserve, and accelerates the metabolic exchange between blood and body tissue. That's not all! FIR can actually increase the body tissue's regenerative ability. It also reduces abnormalities in nervous system and helps the autonomous system function properly.

- Electronically Controlled & Safe
- Simple to Operate
- Small and Portable
- A Wider 160 Degree Heating Surface

**100% satisfaction guaranteed!**



HTE USA, INC.

**For More Information**  
**1-800-468-4909**  
**717-354-4929**  
Leave Message

"My research has convinced me that lack of oxygen is the root of most or perhaps even all disease"  
- Dr. Shizuo Inoue



### The Chi Machine

The Sun Harmony Aerobic Exerciser

Does your body get the oxygen it needs?

(Adapted from a quiz by Dr. Eigi Noguchi)

Check all the boxes which apply to you -

- I wake up tired, even after eight hours of sleep
- I sleep restlessly, waking up frequently
- I suffer from chronic fatigue
- I have poor physical endurance
- I tend to be moody and irritable
- I am susceptible to colds and flu
- I suffer from allergies
- I frequently feel tense and on edge
- I am frequently constipated
- I have frequent pain in my shoulder and/or back
- I have weight problems
- I crave sweets, alcohol or soda

If you checked more than three boxes, your body might not be assimilating sufficient oxygen. Please consult your physician. You may wish to have your blood oxygen levels tested - before and after you begin to use the Chi Machine.

## GOOD FOOD OUTLET STORES



See Our Original Line Of Golden Barrel Product Plus All Kinds Of Beans, Candies, Dried Fruit, Snack Mix, Etc. At Reduced Prices

Processors Of Syrups, Molasses, Cooking Oils, Funnel Cake Mix, Pancake & Waffle Mix & Shoofly Pie Mix

If your local store does not have it... SEND FOR FREE BROCHURE

### SPECIALS FOR APRIL

1/2 gal. VEGETABLE OIL	\$2.69
32 oz. CORN SYRUP	\$1.69
1/2 gal. POMACE OLIVE OIL	\$9.59

**GOOD FOOD INC.** W Main St. Box 160 Honey Brook, PA 19344 **610-273-3776** **1-800-327-4406**  
**GOOD FOOD OUTLET** 3614 Old Philadelphia Pike Intercourse, PA 17534 (Just east of Kitchen Kettle Village)  
**L&S SWEETENERS** 388 E. Main St. Leola Pa 17540 **717-656-3486** **1-800-633-2676**



Accepted • We Ship UPS Daily

